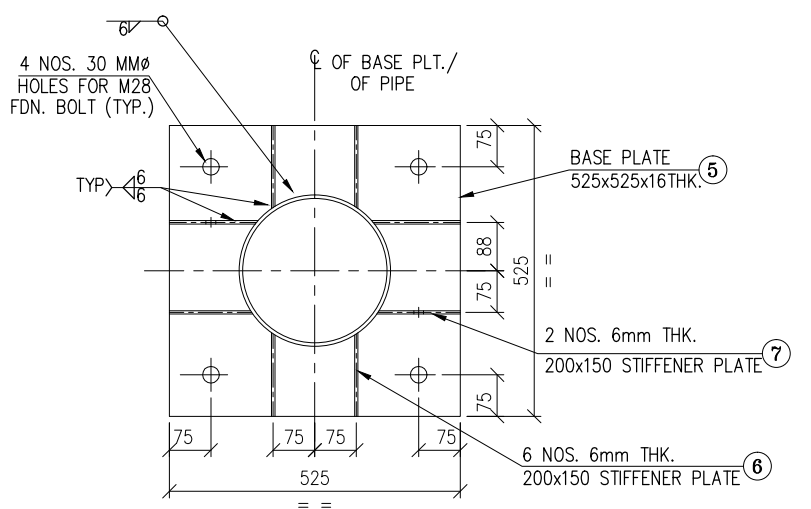
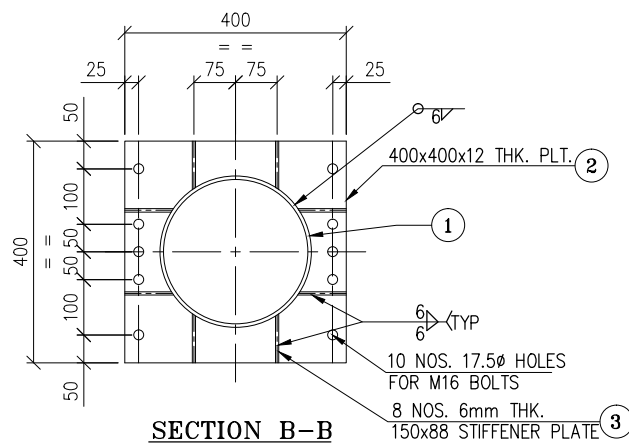


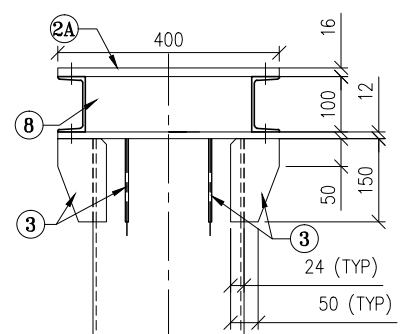
PLAN VIEW AT TOP



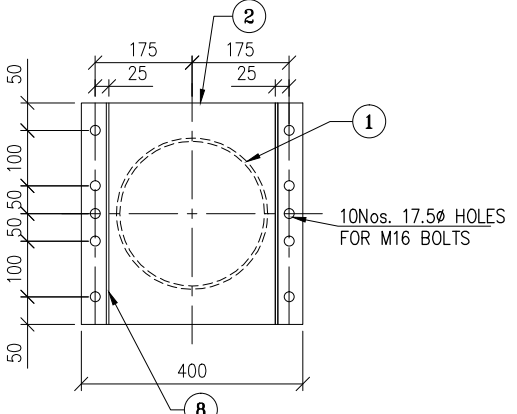
SECTION A-A (BASE PLATE)



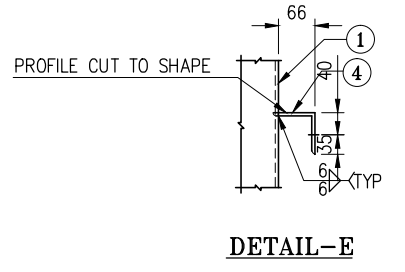
SECTION B-B



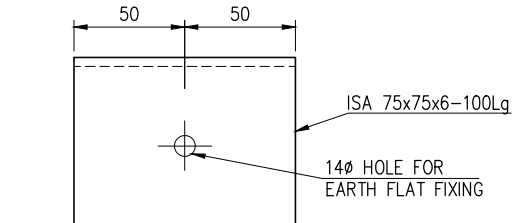
DETAIL-D



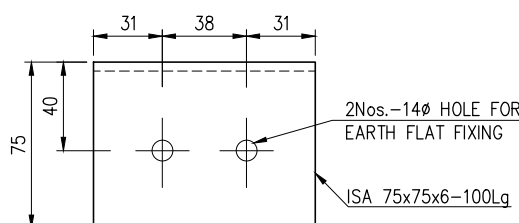
SECTION C-C



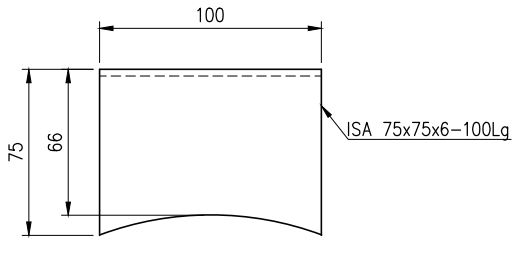
DETAIL-E



DETAIL OF 4 EARTH FLAT FIXING CLEAT IN ELEVATION (ENLARGED)



DETAIL OF 4A EARTH FLAT FIXING CLEAT IN ELEVATION (ENLARGED)



EARTH FLAT FIXING DETAIL IN PLAN (ENLARGED)

BUS HEIGHT FROM PL	8070
EQUIPMENT HEIGHT UP TO C.L. OF BUS	2415(2300+115)
HENCE, SUPPORTING STRUCTURE HEIGHT	5655
EQUIPMENT MAKE	MODERN INSULATORS LIMITED.
EQUIPMENT DRG No.	211-C-C268 R5

**BILL OF QUANTITY:-**

Piece mark	Size/description	Quantity (nos.)	Length mm	Unit wt. kg/m or kg/m <sup>2</sup>	Weight per piece kg	Total Weight kg
1	250 NB PIPE	1	5511	38.9	214.38	214.38
2	12 thk. Plate	1	400 x 400	94.2	15.07	15.07
2A	16 thk. Plate	1	400 x 400	125.6	20.10	20.10
3	6 thk. Plate	8	88 x 150	47.1	0.62	4.98
4	L 75x75x6	6	100	6.8	0.68	4.08
4A	L 75x75x6	2	100	6.8	0.68	1.36
5	16 thk. Plate	1	525 x 525	125.6	34.62	34.62
6	6 thk. Plate	6	150 x 200	47.1	1.41	8.48
7	6 thk. Plate	2	150 x 200	47.1	1.41	2.83
8	ISM 100X50	2	400	9.56	3.82	7.648
					<b>Sub total</b>	<b>313.53</b>

**HARDWARES:-**

Hardware name	Unit wt. (kg)	Quantity (nos.)	Total wt. (kg)
M12 dia x 40 LG (for earth flat fixing)	0.066	10 + 1	0.726
M16 dia x 45 LG	0.133	24 + 3	3.591
M12 dia x 2.5thk sp.washer	0.006	10 + 1	0.066
M16 dia x 3.5 thk sp. washer	0.009	24 + 3	0.241
<b>Total</b>			<b>4.624</b>

**FOUNDATION BOLT DETAILS:-**

Hardware name - M28X925MM LG	Unit wt.(kg)	Quantity (nos.)	Total wt. (kg)
M.S Round bolt	4.480	1	4.480
Standard nut	0.098	2	0.196
Lock nut	0.095	1	0.095
Washer	0.230	1	0.230
Anchor plate	0.30	1	0.300
<b>Total weight (1 NO)</b>			<b>5.30</b>
<b>Total weight (4 NOS)</b>			<b>21.20</b>

**Summary of weights:-**

Weight of Structure:	313.53 kg
Weight of Hardware:	4.62 kg
Weight of Foundation bolts:	21.20 kg
<b>Total Weight:</b>	<b>339.36 kg</b>

**NOTES:-**

- ALL DIMENSIONS ARE IN MILLIMETERS UNLESS OTHERWISE SPECIFIED.
- THE STRUCTURAL PIPE SHALL CONFORM TO IS: 1161-1998 (YST = 210N/mm<sup>2</sup>)
- ALL WELDS ARE 6MM FILLET CONTINUOUS WELD UNLESS OTHERWISE SPECIFIED.
- WELDING SHALL BE DONE AS PER IS : 816 (LATEST REVISION) OR ELECTRIC WELD.
- ALL FABRICATION MATERIALS INCLUDING BOLTS, NUTS AND WASHERS SHALL BE GALVANISED AS PER SPECIFICATION. MIN. COATING THICKNESS SHALL BE 610 g/m<sup>2</sup> FOR PIPE STRUCTURES AND 300 g/m<sup>2</sup> FOR FASTENERS SPRING WASHER SHALL BE ELECTRO GALVANISED AS PER IS:1573-1986 SERVICE GRADE 2.
- ALL BOLTS NUTS AND LOCK NUTS SHALL CONFORM TO REQUIREMENTS OF INDIAN STANDARD SPECIFICATION IS : 1363/1367 (LATEST REVISION)
- ALL BOLT HOLES ARE 17.5mm FOR M16 BOLTS UNLESS NOTED OTHERWISE.

THE FABRICATION DRAWING IS ONLY TYPICAL & THE HEIGHT/MOUNTING & OTHER DETAILS SHALL BE MATCHED AS PER REQUIREMENT OF EQUIPMENT.

<b>BIHAR STATE POWER TRANSMISSION CO. LTD.</b>	
DRG. TITLE	GA OF STRUCTURE FOR 220KV EQUIPMENT-BPI (HL)
DRG. NO.	BSPTCL-SUBS-SWYD-S-STD-DRG-220KV EQUIPMENT-BPI (HL)
SCALE	AS MENTIONED
SHEET	1 OF 2