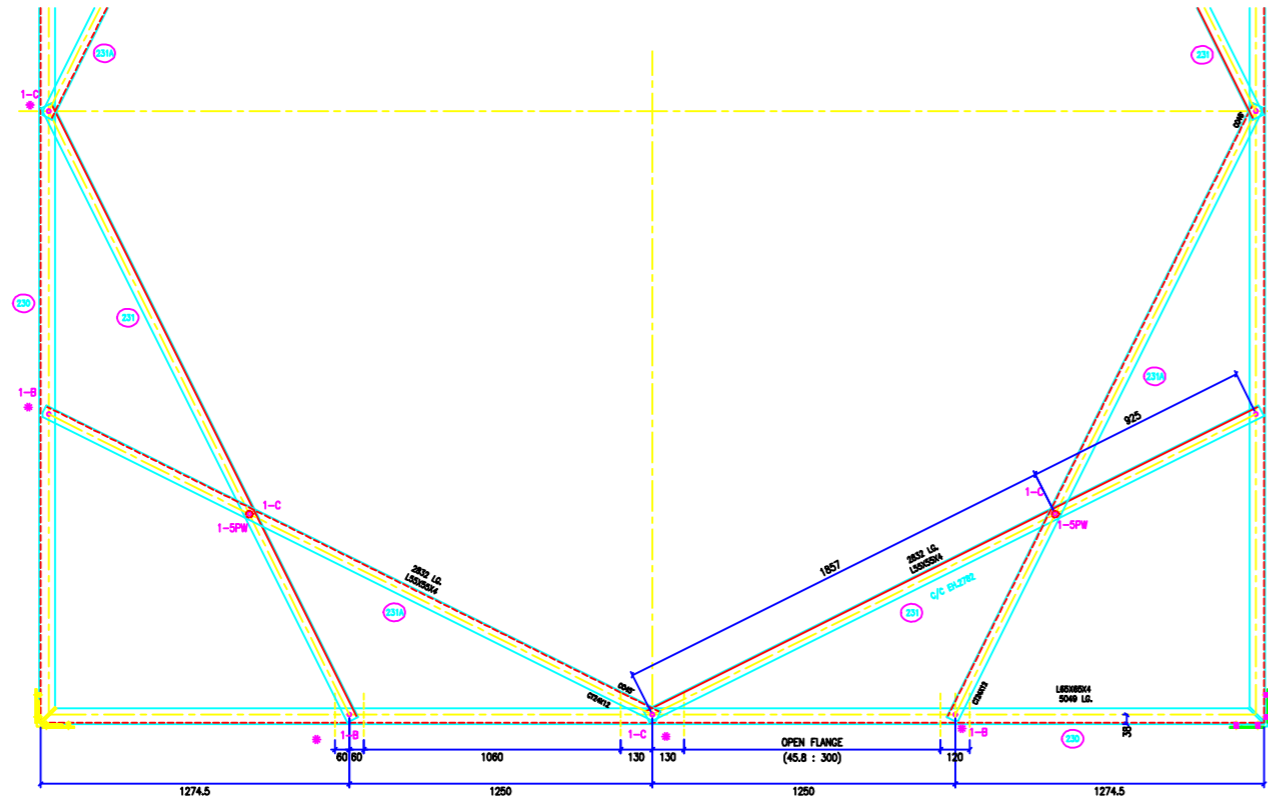


VERTICAL SLOPE  
 TAMB = 0.152239  
 ZTAMB = 0.304478  
 FACE = 1.011932  
 DEVELOP = 1.022914  
 HUBSACK SLOPE  
 TAMB = 0.152955  
 ZTAMB = 1.011263

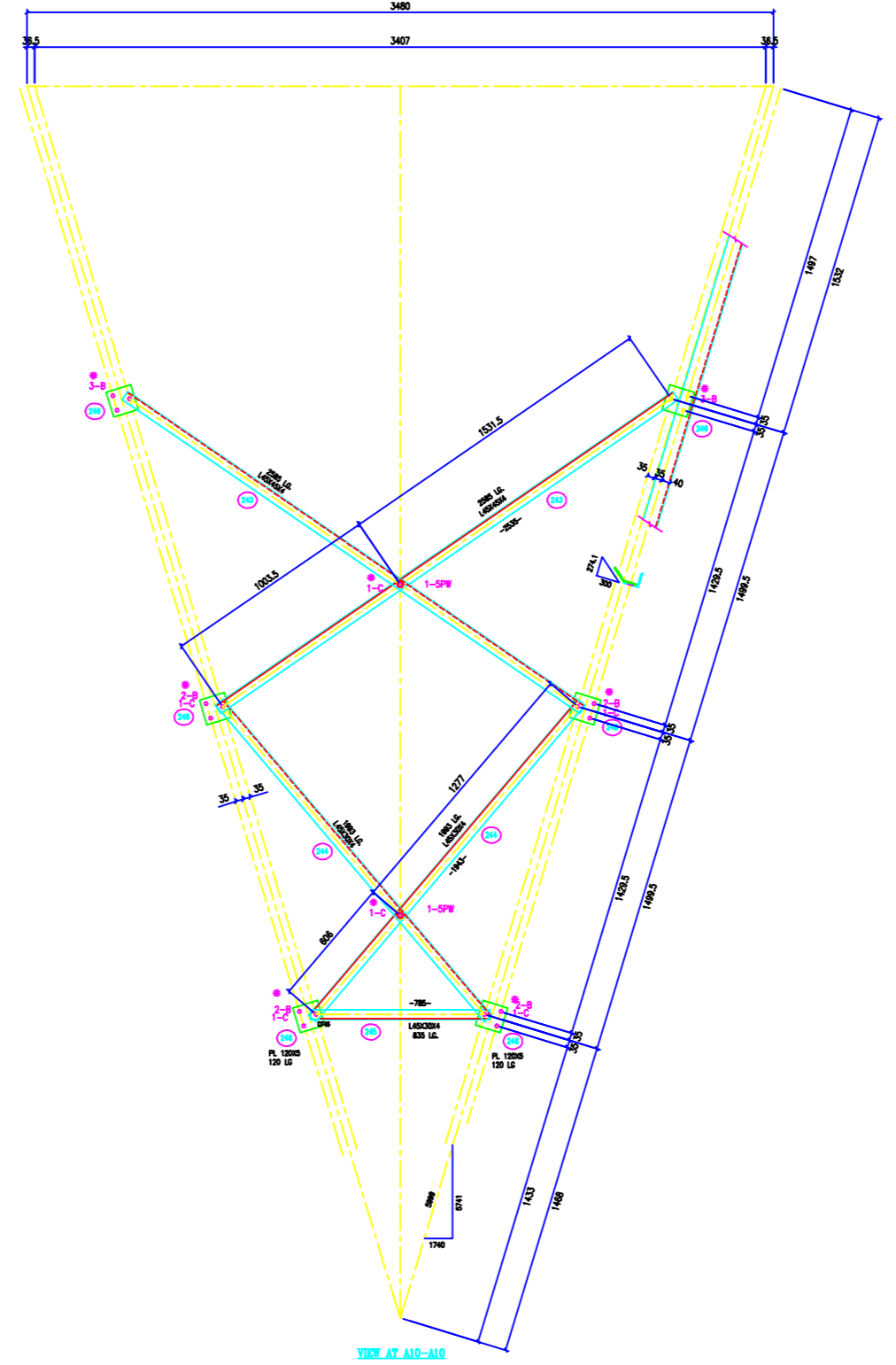
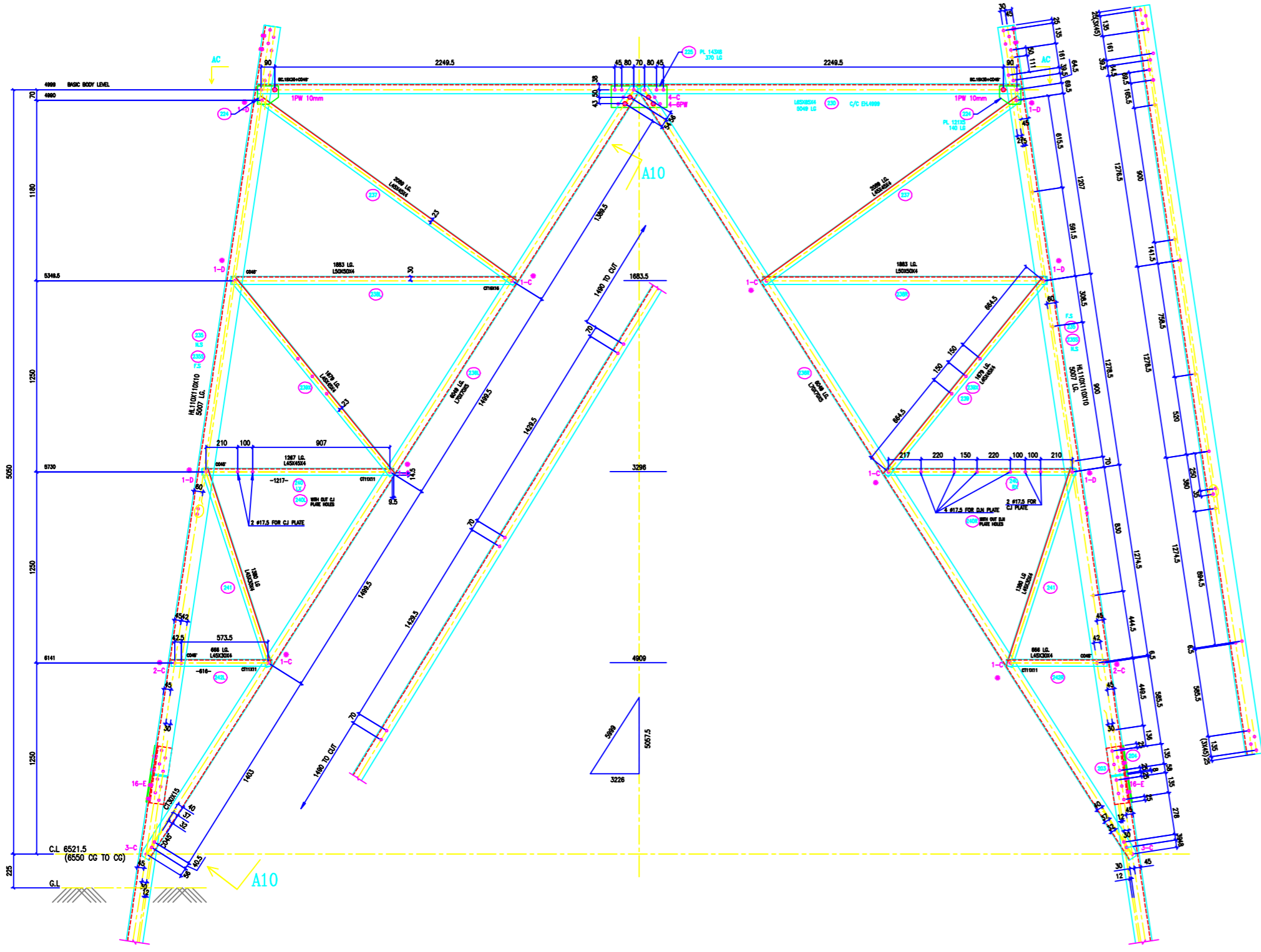
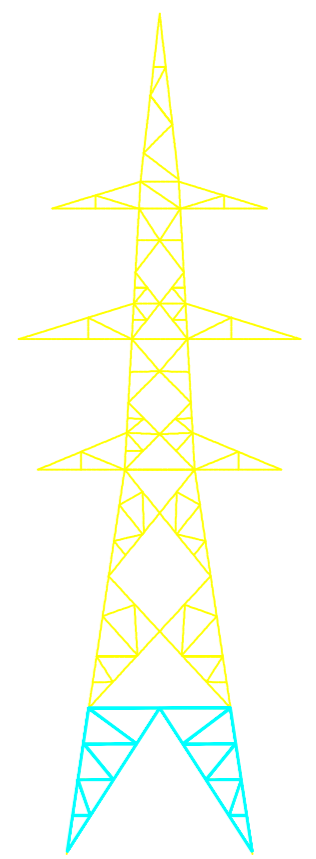
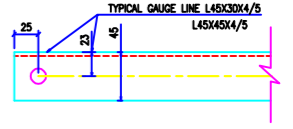


+0M BODY EXTN  
 BOLTS AND NUTS STATEMENT

BOLT SIZE	QNTY	HEX	ATB
# 16X35	50	0	50
# 16X40	104	40	64
# 16X45	24	0	24
# 16X50	64	64	0
SPRING WASHERS	248	104	144
STEP BOLTS	14		14
5 mm PACK WASHER	24		24
8 mm PACK WASHER	0		0

+0M BODY EXTN(PLAN A-A)  
 BOLTS AND NUTS STATEMENT

BOLT SIZE	QNTY	HEX	ATB
# 16X35	8	0	8
# 16X40	8	0	8
SPRING WASHERS	16	0	16



BOLTS AND NUTS STATEMENT

TYPE	SIZE (IN MM)	QUANTITY		
		±0 BASE	±0 L/E	PLAN
B	# 16X35	56	14	8
C	# 16X40	104	26	8
D	# 16X45	24	6	-
E	# 16X50	64	16	-
F	# 16X55	-	-	-
G	# 16X60	-	-	-
H	# 16X65	-	-	-
J	# 16X70	-	-	-
K	# 16X75	-	-	-
L	# 16X80	-	-	-
SPRING WASHERS		248	62	-
30 O.D. PACKING WASHERS # 17.5 MM		-	-	-
	5 mm	24	8	-
	6 mm	-	-	-
	8 mm	-	-	-
	10 mm	-	-	-
STEP BOLTS #16 mm X 175mm		14	4	-

- GENERAL NOTES:
1. ALL DIMENSIONS ARE IN MM UNLESS OTHERWISE SPECIFIED.
  2. MILD STEEL BOLT AND NUTS TO IS 8839/12427/5.8 QLYT
  3. ALL MILD STEEL BOLT AND NUTS ARE TO BE HOT DIP GALVANISED AS PER IS 1857 PART-3/8
  4. ALL MILD STEEL SECTIONS SHALL BE OF TESTED QUALITY CONFORMING TO IS 2062 STANDARD
  5. GALVANIZATION OF TOWER MEMBERS AND FLAT WASHERS AS PER IS 2029
  6. # ALL HOLES # 13.5mm FOR #12mm BOLTS
  7. # ALL HOLES # 17.5mm FOR #16mm BOLTS
  8. # ALL HOLES # 21.5mm FOR #20mm BOLTS
  9. # ALL HOLES # 25.5mm FOR #24mm STEP BOLTS
  10. STANDARD SPRING WASHERS ARE TO BE USED UNDER EACH NUT
  11. ALL FABRICATED MEMBERS SHALL HAVE PRTYK
  12. # INDICATES MEMBERS BEING USED AS STEP BOLTS.
  13. STEP BOLTS ARE TO BE PROVIDED ON TWO DIAGONALLY OPP. LEGS

MARK NO: 230 TO 231, 235 TO 246, 203, 204 & 225

BIHAR STATE POWER TRANSMISSION COMPANY LTD

DRAWN BY		DESCRIPTION	132KV D/C TOWER TYPE "DC" ±0 BASE WITH PLAN VIEW 'AC-AC'	SCALE	-
CHECKED BY		DRG NO	132KV-D/C-Struct-±0-Base-Plan-37	SHEET NO	1-1
APPROVED BY				REV.	0