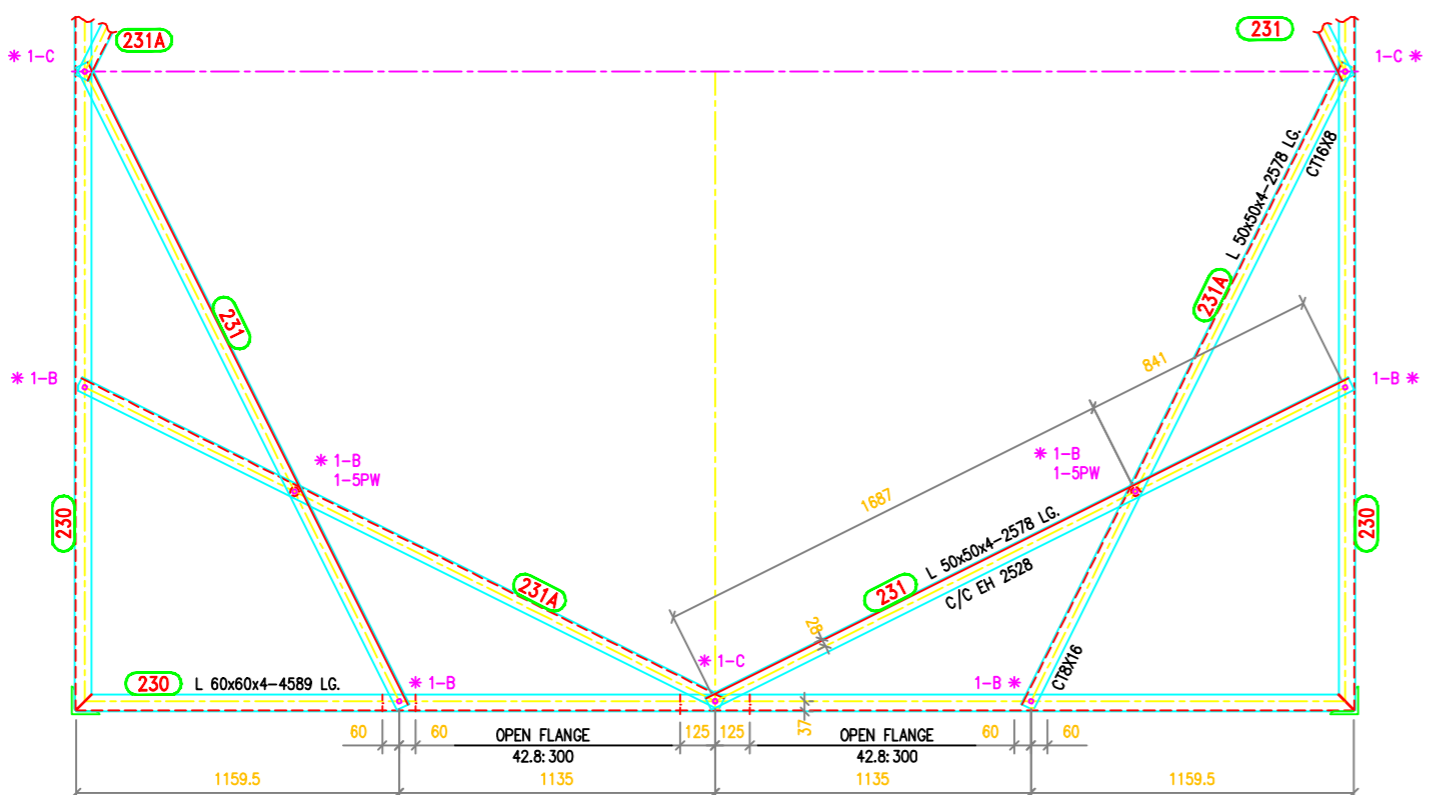


**TOWER SLOPE**  
(FOR ±0M TOWER-DB)

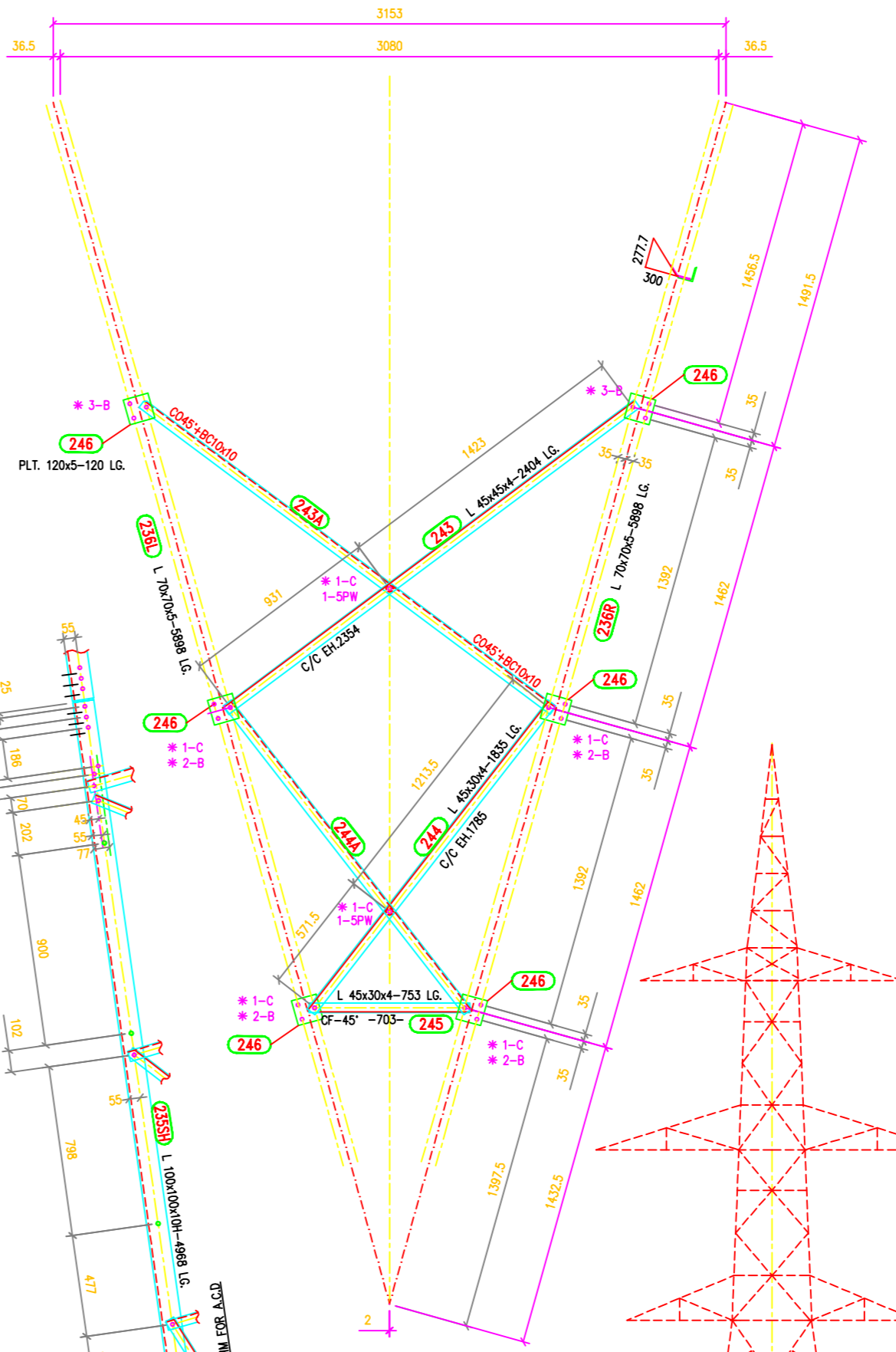
Tan B = 0.142771  
2 Tan B = 0.285542  
Face = 1.010140  
Dev = 1.020180

**In Face Slopes**

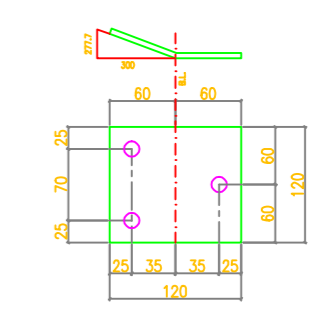
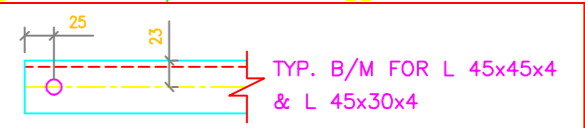
Tan B = 0.141338  
Sec B = 1.009939



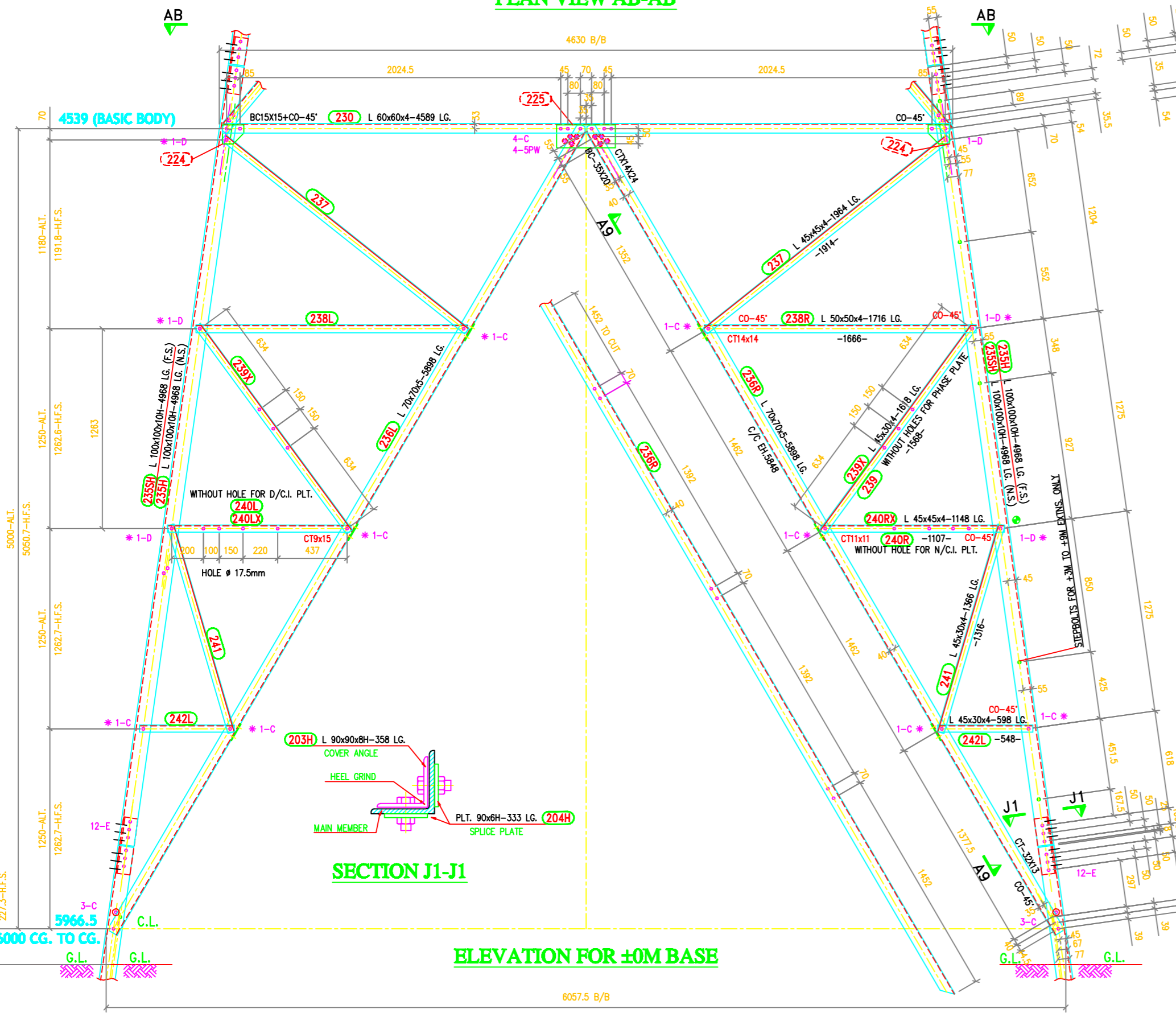
PLAN VIEW AB-AB



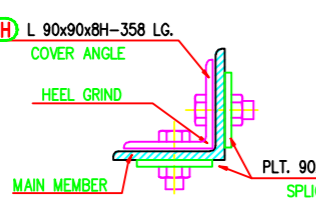
VIEW AT A9-A9



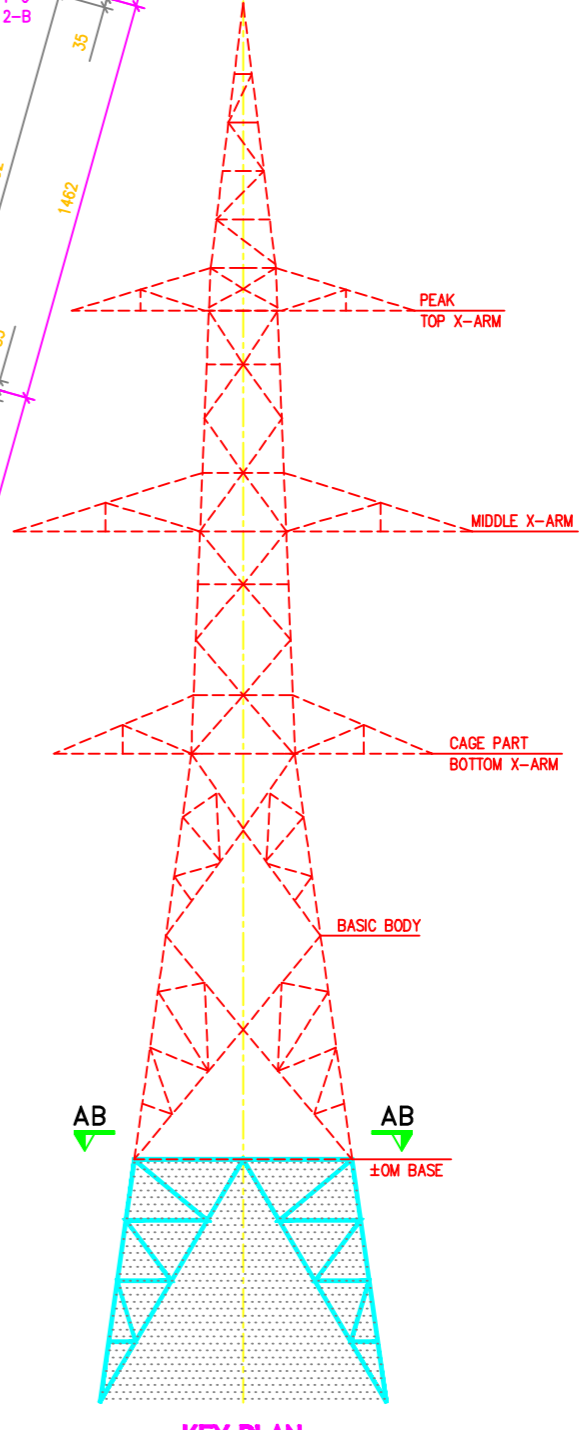
1DB-246 PLT. 120x5 - 120 LG.



ELEVATION FOR ±0M BASE



SECTION J1-J1



KEY PLAN

**BOLTS AND NUTS STATEMENT:**

TYPE	SIZE (IN mm)	QUANTITY		
		±0M BASE	± L.E.	PLAN VIEW
B	#16mm x 35mm	56	14	8
C	#16mm x 40mm	96	24	8
D	#16mm x 45mm	24	6	-
E	#16mm x 50mm	48	12	-
F	#16mm x 55mm	-	-	-
G	#16mm x 60mm	-	-	-
H	#16mm x 65mm	-	-	-
J	#16mm x 70mm	-	-	-
K	#16mm x 75mm	-	-	-
L	#16mm x 80mm	-	-	-
SPRING WASHERS		224	56	16
30 O.D. PACKING WASHERS #17.5mm				
5 mm		24	6	-
6 mm		-	-	-
8 mm		-	-	-
10 mm		-	-	-
STEP BOLTS # 16mm x 175mm		12	3	-

- GENERAL NOTES:**
- ALL DIMENSIONS ARE IN MM UNLESS OTHERWISE STATED.
  - MILD STEEL BOLTS & NUTS TO I.S. 6639/12427/4.6/5.6 QLT.
  - ALL MILD STEEL BOLTS & NUTS ARE TO BE HOT DIP GALVANIZED AS PER I.S. 1367 PART-XIII.
  - ALL MILD STEEL BOLTS & NUTS ARE TO BE QUALITY CONFORMING TO I.S. 2062 STANDARD.
  - GALVANISATION OF TOWER MEMBERS AND FLAT WASHERS AS PER I.S. 2629.
  - ALL HOLES #13.5 FOR M12 BOLTS U.O.S.
  - ALL HOLES #17.5 FOR M16 BOLTS U.O.S.
  - ALL HOLES #21.5 FOR M20 BOLTS U.O.S.
  - ALL HOLES #17.5 FOR M16 STEP BOLTS U.O.S.
  - STANDARD SPRING WASHERS ARE TO BE USED UNDER EACH NUT.
  - ALL FABRICATED MEMBERS SHALL HAVE THE PREFIX...1DB
  - FOR SIZE OF BOLTS AND NUTS SEE TABLE OT-100
  - INDICATES MEMBERS BEING USED AS STEP-BOLTS.
  - FOR ..... SEE DRG. NO. S .....
  - FOR ..... SEE DRG. NO. S .....
  - FOR ..... SEE DRG. NO. S .....
  - FOR ..... SEE DRG. NO. S .....
  - STEP BOLTS ARE TO BE PROVIDED ON TWO DIAGONALLY OPPOSITE LEGS
  - (H) INDICATES HIGH TENSILE STEEL CONFORMING TO IS 8500 Gr-490B QUALITY.
  - FOR ACCEPTANCE CRITERIA REFER MANUFACTURING QUALITY PLAN MFG-701.
  - CONTROL DIMENSIONS ARE SHOWN IN [ ]

MARK Nos. 230-231, 235-246, 203 & 204

BIHAR STATE POWER TRANSMISSION COMPANY LTD

DRAWN BY	DESCRIPTION	132KV D/C TOWER TYPE "DB"		SCALE
CHECKED BY		±0M BASE/LEG EXTN.		-
APPROVED BY	DRG NO	132KV-D/C-Struct-±0-Base-leg-Extn-22	SHEET NO 1-1	REV. 0