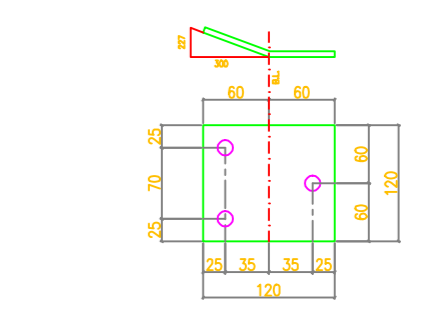
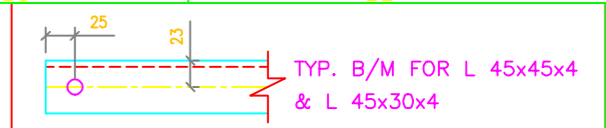


**TOWER SLOPE**  
(FOR ±0M TOWER-DB)

Tan B = 0.142771  
2 Tan B = 0.285542  
Face = 1.010140  
Dev = 1.020180

**In Face Slopes**

Tan B = 0.141338  
Sec B = 1.009939

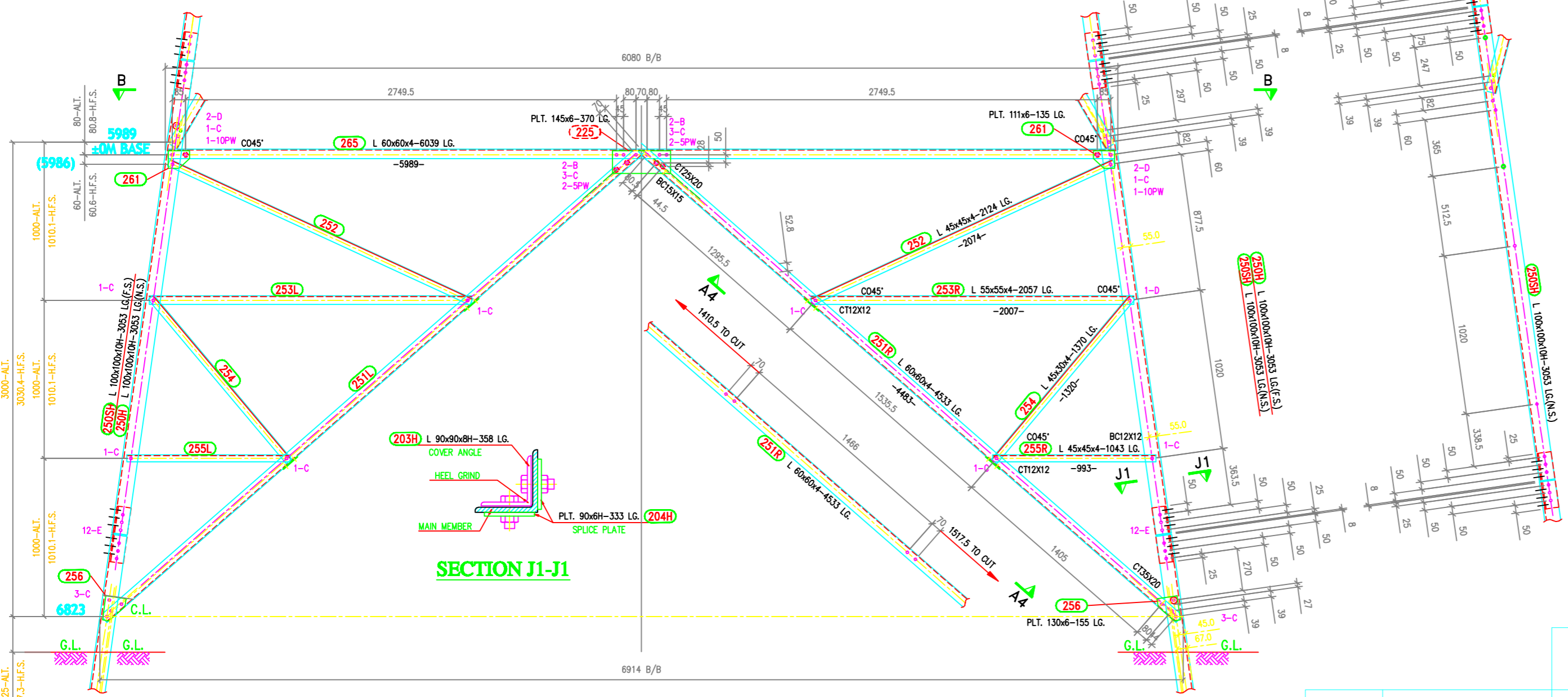
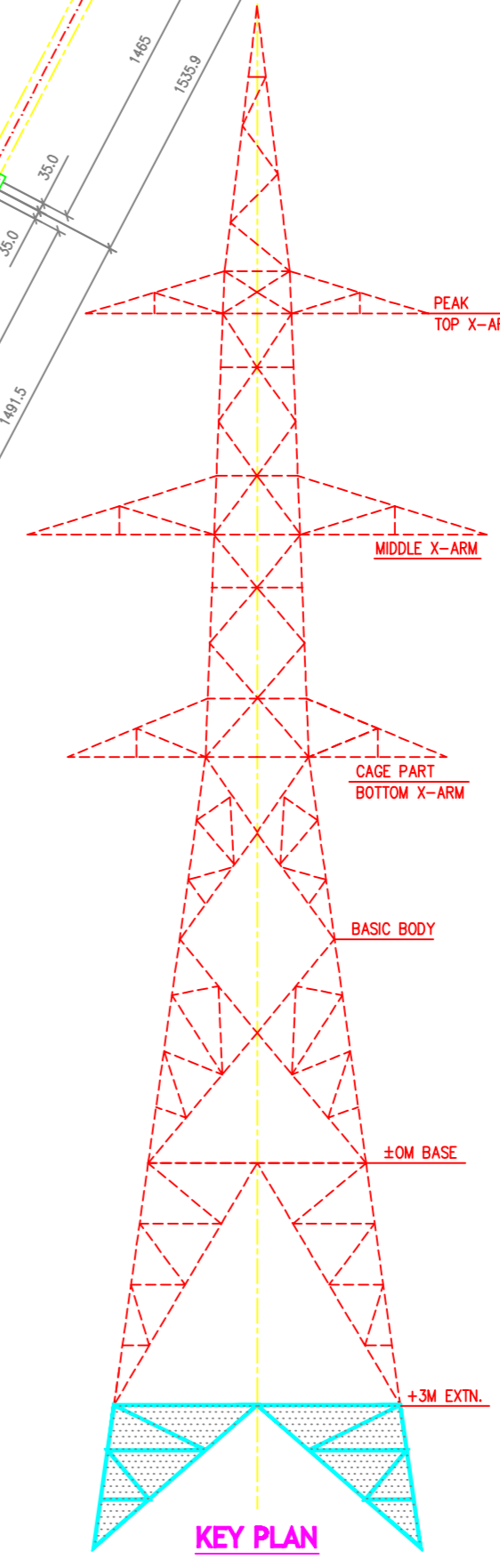
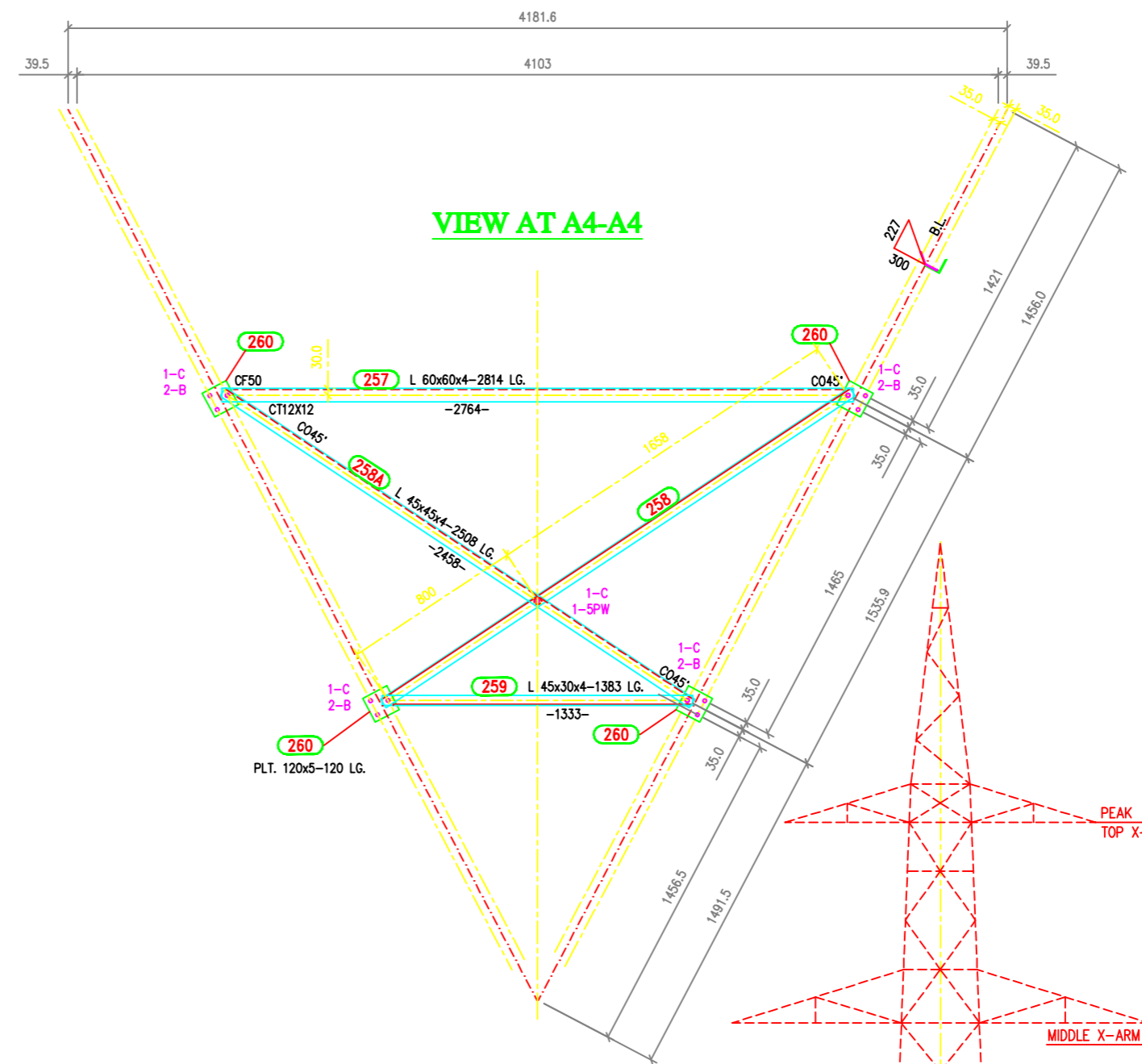
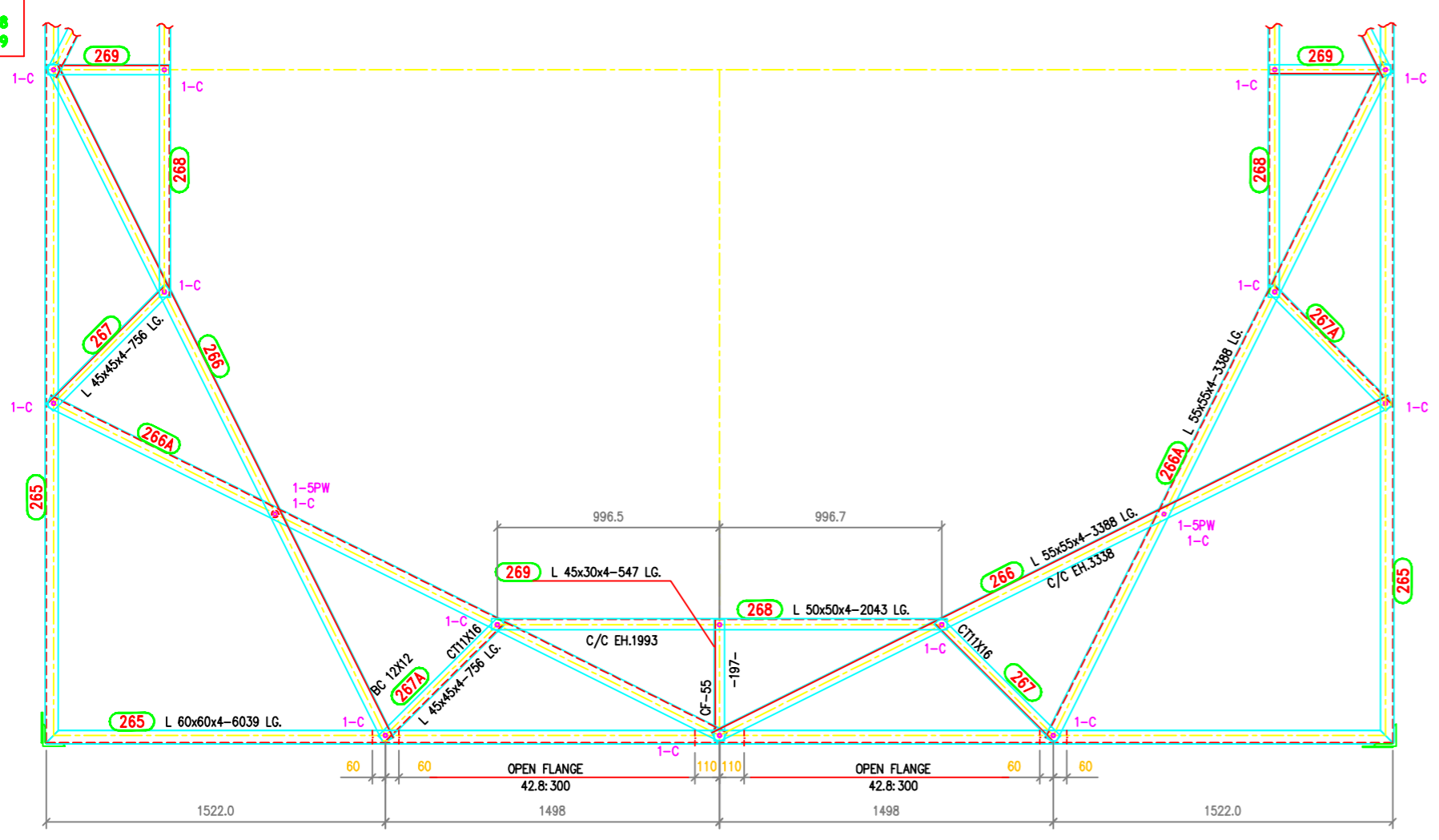


**BOLTS AND NUTS STATEMENT:**

TYPE	SIZE (IN mm)	QUANTITY	
		+3M EXTN.	PLAN B-B
B	Ø16mm x 35mm	12	1
C	Ø16mm x 40mm	19	-
D	Ø16mm x 45mm	14	-
E	Ø16mm x 50mm	16	-
F	Ø16mm x 55mm	-	-
G	Ø16mm x 60mm	-	-
H	Ø16mm x 65mm	-	-
J	Ø16mm x 70mm	-	-
K	Ø16mm x 75mm	-	-
L	Ø16mm x 80mm	-	-
SPRING WASHERS		61	7
30 O.D. PACKING WASHERS Ø17.5mm			
	5 mm	5	1
	6 mm	1	-
	8 mm	-	-
	10 mm	4	-
STEP BOLTS Ø 16mm x 175mm		4	-

- GENERAL NOTES:**
- ALL DIMENSIONS ARE IN MM UNLESS OTHERWISE STATED.
  - MILD STEEL BOLTS & NUTS TO IS 8639/12427/4.6/5.6 O.LTY.
  - ALL MILD STEEL BOLTS & NUTS ARE TO BE HOT DIP GALVANIZED AS PER IS 1367 PART-XIII.
  - ALL MILD STEEL BOLTS & NUTS ARE TO BE QUALITY CONFORMING TO I.S. 2062 STANDARD.
  - GALVANISATION OF TOWER MEMBERS AND FLAT WASHERS AS PER I.S. 2062.
  - ALL HOLES Ø13.5 FOR M12 BOLTS U.O.S.
  - ALL HOLES Ø17.5 FOR M16 BOLTS U.O.S.
  - ALL HOLES Ø21.5 FOR M20 BOLTS U.O.S.
  - ALL HOLES Ø17.5 FOR M16 STEP BOLTS U.O.S.
  - STANDARD SPRING WASHERS ARE TO BE USED UNDER EACH NUT.
  - ALL FABRICATED MEMBERS SHALL HAVE THE PREFIX...10B
  - FOR SIZE OF BOLTS AND NUTS SEE TABLE OT-100
  - INDICATES MEMBERS BEING USED AS STEP-BOLTS.
  - FOR ..... SEE DRG. NO. S .....
  - FOR ..... SEE DRG. NO. S .....
  - FOR ..... SEE DRG. NO. S .....
  - FOR ..... SEE DRG. NO. S .....
  - STEP BOLTS ARE TO BE PROVIDED ON TWO DIAGONALLY OPPOSITE LEGS
  - (H) INDICATES HIGH TENSILE STEEL CONFORMING TO IS 8550 Gr.-490B QUALITY.
  - FOR ACCEPTANCE CRITERIA REFER MANUFACTURING QUALITY PLAN MFG-701.
  - CONTROL DIMENSIONS ARE SHOWN IN [ ]
  - [ ] INDICATES REVISED ITEM NO. & SECTION SIZE

MARK Nos. 250-261, 265-269, 203, 204 & 225.



BIHAR STATE POWER TRANSMISSION COMPANY LTD

DRAWN BY	DESCRIPTION	132KV D/C TOWER TYPE "DB"		SCALE
CHECKED BY		+3M LEG EXTN.WITH PLAN VIEW "B-B"		-
APPROVED BY	DRG NO	132KV-D/C-Struct-+3M-Leg-Extn-28	SHEET NO 1-1	REV. 0