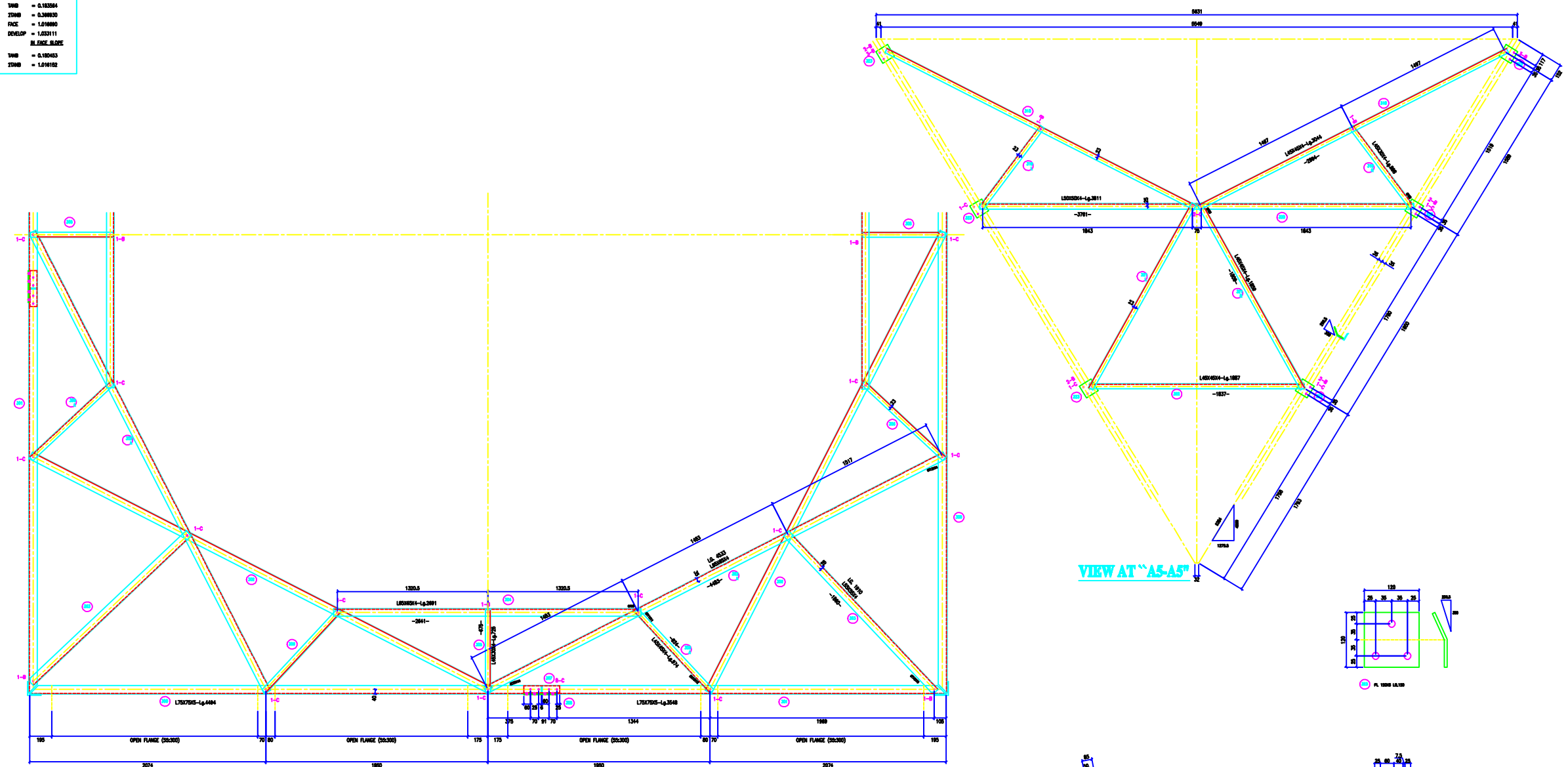
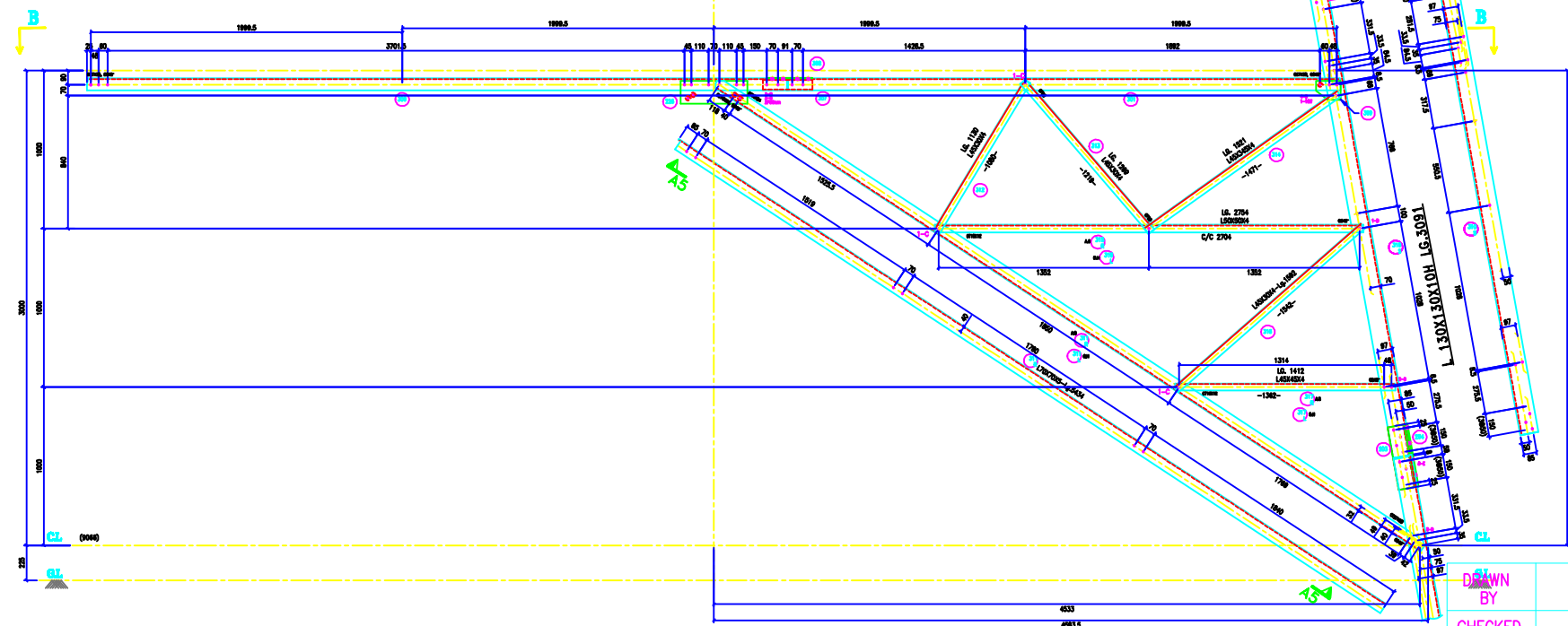


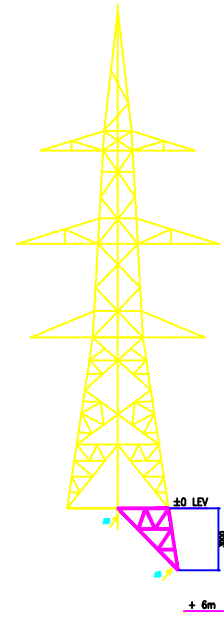
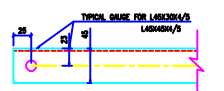
VERTICAL SCALE
 TWD = 0.183264
 ZWD = 0.306930
 FACE = 1.216880
 DEVELOP = 1.252111
BASE SCALE
 TWD = 0.180450
 ZWD = 1.016152



PLAN VIEW ON "B-B"
COMMON PLAN



+3m LEG EXTN.



BOLTS AND NUTS STATEMENT

TYPE	SIZE (N MM)	QUANTITY	
		+3M LEG EXTN	PLAN B-B
B	# 16X35	20	2
C	# 16X40	30	13
D	# 16X45	10	-
E	# 16X50	16	-
F	# 16X55	-	-
G	# 16X60	-	-
H	# 16X65	-	-
J	# 16X70	-	-
K	# 16X75	-	-
L	# 16X80	-	-
SPRING WASHERS		76	15
30 O.D. PACKING WASHERS # 17.5 MM			
5 mm		4	
6 mm		-	
8 mm		-	
10 mm		2	
STEP BOLTS #16 mm X 172mm		3	

- GENERAL NOTES:**
- ALL DIMENSIONS ARE IN MM UNLESS OTHERWISE SPECIFIED.
 - MILD STEEL BOLT AND NUTS TO IS 8038/12427/5.6 QLYT.
 - ALL MILD STEEL BOLT AND NUTS ARE TO BE HOT DIP GALVANIZED AS PER ASTM A553.
 - ALL MILD STEEL SECTIONS SHALL BE OF TESTED QUALITY CONFORMING TO IS 2062 STANDARD.
 - GALVANIZATION OF TOWER MEMBERS AND FLAT WASHERS AS PER IS 2029.
 - ALL HOLES # 13.5mm FOR #12mm BOLTS.
 - ALL HOLES # 17.5mm FOR #16mm BOLTS.
 - ALL HOLES # 21.5mm FOR #20mm BOLTS.
 - ALL HOLES # 17.5mm FOR #16mm STEP BOLTS.
 - SPRING WASHERS ARE TO BE USED UNDER EACH NUT.
 - ALL FABRICATED MEMBERS SHALL HAVE PROTECTOR.
 - INDICATES MEMBERS BEING USED AS STEP BOLTS.
 - STEP BOLTS ARE TO BE PROVIDED ON TWO DIAGONALLY OPP. LEGS.

MARK NO: 250-253, 255-269, 203, 204, 226

BIHAR STATE POWER TRANSMISSION COMPANY LTD

DESCRIPTION	132KV D/C TOWER TYPE "DD" +3 LEG/±0 BASE PLAN VIEW "B-B"	SCALE	-
DRG NO	132KV-D/C-Struct-±3M-leg-±0M -Base-Plan-48	SHEET NO	1-1
		REV.	0

DRAWN BY
 CHECKED BY
 APPROVED BY