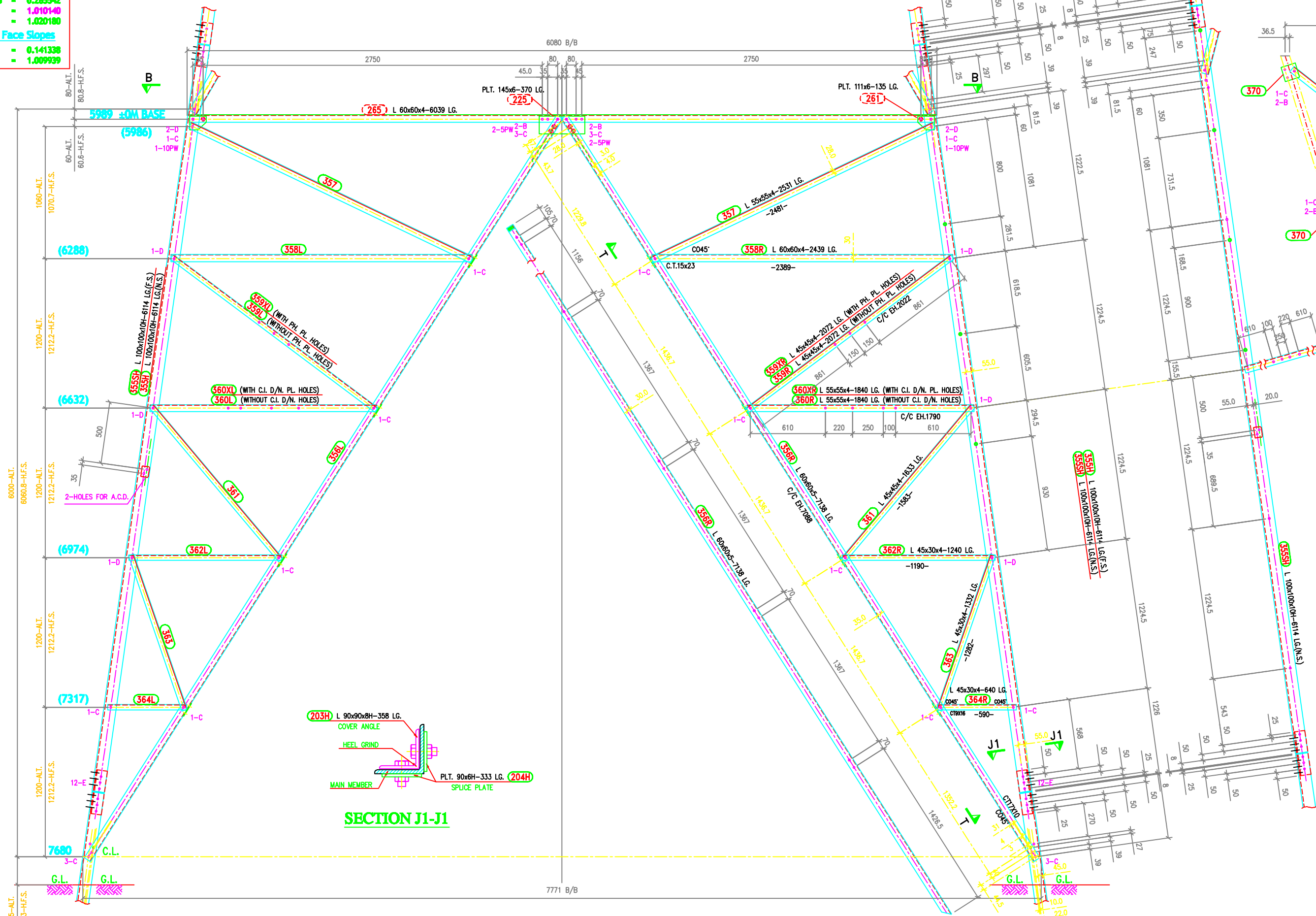
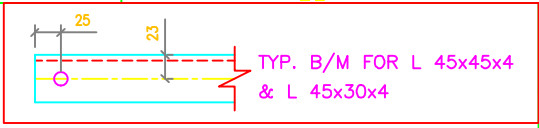
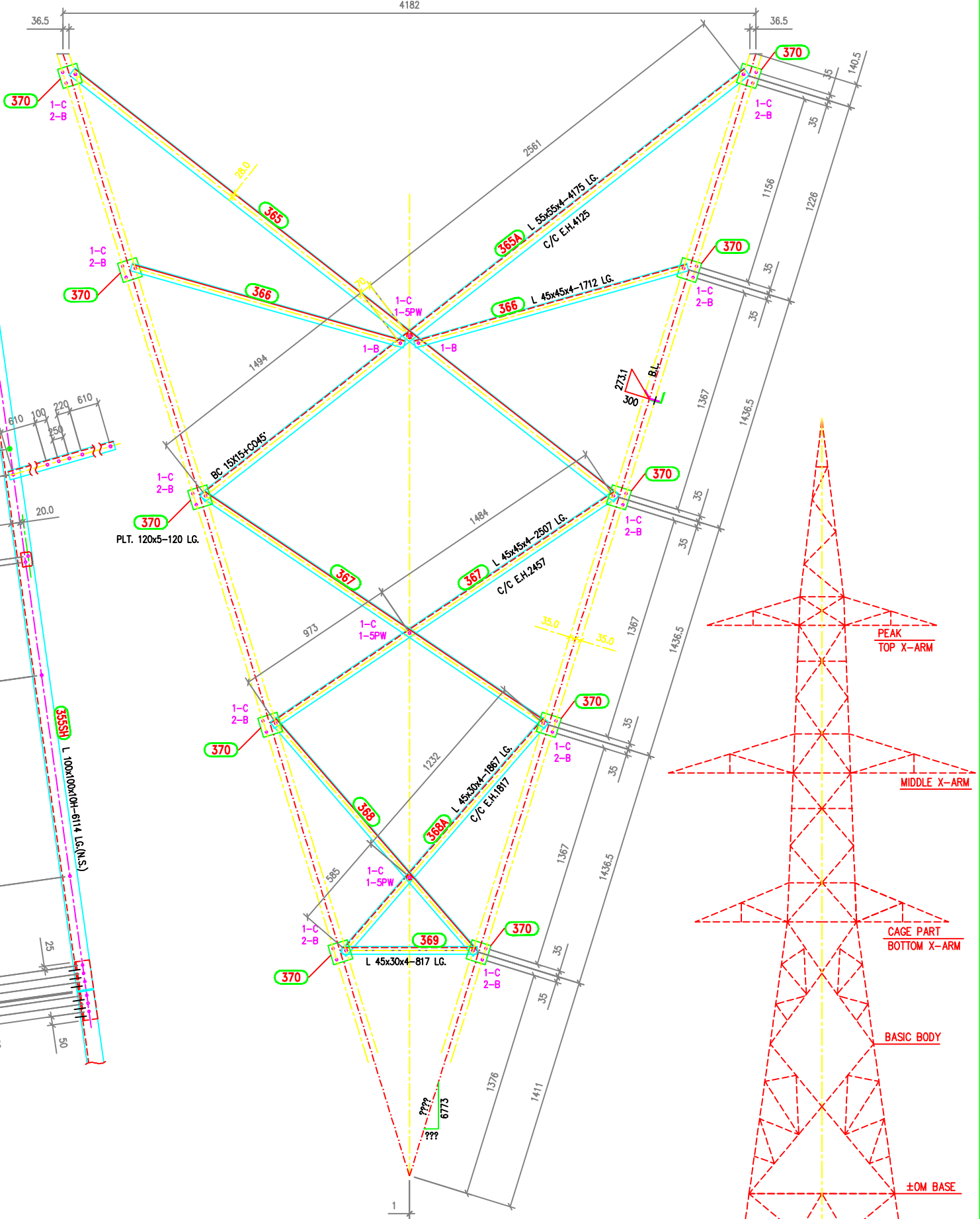


TOWER SLOPE
(FOR ±0M TOWER-DB)
Tan B = 0.142771
2.Tan B = 0.285542
Tana = 1.819148
Tana = 1.020180
In Face Slopes
Tan B = 0.141338
Sec B = 1.009939

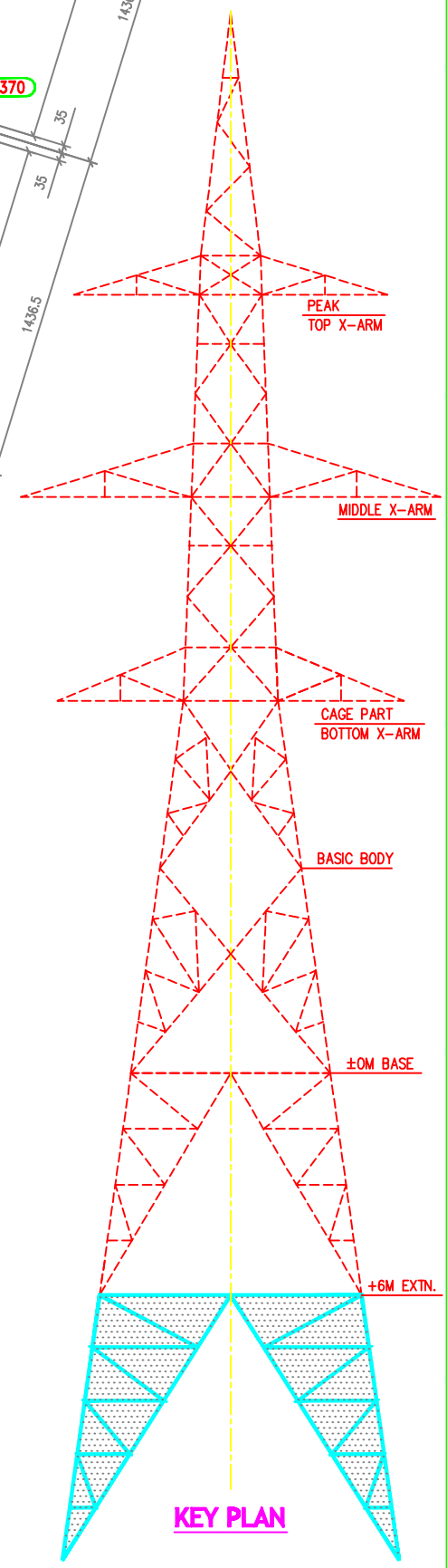


SECTION J1-J1

+6M LEG EXTENSION (ELEVATION)



VIEW AT-T



KEY PLAN

BOLTS AND NUTS STATEMENT:

| TYPE | SIZE (IN mm) | QUANTITY | |
|---------------------------------|--------------|--------------------|---|
| | | +6M EXTN. PLAN B-B | |
| B | Ø16mm x 35mm | 30 | - |
| C | Ø16mm x 40mm | 31 | - |
| D | Ø16mm x 45mm | 12 | - |
| E | Ø16mm x 50mm | 12 | - |
| F | Ø16mm x 55mm | - | - |
| G | Ø16mm x 60mm | - | - |
| H | Ø16mm x 65mm | - | - |
| J | Ø16mm x 70mm | - | - |
| K | Ø16mm x 75mm | - | - |
| L | Ø16mm x 80mm | - | - |
| SPRING WASHERS | | 85 | - |
| 30 O.D. PACKING WASHERS Ø17.5mm | | - | - |
| | 5 mm | 4 | - |
| | 6 mm | 3 | - |
| | 8 mm | - | - |
| | 10 mm | 2 | - |
| STEP BOLTS Ø 16mm x 175mm | | 14 | - |

- GENERAL NOTES:**
- ALL DIMENSIONS ARE IN MM UNLESS OTHERWISE STATED.
 - MILD STEEL BOLTS & NUTS TO I.S. 6639/12427/4,6/5,6 QLT.Y.
 - ALL MILD STEEL BOLTS & NUTS ARE TO BE HOT DIP GALVANIZED AS PER I.S. 1367 PART-XIII.
 - ALL MILD STEEL BOLTS & NUTS ARE TO BE QUALITY CONFORMING TO I.S. 2082 STANDARD.
 - GALVANISATION OF TOWER MEMBERS AND PLAT WASHERS AS PER I.S. 2829.
 - ALL HOLES Ø13.5 FOR M12 BOLTS U.O.S.
 - ALL HOLES Ø17.5 FOR M16 BOLTS U.O.S.
 - ALL HOLES Ø21.5 FOR M20 BOLTS U.O.S.
 - ALL HOLES Ø17.5 FOR M16 STEP BOLTS U.O.S.
 - STANDARD SPRING WASHERS ARE TO BE USED UNDER EACH NUT.
 - ALL FABRICATED MEMBERS SHALL HAVE THE PREFIX... 10B
 - FOR SIZE OF BOLTS AND NUTS SEE TABLE 01-100
 - INDICATES MEMBERS BEING USED AS STEP-BOLTS.
 - FOR SEE DRG. NO. S
 - FOR SEE DRG. NO. S
 - FOR SEE DRG. NO. S
 - FOR SEE DRG. NO. S
 - FOR SEE DRG. NO. S
 - STEP BOLTS ARE TO BE PROVIDED ON TWO DIAGONALLY OPPOSITE LEGS
 - (H) INDICATES HIGH TENSILE STEEL CONFORMING TO IS 8500 Gr.-490B QUALITY.
 - FOR ACCEPTANCE CRITERIA REFER MANUFACTURING QUALITY PLAN MFG-701.
 - CONTROL DIMENSIONS ARE SHOWN IN
 - INDICATES REVISED ITEM NO. & SECTION SIZE

MARK Nos. 355-370, 203, 204, 225, 261, 265-269

DRAWN BY
CHECKED BY
APPROVED BY

| | | | |
|---|--|--------------|------------|
| BIHAR STATE POWER TRANSMISSION COMPANY LTD | | | |
| DESCRIPTION | 132KV D/C TOWER TYPE "DB" +6M LBG EXTN. WITH VIEW "T-T" | | SCALE - |
| DRG NO | 132KV-D/C-Struct-+6M-Leg-Extn-210 | SHEET NO 1-1 | REV. 0 |