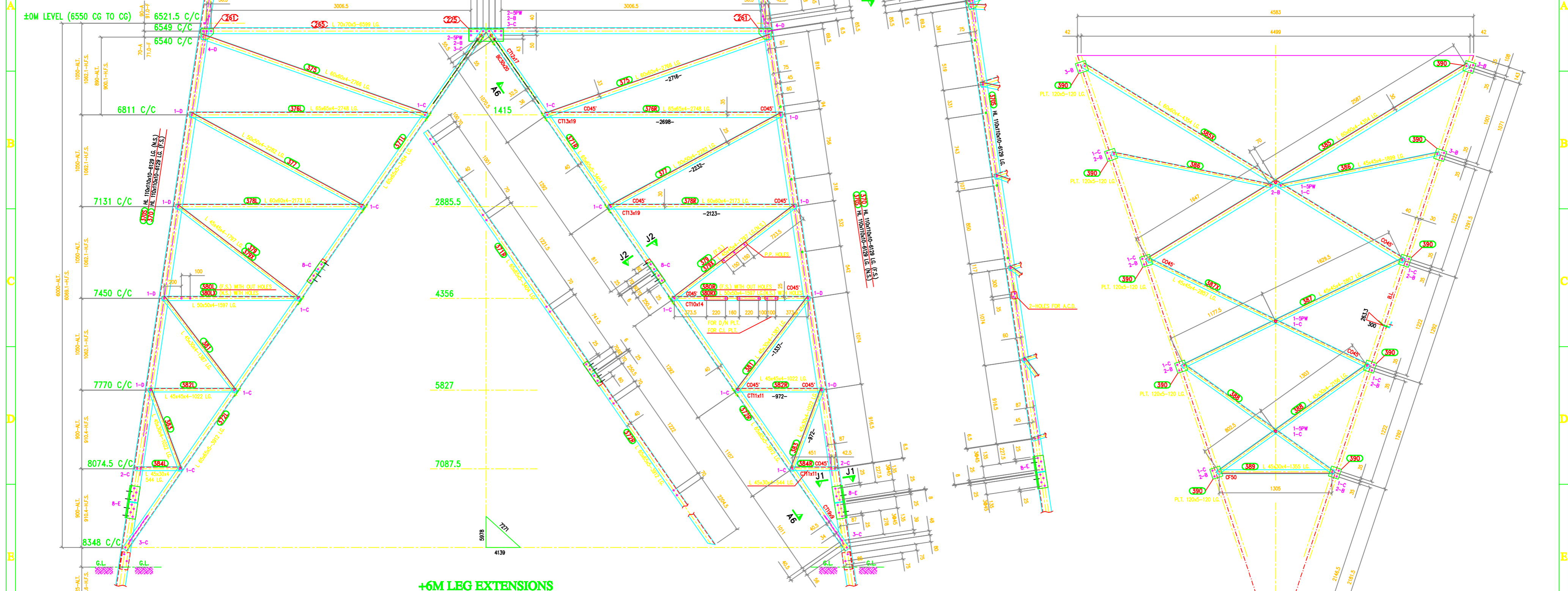
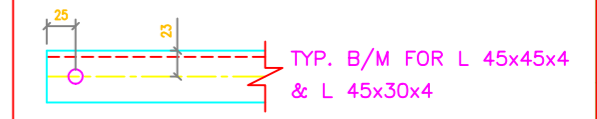
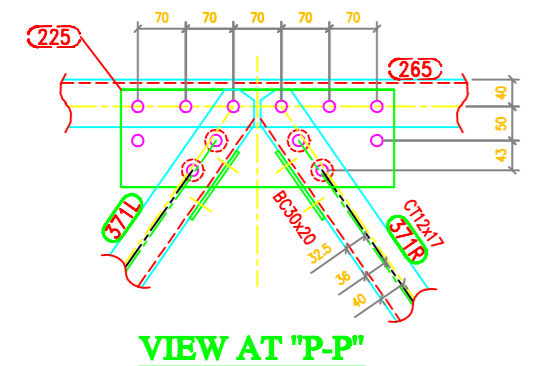


**TOWER SLOPE**  
 Tan B = 0.152239  
 2 Tan B = 0.304478  
 Face = 1.011522  
 Dev = 1.022914

**In Face Slopes**  
 Tan B = 0.150505  
 Sec B = 1.011263



**+6M LEG EXTENSIONS**



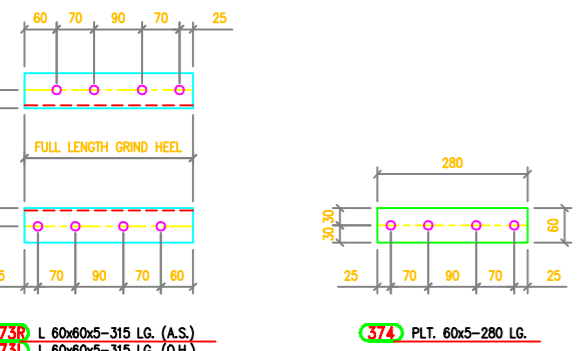
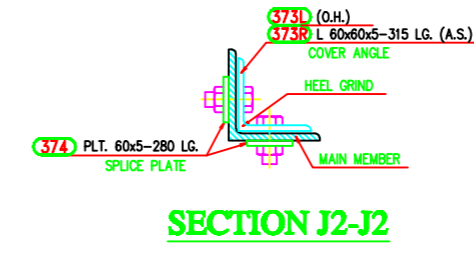
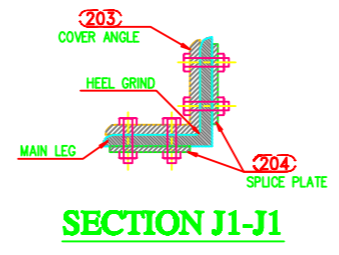
**GENERAL NOTES:**

- ALL DIMENSIONS ARE IN MM UNLESS OTHERWISE STATED.
- MILD STEEL BOLTS & NUTS TO IS 6839/12427/4.6/5.6 Q.LTY.
- ALL MILD STEEL BOLTS & NUTS ARE TO BE HOT DIP GALVANIZED AS PER IS 1367 PART-XIII.
- ALL MILD STEEL BOLTS & NUTS ARE TO BE QUALITY CONFORMING TO IS. 2062 STANDARD.
- GALVANISATION OF TOWER MEMBERS AND FLAT WASHERS AS PER IS. 2629.
- ALL HOLES #13.5 FOR M12 BOLTS U.O.S.
- ALL HOLES #17.5 FOR M16 BOLTS U.O.S.
- ALL HOLES #21.5 FOR M20 BOLTS U.O.S.
- ALL HOLES #17.5 FOR M16 STEP BOLTS U.O.S.
- STANDARD SPRING WASHERS ARE TO BE USED UNDER EACH NUT.
- ALL FABRICATED MEMBERS SHALL HAVE THE PREFIX...1DC
- FOR SIZE OF BOLTS AND NUTS SEE TABLE OT-100
- INDICATES MEMBERS BEING USED AS STEP-BOLTS.
- FOR ..... SEE DRG. NO. S .....
- FOR ..... SEE DRG. NO. S .....
- FOR ..... SEE DRG. NO. S .....
- STEP BOLTS ARE TO BE PROVIDED ON TWO DIAGONALLY OPPOSITE LEGS
- (H) INDICATES HIGH TENSILE STEEL CONFORMING TO IS 8500 Gr.-490B QUALITY.
- FOR ACCEPTANCE CRITERIA REFER MANUFACTURING QUALITY PLAN MFD-701.
- CONTROL DIMENSIONS ARE SHOWN IN .....
- INDICATES REVISED ITEM No. & SECTION SIZE

MARK Nos. 370-390, 203, 204, 225, 261 & 265

**BOLTS AND NUTS STATEMENT:**

TYPE	SIZE (IN mm)	QUANTITY	
		+6M EXTN.	PLAN B-B
B	Ø16mm x 35mm	30	1
C	Ø16mm x 40mm	51	5
D	Ø16mm x 45mm	16	1
E	Ø16mm x 50mm	16	-
F	Ø16mm x 55mm	-	-
G	Ø16mm x 60mm	-	-
H	Ø16mm x 65mm	-	-
J	Ø16mm x 70mm	-	-
K	Ø16mm x 75mm	-	-
L	Ø16mm x 80mm	-	-
SPRING WASHERS		113	7
30 O.D. PACKING WASHERS #17.5mm		-	-
	5 mm	7	1
	6 mm	-	-
	8 mm	-	-
	10 mm	2	-
STEP BOLTS Ø 16mm x 175mm		16	-



**VIEW AT "A6-A6"**

**BIHAR STATE POWER TRANSMISSION COMPANY LTD**

DRAWN BY	DESCRIPTION	132KV D/C TOWER TYPE "DC" MKD."R" TOWER(+6.0M LEG EXTN.)	SCALE	
CHECKED BY			-	
APPROVED BY			DRG NO	132KV-D/C-Struct-+6M-Leg-Extn-310