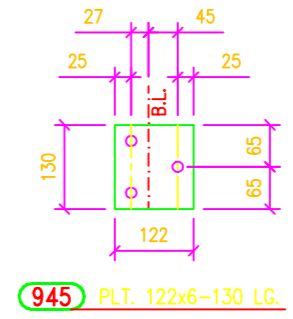
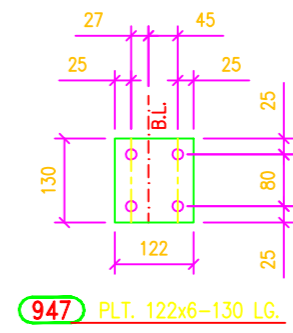
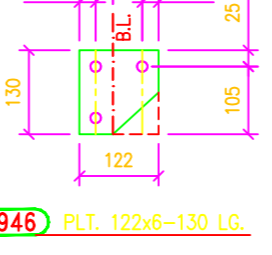
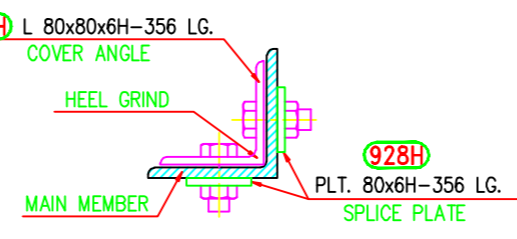
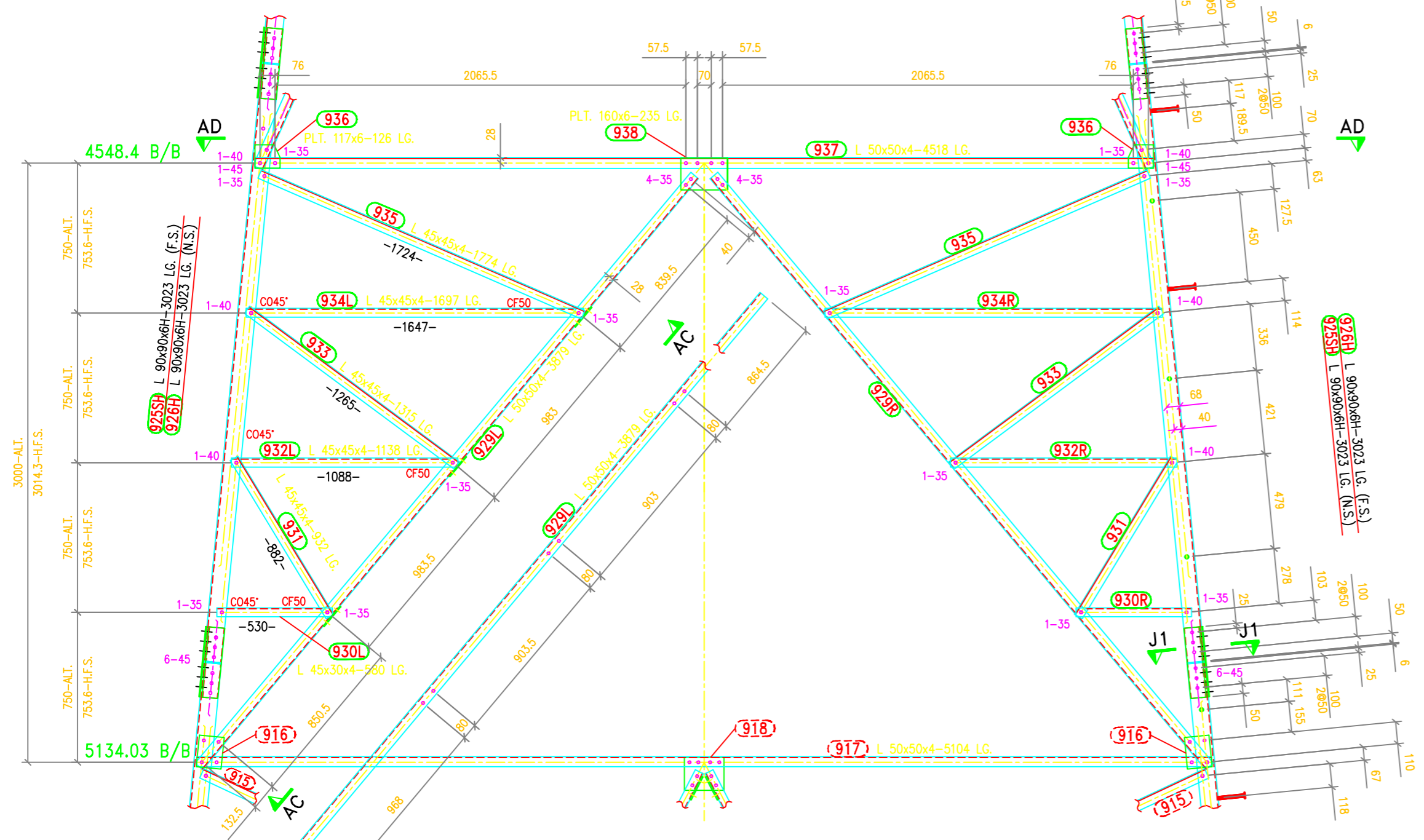
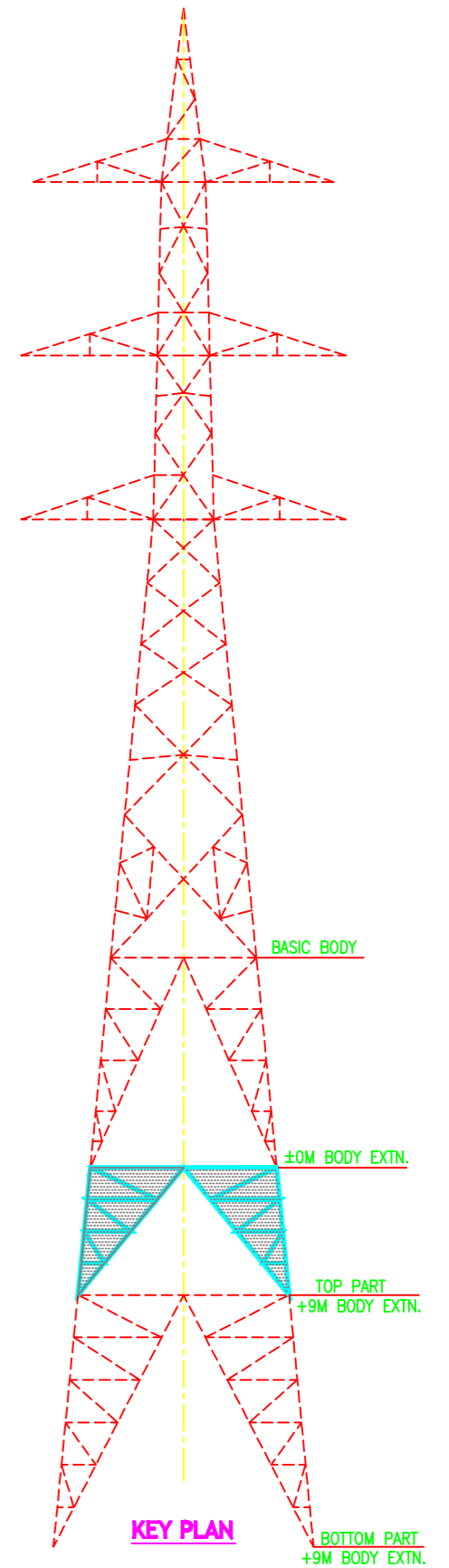
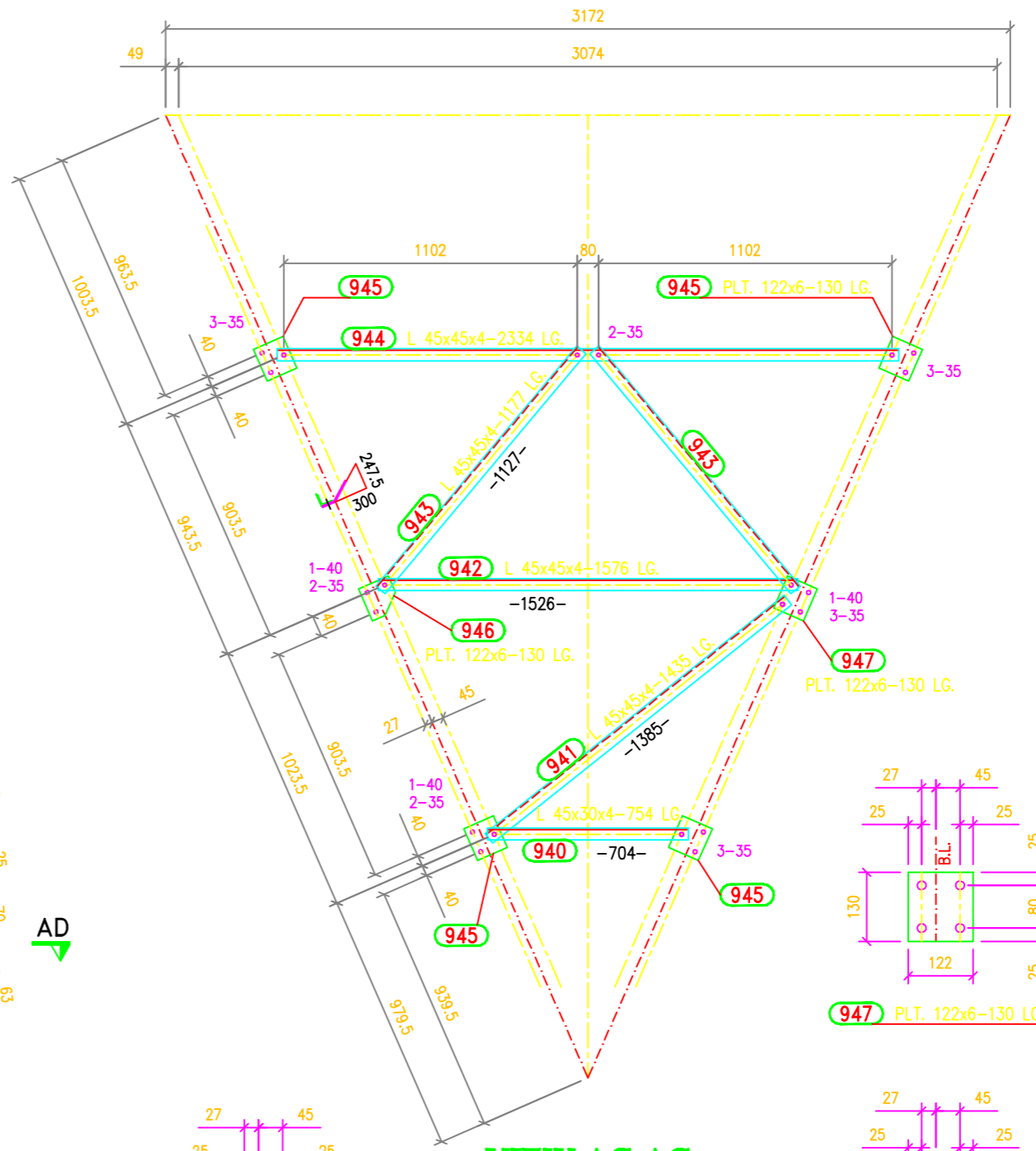
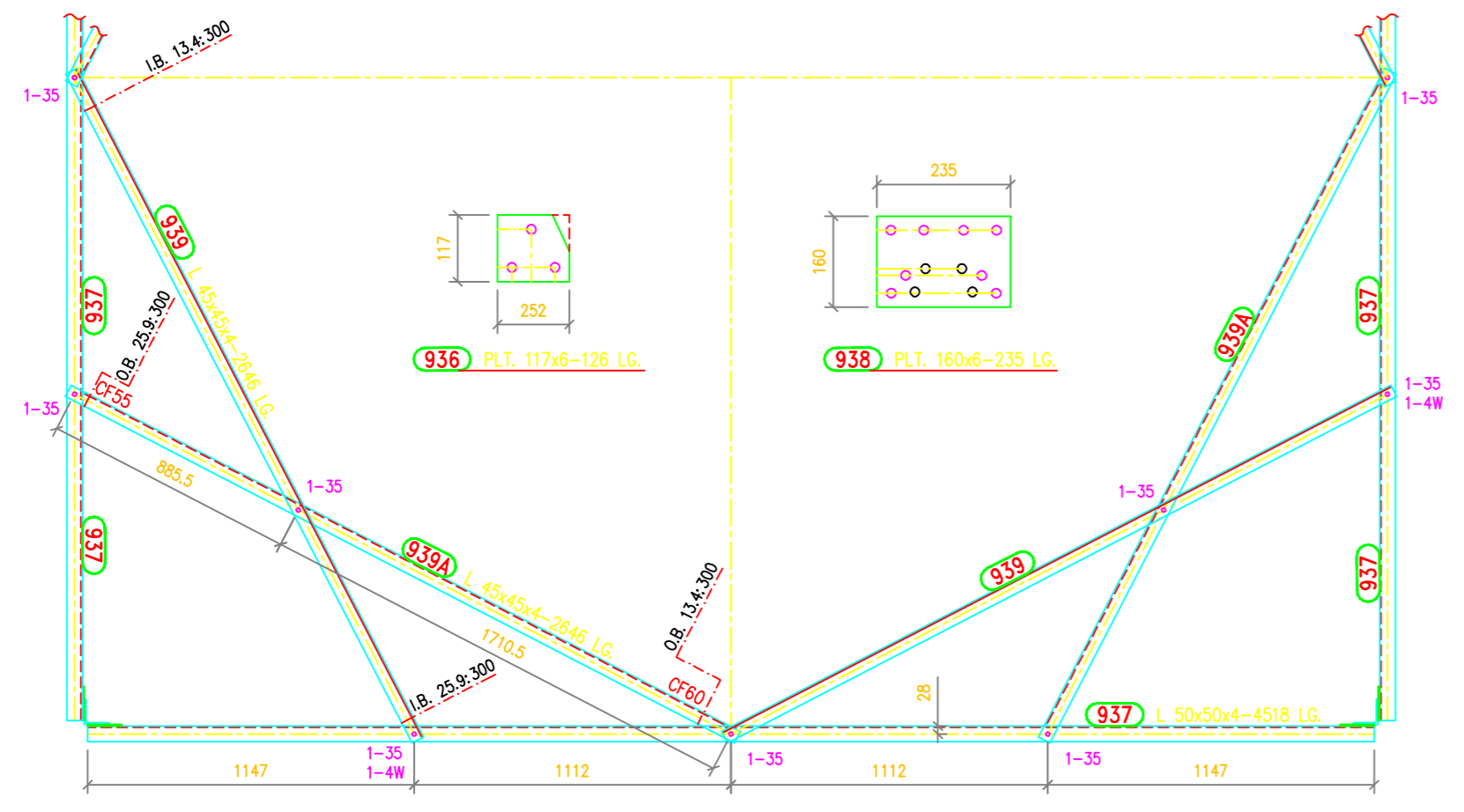
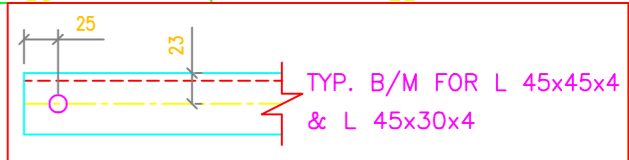


TOWER SLOPE
(FOR ±0M TOWER)

Tan B = 0.09760541
2 Tan B = 0.19521083
Face = 1.00475212
Dev = 1.00948186

In Face Slopes

Tan B = 0.09714377
Sec B = 1.00396212



SUMMARY OF BOLTS FOR +9M BODY EXTENSION (TOP PART)

BOLT SIZE	QUANTITY	GRADE	REMARKS
16φ x 35 LG	168	5.6	-
16φ x 40 LG	36	5.6	-
16φ x 45 LG	56	5.6	-
16φ x 50 LG	-	5.6	-
16φ x 3.5 THK	260	-	SPRING WASHERS
4THK. WASHER	4	-	PACK WASHERS
6THK. WASHER	-	-	PACK WASHERS
16φx175 LG.	10	5.6	STEP BOLT WITH 2 NUTS & 1 SPRING WASHER

- GENERAL NOTES :**
- ALL DIMENSIONS ARE IN "mm" UNLESS OTHERWISE SPECIFIED.
 - INDICATES Ø17.5 HOLE FOR M16 BOLT U.O.S.
 - ALL ERECTION MARKS ARE TO BE PREFIXED WITH - "1DA"
 - STRUCTURAL STEEL SHALL BE AS FOLLOWS
 - (i) MILD STEEL - IS:2062 WITH YIELD STRESS $F_y=2550$ KG/SQ.CM.
 - (ii) HIGH TENSILE STEEL - IS:8500 GR490B
 - BOLTS AND NUTS AS PER IS:12427 - 1988. CONFIRMING TO GRADE-5.6
 - GALVANISING SHALL CONFORM TO IS:2629-1985 & IS:4759-1996.
 - SPRING WASHER SHALL BE CONFIRM TO IS 3063-1994
 - STEP BOLTS SHALL BE DIAGONALLY OPPOSITE LEGS
 - STEP BOLTS SHALL BE IS:10238-1982
 - SUFFIX "H" INDICATES HIGH TENSILE STEEL
 - INDICATES MEMBERS USED AS STEP-BOLTS

MARK Nos. 925 TO 947

BIHAR STATE POWER TRANSMISSION COMPANY LTD

DRAWN BY	DESCRIPTION	132KV D/C TOWER TYPE "DA" +9M BODY EXTENSION-TOP PART		SCALE
CHECKED BY	DRG NO	132KV-D/C-Struct-+9M-Extn-Top-18	SHEET NO 1-1	REV. 0
APPROVED BY				