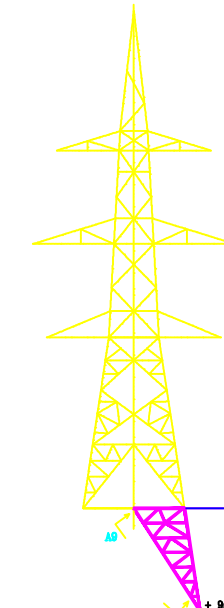
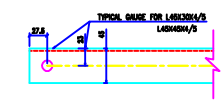
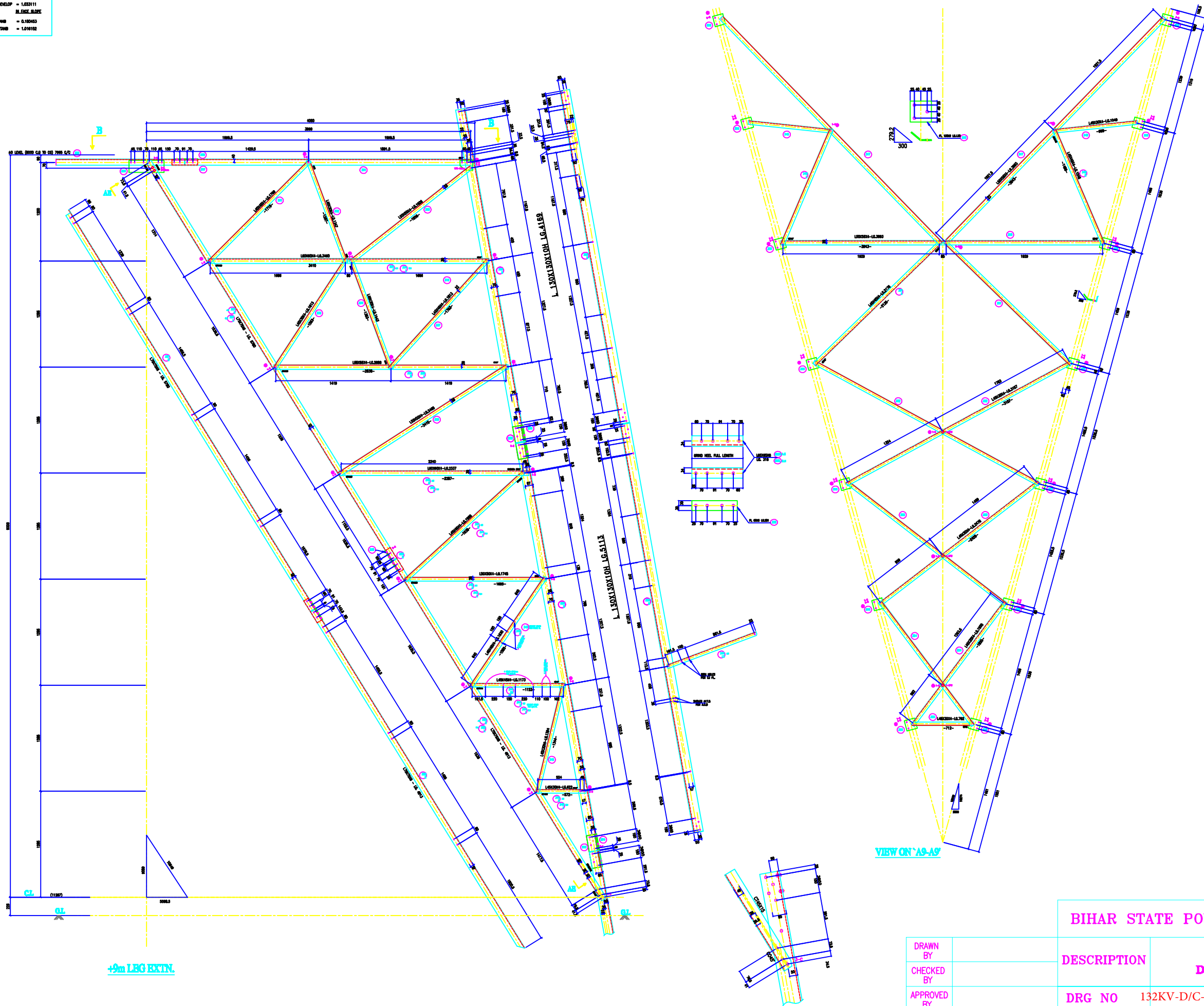


VERTICAL SCALE
 1MM = 0.183264
 2MM = 0.366528
 FACE = 1.271436
 DEVELOP = 1.271436
 1MM = 0.183264
 2MM = 0.366528



BOLTS AND NUTS STATEMENT

TYPE	SIZE (N MM)	+9M LEG EXTN	QUANTITY	PLAN B-B
B	# 16X35	36	2	2
C	# 16X40	71	14	-
D	# 16X45	18	-	-
E	# 16X50	16	-	-
F	# 16X55	-	-	-
G	# 16X60	-	-	-
H	# 16X65	-	-	-
J	# 16X70	-	-	-
K	# 16X75	-	-	-
L	# 16X80	-	-	-
SPRING WASHERS		141	16	
30 O.D. PACKING WASHERS # 17.5 MM				
	5 mm	7		
	6 mm	-		
	8 mm	-		
	10 mm	2		
STEP BOLTS #16 mm X 175mm		16		

- GENERAL NOTES:**
1. ALL DIMENSIONS ARE IN MM UNLESS OTHERWISE SPECIFIED.
 2. MILD STEEL BOLT AND NUTS TO IS 8038/12427/5.6 QLY.
 3. ALL MILD STEEL BOLT AND NUTS ARE TO BE HOT DIP GALVANIZED AS PER ASTM A553.
 4. ALL MILD STEEL SECTIONS SHALL BE OF TESTED QUALITY CONFORMING TO IS 2062 STANDARD.
 5. GALVANIZATION OF TOWER MEMBERS AND FLAT WASHERS AS PER IS 2029 TO IS 2062 STANDARD.
 6. ALL HOLES # 13.0mm FOR #12mm BOLTS.
 7. ALL HOLES # 17.0mm FOR #16mm BOLTS.
 8. ALL HOLES # 21.0mm FOR #20mm BOLTS.
 9. ALL HOLES # 17.0mm FOR #16mm STEP BOLTS.
 10. SLOTTED SPRING WASHERS ARE TO BE USED UNDER EACH NUT.
 11. ALL FABRICATED MEMBERS SHALL HAVE PROTECTIVE PAINT.
 12. INDICATES MEMBERS BEING USED AS STEP BOLTS.
 13. STEP BOLTS ARE TO BE PROVIDED ON TWO DIAGONALLY OPP. LEGS.

MARK NO: 325-356, 203, 204, 309, 226

BIHAR STATE POWER TRANSMISSION COMPANY LTD

DRAWN BY	DESCRIPTION	132KV D/C TOWER TYPE "DD" DETAIL OF +9M LEG EXTENSION	SCALE	-
CHECKED BY	DRG NO	132KV-D/C-Struct-±9M-leg-Extn-410	SHEET NO	1-1
APPROVED BY			REV.	0