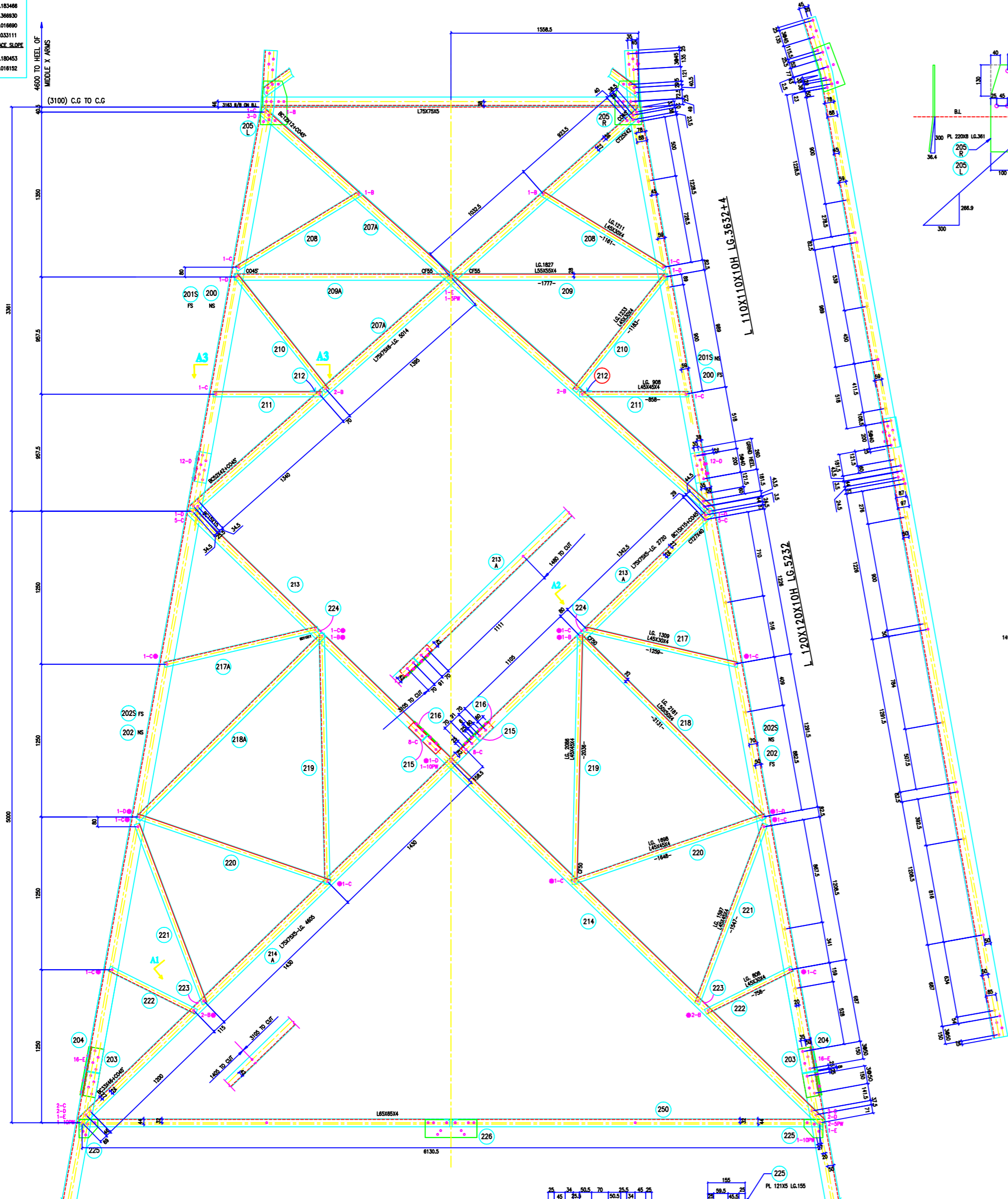
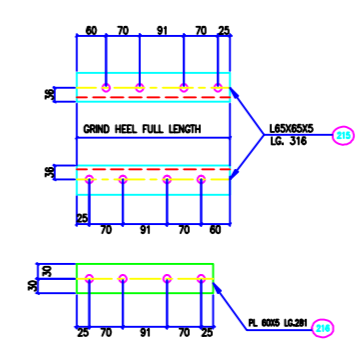
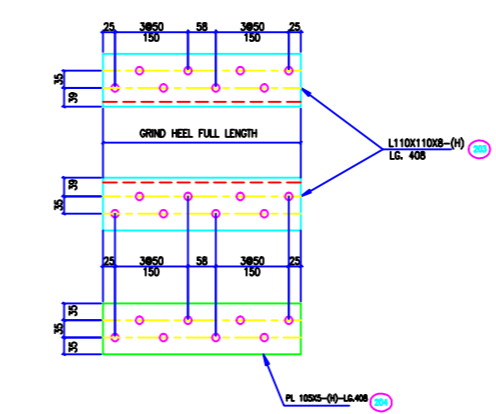
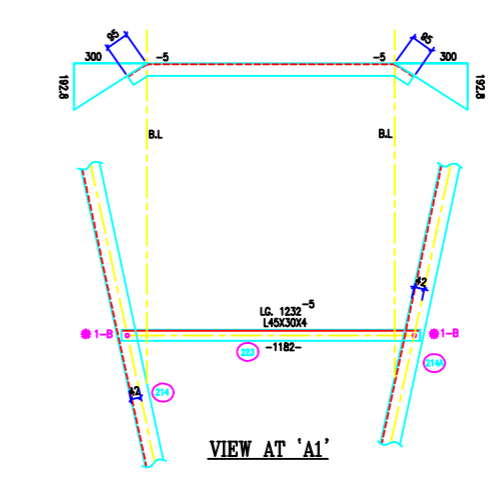
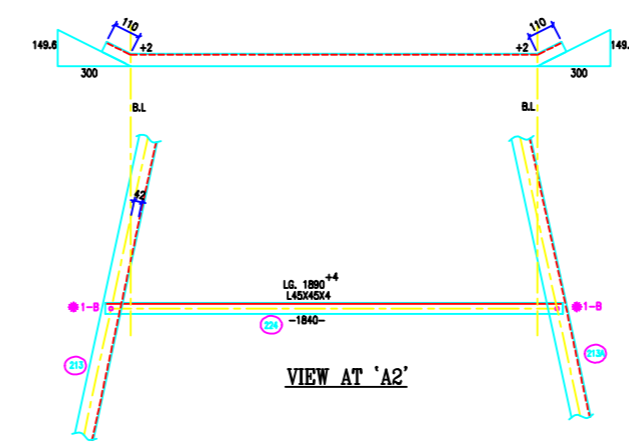
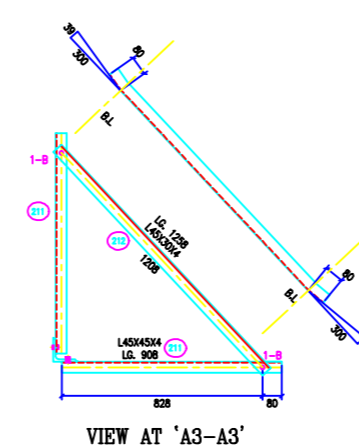
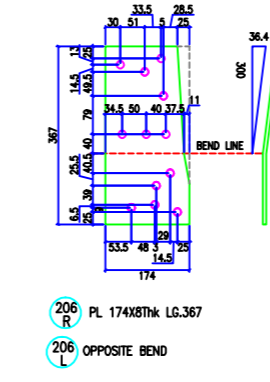
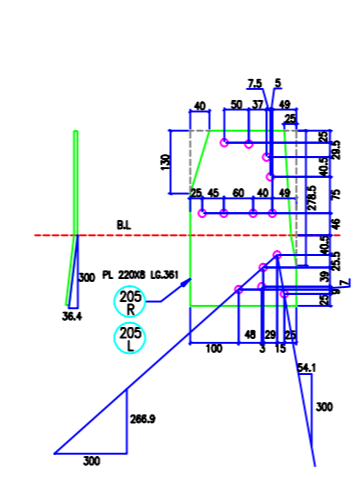


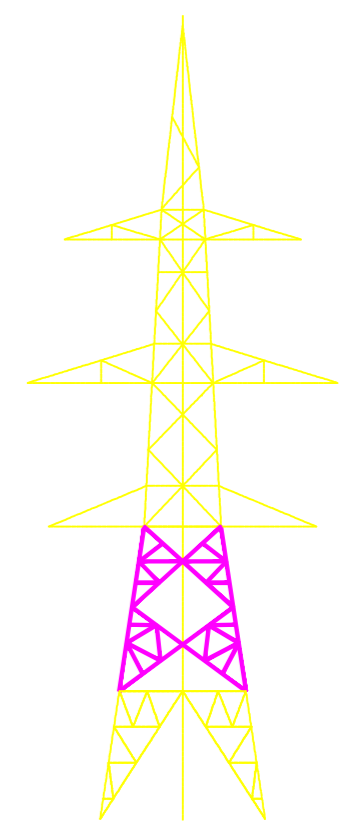
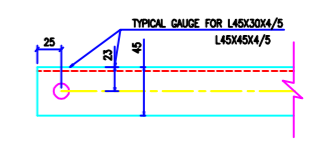
VERTICAL SLOPE
 TMB = 0.183466
 ZTMB = 0.366930
 FACE = 1.016990
 DEVELOP = 1.031111
 BL/DGE SIZE
 TMB = 0.183463
 ZTMB = 1.016152



BASIC BODY



BOLT SIZE	QNTY	FOR NLT			
		HEX	ATB	HEX	ATB
# 16X35	76	36	40	76	0
# 16X40	176	136	40	176	0
# 16X45	124	112	12	124	0
# 16X50	76	76	0	76	0
SPRING WASHERS	452	360	92	452	0
STEP BOLTS	32	32		32	
5 mm PACK WASHER	12	12		12	
6 mm PACK WASHER	0	0		0	
8 mm PACK WASHER	0	0		0	
10 mm PACK WASHER	16	16		16	



BOLTS AND NUTS STATEMENT			
TYPE	SIZE (N MM)	±0 LEG	QUANTITY
B	# 16X35	76	
C	# 16X40	176	
D	# 16X45	124	
E	# 16X50	76	
F	# 16X55	-	
G	# 16X60	-	
H	# 16X65	-	
J	# 16X70	-	
K	# 16X75	-	
L	# 16X80	-	
SPRING WASHERS		456	
30 O.D. PACKING WASHERS # 17.5 MM			
	5 mm	12	
	6 mm	-	
	8 mm	-	
	10 mm	16	
STEP BOLTS #16 mm X 175mm		32	

- GENERAL NOTES:
1. ALL DIMENSIONS ARE IN MM UNLESS OTHERWISE SPECIFIED.
 2. MILD STEEL BOLT AND NUTS TO IS 5668/1242/5.6 QTY
 3. ALL MILD STEEL BOLT AND NUTS ARE TO BE HOT DIP GALVANISED AS PER ASTM A153
 4. ALL MILD STEEL SECTIONS SHALL BE OF TESTED QUALITY CONFORMING TO IS 2062 STANDARD
 5. GALVANIZATION OF TOWER MEMBERS AND FLAT WASHERS AS PER IS 2629 TO IS 2062 STANDARD
 6. ALL HOLES # 13.5mm FOR #12mm BOLTS
 7. ALL HOLES # 17.5mm FOR #16mm BOLTS
 8. ALL HOLES # 21.5mm FOR #20mm BOLTS
 9. ALL HOLES # 17.5mm FOR #16mm STEP BOLTS
 10. STANDARD SPRING WASHERS ARE TO BE USED UNDER EACH NUT
 11. ALL FABRICATED MEMBERS SHALL HAVE PREFIX
 12. INDICATES MEMBER BEING USED AS STEP BOLTS
 13. STEP BOLTS ARE TO BE PROVIDED ON TWO DIAGONALLY OPP. LEGS

MARK NO: 206-226

BIHAR STATE POWER TRANSMISSION COMPANY LTD

DRAWN BY	DESCRIPTION	132KV D/C TOWER TYPE "DD" DETAIL OF BASIC BODY	SCALE	-
CHECKED BY	DRG NO	132KV-D/C-Struct-Body-42	SHEET NO	1-1
APPROVED BY	REV.	0		