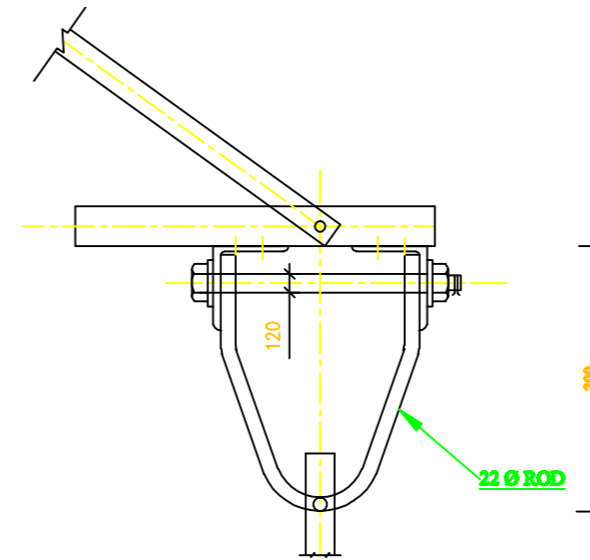
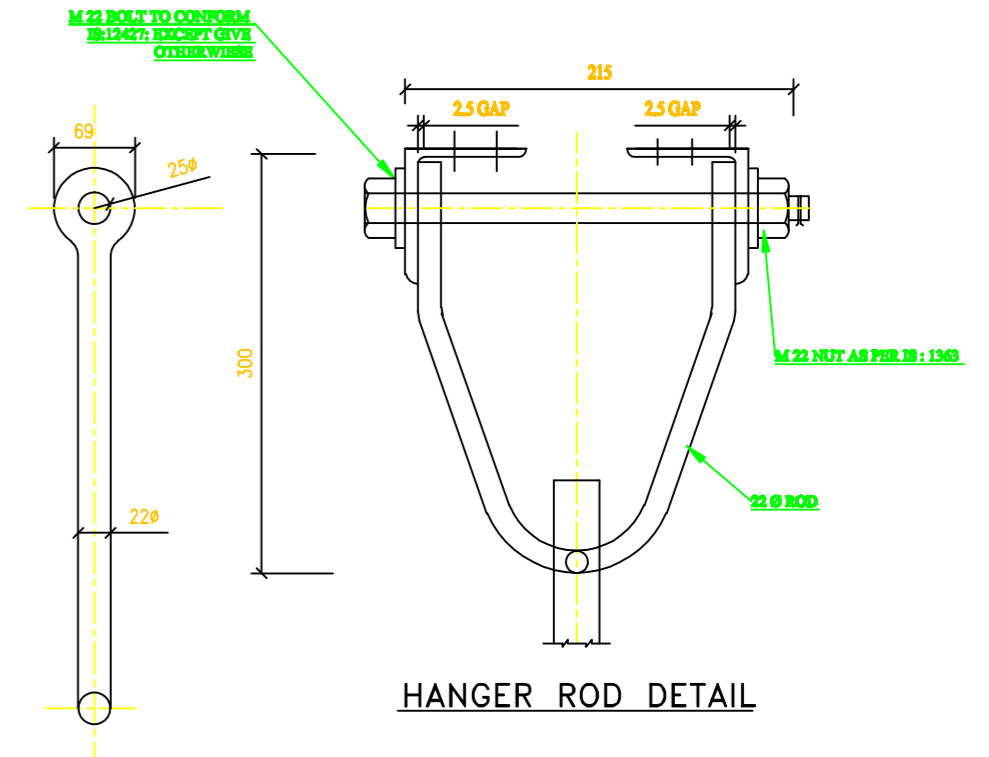


VIEW-B3 B3

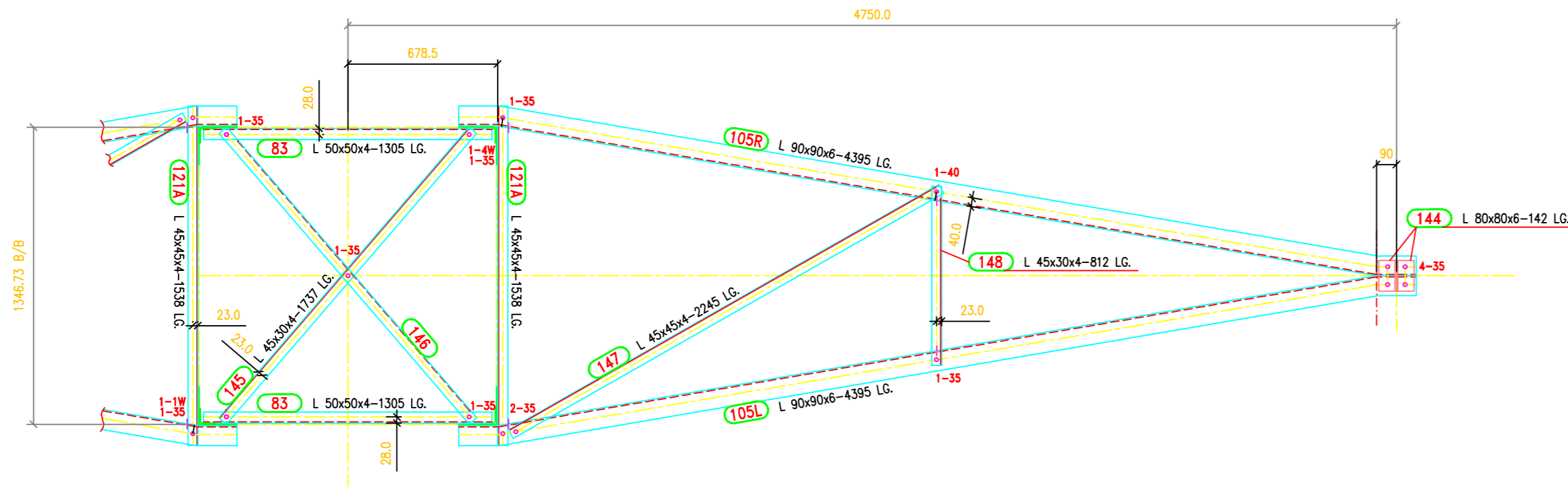
BOTTOM PLAN OF TOP CROSS ARM



TYPICAL CROSSARMY DETAIL



HANGER ROD DETAIL



VIEW-B2 B2

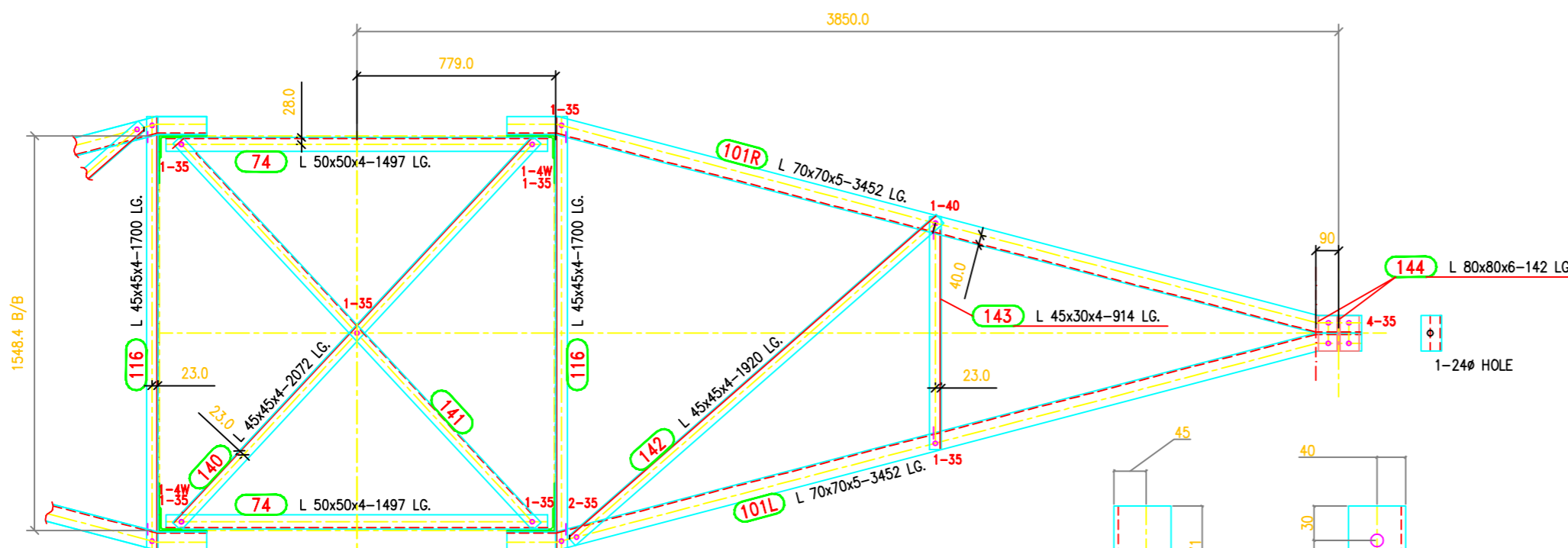
BOTTOM PLAN OF MIDDLE CROSS ARM

**SUMMARY OF BOLTS FOR CROSS ARMS PLAN VIEWS**

BOLT SIZE	QUANTITY	GRADE	REMARKS
16Ø x 35 LG	-	5.6	-
16Ø x 40 LG	-	5.6	-
16Ø x 45 LG	-	5.6	-
16Ø x 50 LG	-	5.6	-
16Ø x 55 LG	-	5.6	-
16Ø x 60 LG	-	5.6	-
16Ø x 65 LG	-	5.6	-
16Ø x 3.5 THK	-	-	SPRING WASHERS
16Øx175 LG.	-	4.6	STEP BOLT
4THK. WASHER	-	-	PACK WASHERS
6THK. WASHER	-	-	PACK WASHERS
8THK. WASHER	-	-	PACK WASHERS
10THK. WASHER	-	-	PACK WASHERS

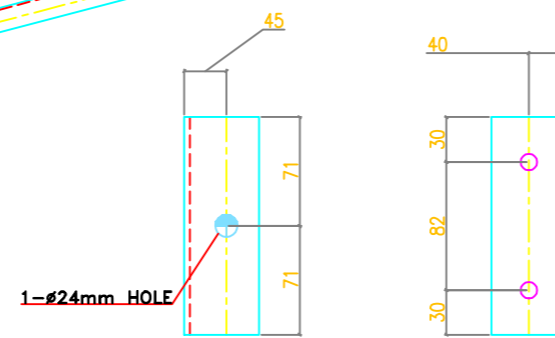
**GENERAL NOTES :**

- ALL DIMENSIONS ARE IN "mm" UNLESS OTHERWISE SPECIFIED.
- ALL ERECTION MARKS ARE TO BE PREFIXED WITH - "1DA"
- INDICATES Ø17.5 HOLE FOR M16 BOLT U.O.S.
- STRUCTURAL STEEL SHALL BE AS FOLLOWS  
(i) MILD STEEL - IS:2062 WITH YIELD STRESS  $F_y=2550$  KG/SQ.CM.  
(ii) HIGH TENSILE STEEL - IS:8500 GR490B
- BOLTS AND NUTS AS PER IS:12427 - 1988. CONFORM TO GRADE-5.6
- GALVANISING SHALL CONFORM TO IS:2629-1985 & IS:4759-1996.
- SPRING WASHER SHALL BE CONFORM TO IS 3063-1994
- STEP BOLTS SHALL BE DIAGONALLY OPPOSITE LEGS
- STEP BOLTS SHALL BE IS:10238-1982
- SUFFIX "H" INDICATES HIGH TENSILE STEEL



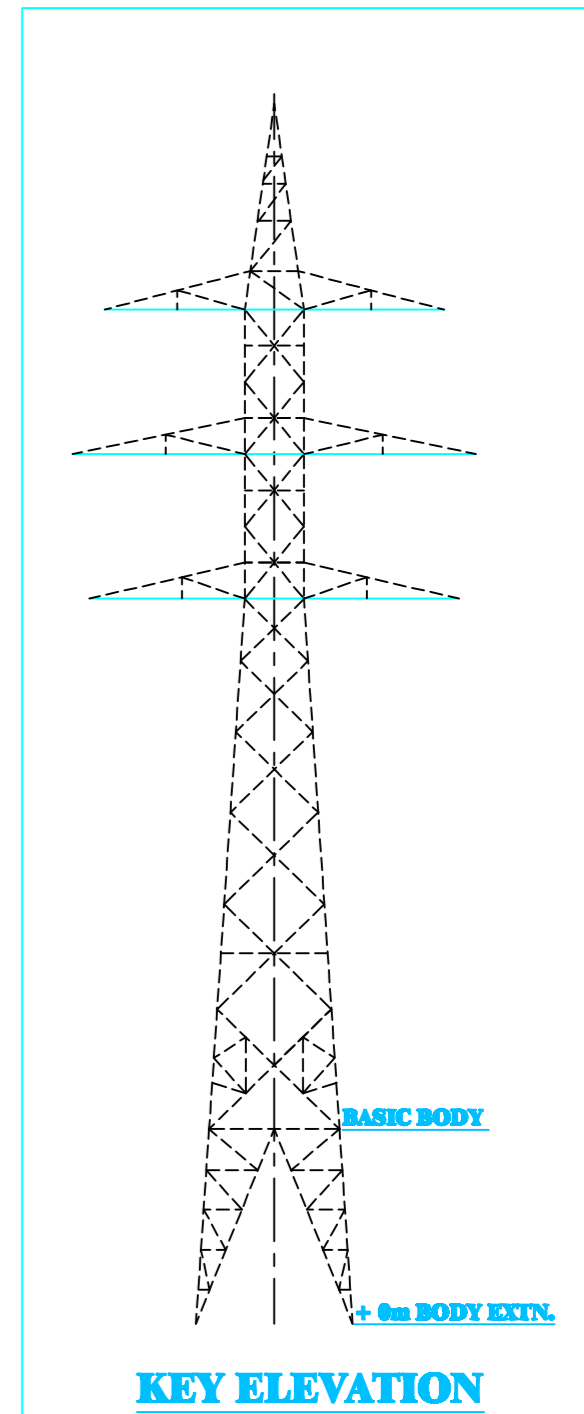
VIEW-B1 B1

BOTTOM PLAN OF BOTTOM CROSS ARM



144 L 80x80x6 - 142 LG.

MARK Nos. 140 TO 152



KEY ELEVATION

BIHAR STATE POWER TRANSMISSION COMPANY LTD

DRAWN BY		DESCRIPTION	132KV D/C TOWER TYPE "DA" CROSS ARMS - PLAN VIEWS	SCALE	-
CHECKED BY		DRG NO	132KV-D/C-Struct-Cross-15	SHEET NO	1-1
APPROVED BY				REV.	0