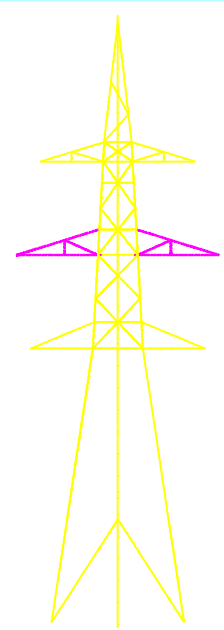
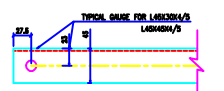
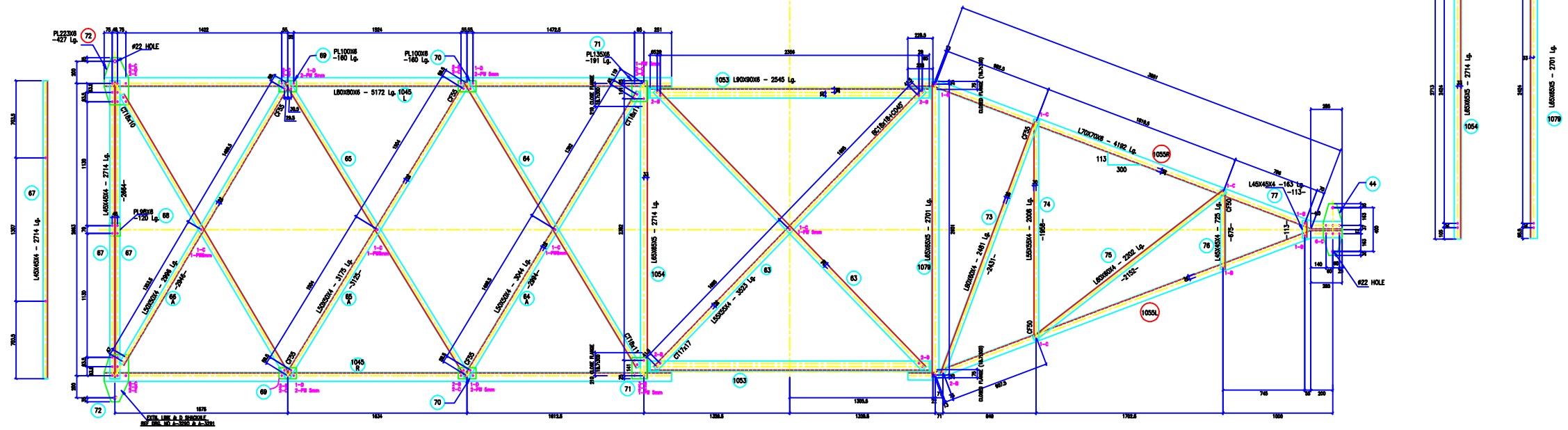
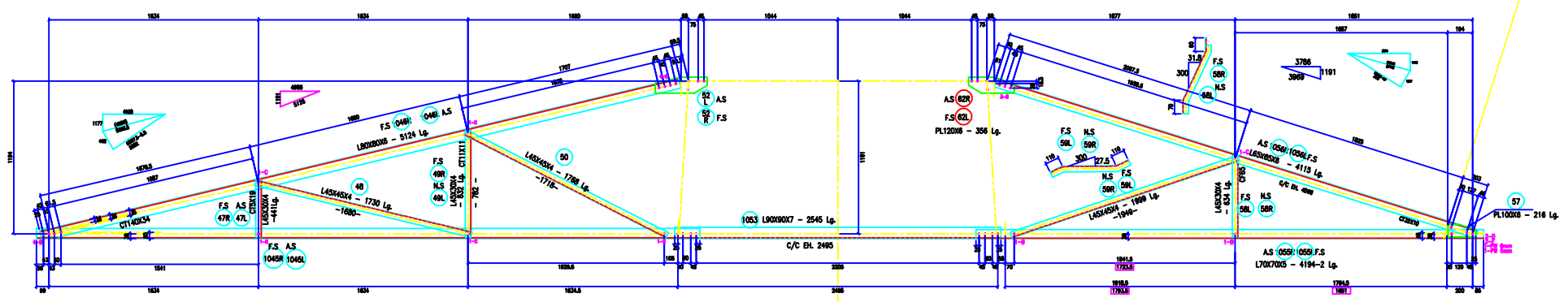
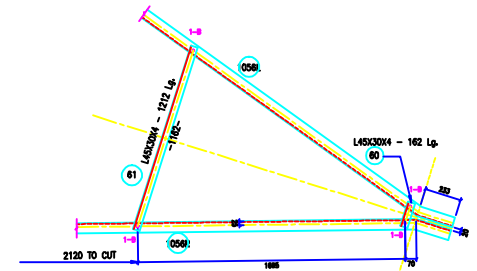
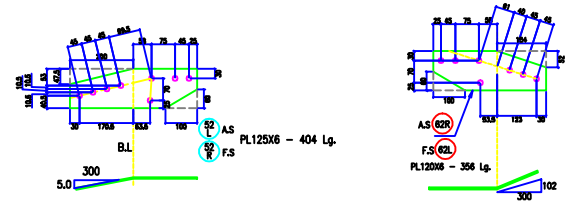
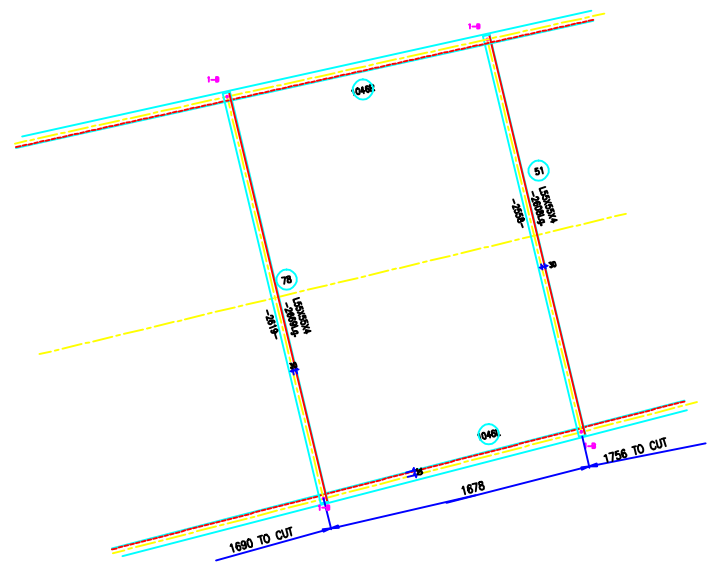


VERTICAL SCALE
 1:100
 1:200
 1:300
 1:400
 1:500
 1:600
 1:700
 1:800
 1:900
 1:1000



BOLTS AND NUTS STATEMENT			
TYPE	SIZE (N MM)	X-ARM	QUANTITY
B	# 16X35	70	
C	# 16X40	45	
D	# 16X45	6	
E	# 16X50	4	
F	# 16X55	3	
G	# 16X60	-	
H	# 16X65	-	
J	# 16X70	-	
K	# 16X75	-	
L	# 16X80	-	
SPRING WASHERS			128
30 O.D. PACKING WASHERS # 17.5 MM			
5 mm		12	
6 mm		5	
8 mm		-	
10 mm		-	
STEP BOLTS #16 mm X 175mm			-

- GENERAL NOTES:
1. ALL DIMENSIONS ARE IN mm UNLESS OTHERWISE SPECIFIED.
 2. MILD STEEL BOLT AND NUTS TO IS 8000/1247/5.6 QLVY.
 3. ALL MILD STEEL BOLT AND NUTS ARE TO BE HOT DIP GALVANIZED AS PER ASTM A553.
 4. ALL MILD STEEL SECTIONS SHALL BE OF TESTED QUALITY CONFORMING TO IS 2062 STANDARD.
 5. GALVANIZATION OF TOWER MEMBERS AND FLAT WASHERS AS PER IS 2029.
 6. ALL HOLES # 13.5mm FOR #12mm BOLTS.
 7. ALL HOLES # 17.5mm FOR #16mm BOLTS.
 8. ALL HOLES # 21.5mm FOR #20mm BOLTS.
 9. ALL HOLES # 17.5mm FOR #16mm STEP BOLTS.
 10. STANDARD SPRING WASHERS ARE TO BE USED UNDER EACH NUT.
 11. ALL FABRICATED MEMBERS SHALL HAVE PROTECTIVE PAINT.
 12. INDICATES MEMBERS BEING USED AS STEP BOLTS.
 13. STEP BOLTS ARE TO BE PROVIDED ON TWO DIAGONALLY OPP. LEGS.

MARK NO: 45-79

BIHAR STATE POWER TRANSMISSION COMPANY LTD

DRAWN BY	DESCRIPTION	132KV D/C TOWER TYPE "DD" DETAIL OF MIDDLE 'X' ARM	SCALE	-
CHECKED BY	DRG NO	132KV-D/C-Struct-Middle-X-46	SHEET NO 1-1	REV. 0
APPROVED BY				