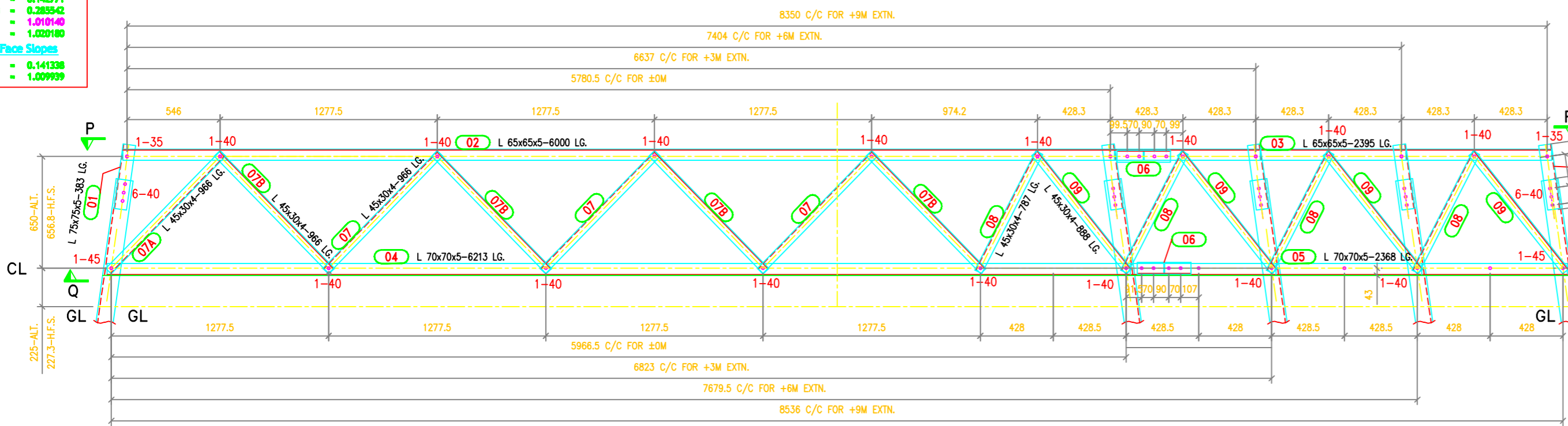
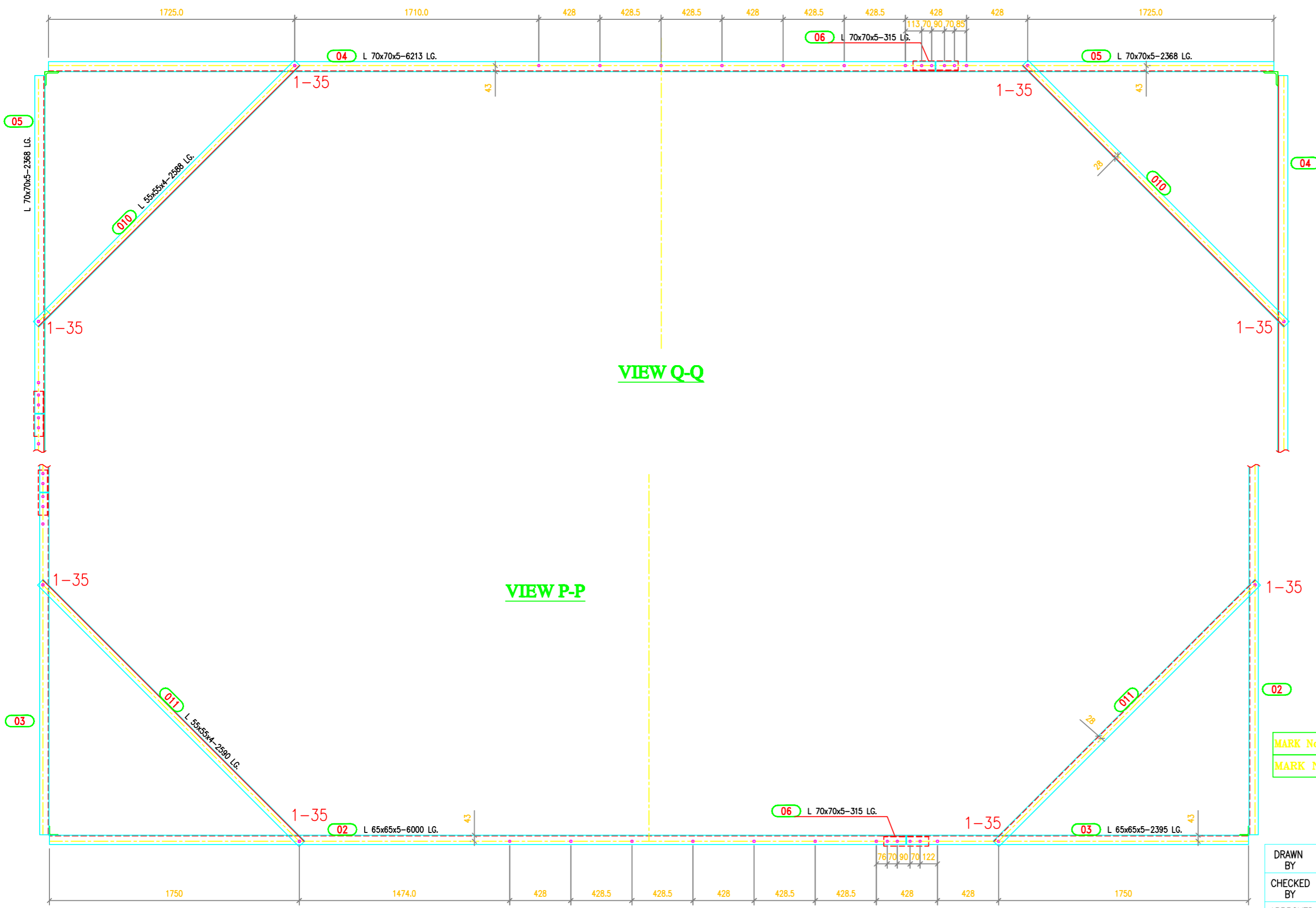


TOWER SLOPE
(FOR ±0M TOWER-DB)
Tan B = 0.142771
2 Tan B = 0.285542
Dev = 1.010140
Dev = 1.020180
In Face Slopes
Tan B = 0.141338
Sec B = 1.009999

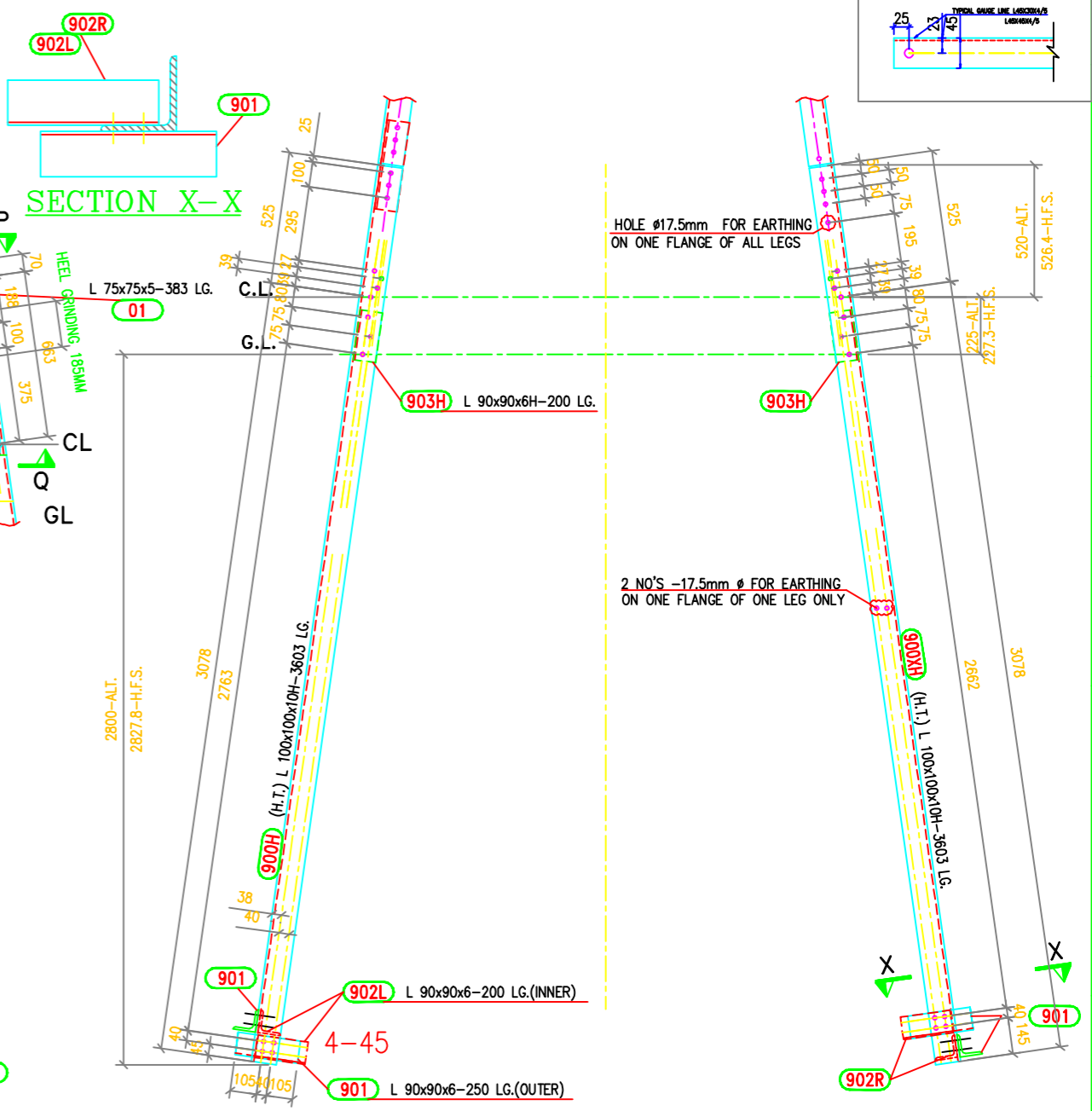


ELEVATION OF TEMPLATE

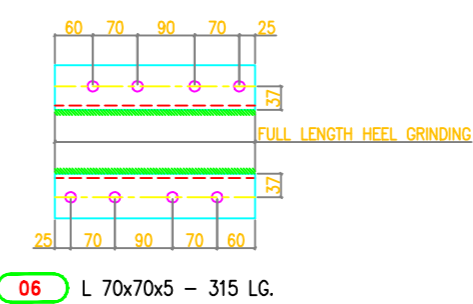
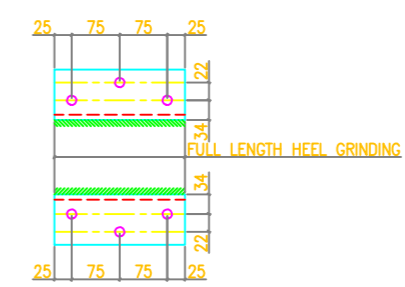
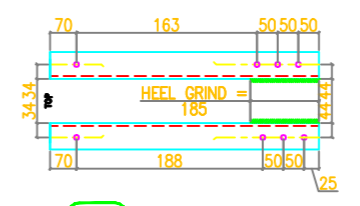


VIEW Q-Q

VIEW P-P



ELEVATION OF STUB



SUMMARY OF BOLTS FOR STUB & STUB SETTING TEMPLATE

BOLT SIZE	QUANTITY FOR STUB	QUANTITY FOR TEMPLATE	GRADE	REMARKS
16φ x 35 LG	0	88	5.6	-
16φ x 40 LG	-	76	5.6	-
16φ x 45 LG	56	8	5.6	-
16φ x 50 LG	-	-	5.6	-
16φ x 55 LG	-	-	5.6	-
16φ x 60 LG	-	-	5.6	-
16φ x 65 LG	-	-	5.6	-
16φ x 3.5 THK	56	172		SPRING WASHERS

- GENERAL NOTES :**
- ALL DIMENSIONS ARE IN "mm" UNLESS OTHERWISE SPECIFIED.
 - ALL ERECTION MARKS ARE TO BE PREFIXED WITH - "10A"
 - INDICATES 17.5 HOLE FOR M16 BOLT U.O.S.
 - STRUCTURAL STEEL SHALL BE AS FOLLOWS
(i) MILD STEEL - IS:2062 WITH YIELD STRESS Fy=2550 KG/SQ.CM.
(ii) HIGH TENSILE STEEL - IS:8500 GR490B
 - BOLTS AND NUTS AS PER IS:12427 - 1988. CONFORM TO GRADE-5.6
 - GALVANISING SHALL CONFORM TO IS:2629-1985 & IS:4759-1996.
 - SPRING WASHER SHALL BE CONFORM TO IS 3063-1994
 - STEP BOLTS SHALL BE DIAGONALLY OPPOSITE LEGS
 - STEP BOLTS SHALL BE IS:10238-1982
 - SUFFIX "H" INDICATES HIGH TENSILE STEEL

MARK Nos. 01 TO 011 FOR STUB SETTING TEMPLATE
MARK Nos. 900 TO 903 FOR STUB

BIHAR STATE POWER TRANSMISSION COMPANY LTD

DRAWN BY	DESCRIPTION	132KV D/C TOWER TYPE "DB" STUB & STUB SETTING TEMPLATE	SCALE	-
CHECKED BY	DRG NO	132KV-D/C-Struct-Stub-Temp-21	SHEET NO 1-1	REV. 0
APPROVED BY				