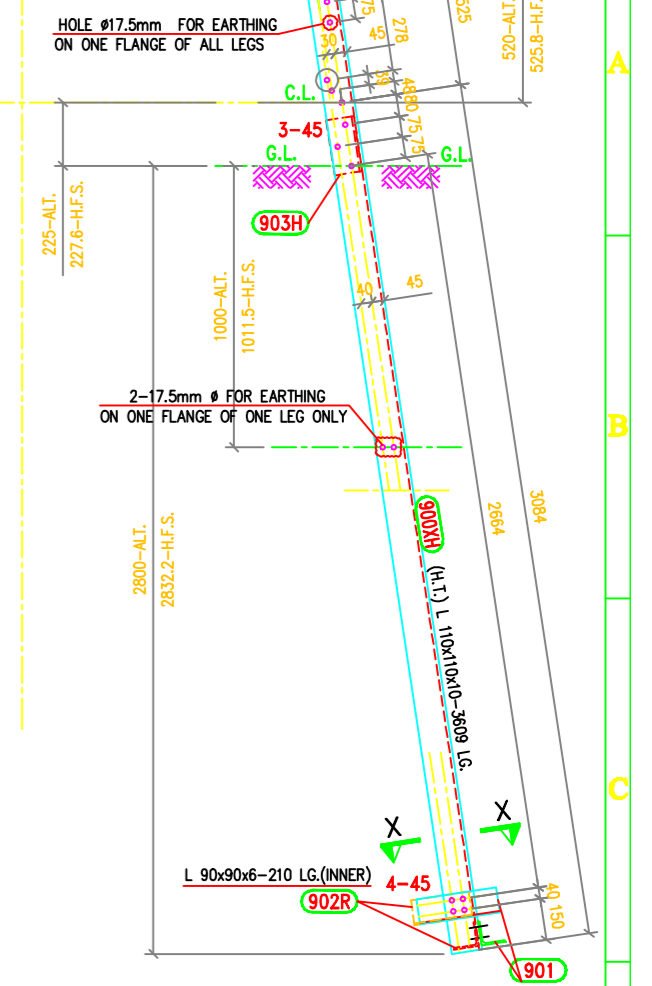
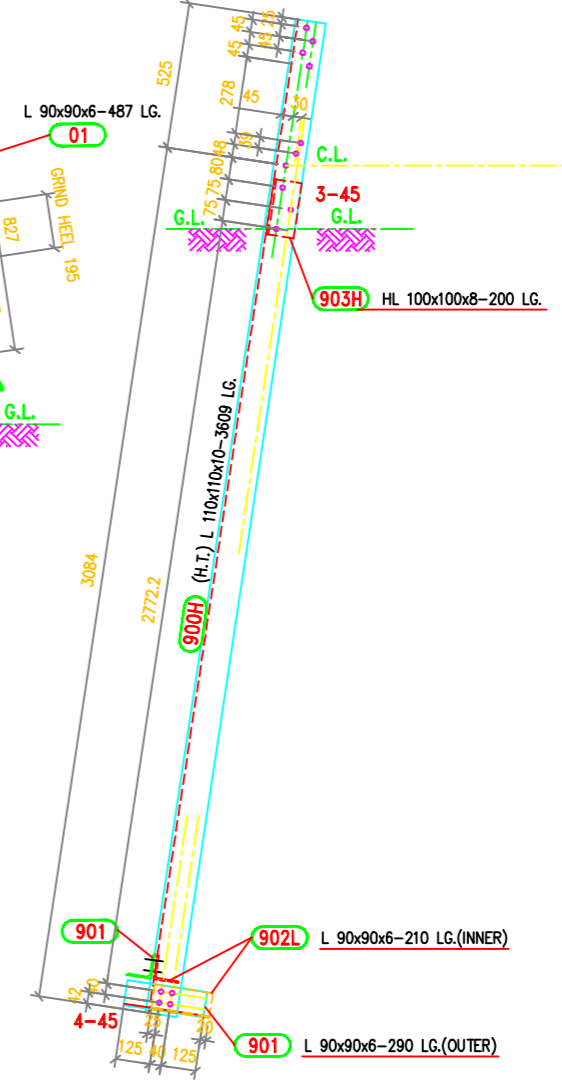
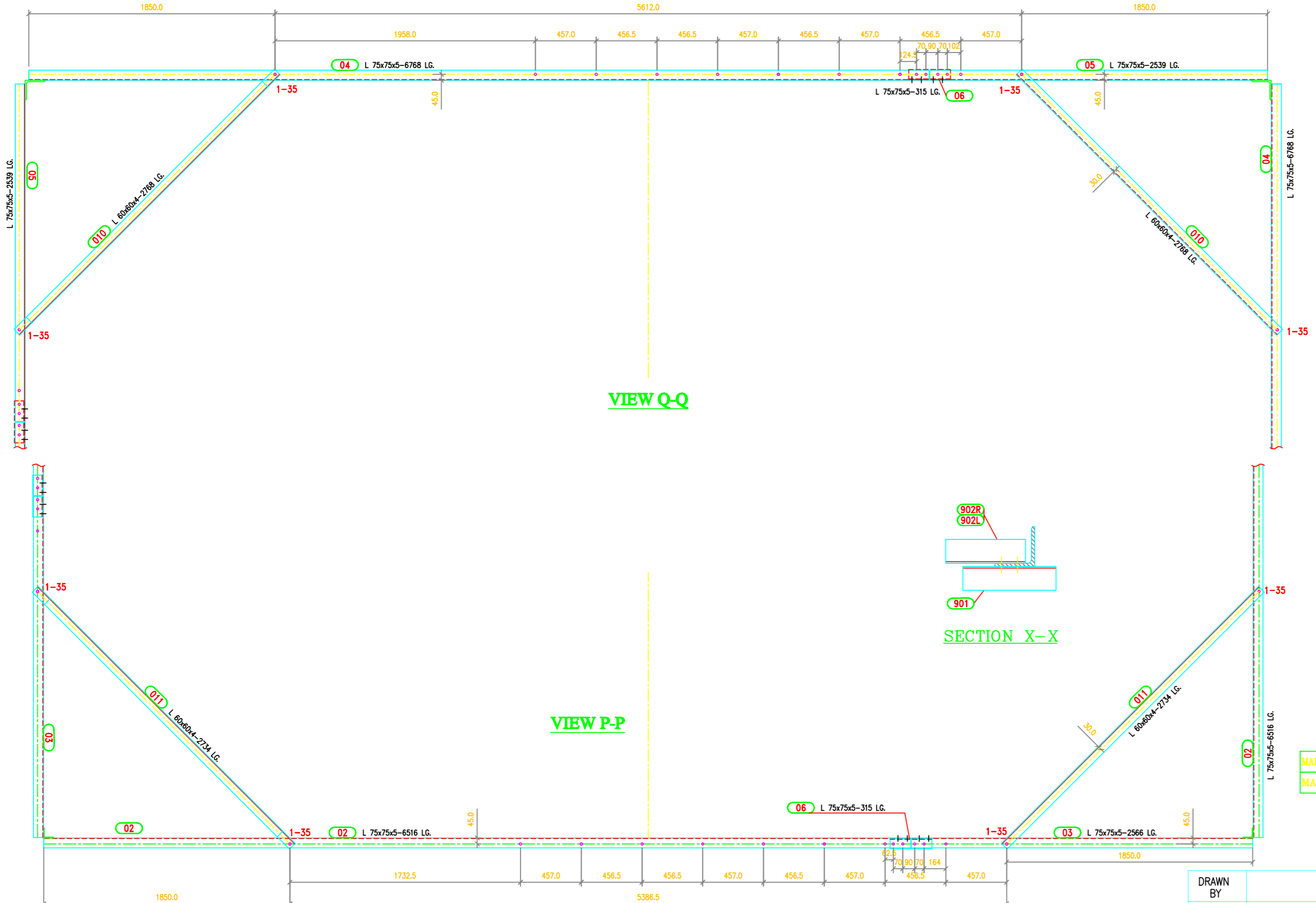
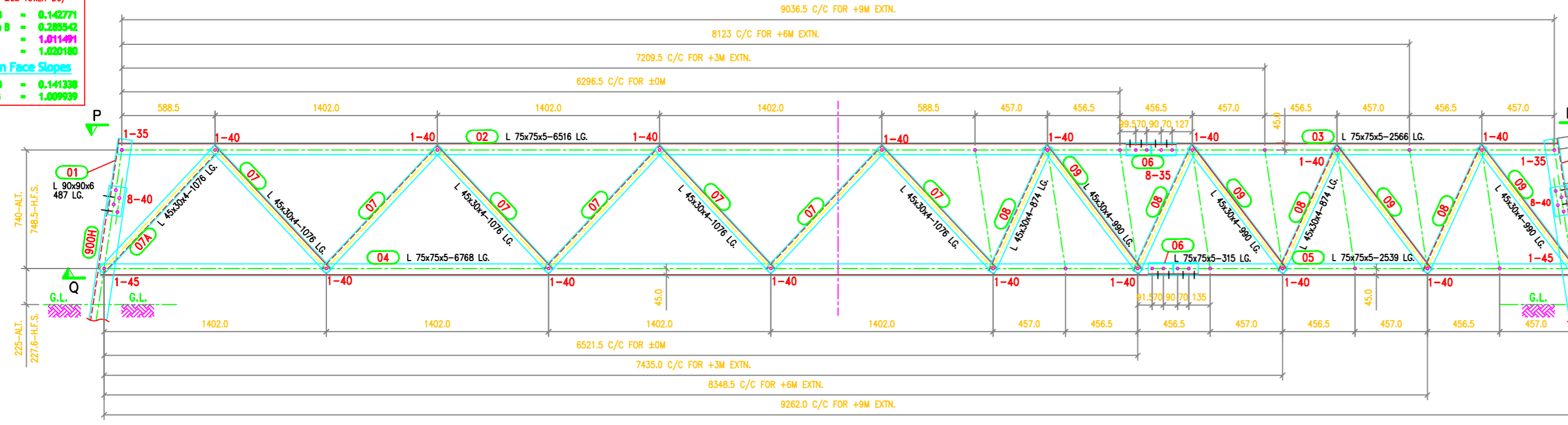
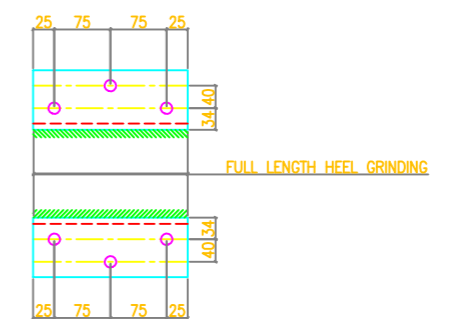


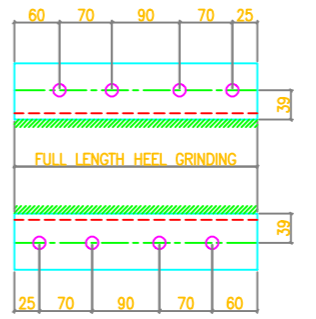
TOWER SLOPE
(FOR ±0M TOWER-DC)
Tan B = 0.142771
2.Tan B = 0.285542
Pitch = 8.181491°
Slope = 1.020180
In Face Slopes
Tan B = 0.141338
Sec B = 1.009929



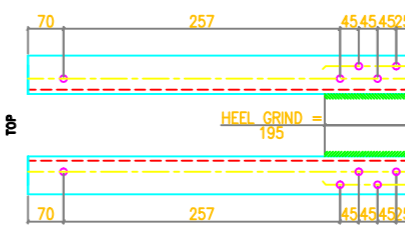
ELEVATION OF STUB



1DC-903H (H.T.) L 100x100x8 - 200 LG.



1DC-06 L 75x75x5 - 315 LG.



1DC-01 L 90x90x6 - 487 LG.

MARK Nos. 01 TO 011 FOR STUB SETTING TEMPLATE
MARK Nos. 900 TO 903 FOR STUB

SUMMARY OF BOLTS FOR STUB & STUB SETTING TEMPLATE

BOLT SIZE	QUANTITY FOR STUB	QUANTITY FOR TEMPLATE	GRADE	REMARKS
16# x 35 LG	0	88	5.6	-
16# x 40 LG	-	84	5.6	-
16# x 45 LG	56	8	5.6	-
16# x 50 LG	-	-	5.6	-
16# x 55 LG	-	-	5.6	-
16# x 60 LG	-	-	5.6	-
16# x 65 LG	-	-	5.6	-
16# x 3.5 THK	56	180		SPRING WASHERS

- GENERAL NOTES :**
- ALL DIMENSIONS ARE IN "mm" UNLESS OTHERWISE SPECIFIED.
 - ALL ERECTION MARKS ARE TO BE PREFIXED WITH - "1DA"
 - Ø INDICATES #17.5 HOLE FOR M16 BOLT U.O.S.
 - STRUCTURAL STEEL SHALL BE AS FOLLOWS
(i) MILD STEEL - IS:2062 WITH YIELD STRESS Fy=2550 KG/SQ.CM.
(ii) HIGH TENSILE STEEL - IS:8500 GR490B
 - BOLTS AND NUTS AS PER IS:12427 - 1988, CONFORM TO GRADE=5.6
 - GALVANISING SHALL CONFORM TO IS:2629-1985 & IS:4759-1996.
 - SPRING WASHER SHALL BE CONFORM TO IS 3063-1994
 - STEP BOLTS SHALL BE DIAGONALLY OPPOSITE LEGS
 - STEP BOLTS SHALL BE IS:10238-1982
 - SUFFIX "H" INDICATES HIGH TENSILE STEEL

BIHAR STATE POWER TRANSMISSION COMPANY LTD

DESCRIPTION	132KV D/C TOWER TYPE "DC" STUB & STUB SETTING TEMPLATE	SCALE	-
DRG NO	132KV-D/C-Struct-Stub-Temp-31	SHEET NO 1-1	REV. 0

DRAWN BY
CHECKED BY
APPROVED BY