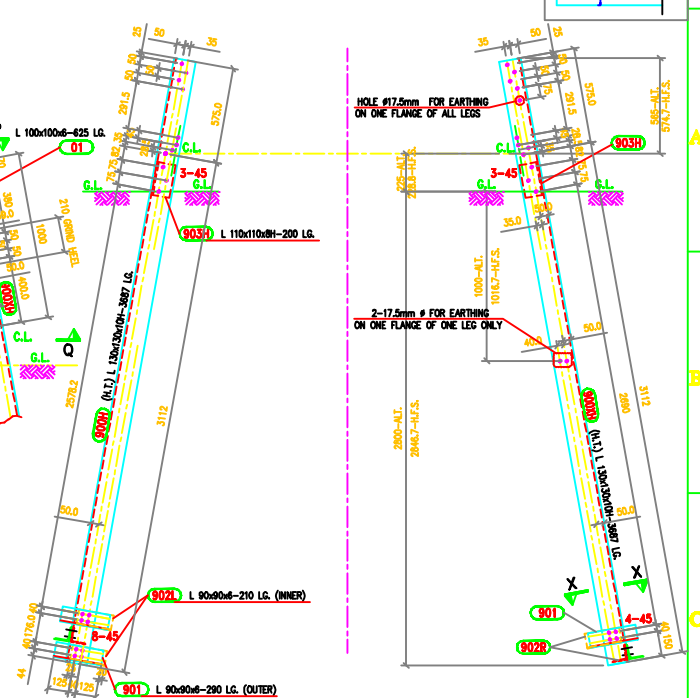
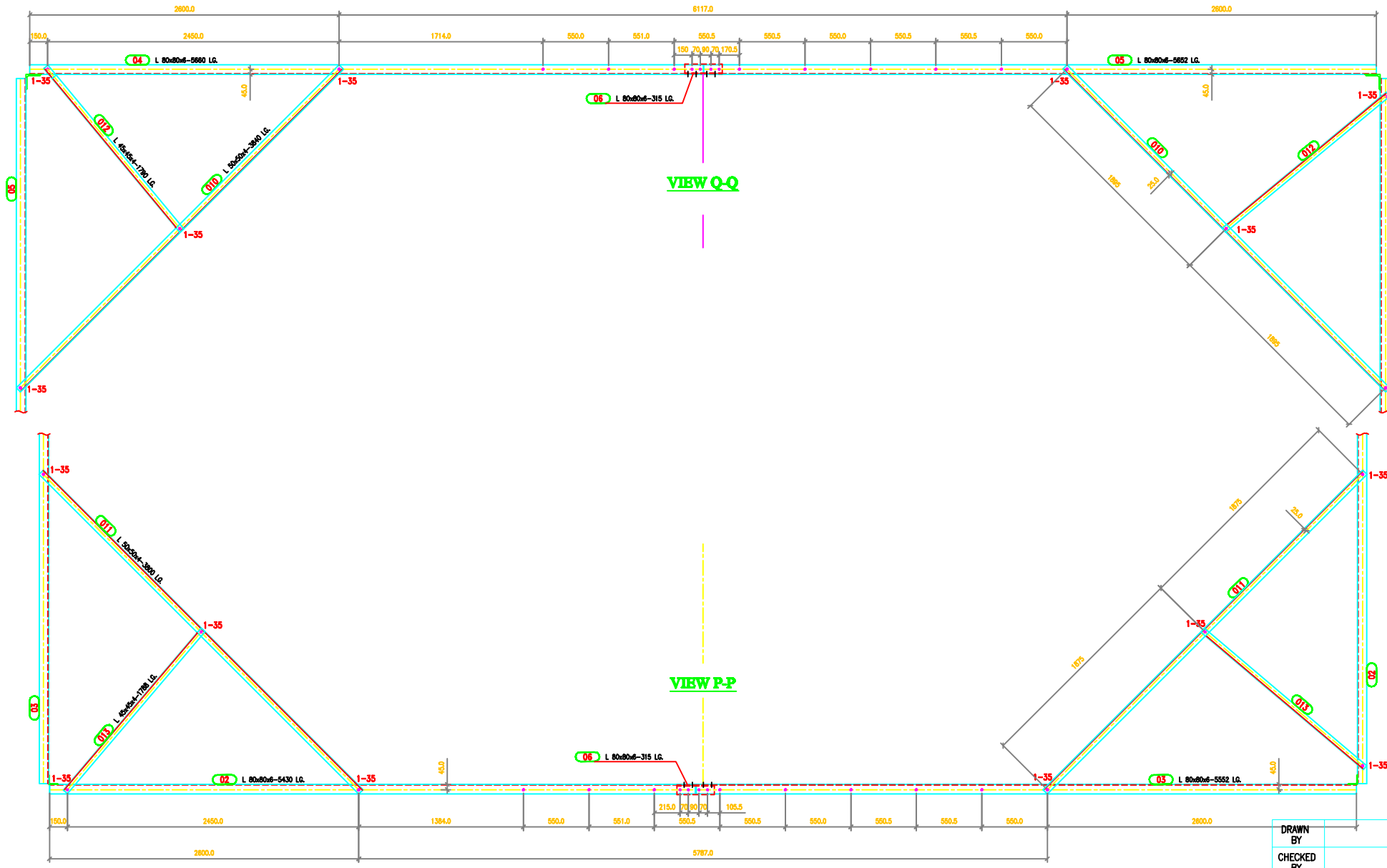
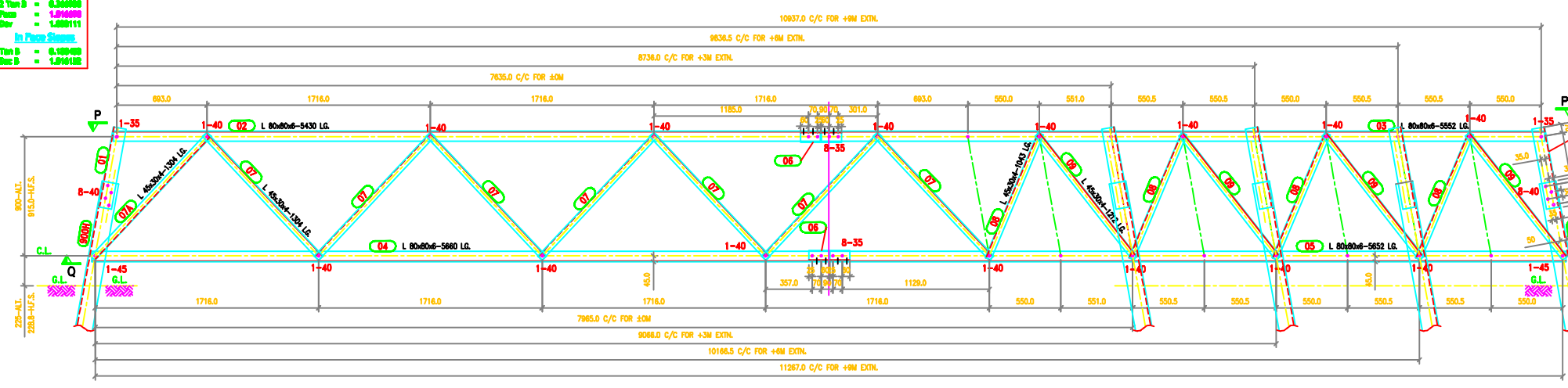
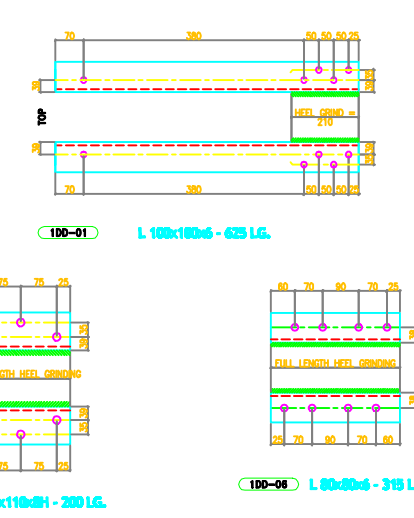


TOWER SLOPE
(FOR ±M TOWER-DD)
 Top D = 0.100400
 Top E = 0.100400
 Top F = 1.000111
 Top G = 1.000111
 In Case Slope
 Top D = 0.100400
 Top E = 1.000111



ELEVATION OF STUB



GENERAL NOTES:

1. ALL DIMENSIONS ARE IN "mm" UNLESS OTHERWISE SPECIFIED.
2. ALL ERECTION MARKS ARE TO BE PREFIXED WITH - "10A"
3. ○ INDICATES #17.5 HOLE FOR M16 BOLT U.O.S.
4. STRUCTURAL STEEL SHALL BE AS FOLLOWS
 (1) MILD STEEL - IS:2062 WITH YIELD STRESS $F_y=2550$ KG/SQ.CM.
 (2) HIGH TENSILE STEEL - IS:8500 GR4808
5. BOLTS AND NUTS AS PER IS:12427 - 1988. CONFORM TO GRADE-5.6
6. GALVANISING SHALL CONFORM TO IS:2629-1985 & IS:4759-1996.
7. SPRING WASHER SHALL BE CONFORM TO IS 3063-1994
8. STEP BOLTS SHALL BE DIAGONALLY OPPOSITE LEGS
9. STEP BOLTS SHALL BE IS:10238-1982
10. SUFFIX "H" INDICATES HIGH TENSILE STEEL

MARK Nos. 01 TO 013 FOR STUB SETTING TEMPLATE
 MARK Nos. 900 TO 903 FOR STUB

SUMMARY OF BOLTS FOR STUB & STUB SETTING TEMPLATE				
BOLT SIZE	QUANTITY FOR STUB	QUANTITY FOR TEMPLATE	GRADE	REMARKS
16# x 35 LG	0	104	5.6	-
16# x 40 LG	-	92	5.6	-
16# x 45 LG	72	8	5.6	-
16# x 50 LG	-	-	5.6	-
16# x 55 LG	-	-	5.6	-
16# x 60 LG	-	-	5.6	-
16# x 65 LG	-	-	5.6	-
16# x 3.5 THK	72	204	-	SPRING WASHERS

DRAWN BY
 CHECKED BY
 APPROVED BY

BIHAR STATE POWER TRANSMISSION COMPANY LTD			
DESCRIPTION	132KV D/C TOWER TYPE 'DD' STUB & STUB SETTING TEMPLATE	SCALE	
DRG NO	132KV-D/C-Struct-Stub-Temp-41	SHEET NO	1-1
		REV.	0