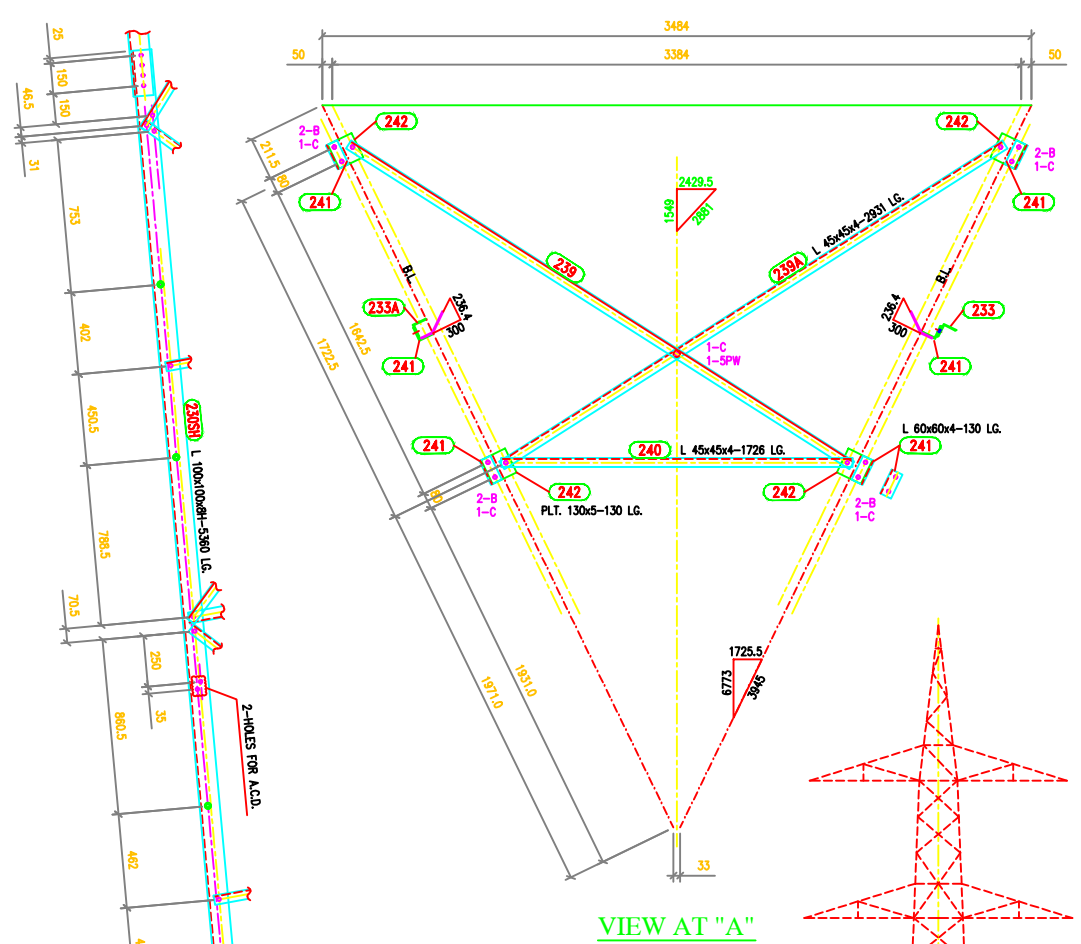
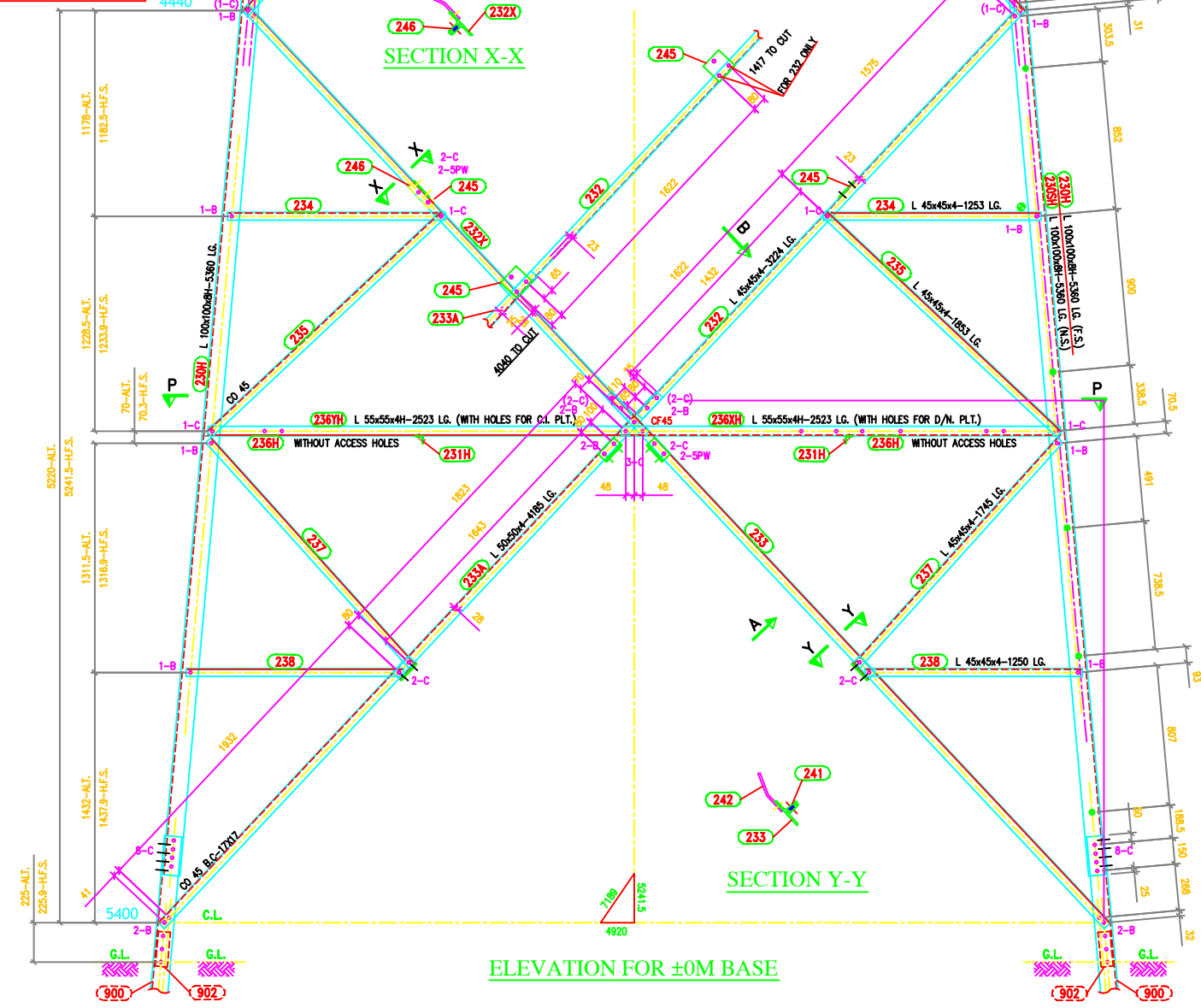
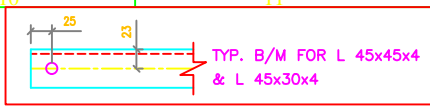


TOWER SLOPE
 Tan B = 0.090682
 2 Tan B = 0.181364
 Face = 1.004112
 Dev = 1.008208

In Face Slopes
 Tan B = 0.090410
 Sec B = 1.004079

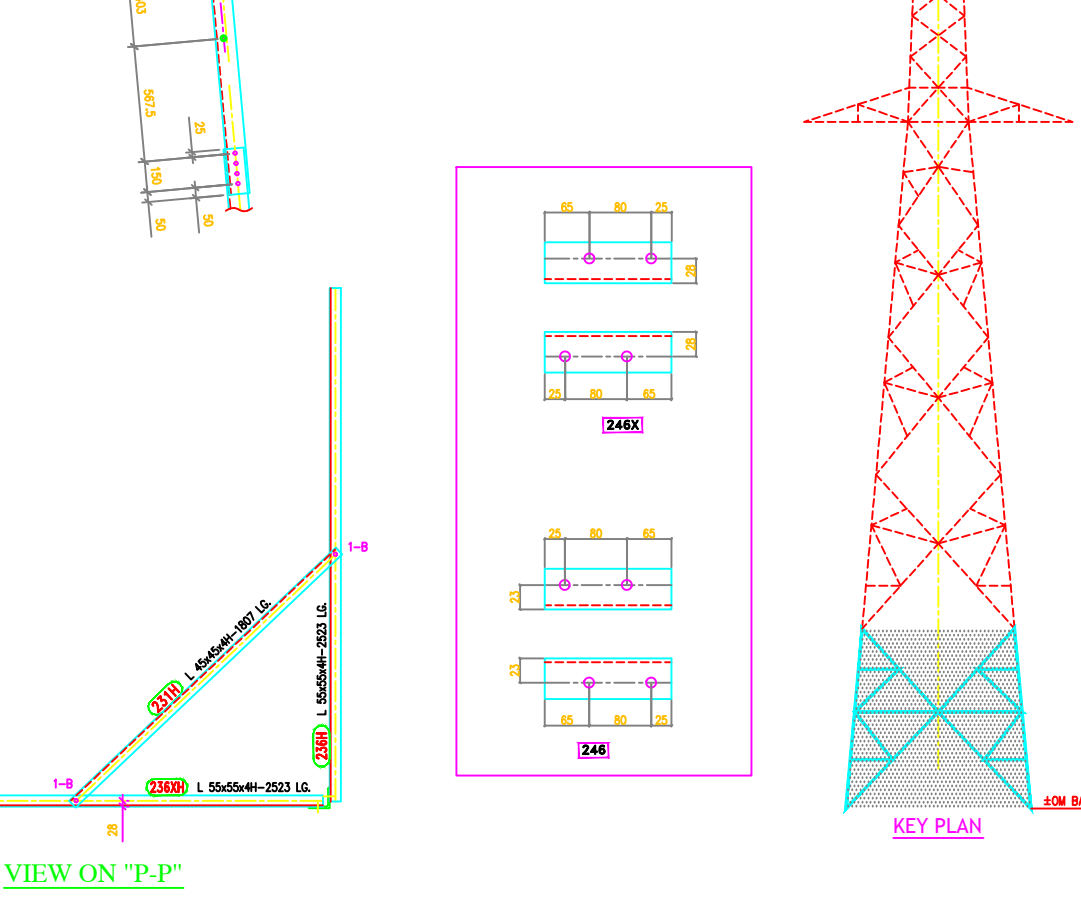
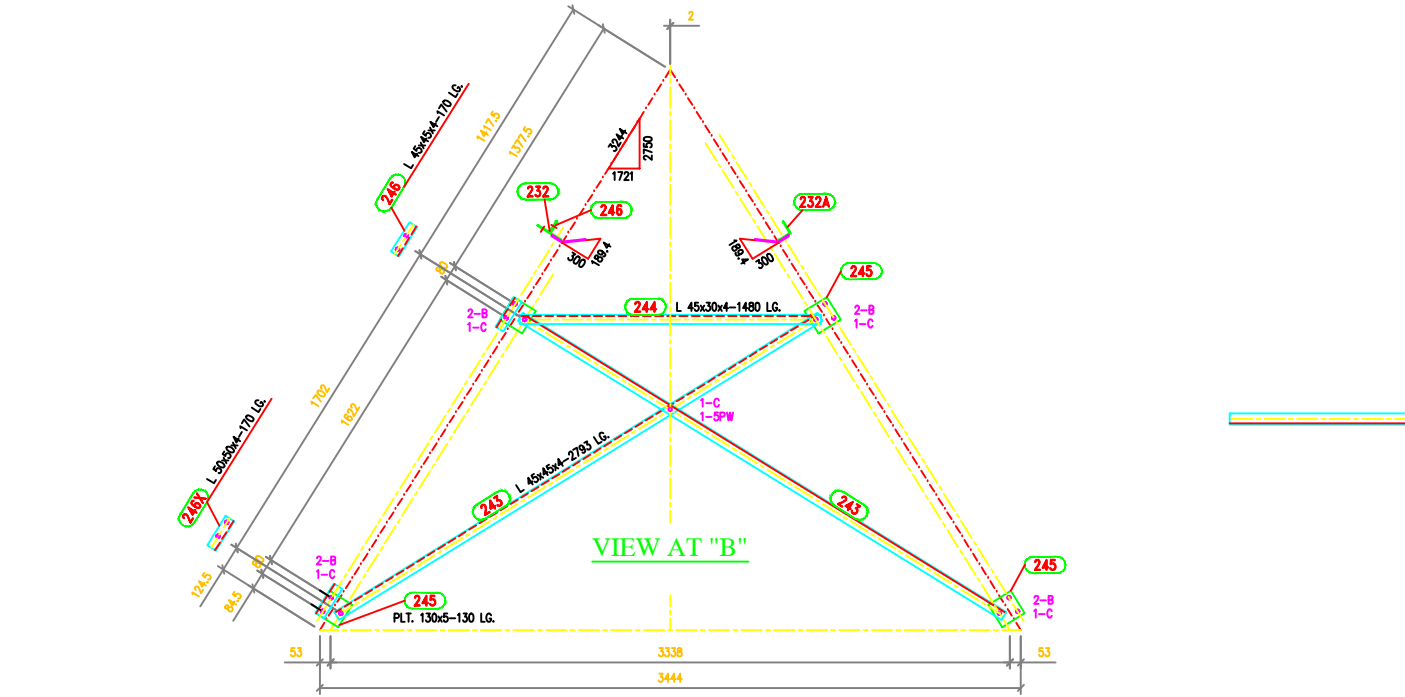


BOLTS AND NUTS STATEMENT:

TYPE	SIZE (IN mm)	QUANTITY		
B	Ø16mm x 35mm	144	-	-
C	Ø16mm x 40mm	132	-	-
D	Ø16mm x 45mm	-	-	-
E	Ø16mm x 50mm	-	-	-
F	Ø16mm x 55mm	-	-	-
G	Ø16mm x 60mm	-	-	-
H	Ø16mm x 65mm	-	-	-
J	Ø16mm x 70mm	-	-	-
K	Ø16mm x 75mm	-	-	-
L	Ø16mm x 80mm	-	-	-
SPRING WASHERS		276	-	-
30 O.D. PACKING WASHERS Ø17.5mm				
	5 mm	24	-	-
	6 mm	-	-	-
	8 mm	12	-	-
	10 mm	-	-	-
STEP BOLTS Ø 16mm x 175mm		10	-	-

- GENERAL NOTES:**
- ALL DIMENSIONS ARE IN MM UNLESS OTHERWISE STATED.
 - MILD STEEL BOLTS & NUTS TO I.S. 6839/12427/4.6/5.6 Q.LTY.
 - ALL MILD STEEL BOLTS & NUTS ARE TO BE HOT DIP GALVANIZED AS PER I.S. 1367 PART-XIII.
 - ALL MILD STEEL BOLTS & NUTS ARE TO BE QUALITY CONFORMING TO I.S. 2082 STANDARD.
 - GALVANISATION OF TOWER MEMBERS AND FLAT WASHERS AS PER I.S. 2629.
 - ALL HOLES Ø13.5 FOR M12 BOLTS U.O.S.
 - ALL HOLES Ø17.5 FOR M16 BOLTS U.O.S.
 - ALL HOLES Ø21.5 FOR M20 BOLTS U.O.S.
 - ALL HOLES Ø17.5 FOR M16 STEP BOLTS U.O.S.
 - STANDARD SPRING WASHERS ARE TO BE USED UNDER EACH NUT.
 - ALL FABRICATED MEMBERS SHALL HAVE THE PREFIX...ZDA
 - FOR SIZE OF BOLTS AND NUTS SEE TABLE OT-100
 - INDICATES MEMBERS BEING USED AS STEP-BOLTS.
 - FOR SEE DRG. NO. S
 - FOR SEE DRG. NO. S
 - FOR SEE DRG. NO. S
 - FOR SEE DRG. NO. S
 - (H) INDICATES HIGH TENSILE STEEL CONFORMING TO BE 4360 GR.-50.8 QUALITY.
 - FOR ACCEPTANCE CRITERIA REFER MANUFACTURING QUALITY PLAN MFG-701.
 - CRITICAL DIMENSIONS ARE SHOWN IN []
 - STEP BOLTS SHALL BE DIAGONALLY OPPOSITE LEGS.

MARK Nos. 230-246



DRAWN BY	DESCRIPTION	220KV D/C TOWER TYPE "2DA" DETAILS OF ±0M BASE	SCALE
CHECKED BY	DRG NO	220KV-D/C-Struct-±0M -Base-12	-
APPROVED BY	SHEET NO 1-1		REV. 0

BIHAR STATE POWER TRANSMISSION COMPANY LTD