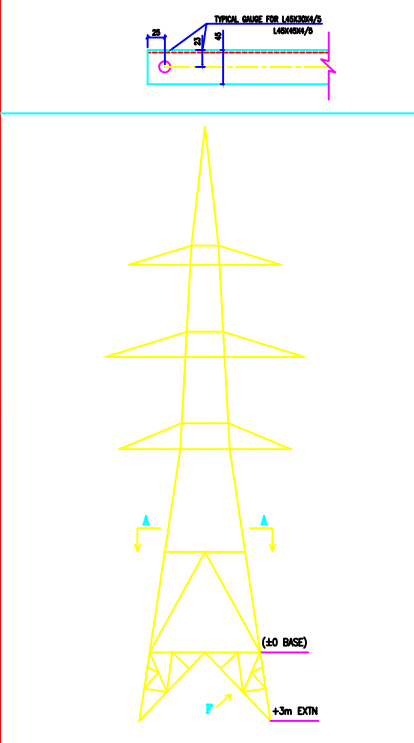
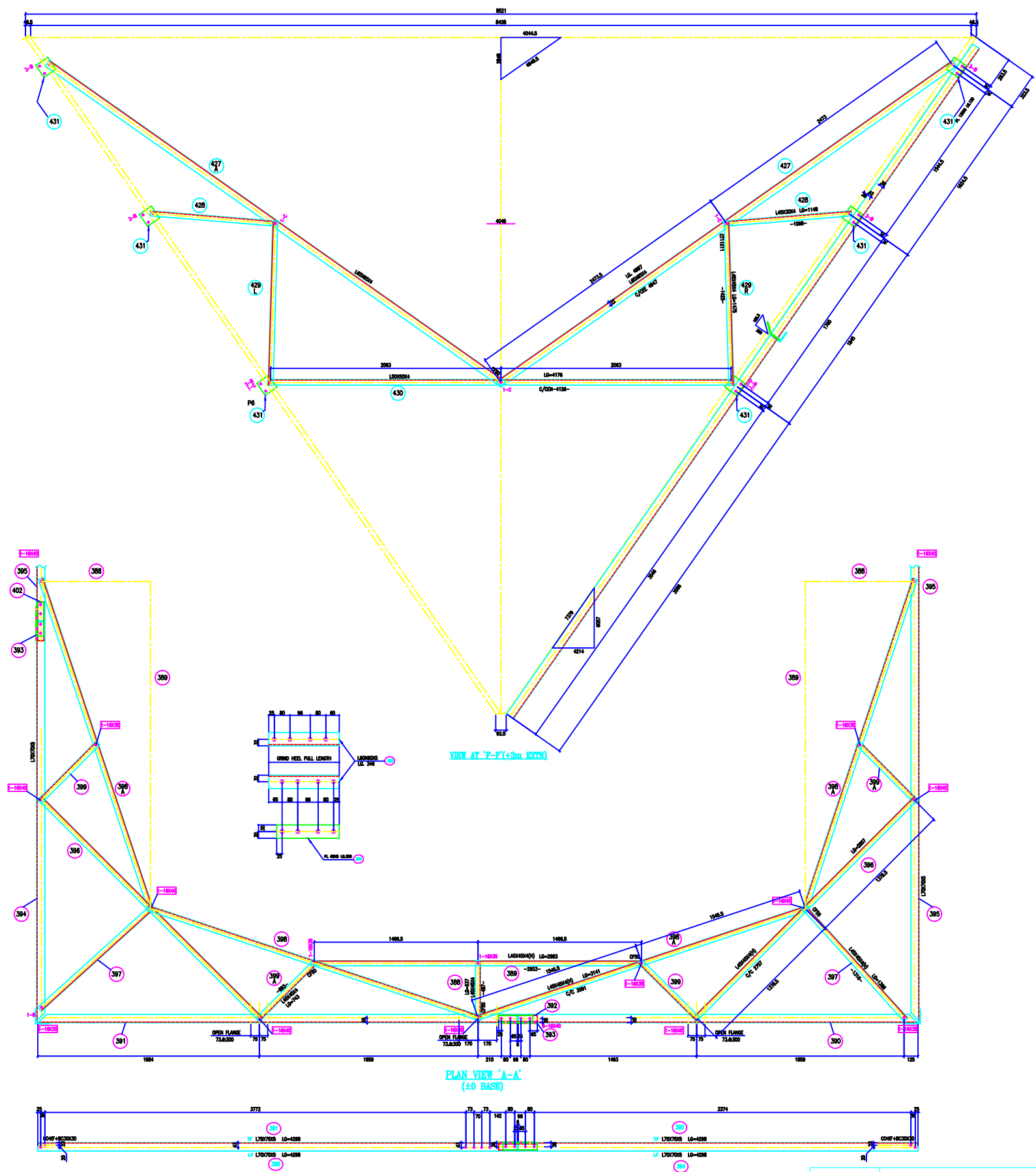


VERTICAL SLICE
 TWR = 0.32050
 ZWR = 0.00212
 FACE = 1.02643
 DEVELOP = 1.02643
 HORIZONTAL SLICE
 TWR = 0.328197
 ZWR = 1.02709



BOLTS AND NUTS STATEMENT

TYPE	SIZE (IN MM)	VIEW F-F	VIEW A-A	QUANTITY
B	# 16X35	64	14	
C	# 16X40	20	48	
D	# 16X45	-	-	
E	# 16X50	-	-	
F	# 16X55	-	-	
G	# 16X60	-	-	
H	# 16X65	-	-	
J	# 16X70	-	-	
K	# 16X75	-	-	
L	# 16X80	-	-	
SPRING WASHERS		84	62	
30 O.D. PACKING WASHERS # 17.5 MM				
5 mm				
6 mm				
8 mm				
10 mm				

- GENERAL NOTES:**
1. ALL DIMENSIONS ARE IN MM UNLESS OTHERWISE SPECIFIED.
 2. HIGH STRENGTH BOLT AND NUTS TO BE USED PER IS 4062/4063.
 3. ALL HIGH STRENGTH BOLT AND NUTS ARE TO BE HOT DIP GALVANIZED AS PER ASTM A153.
 4. ALL HIGH STRENGTH SECTIONS SHALL BE OF TESTED QUALITY CONFORMING TO IS 2002 STANDARD.
 5. GALVANIZATION OF TOWER MEMBERS AND PLAT WASHERS AS PER IS 2002.
 6. ALL HOLES # 12.5mm FOR #10mm BOLTS.
 7. ALL HOLES # 17.5mm FOR #16mm BOLTS.
 8. ALL HOLES # 21.5mm FOR #20mm BOLTS.
 9. ALL HOLES # 25.5mm FOR #25mm BOLTS.
 10. STANDARD SPRING WASHERS ARE TO BE USED UNDER EACH NUT.
 11. ALL FABRICATED MEMBERS SHALL HAVE PROTECTIVE COATING.
 12. CRACKS IN MEMBERS SHALL BE REPAIRED AS PER IS 4062/4063.
 13. STEP BOLTS ARE TO BE PROVIDED ON TWO DIAGONALLY OPP. LEGS.

MARK NO: 300 + 339

BIHAR STATE POWER TRANSMISSION COMPANY LTD

DRAWN BY CHECKED BY APPROVED BY	DESCRIPTION 220KV D/C TOWER TYPE "2DD" (±0 BASE, +3M EXTN) VIEW AT FF & PLAN A-A	SCALE -
DRG NO	220KV-D/C-Struct-±0M-Base- +3M-Extn -49	SHEET NO 1-1 REV. 0