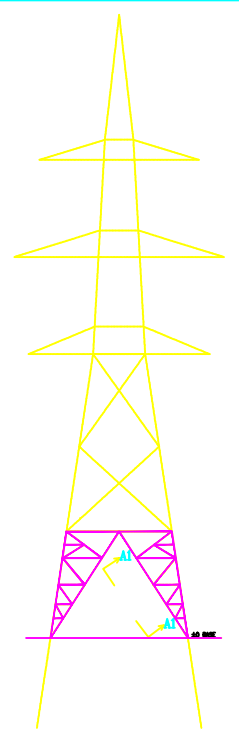
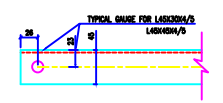
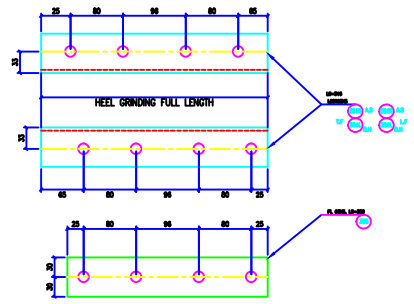
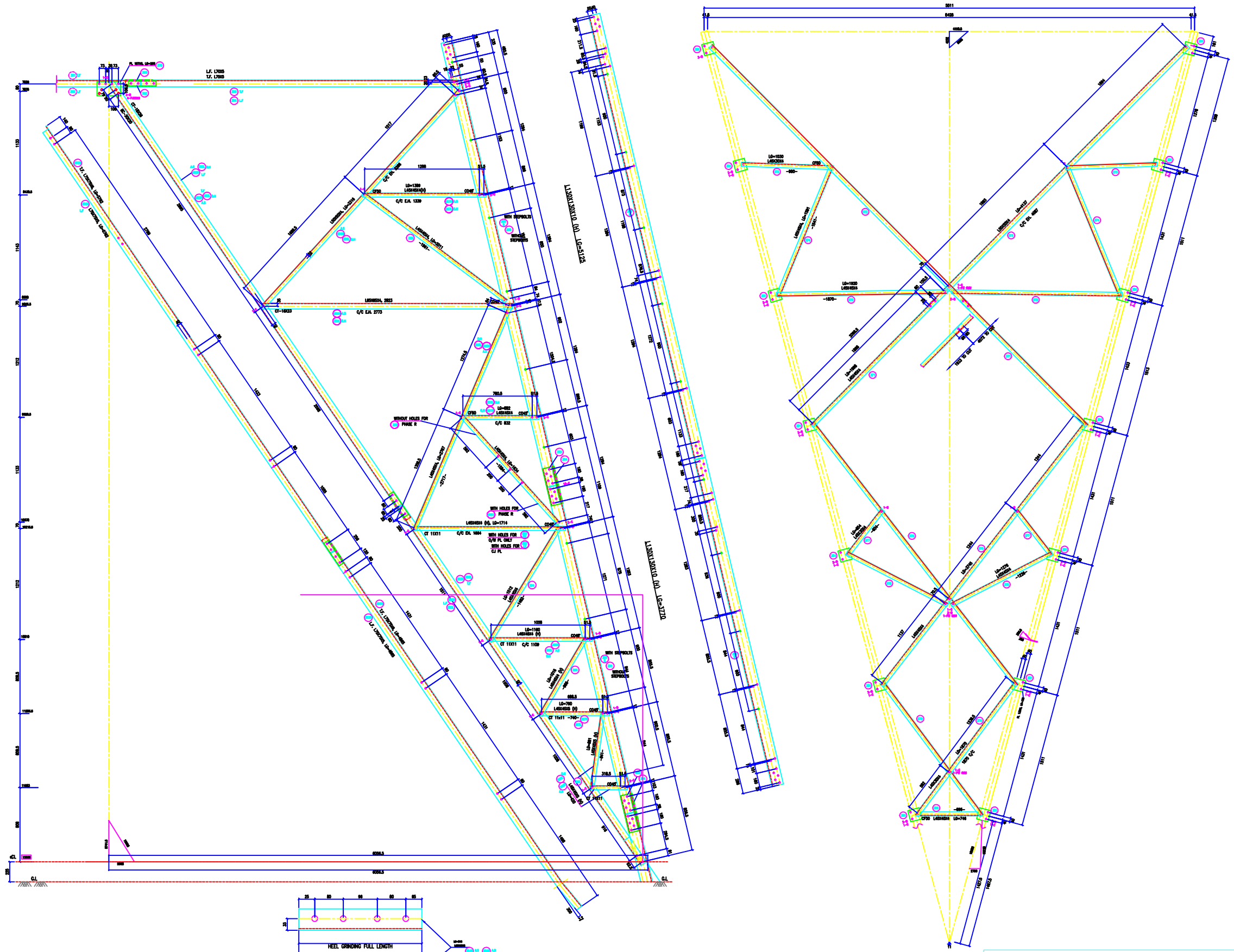


VERTICAL SCALE  
 20M = 0.25000  
 20M = 0.25000  
 FACE = 1.00000  
 DEVELOP = 1.00000  
 HORIZONTAL SCALE  
 20M = 0.25000  
 20M = 0.25000



**BOLTS AND NUTS STATEMENT**

TYPE	SIZE (IN MM)	QUANTITY
B	# 16X35	198
C	# 16X40	340
D	# 16X45	72
E	# 16X50	144
F	# 16X55	-
G	# 16X60	-
H	# 16X65	-
J	# 16X70	-
K	# 16X75	-
L	# 16X80	-
SPRING WASHERS		740
30 O.D PACKING WASHERS # 17.5 MM		
5 mm	-	
6 mm	28	
8 mm	-	
10 mm	-	
STEP BOLTS #16 mm X 175mm		14

**GENERAL NOTES:**

1. ALL DIMENSIONS ARE IN MM UNLESS OTHERWISE SPECIFIED.
2. HIGH STRENGTH BOLT AND NUTS TO BE USED/PLATED/AS SUPPLY.
3. ALL HIGH STRENGTH BOLT AND NUTS ARE TO BE HOT DIP GALVANIZED AS PER ASTM A153.
4. ALL HIGH STRENGTH SECTIONS SHALL BE OF TESTED QUALITY CONFORMING TO IS 2002 STANDARD.
5. GALVANIZATION OF TOWER MEMBERS AND PLAT WASHERS AS PER IS 2002.
6. ALL HOLES # 12.5mm FOR #10mm BOLTS.
7. ALL HOLES # 17.5mm FOR #16mm BOLTS.
8. ALL HOLES # 21.5mm FOR #20mm BOLTS.
9. ALL HOLES # 25.5mm FOR #24mm BOLTS.
10. STANDARD SPRING WASHERS ARE TO BE USED UNDER EACH NUT.
11. ALL FABRICATED MEMBERS SHALL HAVE FINISH.
12. CIRCULATED MEMBERS BEING USED AS STEP BOLTS.
13. STEP BOLTS ARE TO BE PROVIDED ON TWO DIAGONALLY OPP. LEGS.

MARK NO: 350 + 384

**BIHAR STATE POWER TRANSMISSION COMPANY LTD**

DRAWN BY	DESCRIPTION	220KV D/C TOWER TYPE "2DD" DETAIL OF ±0 BASE	SCALE	-
CHECKED BY	DRG NO	220KV-D/C-Struct-±0M -Base-42	SHEET NO	1-1
APPROVED BY			REV.	0