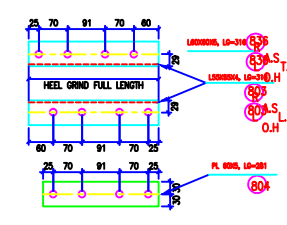
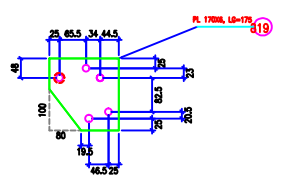
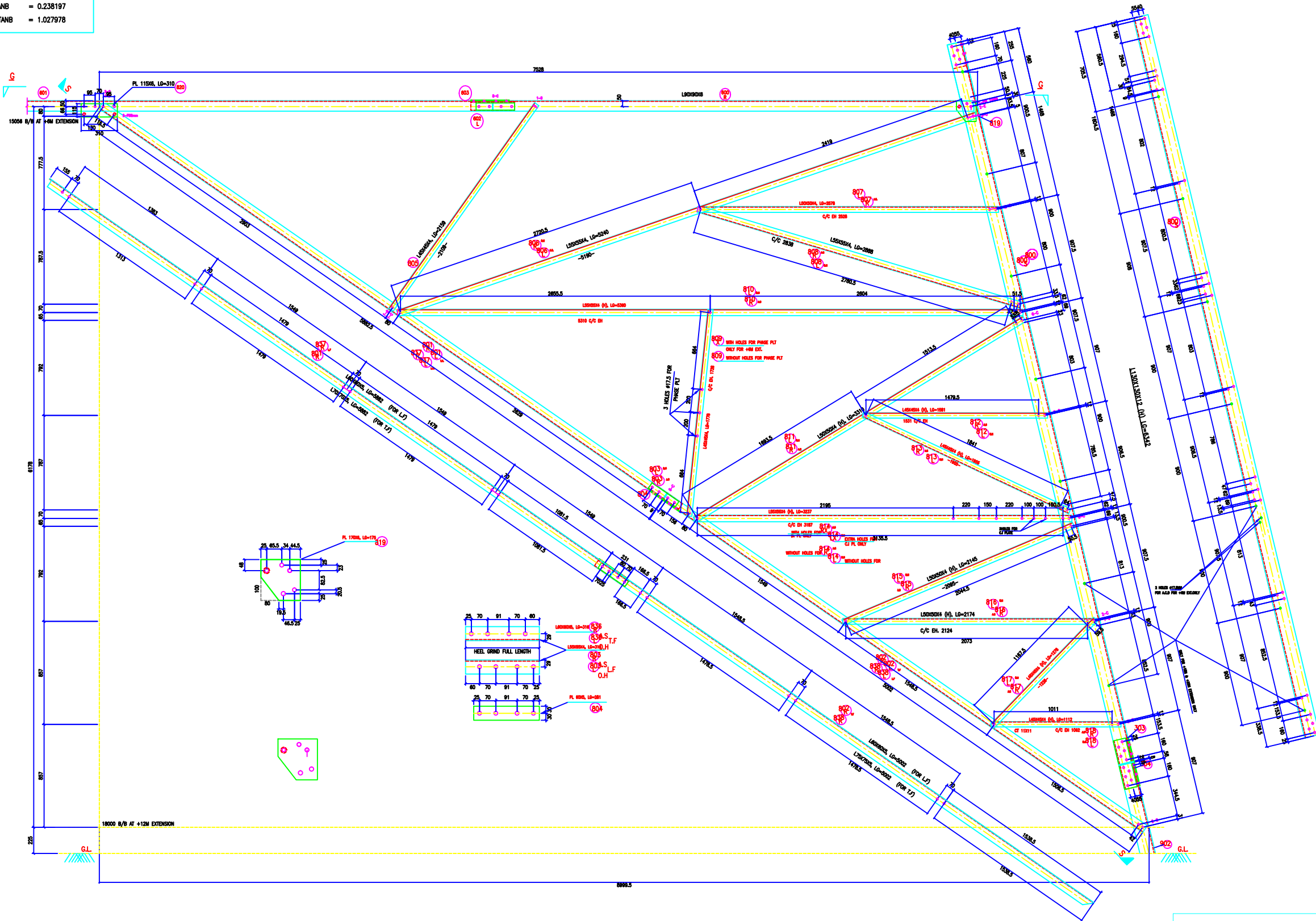
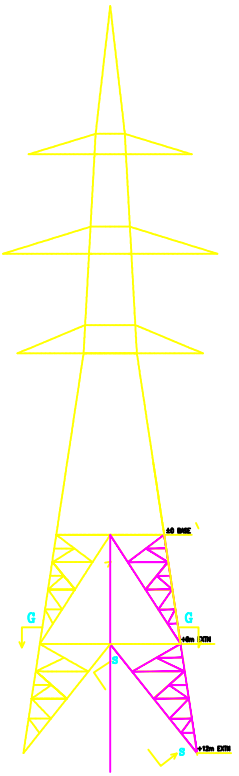
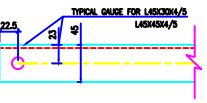


**VERTICAL SLOPE**

TANB = 0.245256  
 2TANB = 0.492512  
 FACE = 1.029639  
 DEVELOP = 1.058443  
**IN FACE SLOPE**  
 TANB = 0.238197  
 2TANB = 1.027978



**BOLTS AND NUTS STATEMENT**

TYPE	SIZE (IN MM)	>12m EXTN	QUANTITY	TOTAL
B	# 18X35	232		232
C	# 18X40	344		344
D	# 18X45	40		40
E	# 18X50	96		96
F	# 18X55	-		-
G	# 18X60	-		-
H	# 18X65	-		-
J	# 18X70	-		-
K	# 18X75	-		-
L	# 18X80	-		-
SPRING WASHERS		712		712
30 O.D PACKING WASHERS # 17.5 MM				
	5 mm	16		16
	6 mm	-		-
	8 mm	-		-
	10 mm	8		8
STEP BOLTS #16 mm X 175mm		15		15

- GENERAL NOTES:**
1. ALL DIMENSIONS ARE IN MM UNLESS OTHERWISE SPECIFIED.
  2. MILD STEEL BOLT AND NUTS TO BS838/12427/5.6 QLT
  3. ALL MILD STEEL BOLT AND NUTS ARE TO BE HOT DIP GALVANISED AS PER ASTM A153
  4. ALL MILD STEEL SECTIONS SHALL BE OF TESTED QUALITY CONFORMING TO IS 2002 STANDARD
  5. GALVANIZATION OF TOWER MEMBERS AND FLAT WASHERS AS PER IS 2002
  6. ALL HOLES # 13.5mm FOR #12mm BOLTS
  7. ALL HOLES # 17.5mm FOR #16mm BOLTS
  8. ALL HOLES # 21.5mm FOR #20mm BOLTS
  9. ALL HOLES # 17.5mm FOR #16mm STEP BOLTS
  10. STANDARD SPRING WASHERS ARE TO BE USED UNDER EACH NUT
  11. ALL FABRICATED MEMBERS SHALL HAVE PROTECTIVE COATING
  12. CORRUGATED MEMBERS BEING USED AS STEP BOLTS
  13. STEP BOLTS ARE TO BE PROVIDED ON TWO DIAGONALLY OPP. LEGS

MARK NO: 800 + 820

**BIHAR STATE POWER TRANSMISSION COMPANY LTD**

DRAWN BY	DESCRIPTION	220KV D/C TOWER TYPE "2DD" +12M BODY EXTN (BOTTOM PART)	SCALE	-
CHECKED BY				
APPROVED BY				
DRG NO	220KV-D/C-Struct-+12M-Extn-Bottom-416	SHEET NO 1-1	REV.	0