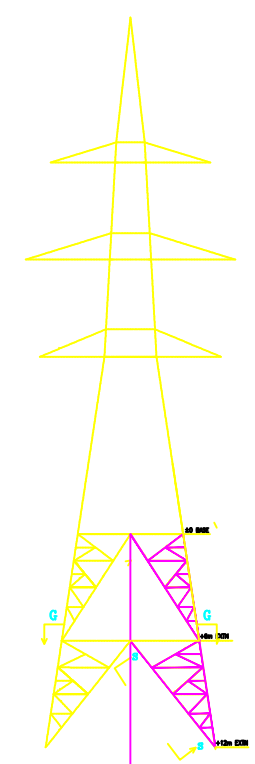
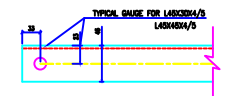
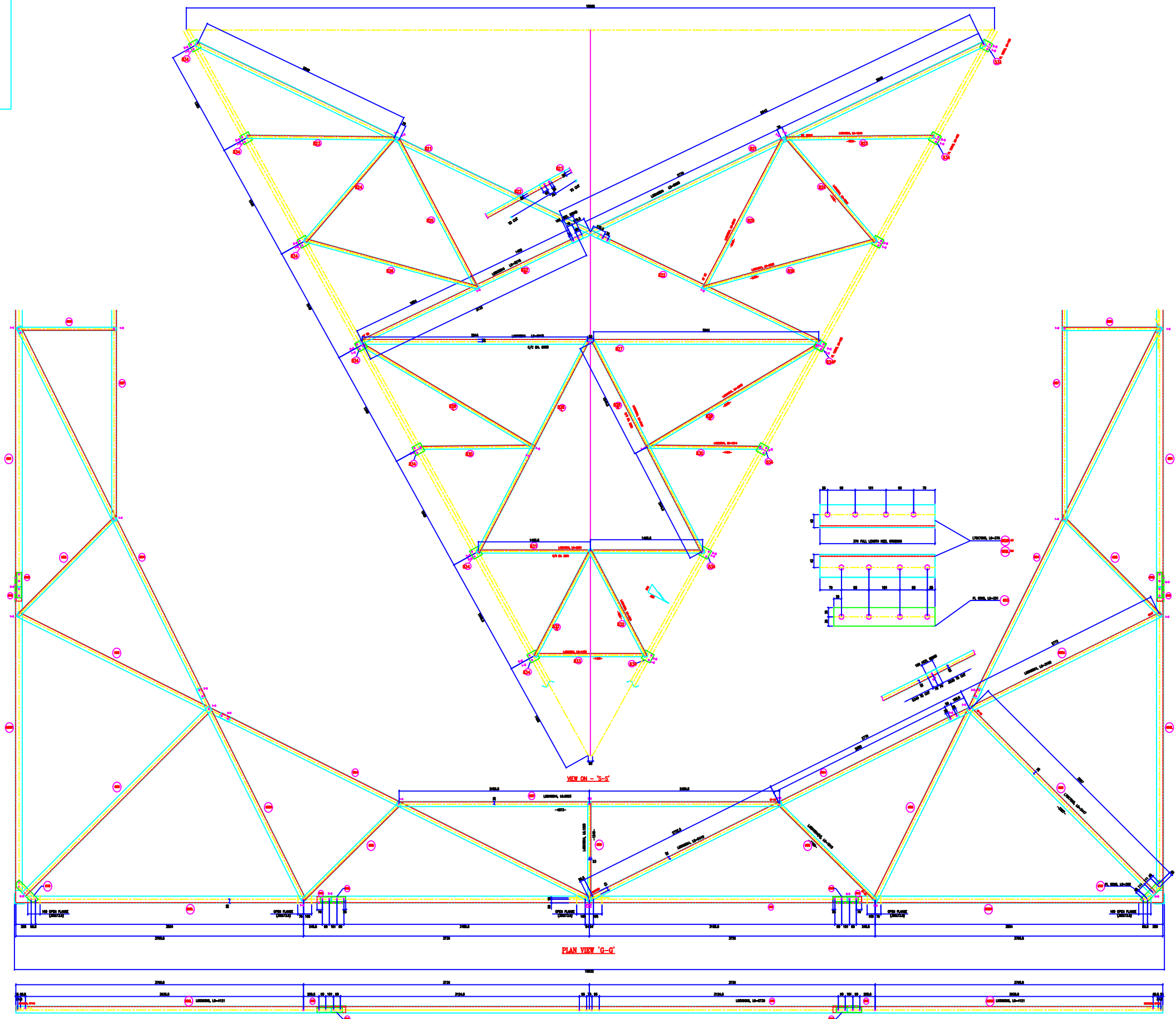


**VERTICAL SLOPE**  
 TANB = 0.245256  
 ZTANB = 0.492512  
 FACE = 1.029639  
 DEVELOP = 1.058443

**IN FACE SLOPE**  
 TANB = 0.238197  
 ZTANB = 1.027978



**BOLTS AND NUTS STATEMENT**

TYPE	SIZE (IN MM)	QUANTITY	TOTAL
B	# 16X35	56	56
C	# 16X40	88	88
D	# 16X45	4	4
E	# 16X50	4	4
F	# 16X55	-	-
G	# 16X60	-	-
H	# 16X65	-	-
J	# 16X70	-	-
K	# 16X75	-	-
L	# 16X80	-	-
SPRING WASHERS		64	64
30 O.D. PACKING WASHERS # 17.5 MM			
	5 mm	4	4
	6 mm	-	-
	8 mm	-	-
	10 mm	-	-
STEP BOLTS #16 mm X 175mm		-	-

**GENERAL NOTES:**

- ALL DIMENSIONS ARE IN MM UNLESS OTHERWISE SPECIFIED.
- MILD STEEL BOLT AND NUTS TO BS4340/12427/5.8 QLT
- ALL MILD STEEL BOLT AND NUTS ARE TO BE HOT DIP GALVANIZED AS PER ASTM A153
- ALL MILD STEEL SECTIONS SHALL BE OF TESTED QUALITY CONFORMING TO IS 2062 STANDARD
- GALVANIZATION OF TOWER MEMBERS AND FLAT WASHERS AS PER IS 2029
- ALL HOLES # 15.5mm FOR #12mm BOLTS
- ALL HOLES # 17.5mm FOR #16mm BOLTS
- ALL HOLES # 21.5mm FOR #20mm BOLTS
- ALL HOLES # 17.5mm FOR #16mm STEP BOLTS
- STANDARD SPRING WASHERS ARE TO BE USED UNDER EACH NUT
- ALL FABRICATED MEMBERS SHALL HAVE PREFIX
- INDICATES MEMBERS BEING USED AS STEP BOLTS
- STEP BOLTS ARE TO BE PROVIDED ON TWO DIAGONALLY OPP. LEGS

MARK NO: 821 + 834 600 + 610, 615 + 624

<b>BIHAR STATE POWER TRANSMISSION COMPANY LTD</b>	
<b>DESCRIPTION</b>	220KV D/C TOWER TYPE "2DD" VIEW "S-S" AND DETAIL OF PLAN VIEW "G-G" (+12M EXTN.)
<b>DRG NO</b>	220KV D/C Struct + 12M-Extn-Plan-417
<b>SHEET NO</b>	1-1
<b>REV.</b>	0

<b>DRAWN BY</b>	
<b>CHECKED BY</b>	
<b>APPROVED BY</b>	