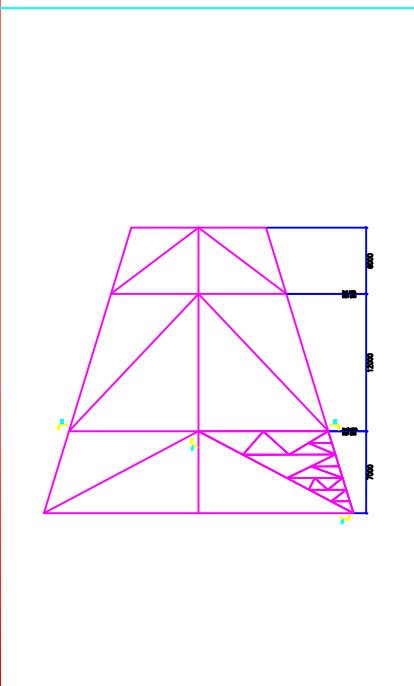
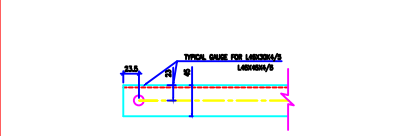
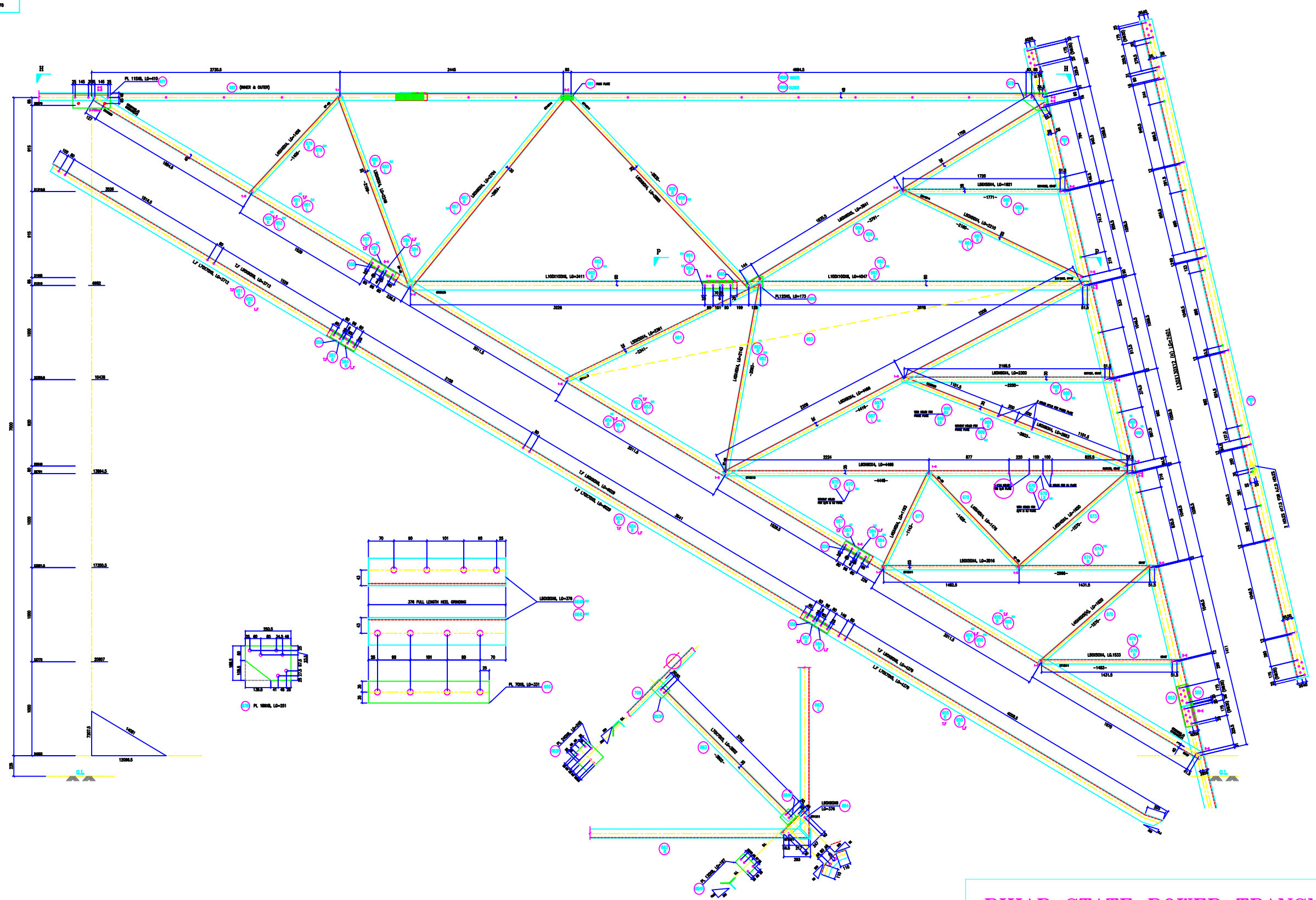


VERTICAL SCALE
 1MM = 0.25000
 2MM = 0.50000
 FACE = 1.00000
 DEVELOP = 1.00000
 HORIZONTAL SCALE
 1MM = 0.328197
 2MM = 0.656395



BOLTS AND NUTS STATEMENT

TYPE	SIZE (IN MM)	QUANTITY
B	# 16X35	32
C	# 16X40	206
D	# 16X45	120
E	# 16X50	176
F	# 16X55	8
G	# 16X60	-
H	# 16X65	-
J	# 16X70	-
K	# 16X75	-
L	# 16X80	-
SPRING WASHERS		624
30 O.D. PACKING WASHERS # 17.5 MM		
	5 mm	8
	6 mm	48
	8 mm	-
	10 mm	-
STEP BOLTS #16 mm X 175mm		17

- GENERAL NOTES:**
1. ALL DIMENSIONS ARE IN MM UNLESS OTHERWISE SPECIFIED.
 2. MILD STEEL BOLT AND NUTS TO IS 4000/4047/4048 ONLY.
 3. ALL MILD STEEL BOLT AND NUTS ARE TO BE HOT DIP GALVANIZED AS PER IS 4000.
 4. ALL MILD STEEL SECTIONS SHALL BE OF TESTED QUALITY CONFORMING TO IS 2002 STANDARD.
 5. MAINTENANCE OF TOWER MEMBERS AND PLAT WASHERS AS PER IS 2002.
 6. ALL HOLES # 15.0mm FOR #16mm BOLTS.
 7. ALL HOLES # 17.5mm FOR #18mm BOLTS.
 8. ALL HOLES # 21.0mm FOR #22mm BOLTS.
 9. ALL HOLES # 17.5mm FOR #18mm STEP BOLTS.
 10. STANDARD SPRING WASHERS ARE TO BE USED UNDER EACH NUT.
 11. ALL FABRICATED MEMBERS SHALL HAVE PROTECTIVE PAINT.
 12. DIMENSIONAL MEMBERS SHALL BE USED AS STEP BOLTS.
 13. STEP BOLTS ARE TO BE PROVIDED ON TWO DIAGONALLY OPP. LEGS.

650 + 684/P, 552, 553, 557, 558, 584

BIHAR STATE POWER TRANSMISSION COMPANY LTD

DRAWN BY		DESCRIPTION	220KV D/C TOWER TYPE "2DD"	SCALE	-
CHECKED BY		DRG NO	220KV-D/C-Struct-+25M-Extn-Bottom -412	SHEET NO 1-1	REV. 0
APPROVED BY		DETAIL OF +25M EXTENSION (BOTTOM PART)			