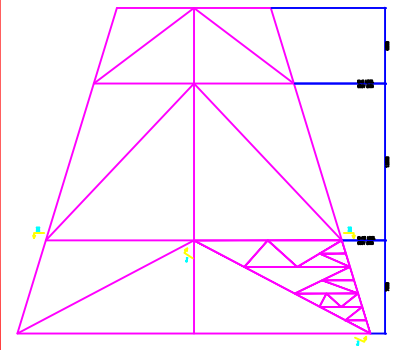
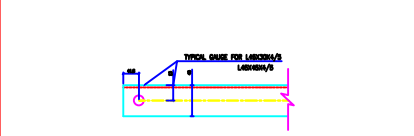
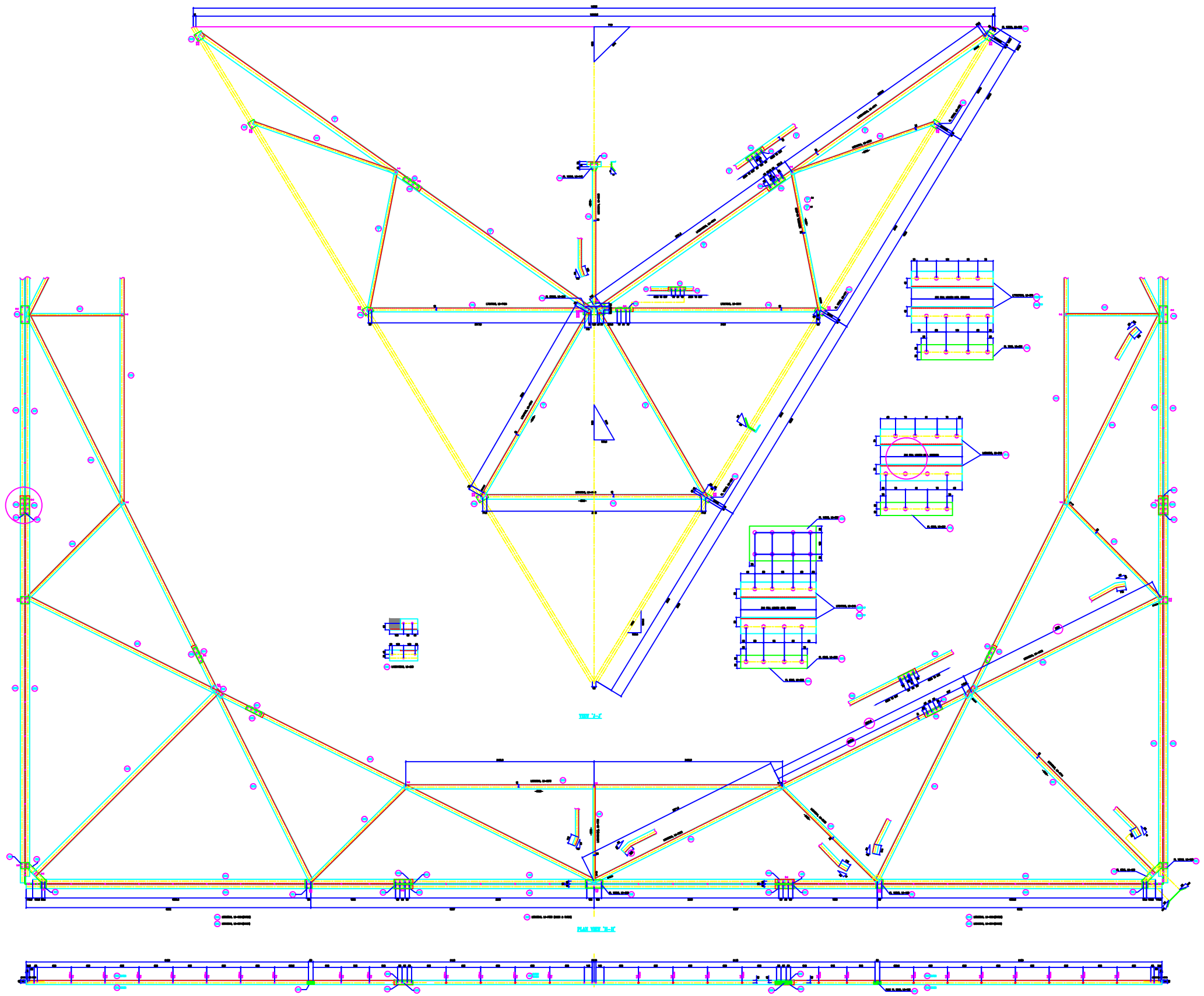


**VERTICAL SCALE**  
 1MM = 0.10000  
 2MM = 0.20000  
 5MM = 0.50000  
 10MM = 1.00000  
**HORIZONTAL SCALE**  
 1MM = 0.328167  
 2MM = 1.07619



**BOLTS AND NUTS STATEMENT**

TYPE	SIZE (IN MM)	QUANTITY
B	Ø 16X30	40
C	Ø 16X40	398
D	Ø 16X45	134
E	Ø 16X50	16
F	Ø 16X55	4
G	Ø 16X60	-
H	Ø 16X65	-
J	Ø 16X70	-
K	Ø 16X75	-
L	Ø 16X80	-
SPRING WASHERS		590
30 O.D. PACKING WASHERS Ø 17.5 MM		
	5 mm	-
	6 mm	8
	8 mm	104
	10 mm	-
STEP BOLTS Ø16 mm X 175mm		-

**GENERAL NOTES:**

1. ALL DIMENSIONS ARE IN MM UNLESS OTHERWISE SPECIFIED.
2. MILD STEEL BOLT AND NUTS TO IS 4026/4027/4028/4029.
3. ALL MILD STEEL BOLT AND NUTS ARE TO BE HOT DIP GALVANIZED AS PER IS 4026.
4. ALL MILD STEEL SECTIONS SHALL BE OF TESTED QUALITY CONFORMING TO IS 2062 STANDARD.
5. MAINTENANCE OF TOWER MEMBERS AND FLAT WASHERS AS PER IS 2062.
6. Ø ALL HOLES Ø 18.0mm FOR Ø16mm BOLTS.
7. Ø ALL HOLES Ø 17.5mm FOR Ø16mm BOLTS.
8. Ø ALL HOLES Ø 21.0mm FOR Ø20mm BOLTS.
9. Ø ALL HOLES Ø 17.5mm FOR Ø16mm STEP BOLTS.
10. STANDARD SPRING WASHERS ARE TO BE USED UNDER EACH NUT.
11. ALL FABRICATED MEMBERS SHALL HAVE PROTECTIVE PAINT.
12. CORRUGATED MEMBERS BEING USED AS STEP BOLTS.
13. STEP BOLTS ARE TO BE PROVIDED ON TWO DIAGONALLY OPP. LEGS.

685 + 722

**BIHAR STATE POWER TRANSMISSION COMPANY LTD**

DRAWN BY CHECKED BY APPROVED BY	<b>DESCRIPTION</b> 220KV D/C TOWER TYPE "2DD" DETAIL OF PLAN VIEW "H-H" & OBLIQUE VIEW "J-J" (+25M EXTN.)	<b>SCALE</b> -
<b>DRG NO</b> 220KV-D/C-Struct-+25M-Extn-Oblique -413	<b>SHEET NO</b> 1-1	<b>REV.</b> 0