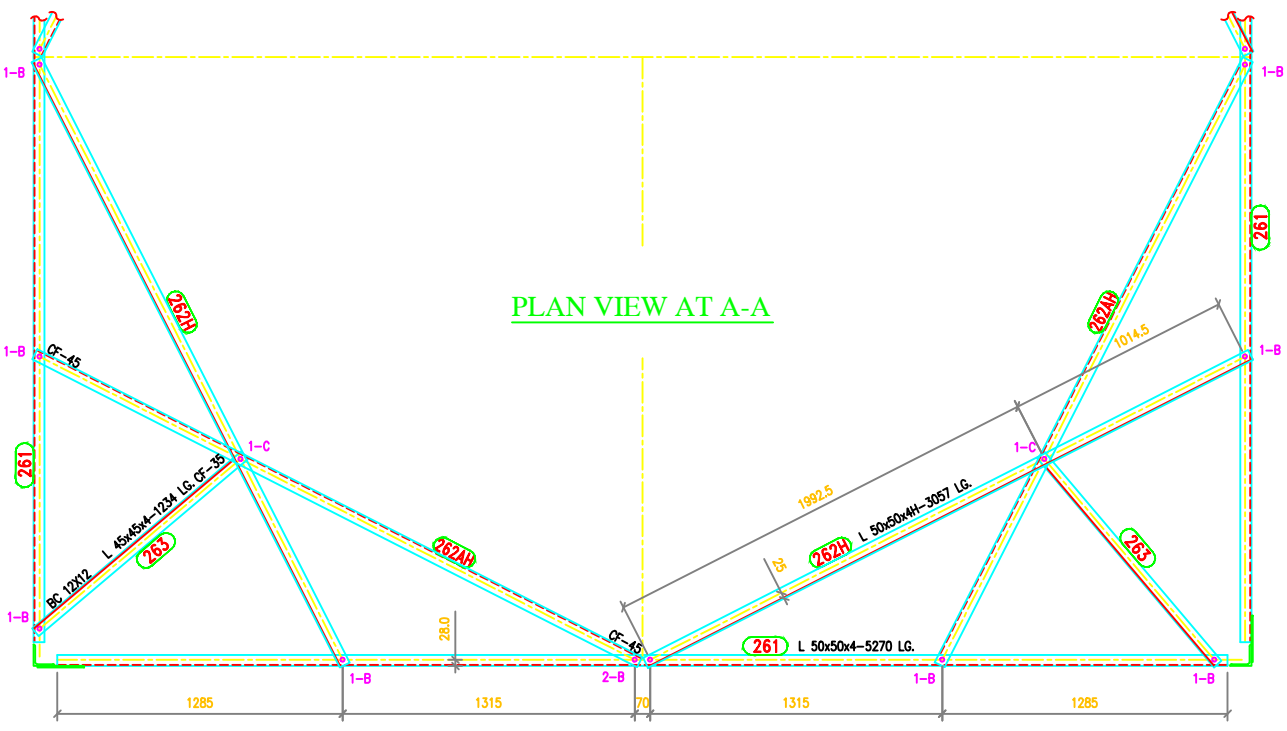


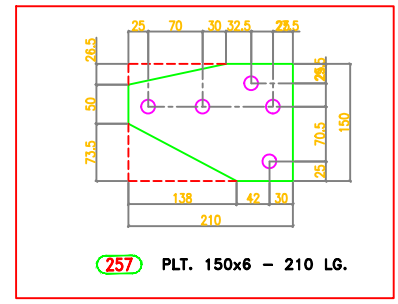
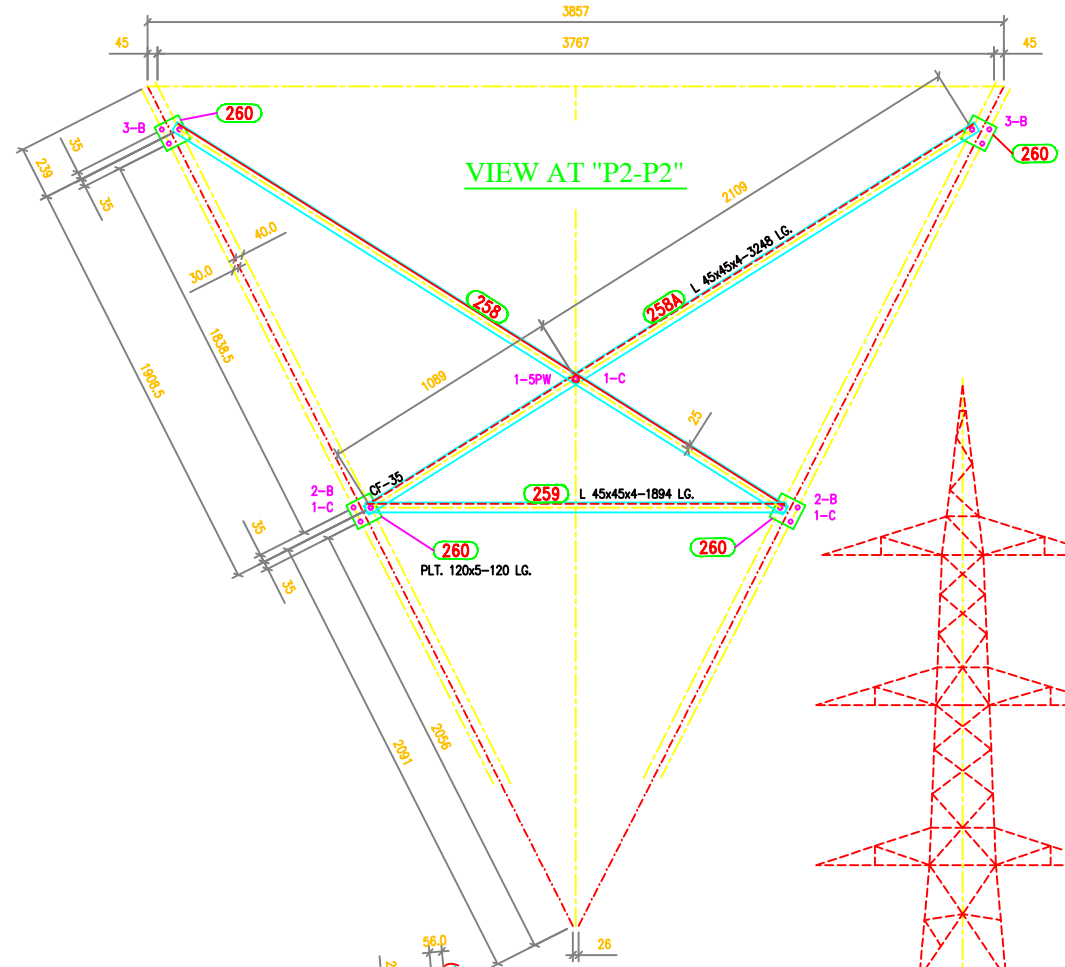
TOWER SLOPE

Tan B	=	0.090682
2 Tan B	=	0.181364
Face	=	1.004112
Dev	=	1.008208
In Face Slopes		
Tan B	=	0.090410
Sec B	=	1.004079

PLAN VIEW AT A-A



VIEW AT "P2-P2"



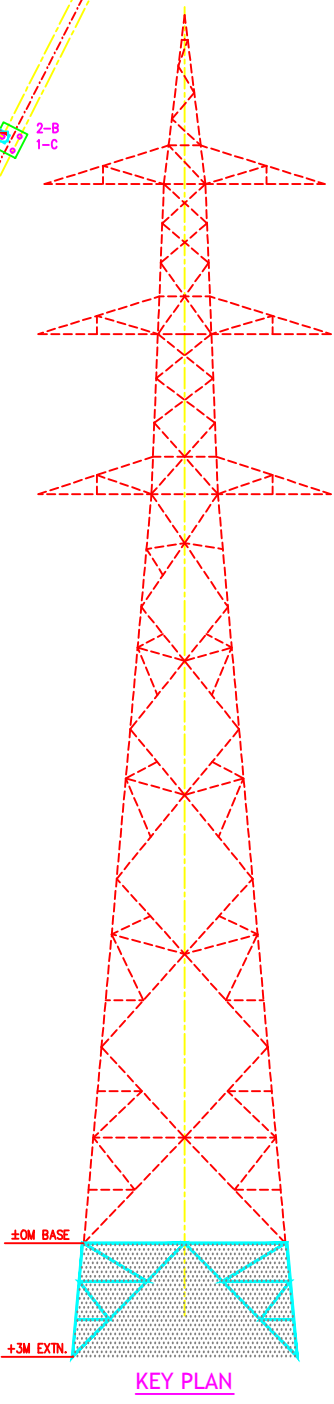
BOLTS AND NUTS STATEMENT:

TYPE	SIZE (IN mm)	QUANTITY		
		+3M	PLAN A-A	TOTAL
B	#16mm x 35mm	92	20	112
C	#16mm x 40mm	68	4	72
D	#16mm x 45mm	24	-	24
E	#16mm x 50mm	-	-	-
F	#16mm x 55mm	-	-	-
G	#16mm x 60mm	-	-	-
H	#16mm x 65mm	-	-	-
J	#16mm x 70mm	-	-	-
K	#16mm x 75mm	-	-	-
L	#16mm x 80mm	-	-	-
SPRING WASHERS		184	24	208
30 O.D. PACKING WASHERS #17.5mm				
5 mm		5	-	5
6 mm		-	-	-
8 mm		-	-	-
10 mm		-	-	-
STEP BOLTS # 16mm x 175mm		6	-	6

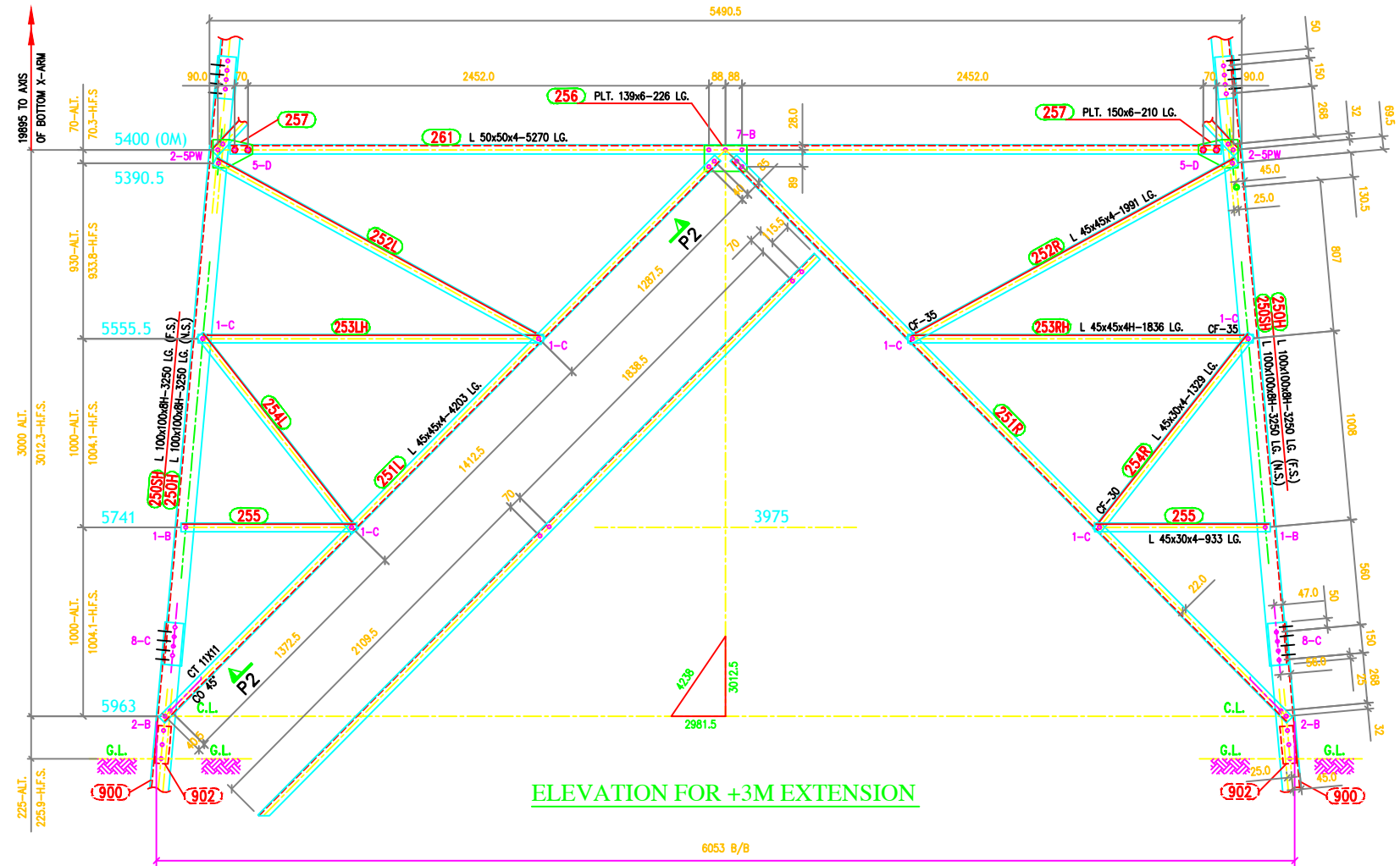
GENERAL NOTES:

- ALL DIMENSIONS ARE IN MM UNLESS OTHERWISE STATED.
- MILD STEEL BOLTS & NUTS TO I.S. 6639/12427/4.6/5.6 QLT.Y.
- ALL MILD STEEL BOLTS & NUTS ARE TO BE HOT DIP GALVANIZED AS PER I.S. 1367 PART-XIII.
- ALL MILD STEEL BOLTS & NUTS ARE TO BE QUALITY CONFORMING TO I.S. 2062 STANDARD.
- GALVANISATION OF TOWER MEMBERS AND FLAT WASHERS AS PER I.S. 2629.
- ALL HOLES #13.5 FOR M12 BOLTS U.O.S.
- ALL HOLES #17.5 FOR M16 BOLTS U.O.S.
- ALL HOLES #21.5 FOR M20 BOLTS U.O.S.
- ALL HOLES #17.5 FOR M16 STEP BOLTS U.O.S.
- STANDARD SPRING WASHERS ARE TO BE USED UNDER EACH NUT.
- ALL FABRICATED MEMBERS SHALL HAVE THE PREFIX...2DA
- FOR SIZE OF BOLTS AND NUTS SEE TABLE OT-100
- INDICATES MEMBERS BEING USED AS STEP-BOLTS.
- FOR SEE DRG. NO. S
- FOR SEE DRG. NO. S
- FOR SEE DRG. NO. S
- FOR SEE DRG. NO. S
- (H) INDICATES HIGH TENSILE STEEL CONFORMING TO BE 4360 GR.-50.8 QUALITY.
- FOR ACCEPTANCE CRITERIA REFER MANUFACTURING QUALITY PLAN MFG-701.
- CRITICAL DIMENSIONS ARE SHOWN IN []
- STEP BOLTS SHALL BE DIAGONALLY OPPOSITE LEGS.

MARK Nos. 250-263



ELEVATION FOR +3M EXTENSION



BIHAR STATE POWER TRANSMISSION COMPANY LTD

DRAWN BY	DESCRIPTION	220KV D/C TOWER TYPE "2DA"		SCALE
CHECKED BY		+3M EXTENSION WITH PLAN VIEW A-A		-
APPROVED BY	DRG NO	220KV-D/C-Struct-±3M-Extn -17	SHEET NO 1-1	REV. 0