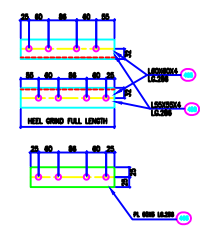
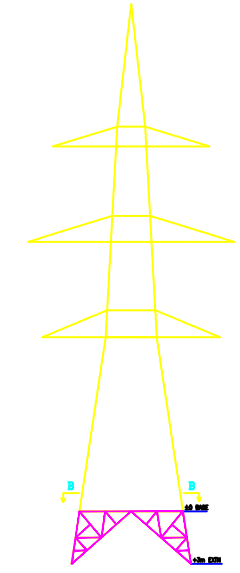
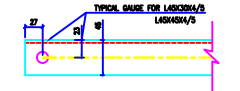
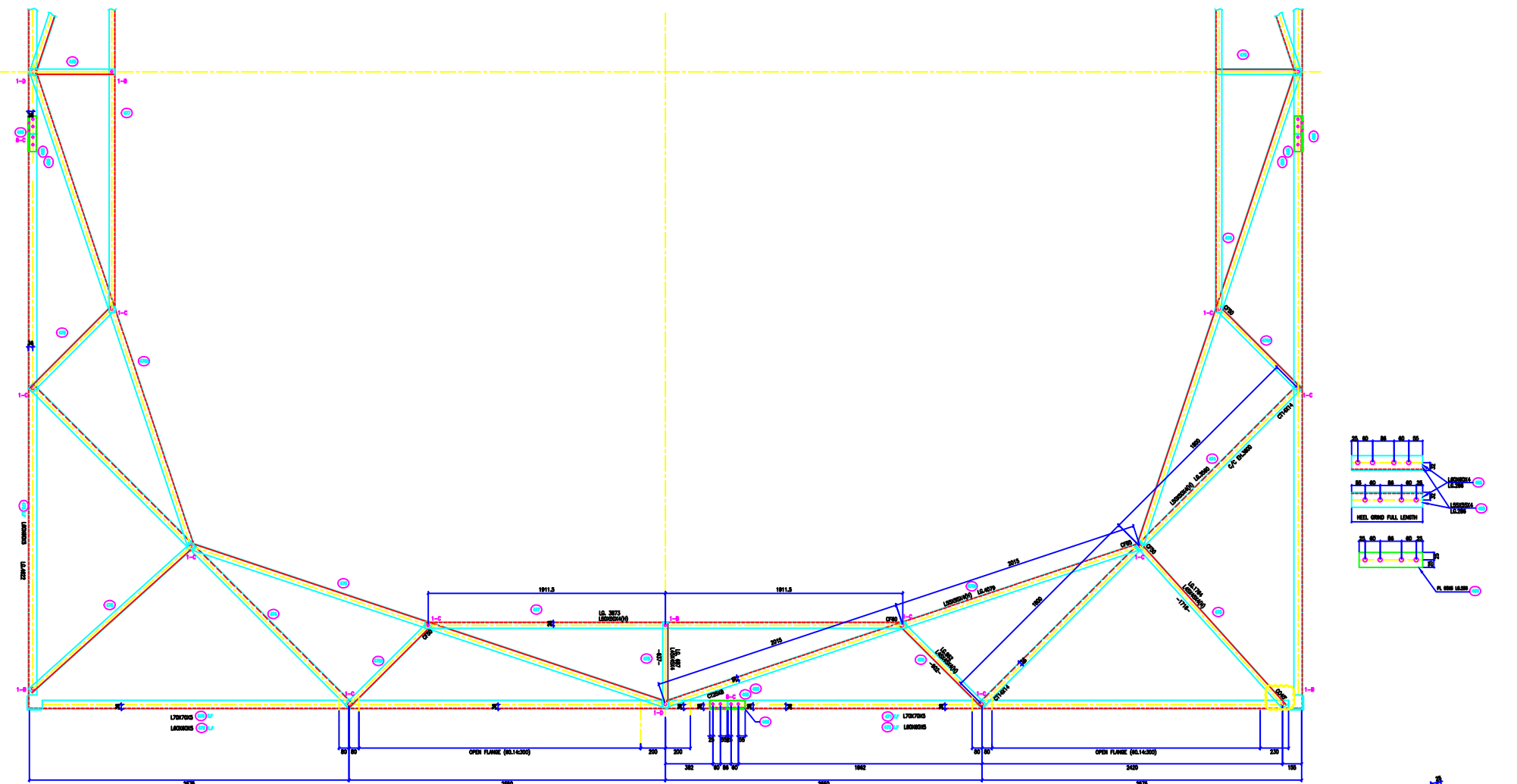


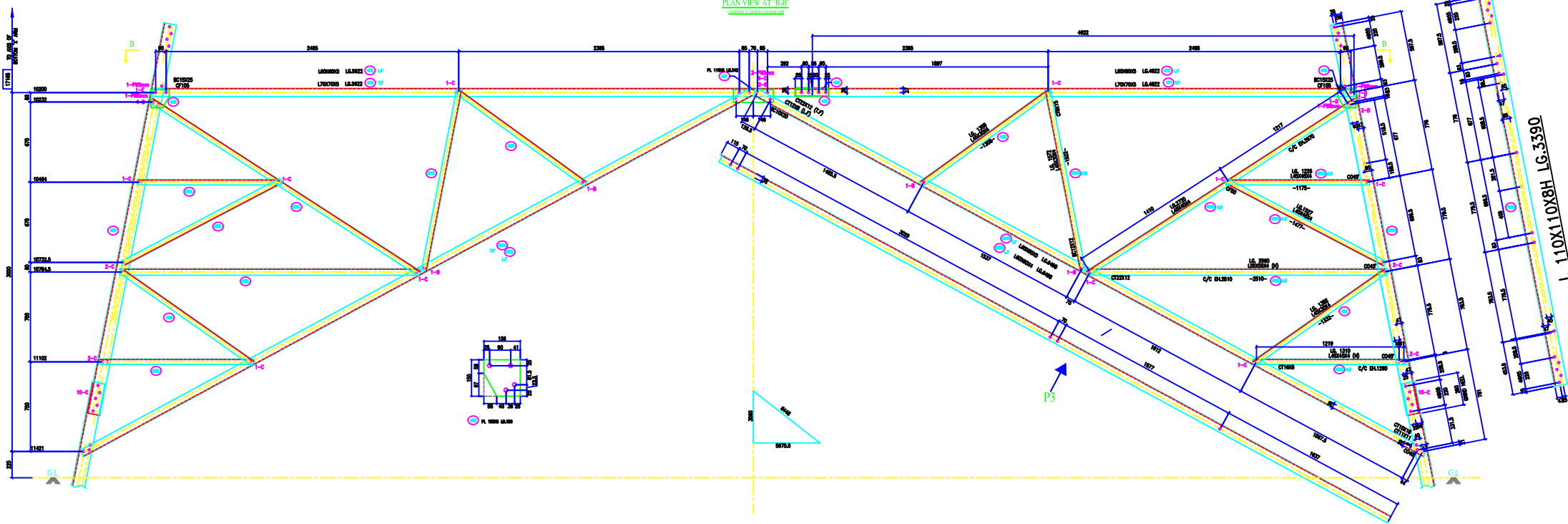
VERTICAL SLOPE	
TW40	= 0.000461
25W40	= 0.000822
FACE	= 1.019406
DEVELOP	= 1.029408
HORIZONTAL SLOPE	
TW40	= 0.194051
25W40	= 1.019133



BOLTS AND NUTS STATEMENT			
TYPE	SIZE (H MM)	+3m EXTN.	PLAN B-B
B	# 16X35	6	6
C	# 16X40	120	S2
D	# 16X45	32	4
E	# 16X50	-	-
F	# 16X55	-	-
G	# 16X60	-	-
H	# 16X65	-	-
J	# 16X70	-	-
K	# 16X75	-	-
L	# 16X80	-	-
SPRING WASHERS		160	64
30 O.D PACKING WASHERS # 17.5 MM			
5 mm		16	
6 mm		-	
8 mm		6	
10 mm		-	
STEP BOLTS #16 mm X 175mm		4	

- GENERAL NOTES:
1. ALL DIMENSIONS ARE IN MM UNLESS OTHERWISE SPECIFIED.
  2. MILD STEEL BOLT AND NUTS TO IS 4026/15437/3.3 QTY
  3. ALL MILD STEEL BOLT AND NUTS ARE TO BE HOT DIP GALVANIZED AS PER ASTM A153
  4. ALL MILD STEEL SECTIONS SHALL BE OF TESTED QUALITY CONFORMING TO IS 8080 STANDARD
  5. GALVANIZATION OF TOWER MEMBERS AND FLAT WASHERS AS PER IS 2629
  6. ALL HOLES # 16.5mm FOR #16mm BOLTS
  7. ALL HOLES # 17.5mm FOR #16mm BOLTS
  8. ALL HOLES # 21.5mm FOR #19mm BOLTS
  9. ALL HOLES # 17.5mm FOR #16mm STEP BOLTS
  10. STANDARD SPRING WASHERS ARE TO BE USED UNDER EACH NUT
  11. ALL FABRICATED MEMBERS SHALL HAVE PROFS
  12. CIRCULATES MEMBERS BEING USED AS STEP BOLTS
  13. STEP BOLTS ARE TO BE PROVIDED ON TWO DIAGONALLY OPP. LEGS

MARK NO: 462, 470 + 480, 465, 466



BIHAR STATE POWER TRANSMISSION COMPANY LTD

DRAWN BY		DESCRIPTION	220KV D/C TOWER TYPE "2DB" +3M EXTN WITH PLAN B-B	SCALE	-
CHECKED BY					
APPROVED BY					
DRG NO	220KV-D/C-Struct-+3M-Extn -29	SHEET NO 1-1	REV.	0	