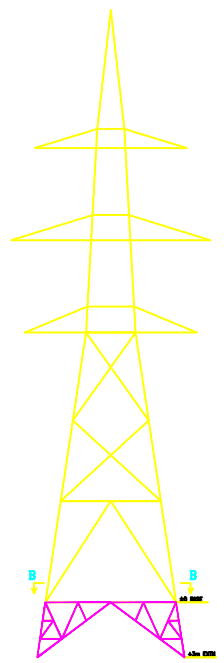
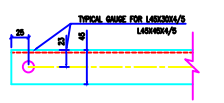
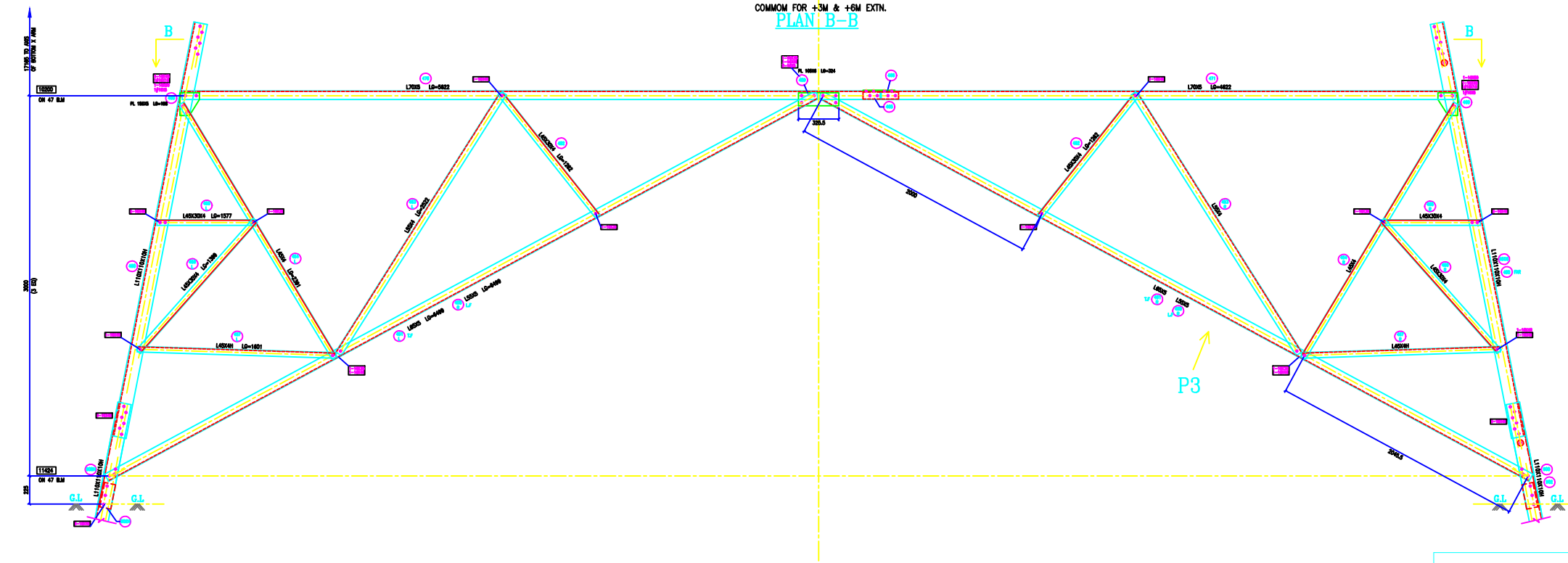
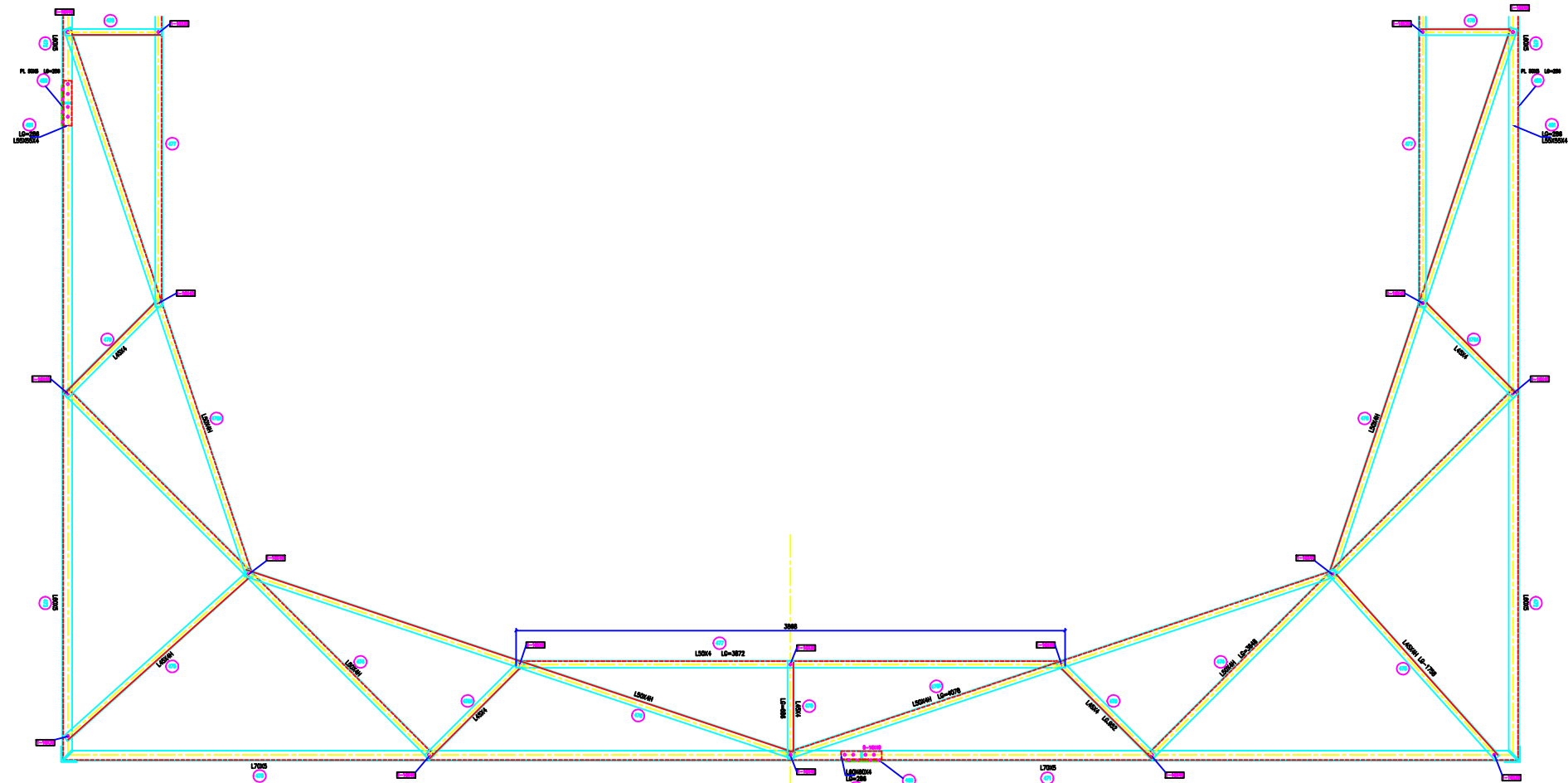


VERTICAL SCALE
 HORIZ = 0.00000
 VERT = 0.0001
 FACE = 1.010003
 DEVELOP = 1.030000
 BLOCK SCALE
 HORIZ = 0.100000
 VERT = 1.010113



BOLTS AND NUTS STATEMENT

TYPE	SIZE (IN MM)	QUANTITY		
		+3m ELEV	VIEW P3	PLAN B-B
B	# 16X35	32	52	8
C	# 16X40	58	8	52
D	# 16X45	86	-	4
E	# 16X50	-	-	-
F	# 16X55	-	-	-
G	# 16X60	-	-	-
H	# 16X65	-	-	-
J	# 16X70	-	-	-
K	# 16X75	-	-	-
L	# 16X80	-	-	-
SPRING WASHERS		176	60	64
30 O.D. PACKING WASHERS # 17.5 MM				
5 mm		8		
6 mm		-		
8 mm		-		
10 mm		6		
STEP BOLTS #16 mm X 175mm		8		

GENERAL NOTES:
 1. ALL DIMENSIONS ARE IN mm UNLESS OTHERWISE SPECIFIED.
 2. MILD STEEL BOLT AND NUTS TO IS8838/12427/5.8 QLT Y
 3. ALL MILD STEEL BOLT AND NUTS ARE TO BE HOT DIP GALVANISED AS PER ASTM A153
 4. ALL MILD STEEL SECTIONS SHALL BE OF TESTED QUALITY CONFORMING TO IS 2062 STANDARD
 5. GALVANIZATION OF TOWER MEMBERS AND FLAT WASHERS AS PER IS 2829
 6. ALL HOLES # 13.5mm FOR #12mm BOLTS
 7. ALL HOLES # 17.5mm FOR #16mm BOLTS
 8. ALL HOLES # 21.5mm FOR #20mm BOLTS
 9. ALL HOLES # 17.5mm FOR #18mm STEP BOLTS
 10. STANDARD SPRING WASHERS ARE TO BE USED UNDER EACH NUT
 11. ALL FABRICATED MEMBERS SHALL HAVE PROTECTIVE
 12. CORNUCATES MEMBERS BEING USED AS STEP BOLTS.
 13. STEP BOLTS ARE TO BE PROVIDED ON TWO DIAGONALLY OPP. LESS

MARK NO: 450 + 466 & 470 + 481

BIHAR STATE POWER TRANSMISSION COMPANY LTD

DRAWN BY		DESCRIPTION	220KV D/C TOWER TYPE "2DC"		SCALE
CHECKED BY			DETAIL OF +3Mtr EXTN WITH PLAN B-B		-
APPROVED BY		DRG NO	220KV-D/C-Struct-+3M-Extn -38	SHEET NO 1-1	REV. 0