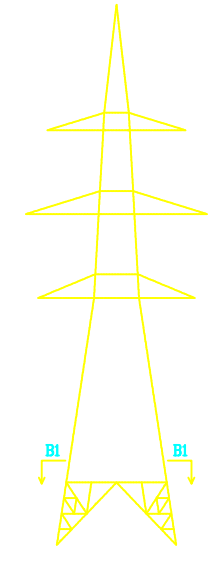
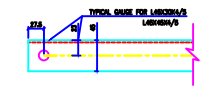
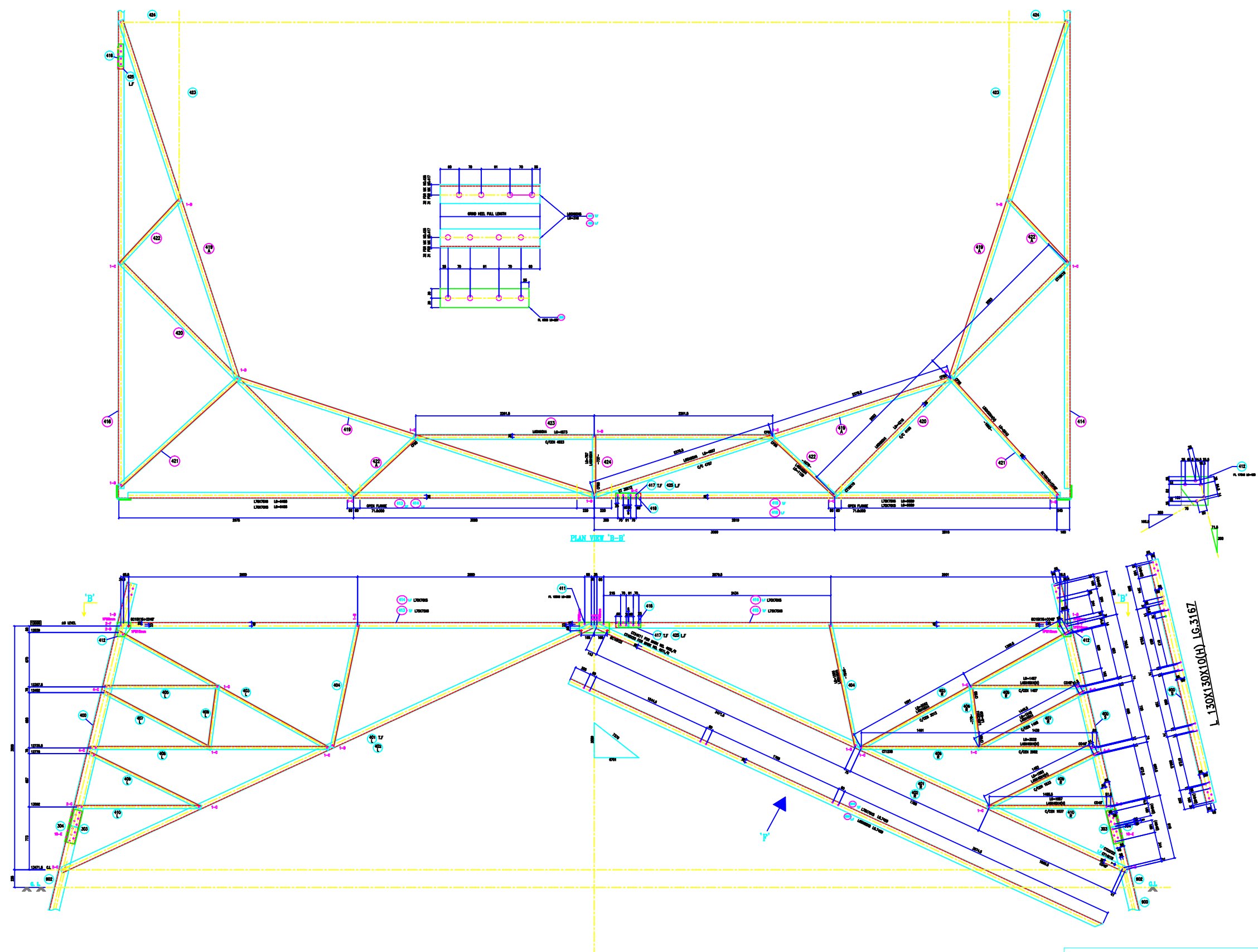


VERTICAL SCALE
 1MM = 0.10000
 2MM = 0.00012
 FACE = 1.00000
 DEVELOP = 1.00000
 HORIZONTAL SCALE
 1MM = 0.328167
 2MM = 1.02770



BOLTS AND NUTS STATEMENT

TYPE	SIZE (IN MM)	QUANTITY		
		+3m	PLAN B-B	TOTAL
B	φ 16X30	16	10	26
C	φ 16X40	120	44	164
D	φ 16X45	44	4	48
E	φ 16X50	80	-	80
F	φ 16X55	16	-	16
G	φ 16X60	-	-	-
H	φ 16X65	-	-	-
J	φ 16X70	-	-	-
K	φ 16X75	-	-	-
L	φ 16X80	-	-	-
SPRING WASHERS		276	58	334
30 O.D PADDING WASHERS φ 17.5 MM				
	5 mm			
	6 mm			16
	8 mm			8
	10 mm			8
STEP BOLTS φ16 mm X 175mm				9

GENERAL NOTES:

1. ALL DIMENSIONS ARE IN MM UNLESS OTHERWISE SPECIFIED.
2. MILD STEEL BOLT AND NUTS TO IS 4026/4027/4047/4048/4049.
3. ALL MILD STEEL BOLT AND NUTS ARE TO BE HOT DIP GALVANIZED AS PER IS 4026.
4. ALL MILD STEEL SECTIONS SHALL BE OF TESTED QUALITY CONFORMING TO IS 2002 STANDARD.
5. MAINTENANCE OF TOWER MEMBERS AND FLAT WASHERS AS PER IS 2002.
6. φ ALL HOLES φ 18.0mm FOR φ16mm BOLTS.
7. φ ALL HOLES φ 17.5mm FOR φ16mm BOLTS.
8. φ ALL HOLES φ 21.0mm FOR φ20mm BOLTS.
9. φ ALL HOLES φ 17.5mm FOR φ16mm STEP BOLTS.
10. STANDARD SPRING WASHERS ARE TO BE USED UNDER EACH NUT.
11. ALL FABRICATED MEMBERS SHALL HAVE PROTECTIVE PAINT.
12. FABRICATED MEMBERS BEING USED AS STEP BOLTS.
13. STEP BOLTS ARE TO BE PROVIDED ON TWO DIAGONALLY OPP. LEGS.

MARK NO: 400 + 425, 303, 304

BIHAR STATE POWER TRANSMISSION COMPANY LTD

DRAWN BY		DESCRIPTION	220KV D/C TOWER TYPE "2DD" DETAIL OF +3M EXTN WITH PLAN VIEW "B-B"	SCALE	-
CHECKED BY		DRG NO	220KV-D/C-Struct-+3M-Extn -48	SHEET NO	1-1
APPROVED BY				REV.	0