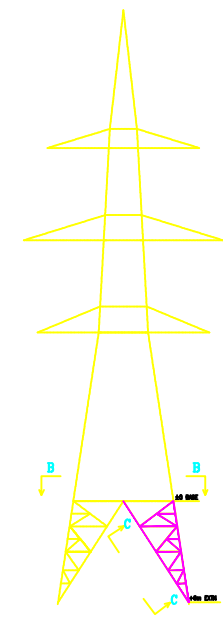
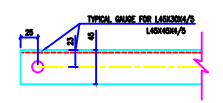
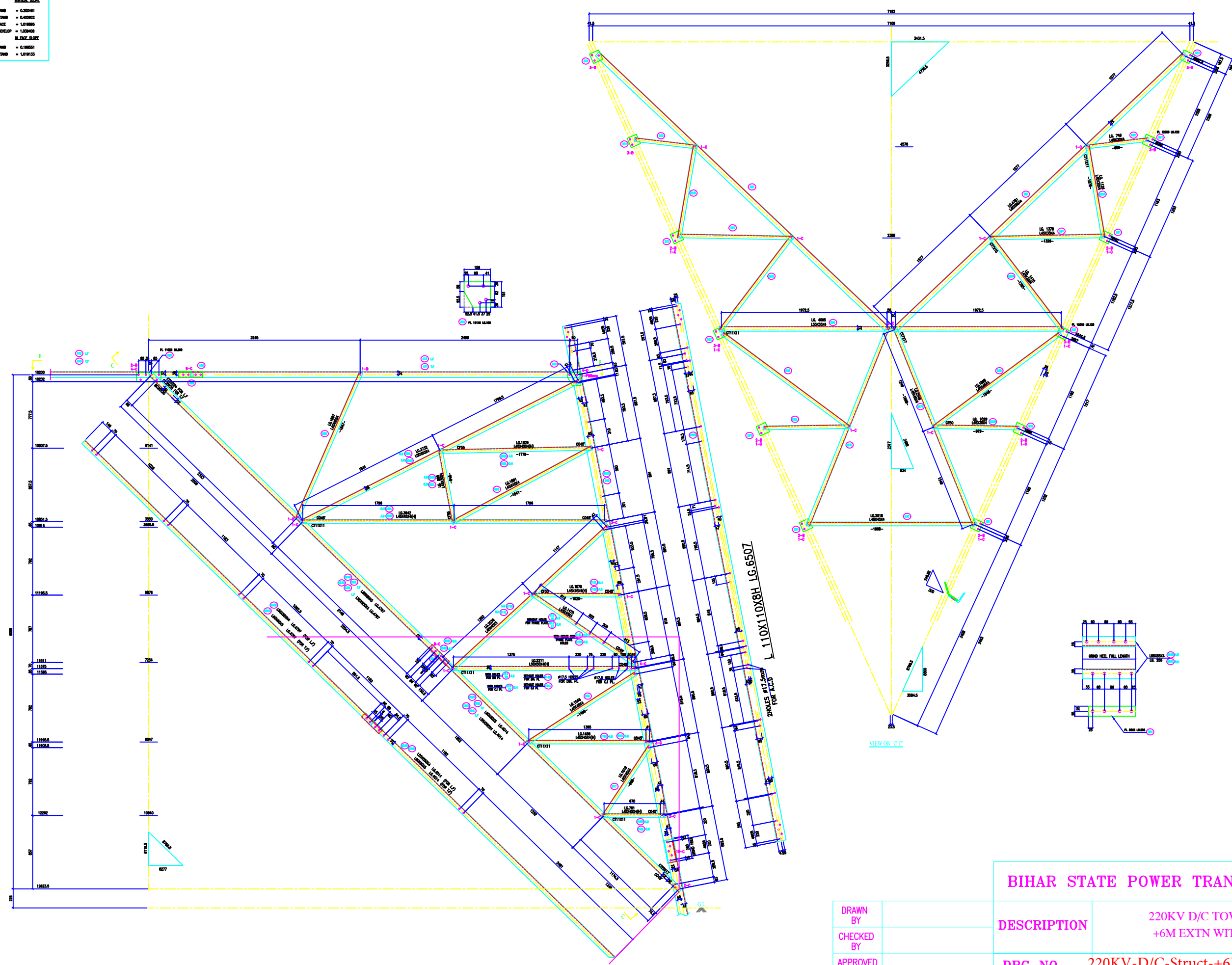


VERTICAL SCALE

THD	= 0.00001
ZHDD	= 0.00002
FACE	= 0.00000
DEVELOP	= 0.00000
HORIZONTAL SCALE	
THD	= 0.00001
ZHDD	= 0.00002



BOLTS AND NUTS STATEMENT

TYPE	SIZE (IN MM)	+6m EXTN	PLAN VIEW	TOTAL
B	# 16X35	148	8	156
C	# 16X40	336	52	388
D	# 16X45	32	4	36
E	# 16X50	-	-	-
F	# 16X55	-	-	-
G	# 16X60	-	-	-
H	# 16X65	-	-	-
J	# 16X70	-	-	-
K	# 16X75	-	-	-
L	# 16X80	-	-	-
SPRING WASHERS		516	64	580
30 O.D. PACKING WASHERS # 17.5 MM				
5 mm		10		
6 mm		-		
8 mm		8		
10 mm		-		
STEP BOLTS #16 mm X 175mm		8		

- GENERAL NOTES:**
1. ALL DIMENSIONS ARE IN MM UNLESS OTHERWISE SPECIFIED.
 2. HIGH STRENGTH BOLT AND NUTS TO BE USED PER IS 4000/4002/4003.
 3. ALL HIGH STRENGTH BOLT AND NUTS ARE TO BE HOT DIP GALVANIZED AS PER ASTM A193.
 4. ALL HIGH STRENGTH SECTIONS SHALL BE OF TESTED QUALITY CONFORMING TO IS 2002 STANDARD.
 5. GALVANIZATION OF TOWER MEMBERS AND PLAT WASHERS AS PER IS 2002.
 6. ALL HOLES # 12.5mm FOR #10mm BOLTS.
 7. ALL HOLES # 17.5mm FOR #16mm BOLTS.
 8. ALL HOLES # 21.5mm FOR #20mm BOLTS.
 9. ALL HOLES # 25.5mm FOR #24mm BOLTS.
 10. STANDARD SPRING WASHERS ARE TO BE USED UNDER EACH NUT.
 11. ALL FABRICATED MEMBERS SHALL HAVE PROTECTIVE COATING.
 12. DIMENSIONS MEMBER BEING USED AS STEP BOLTS.
 13. STEP BOLTS ARE TO BE PROVIDED ON TWO DIAGONALLY OPP. LEGS.

MARK NO: 500 + 534

BIHAR STATE POWER TRANSMISSION COMPANY LTD

DRAWN BY		DESCRIPTION	220KV D/C TOWER TYPE "2DB" +6M EXTN WITH VIEW C-C	SCALE	-
CHECKED BY		DRG NO	220KV-D/C-Struct-+6M-Extn -210	SHEET NO	1-1
APPROVED BY				REV.	0