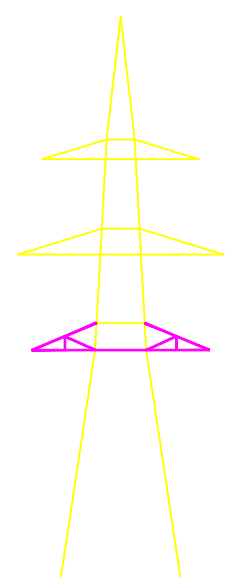
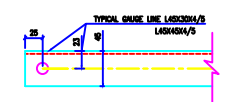
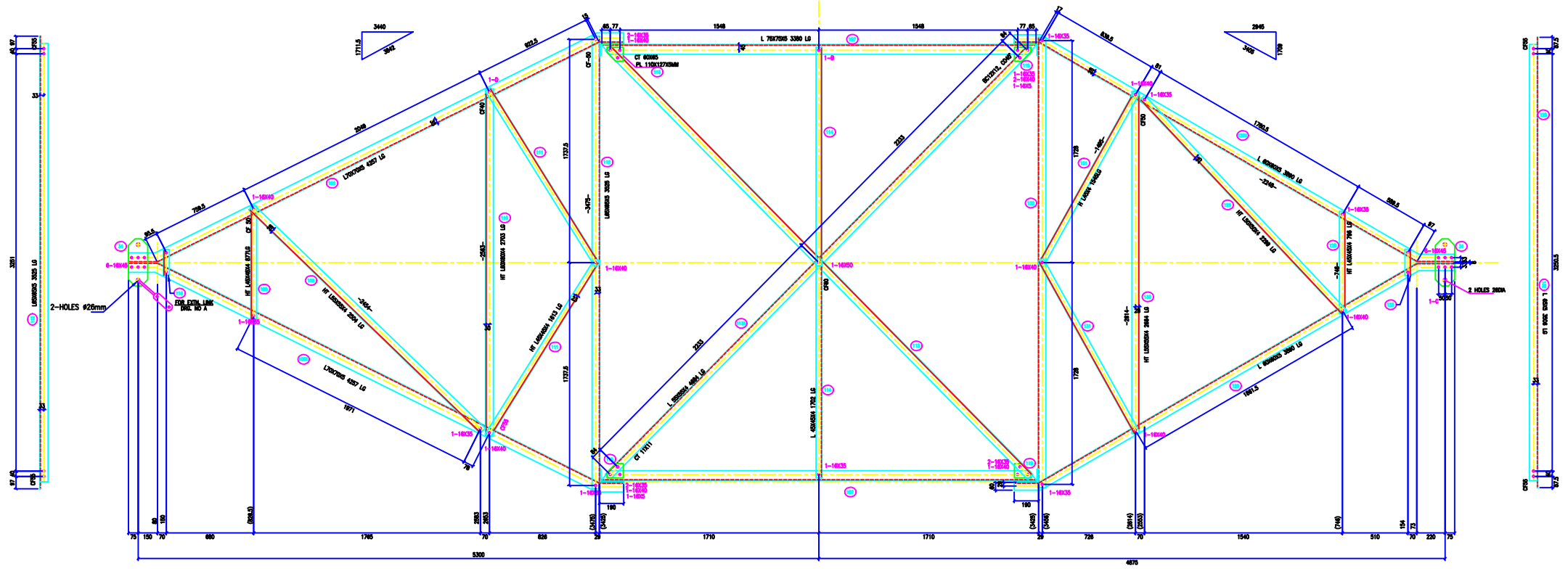
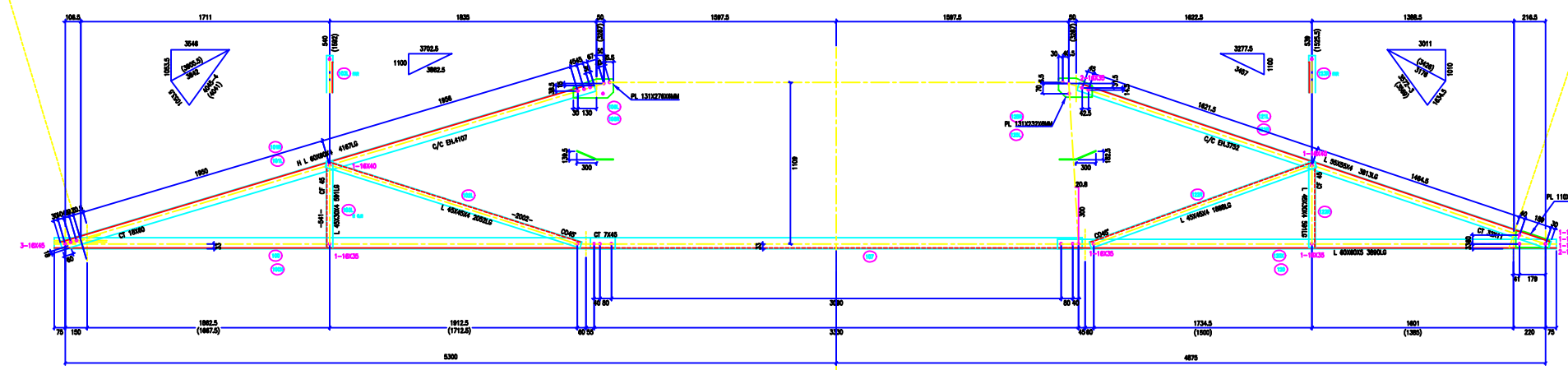
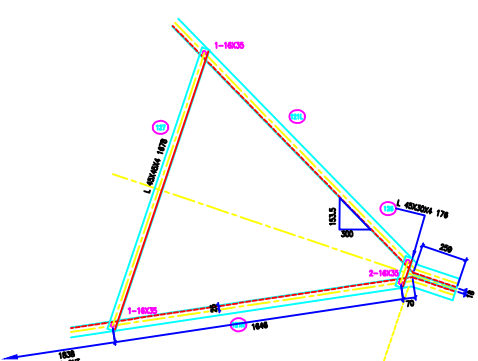
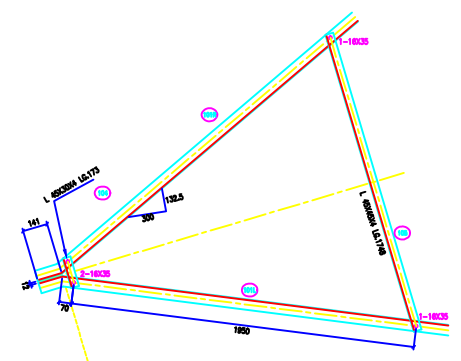


VERTICAL SLICE
 TMB =
 20MB =
 FACE =
 DEVELOP =
 HORIZONTAL SLICE
 TMB =
 20MB =



BOLTS AND NUTS STATEMENT

TYPE	SIZE (H MM)	QUANTITY
B	# 16X35	46
C	# 16X40	20
D	# 16X45	16
E	# 16X50	1
F	# 16X55	-
G	# 16X60	-
H	# 16X65	-
J	# 16X70	-
K	# 16X75	-
L	# 16X80	-
SPRING WASHERS		83
30 O.D PACKING WASHERS # 17.5 MM		
5 mm		4
6 mm		-
8 mm		-
10 mm		-
STEP BOLTS #16 mm X 175mm		-

- GENERAL NOTES:**
1. ALL DIMENSIONS ARE IN MM UNLESS OTHERWISE SPECIFIED.
 2. MILD STEEL BOLT AND NUTS TO IS 4062/15437/5.8 QTY
 3. ALL MILD STEEL BOLT AND NUTS ARE TO BE HOT DIP GALVANIZED AS PER IS 1387 PART-20
 4. ALL MILD STEEL SECTIONS SHALL BE OF TESTED QUALITY CONFORMING TO IS 8080 STANDARD
 5. GALVANIZATION OF TOWER MEMBERS AND FLAT WASHERS AS PER IS 2629
 6. Ø ALL HOLES # 16.5mm FOR #16mm BOLTS
 7. Ø ALL HOLES # 17.5mm FOR #16mm BOLTS
 8. Ø ALL HOLES # 21.5mm FOR #20mm BOLTS
 9. Ø ALL HOLES # 17.5mm FOR #16mm STEP BOLTS
 10. STANDARD SPRING WASHERS ARE TO BE USED UNDER EACH NUT
 11. ALL FABRICATED MEMBERS SHALL HAVE PUFFS
 12. Ø INDICATES MEMBERS BEING USED AS STEP BOLTS
 13. STEP BOLTS ARE TO BE PROVIDED ON TWO DIAGONALLY OPP. LEGS

MARK NO: 100 + 116, 120 & 133

BIHAR STATE POWER TRANSMISSION COMPANY LTD

DRAWN BY		DESCRIPTION	220KV D/C TOWER TYPE "2DB" DETAIL OF BOTTOM CROSS ARM	SCALE	-
CHECKED BY					
APPROVED BY		DRG NO	220KV-D/C-Struct-Bottom-X-25	SHEET NO 1-1	REV. 0