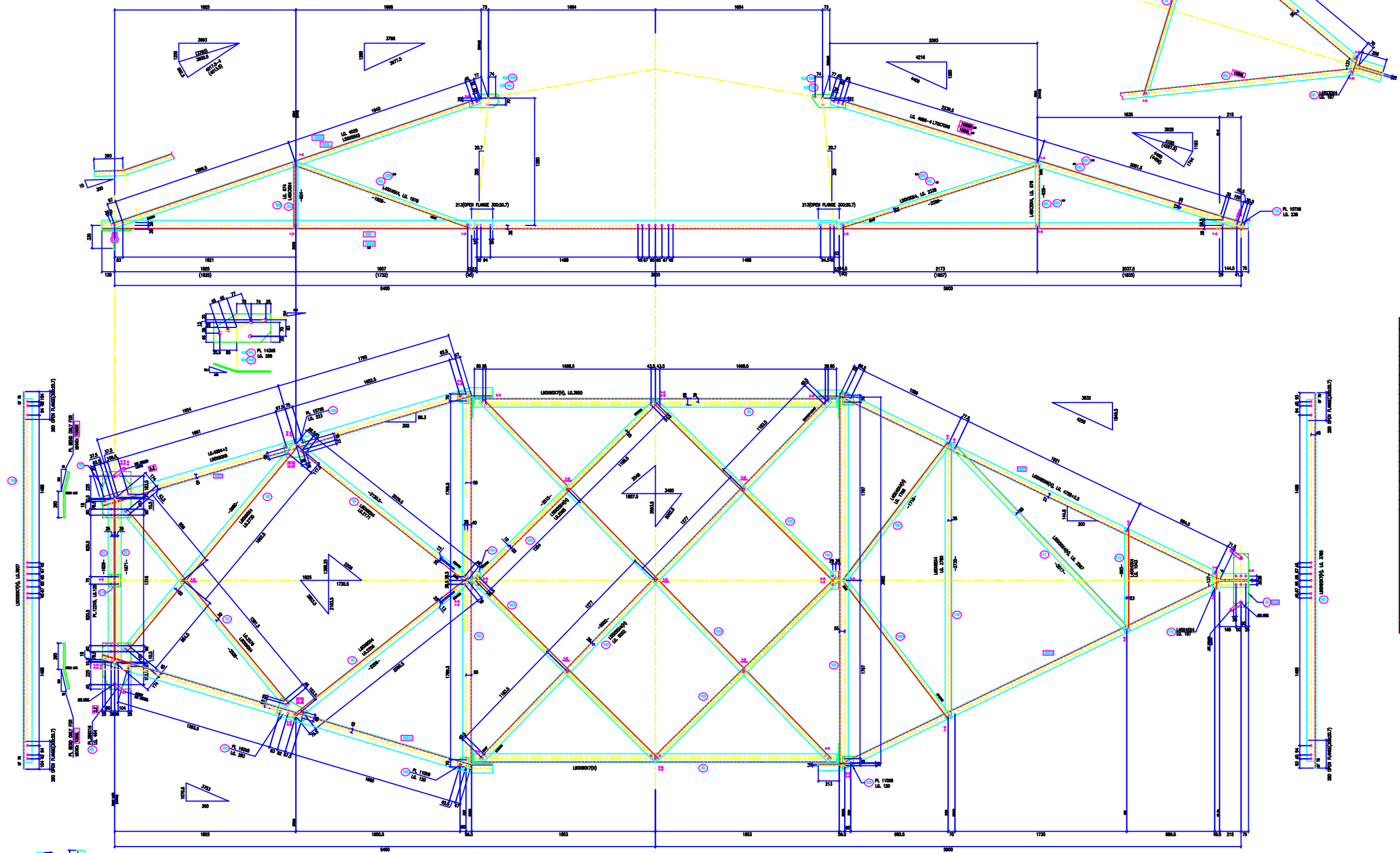
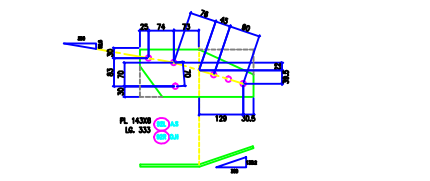
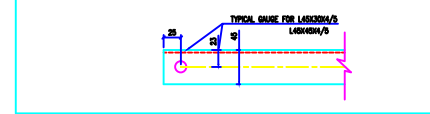


VERTICAL SCALE
 1MM = 0.000044
 2MM = 0.000088
 FACE = 1.000000
 DEVELOP = 1.000011
 HORIZONTAL SCALE
 1MM = 0.000278
 2MM = 0.000557



BOLTS AND NUTS STATEMENT			
TYPE	SIZE (IN MM)	VIEW F-P	QUANTITY EXTRA QTY
B	# 16X35	63	-
C	# 16X40	31	7
D	# 16X45	26	2
E	# 16X50	-	4
F	# 16X55	7	-
G	# 16X60	-	-
H	# 16X65	-	-
J	# 16X70	-	-
K	# 16X75	-	-
L	# 16X80	-	-
SPRING WASHERS			127 13
30 O.D. PACKING WASHERS # 17.5 MM			
5 mm		2	-
6 mm		6	-
8 mm		-	-
10 mm		-	-
STEP BOLTS #16 mm X 175mm			
GENERAL NOTES:			
1. ALL DIMENSIONS ARE IN MM UNLESS OTHERWISE SPECIFIED.			
2. HIGH STRENGTH BOLT AND NUTS TO BE USED/PLATED/AS SUPPLY			
3. ALL HIGH STRENGTH BOLT AND NUTS ARE TO BE HOT DIP GALVANIZED AS PER ASTM A153			
4. ALL HIGH STRENGTH SECTIONS SHALL BE OF TESTED QUALITY CONFORMING TO IS 2002 STANDARD			
5. GALVANIZATION OF TOWER MEMBERS AND PLAT WASHERS AS PER IS 2002			
6. ALL HOLES # 12.5mm FOR #16mm BOLTS			
7. ALL HOLES # 17.5mm FOR #18mm BOLTS			
8. ALL HOLES # 21.5mm FOR #20mm BOLTS			
9. ALL HOLES # 25.5mm FOR #24mm BOLTS			
10. SPRING WASHERS ARE TO BE USED UNDER EACH NUT			
11. ALL FABRICATED MEMBERS SHALL HAVE FINISH			
12. CIRCULATED MEMBER BEAM USED AS STEP BOLTS			
13. STEP BOLTS ARE TO BE PROVIDED ON TWO DIAGONALLY OPP. LEGS			
MARK NO: 80 + 115			

BIHAR STATE POWER TRANSMISSION COMPANY LTD

DRAWN BY		DESCRIPTION	220KV D/C TOWER TYPE "2DD" DETAIL OF BOTTOM CROSS ARM	SCALE	-
CHECKED BY		DRG NO	220KV-D/C-Struct-Bottom-X-45	SHEET NO	1-1
APPROVED BY				REV.	0