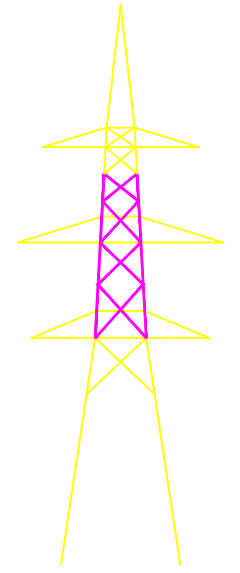
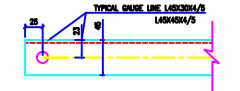
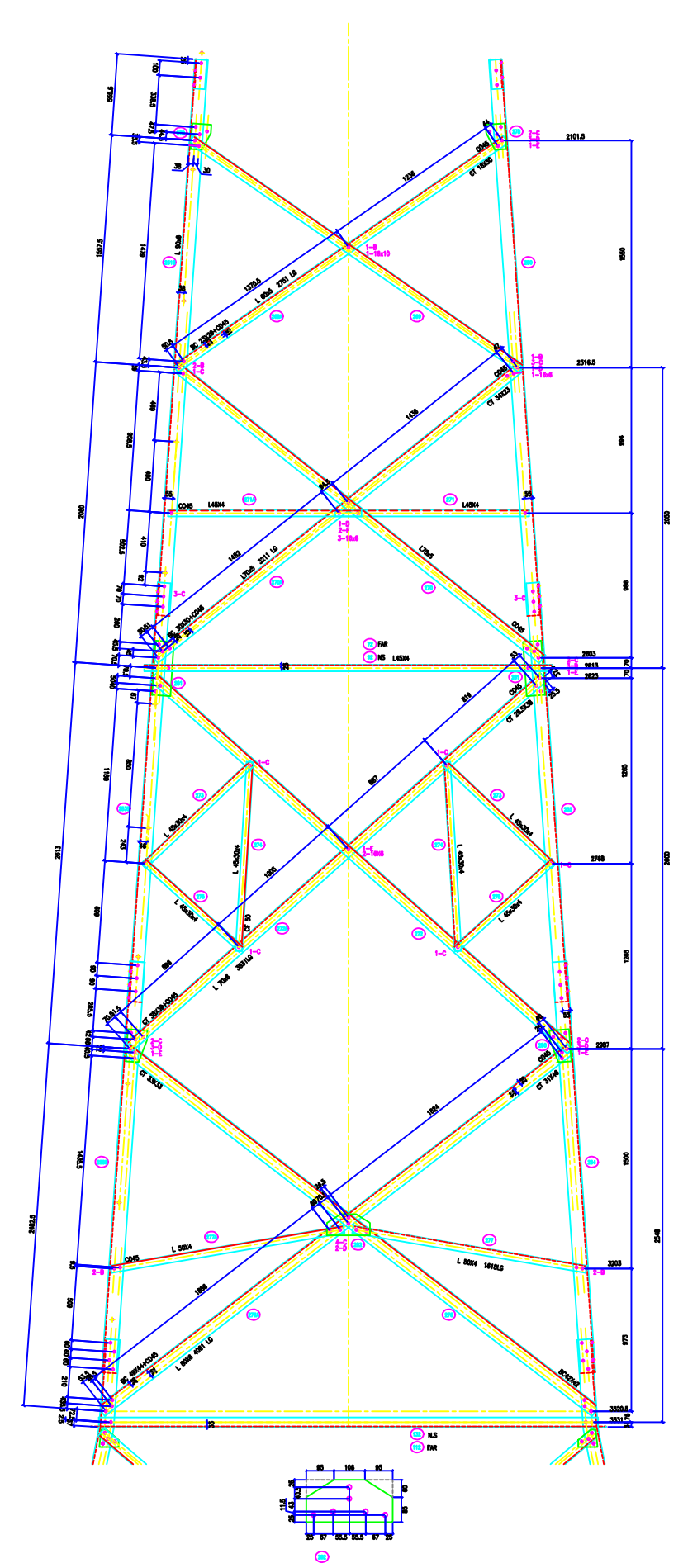
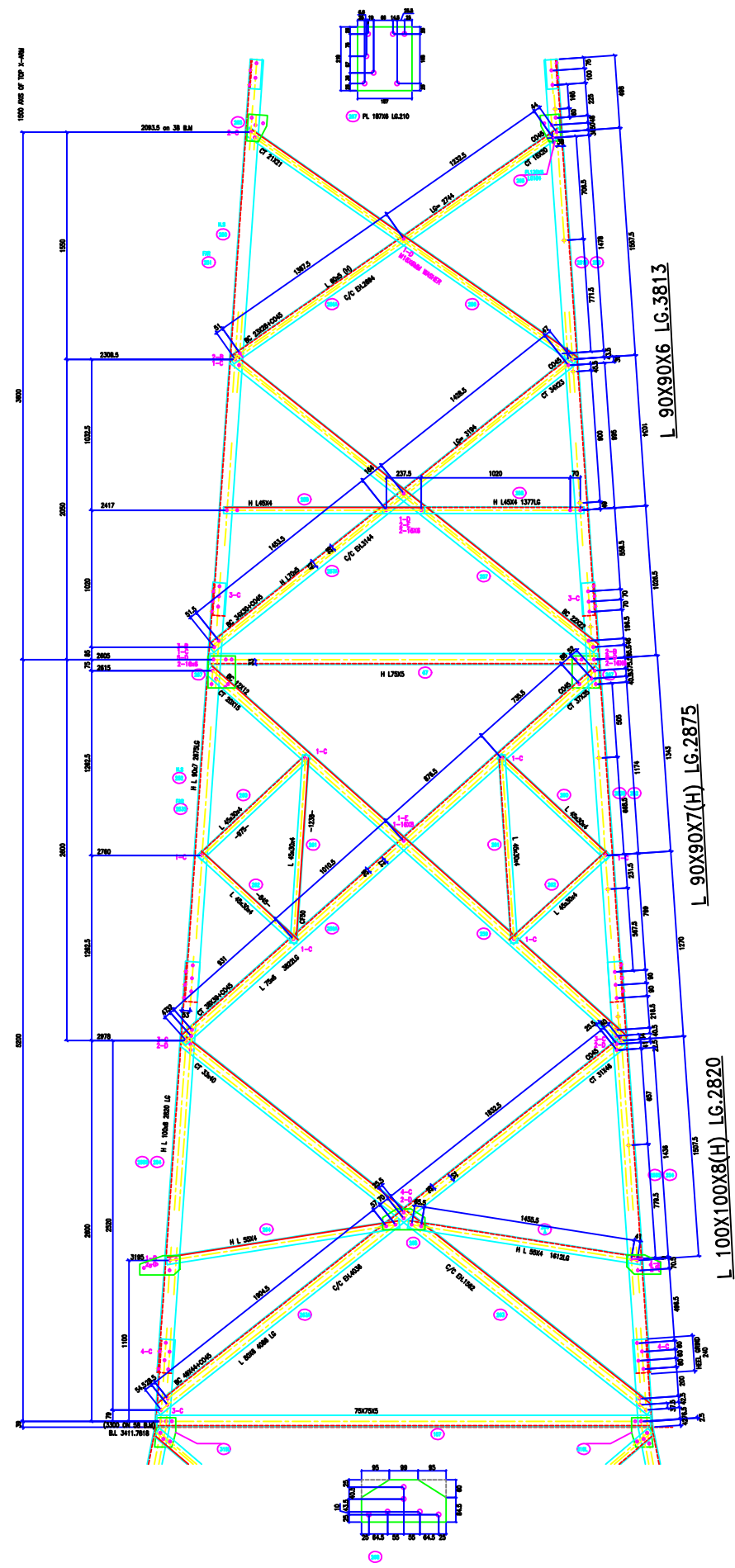


VERTICAL SCALE  
 1MM = 0.000000  
 2MM = 0.000000  
 FACE = 1.000000  
 DEVELOP = 1.000000  
 HORIZONTAL SCALE  
 1MM = 0.000002  
 2MM = 1.000000



**BOLTS AND NUTS STATEMENT**

TYPE	SIZE (M.M)	DC	DCR	QUANTITY
B	# 16X35	50	50	
C	# 16X40	12	11	
D	# 16X45	9	7	
E	# 16X50	2	5	
F	# 16X55	-	5	
G	# 16X60	-	-	
H	# 16X65	-	-	
J	# 16X70	-	-	
K	# 16X75	-	-	
L	# 16X80	-	-	
SPRING WASHERS			73	73
30 O.D PACKING WASHERS # 17.5 MM				
	5 mm		2	2
	6 mm		1	1
	8 mm		-	-
	10 mm		-	-
STEP BOLTS #16 mm X 175mm				

**GENERAL NOTES:**  
 1. ALL DIMENSIONS ARE IN MM UNLESS OTHERWISE SPECIFIED.  
 2. MILD STEEL BOLT AND NUTS TO IS 4032/15437/3.3 QTY  
 3. ALL MILD STEEL BOLT AND NUTS ARE TO BE HOT DIP GALVANIZED AS PER IS 1327 PART-02  
 4. ALL MILD STEEL SECTIONS SHALL BE OF TESTED QUALITY CONFORMING TO IS 2002 STANDARD  
 5. GALVANIZATION OF TOWER MEMBERS AND FLAT WASHERS AS PER IS 2002  
 6. ALL HOLES # 16.5mm FOR #16mm BOLTS  
 7. ALL HOLES # 17.5mm FOR #16mm BOLTS  
 8. ALL HOLES # 21.5mm FOR #20mm BOLTS  
 9. ALL HOLES # 17.5mm FOR #16mm STEP BOLTS  
 10. STANDARD SPRING WASHERS ARE TO BE USED UNDER EACH NUT  
 11. ALL FABRICATED MEMBERS SHALL HAVE PROFS.  
 12. PROCATES MEMBERS BEING USED AS STEP BOLTS.  
 13. STEP BOLTS ARE TO BE PROVIDED ON TWO DIAGONALLY OPP. LEGS

250 + 252

<b>BIHAR STATE POWER TRANSMISSION COMPANY LTD</b>			
	DESCRIPTION	220KV D/C TOWER TYPE "2DB" DETAIL OF CAGE-II	SCALE -
DRAWN BY	DRG NO	220KV-D/C-Struct-CageII-24	SHEET NO 1-1
CHECKED BY	REV.	0	0
APPROVED BY			