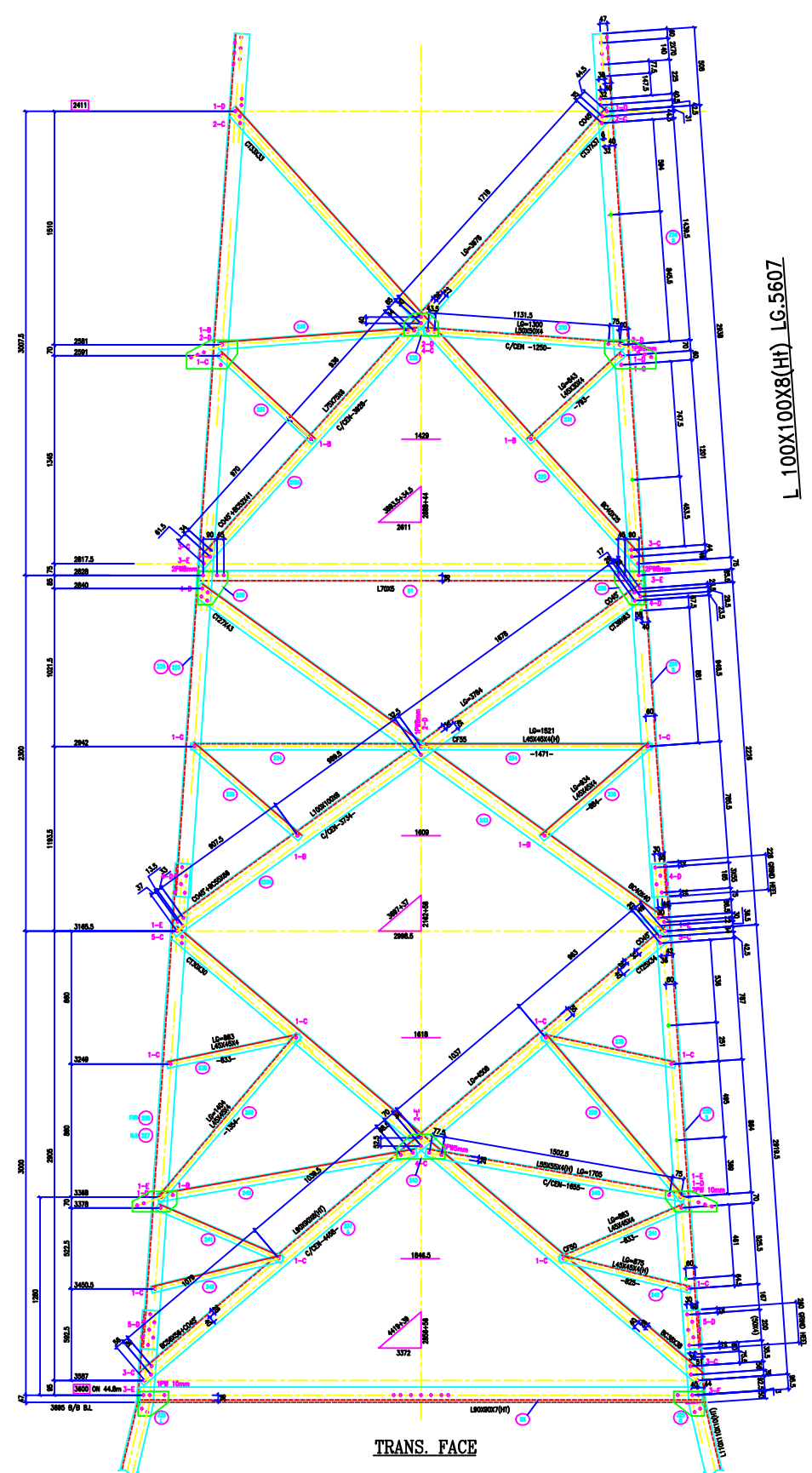
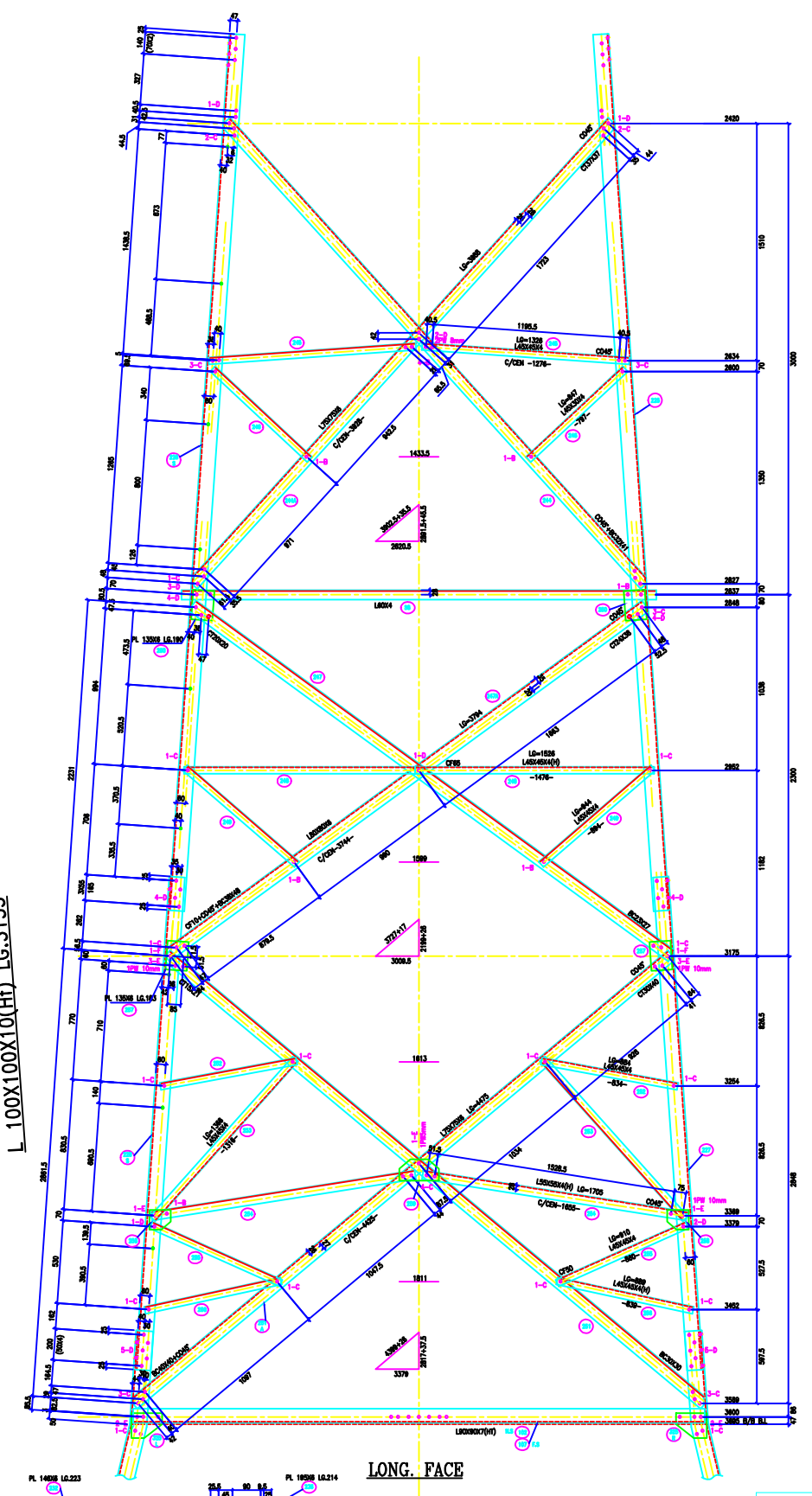


VERTICAL SCALE
 20M = 0.000044
 30M = 0.000066
 FACE = 1.000000
 DEVELOP = 1.000011
 BRIDGE SLAB
 10M = 0.000022
 20M = 0.000044

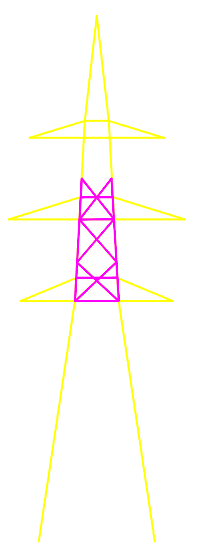
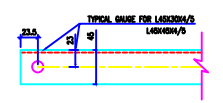
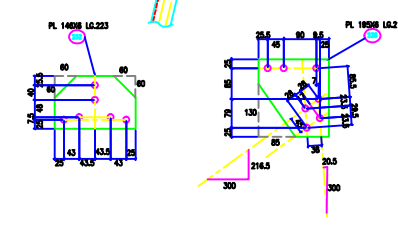
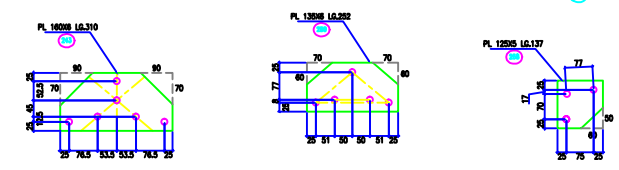


L 100X100X8(Ht) LG-560Z

L 100X100X10(Ht) LG-3155



LONG. FACE



BOLTS AND NUTS STATEMENT

TYPE	SIZE (IN MM)	QUANTITY
B	# 16X35	34
C	# 16X40	166
D	# 16X45	146
E	# 16X50	62
F	# 16X55	4
G	# 16X60	-
H	# 16X65	-
J	# 16X70	-
K	# 16X75	-
L	# 16X80	-
SPRING WASHERS		412
30 O.D. PACKING WASHERS # 17.5 MM		
	5 mm	4
	6 mm	2
	8 mm	16
	10 mm	6
STEP BOLTS #16 mm X 175mm		17

GENERAL NOTES:

1. ALL DIMENSIONS ARE IN MM UNLESS OTHERWISE SPECIFIED.
2. HIGH STRENGTH BOLT AND NUTS TO BE USED PER IS 1903.
3. ALL HIGH STRENGTH BOLT AND NUTS ARE TO BE HOT DIP GALVANIZED AS PER ASTM A193.
4. ALL HIGH STRENGTH SECTIONS SHALL BE OF TESTED QUALITY CONFORMING TO IS 2002 STANDARD.
5. GALVANIZATION OF TOWER MEMBERS AND PLATE WASHERS AS PER IS 2002.
6. ALL HOLES # 12.5mm FOR #10mm BOLTS.
7. ALL HOLES # 17.5mm FOR #16mm BOLTS.
8. ALL HOLES # 21.5mm FOR #20mm BOLTS.
9. ALL HOLES # 25.5mm FOR #25mm BOLTS.
10. STANDARD SPRING WASHERS ARE TO BE USED UNDER EACH NUT.
11. ALL FABRICATED MEMBERS SHALL HAVE PROTECTIVE PAINT.
12. DIMENSIONS BETWEEN BOLTS USED AS STEP BOLTS.
13. STEP BOLTS ARE TO BE PROVIDED ON TWO DIAGONALLY OPP. LEGS.

MARK NO: 225 + 259

BIHAR STATE POWER TRANSMISSION COMPANY LTD

DRAWN BY	DESCRIPTION	220KV D/C TOWER TYPE "2DD"	SCALE
CHECKED BY		DETAIL OF CAGE-II	-
APPROVED BY	DRG NO	220KV-D/C-Struct-CageII-44	SHEET NO 1-1
			REV. 0