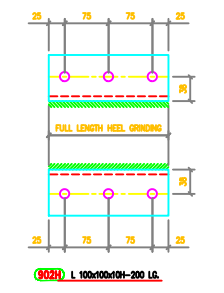
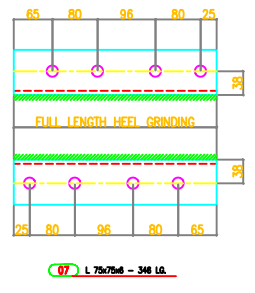
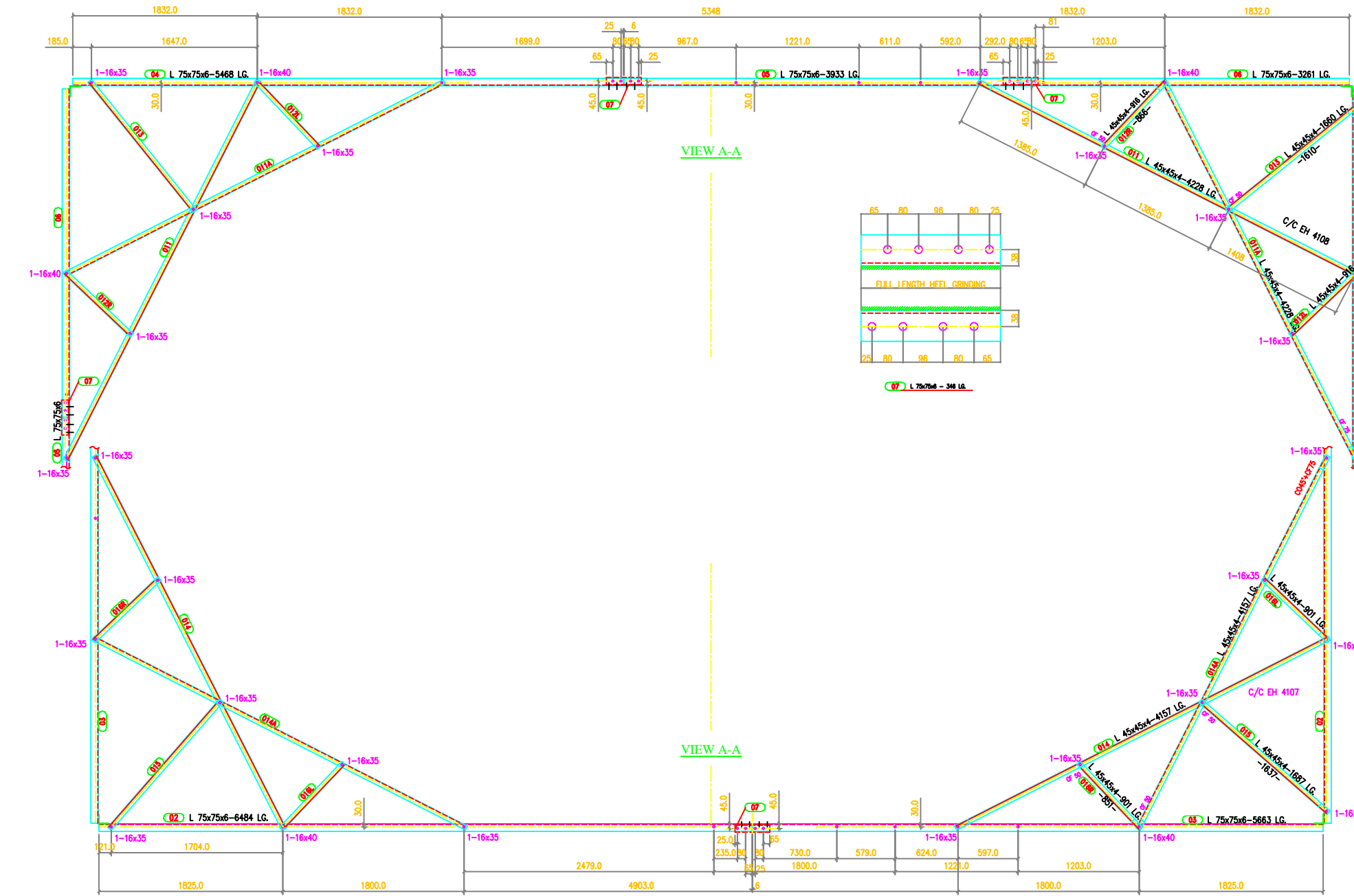
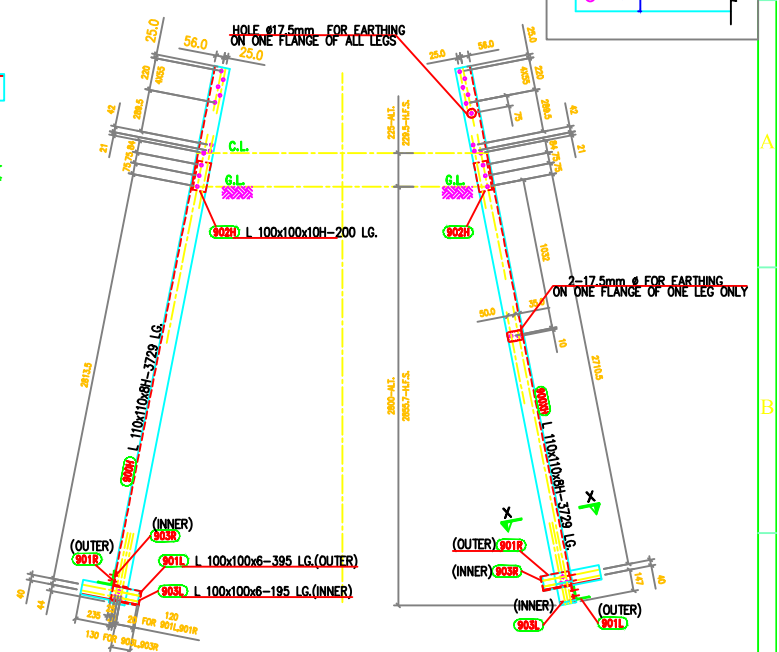
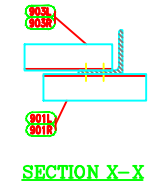
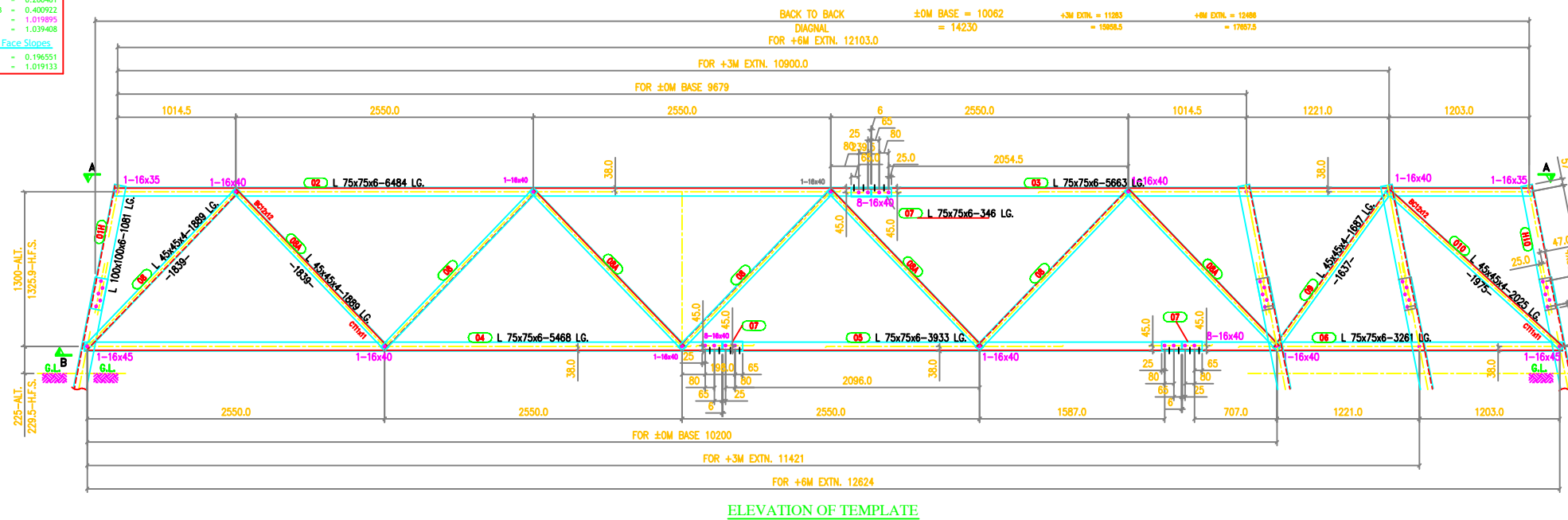


TOWER SLOPE
(FOR ±0M TOWER-10)

Tan B	0.200461
2 Tan B	0.400922
Face	1.019995
Dev	1.039408

In Face Slopes

Tan B	0.196551
Sec B	1.019133



- GENERAL NOTES :**
1. ALL DIMENSIONS ARE IN "mm" UNLESS OTHERWISE SPECIFIED.
 2. ALL ERECTION MARKS ARE TO BE PREPARED WITH "200"
 3. ○ INDICATES #17.5 HOLE FOR M16 BOLT U.S.
 4. STRUCTURAL STEEL SHALL BE AS FOLLOWS
(i) MILD STEEL - IS2062 WITH YIELD STRESS F_y=2500 KG/50.CM.
(ii) HIGH TENSILE STEEL - IS8500 GR4908
 5. BOLTS AND NUTS AS PER IS12427 - 1988, CONFORM TO GRADE-5.6
 6. GALVANIZING SHALL CONFORM TO IS2023-1985 & IS4798-1996
 7. SPRING WASHER SHALL BE CONFORM TO IS 3383-1994
 8. STEP BOLTS SHALL BE DIAGONALLY OPPOSITE LEGS
 9. STEP BOLTS SHALL BE IS10238-1982
 10. SUFFIX "H" INDICATES HIGH TENSILE STEEL.

SUMMARY OF BOLTS FOR STUB & STUB SETTING TEMPLATE				
BOLT SIZE	QUANTITY FOR TEMPLATE	QUANTITY FOR STUB	GRADE	REMARKS
16# x 35 LG	56	0	5.6	-
16# x 40 LG	188	-	5.6	-
16# x 45 LG	8	24	5.6	-
16# x 50 LG	-	-	5.6	-
16# x 55 LG	-	-	5.6	-
16# x 60 LG	-	-	5.6	-
16# x 65 LG	-	-	5.6	-
16# x 3.5 THK	252	24	-	SPRING WASHERS

MARK Nos. 01 TO 016 FOR STUB SETTING TEMPLATE
MARK Nos. 900 TO 903 FOR STUB

BIHAR STATE POWER TRANSMISSION COMPANY LTD

DRAWN BY		DESCRIPTION 220KV D/C TOWER TYPE "2DB" STUB & STUB SETTING TEMPLATE	SCALE -
CHECKED BY			
APPROVED BY			
DRG NO	220KV-D/C-Struct-Stub-Temp-21	SHEET NO 1-1	REV. 0