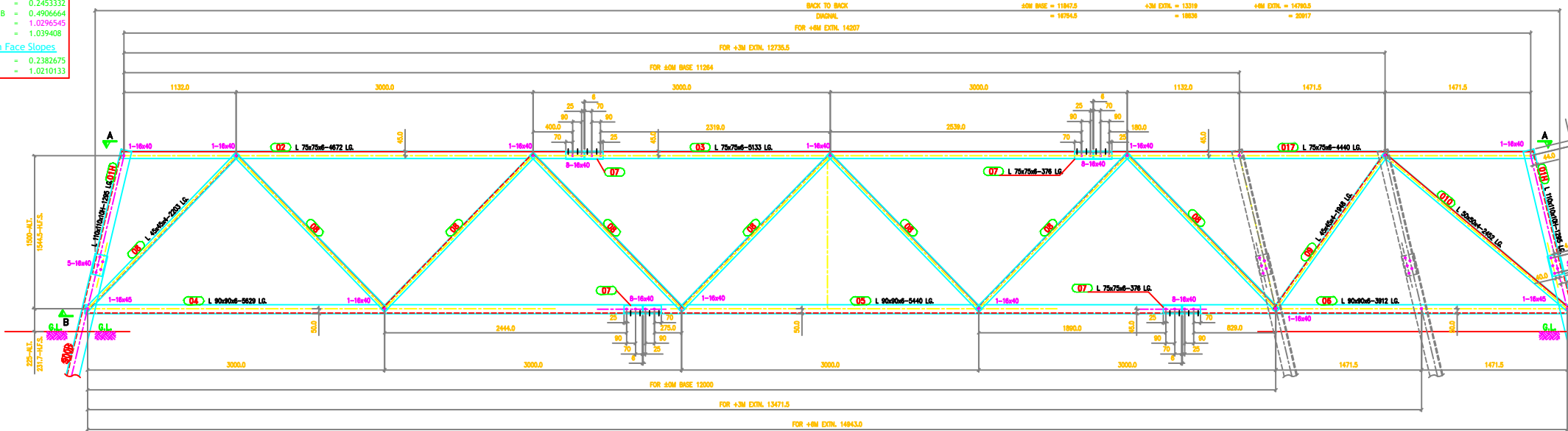
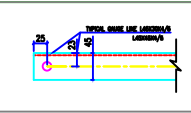


TOWER SLOPE
(FOR 40M TOWER-00)

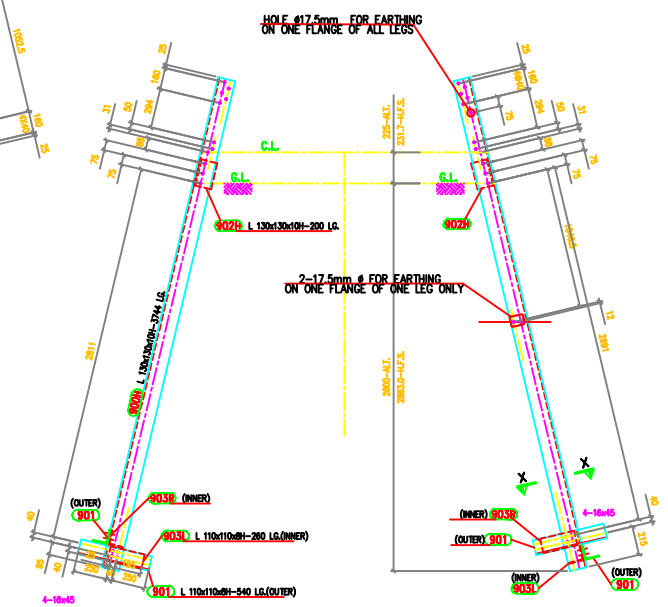
Tan B = 0.2453332
2 Tan B = 0.4906664
Face = 1.0239545
Dev = 1.039408

In Face Slopes

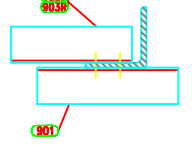
Tan B = 0.2382675
Sec B = 1.0210133



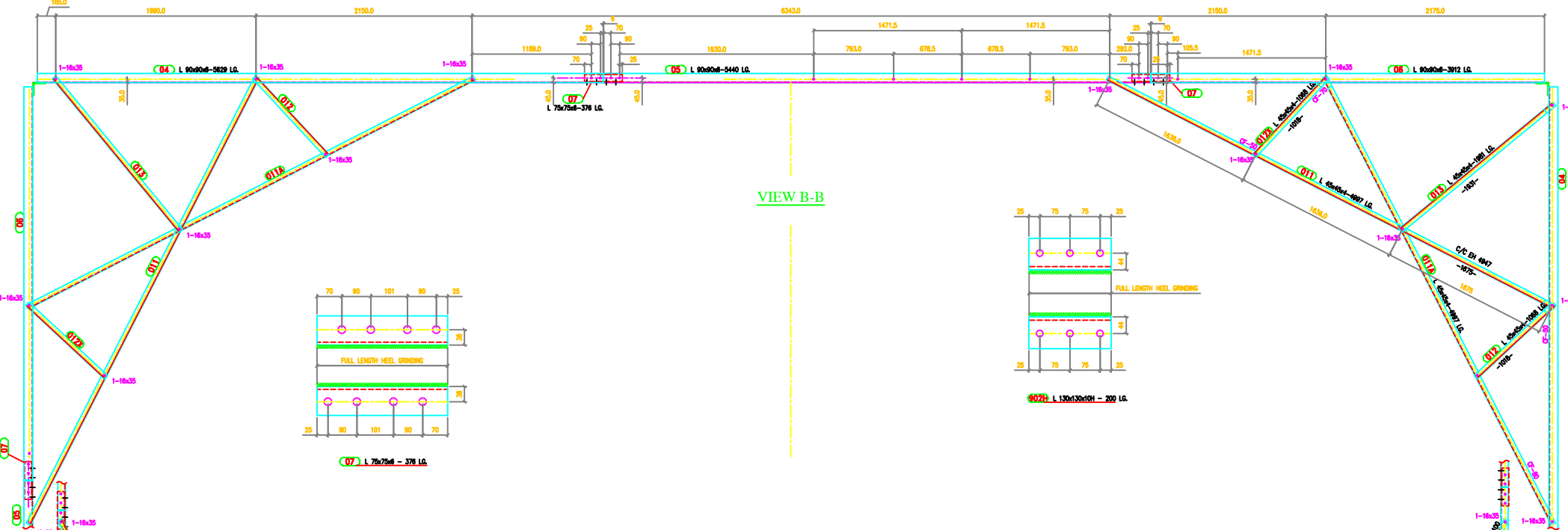
ELEVATION OF TEMPLATE



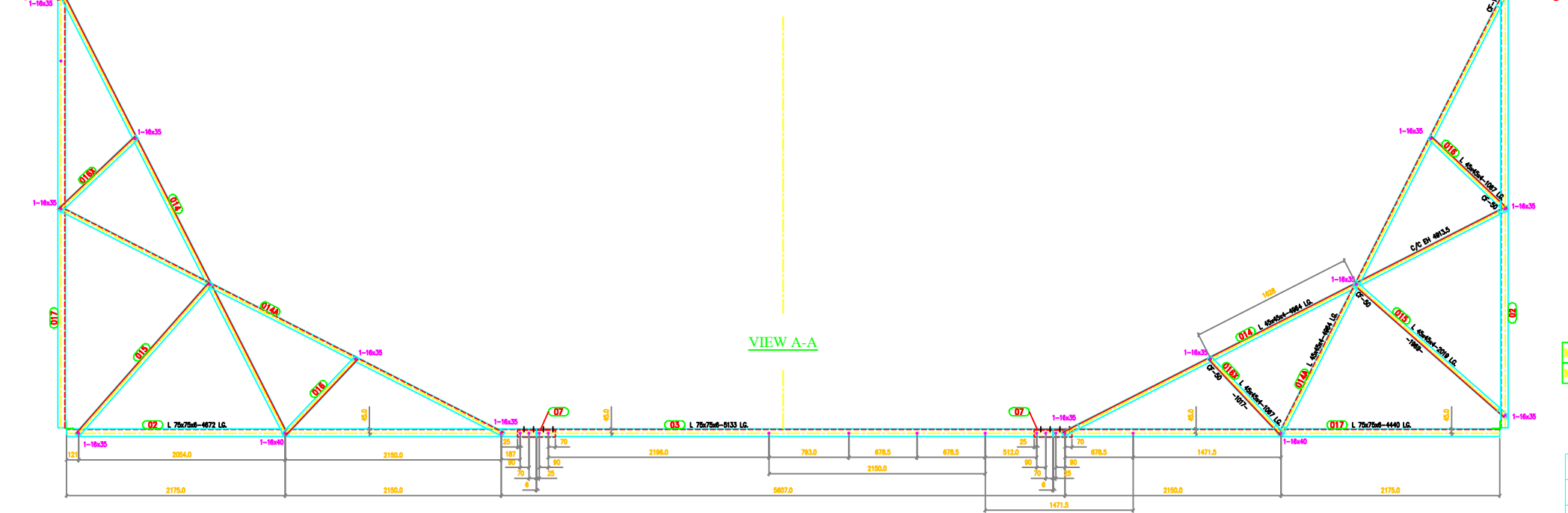
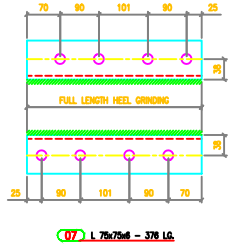
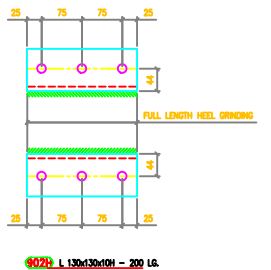
ELEVATION OF STUB



SECTION X-X



VIEW B-B



VIEW A-A

GENERAL NOTES :

1. ALL DIMENSIONS ARE IN "mm" UNLESS OTHERWISE SPECIFIED.
2. ALL ERECTION MARKS ARE TO BE PREFIXED WITH - "2DA"
3. ○ INDICATES Ø17.5 HOLE FOR M16 BOLT U.O.S.
4. STRUCTURAL STEEL SHALL BE AS FOLLOWS
(i) MILD STEEL - IS:2062 WITH YIELD STRESS F_y-2550 KG/SQ.CM.
(ii) HIGH TENSILE STEEL - IS:8500 GR490B
5. BOLTS AND NUTS AS PER IS:12427 - 1988. CONFORM TO GRADE-5.6
6. GALVANISING SHALL CONFORM TO IS:2629-1985 & IS:4759-1996.
7. SPRING WASHER SHALL BE CONFORM TO IS 3063-1994
8. STEP BOLTS SHALL BE DIAGONALLY OPPOSITE LEGS
9. STEP BOLTS SHALL BE IS:10238-1982
10. SUFFIX "H" INDICATES HIGH TENSILE STEEL

SUMMARY OF BOLTS FOR STUB & STUB SETTING TEMPLATE				
BOLT SIZE FOR TEMPLATE	QUANTITY FOR TEMPLATE	QUANTITY FOR STUB GRADE	REMARKS	
16# x 35 LG	48	0	5.6	-
16# x 40 LG	138	-	5.6	-
16# x 45 LG	48	32	5.6	-
16# x 50 LG	-	-	5.6	-
16# x 55 LG	-	-	5.6	-
16# x 60 LG	-	-	5.6	-
16# x 65 LG	-	-	5.6	-
16# x 3.5 THK	234	32		SPRING WASHERS

MARK Nos. 01 TO 017 FOR STUB SETTING TEMPLATE
MARK Nos. 900 TO 903 FOR STUB

BIHAR STATE POWER TRANSMISSION COMPANY LTD

DRAWN BY		DESCRIPTION 220KV D/C TOWER TYPE "2DD" STUB & STUB SETTING TEMPLATE	SCALE
CHECKED BY			-
APPROVED BY			
DRG NO	220KV-D/C-Struct-Stub-Temp-41	SHEET NO 1-1	REV. 0