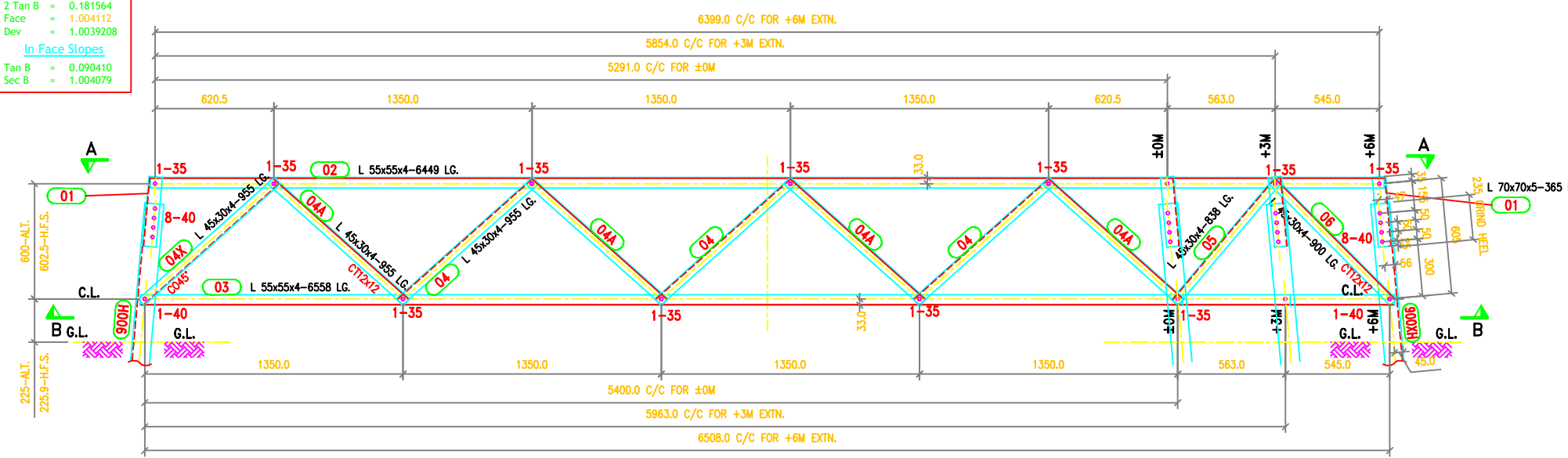
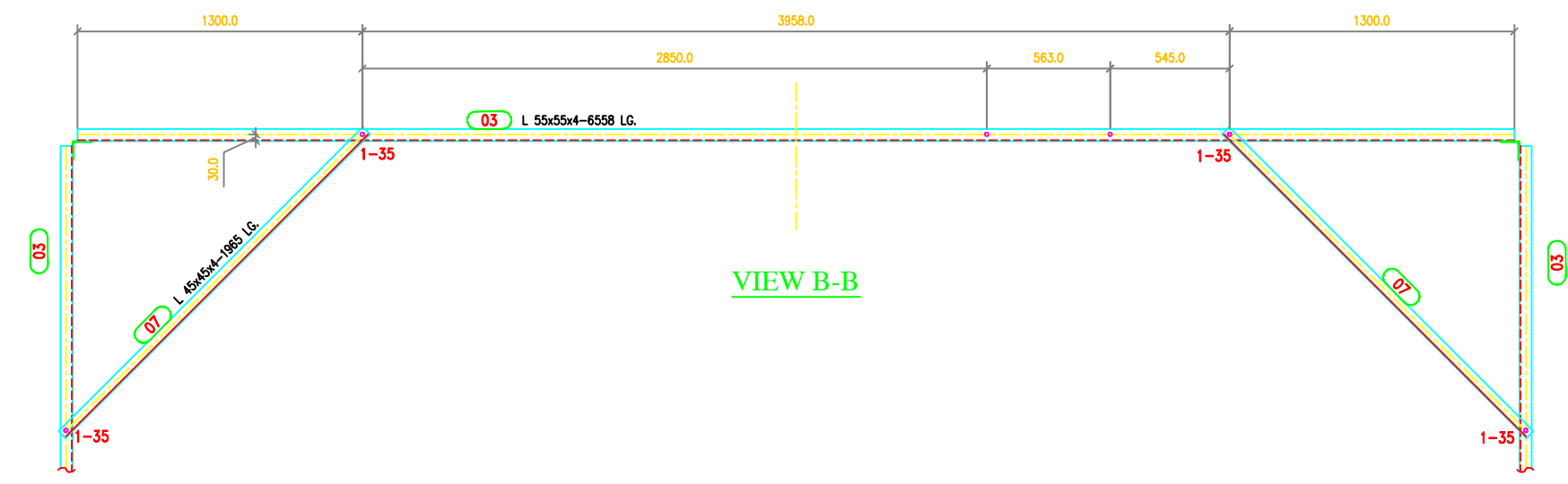


TOWER SLOPE (FOR ±0M TOWER)
 Tan B = 0.090782
 2 Tan B = 0.181564
 Face = 1.004112
 Dev = 1.0039208

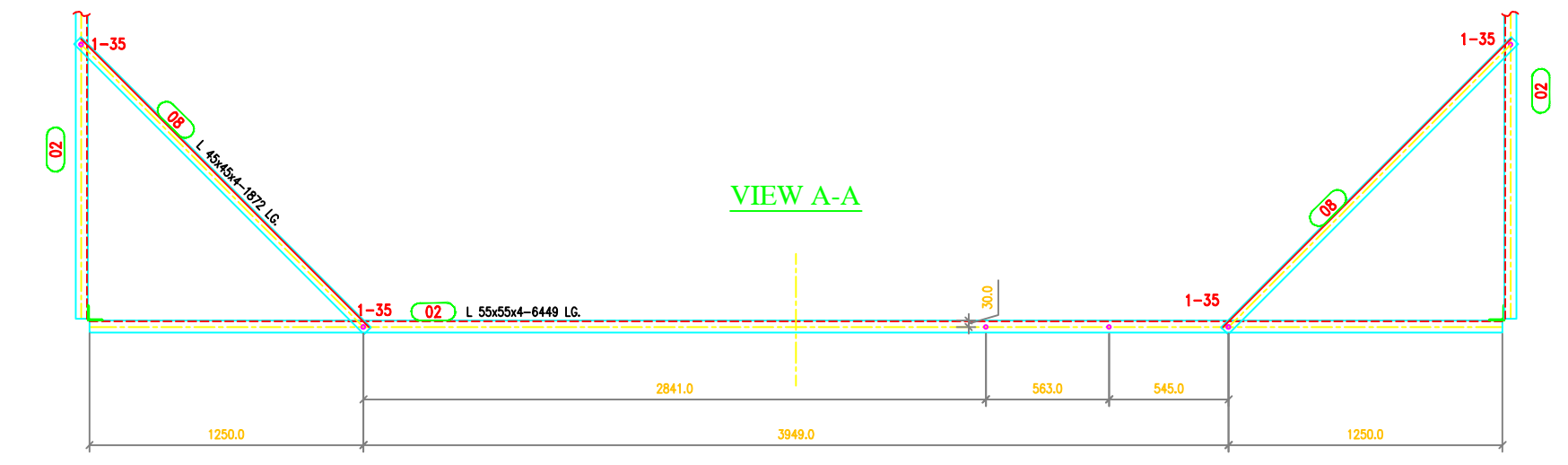
In Face Slopes
 Tan B = 0.090410
 Sec B = 1.004079



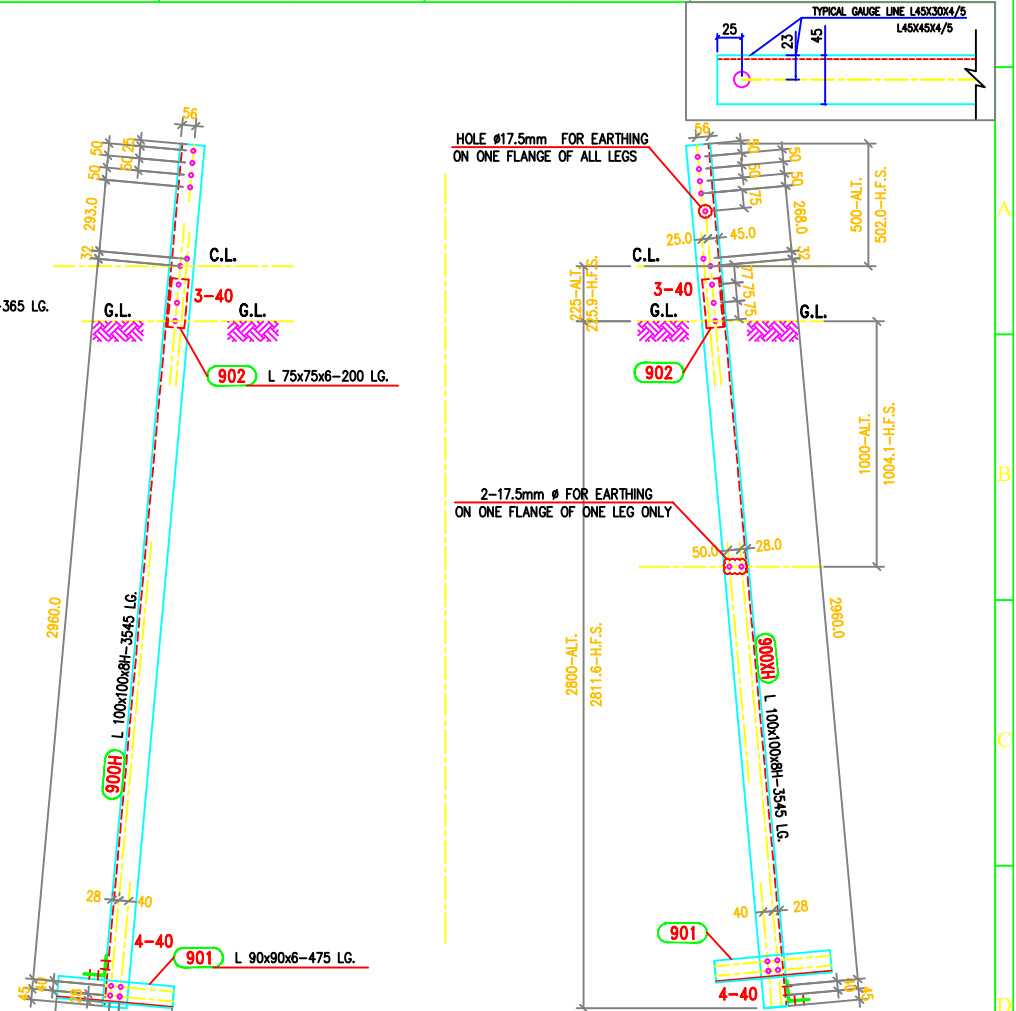
ELEVATION OF TEMPLATE



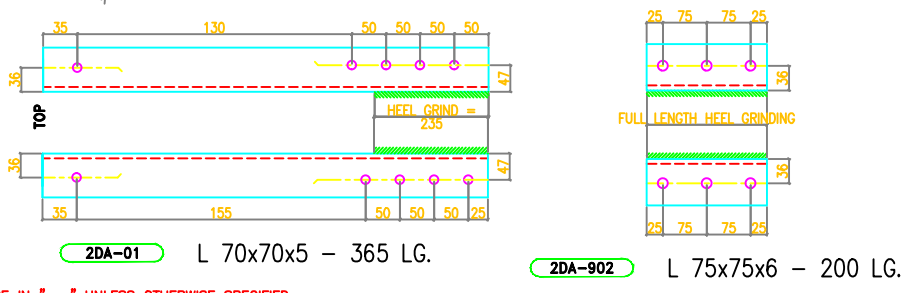
VIEW B-B



VIEW A-A



DETAIL OF STUB



GENERAL NOTES :

1. ALL DIMENSIONS ARE IN "mm" UNLESS OTHERWISE SPECIFIED.
2. ALL ERECTION MARKS ARE TO BE PREFIXED WITH - "2DA"
3. ○ INDICATES #17.5 HOLE FOR M16 BOLT U.O.S.
4. STRUCTURAL STEEL SHALL BE AS FOLLOWS
 (i) MILD STEEL - IS:2062 WITH YIELD STRESS $F_y=2550$ KG/SQ.CM.
 (ii) HIGH TENSILE STEEL - IS:8500 GR490B
5. BOLTS AND NUTS AS PER IS:12427 - 1988. CONFORM TO GRADE-5.6
6. GALVANISING SHALL CONFORM TO IS:2629-1985 & IS:4759-1996.
7. SPRING WASHER SHALL BE CONFIRM TO IS 3063-1994
8. STEP BOLTS SHALL BE DIAGONALLY OPPOSITE LEGS
9. STEP BOLTS SHALL BE IS:10238-1982
10. SUFFIX "H" INDICATES HIGH TENSILE STEEL

MARK Nos. 01 TO 08 FOR STUB SETTING TEMPLATE

MARK Nos. 900 TO 902 FOR STUB

SUMMARY OF BOLTS FOR STUB & STUB SETTING TEMPLATE				
BOLT SIZE	QUANTITY FOR STUB	QUANTITY FOR TEMPLATE	GRADE	REMARKS
16φ x 35 LG	-	60	5.6	-
16φ x 40 LG	56	40	5.6	-
16φ x 45 LG	-	-	5.6	-
16φ x 50 LG	-	-	5.6	-
16φ x 55 LG	-	-	5.6	-
16φ x 60 LG	-	-	5.6	-
16φ x 65 LG	-	-	5.6	-
16φ x 3.5 THK	56	100	-	SPRING WASHERS

BIHAR STATE POWER TRANSMISSION COMPANY LTD

DRAWN BY	DESCRIPTION	220KV D/C TOWER TYPE "2DA" STUB & STUB SETTING TEMPLATE	SCALE	-
CHECKED BY	DRG NO	220KV-D/C-Struct-Stub-Template-11	SHEET NO	1-1
APPROVED BY			REV.	0

KRR-BSPCL-2DA-001