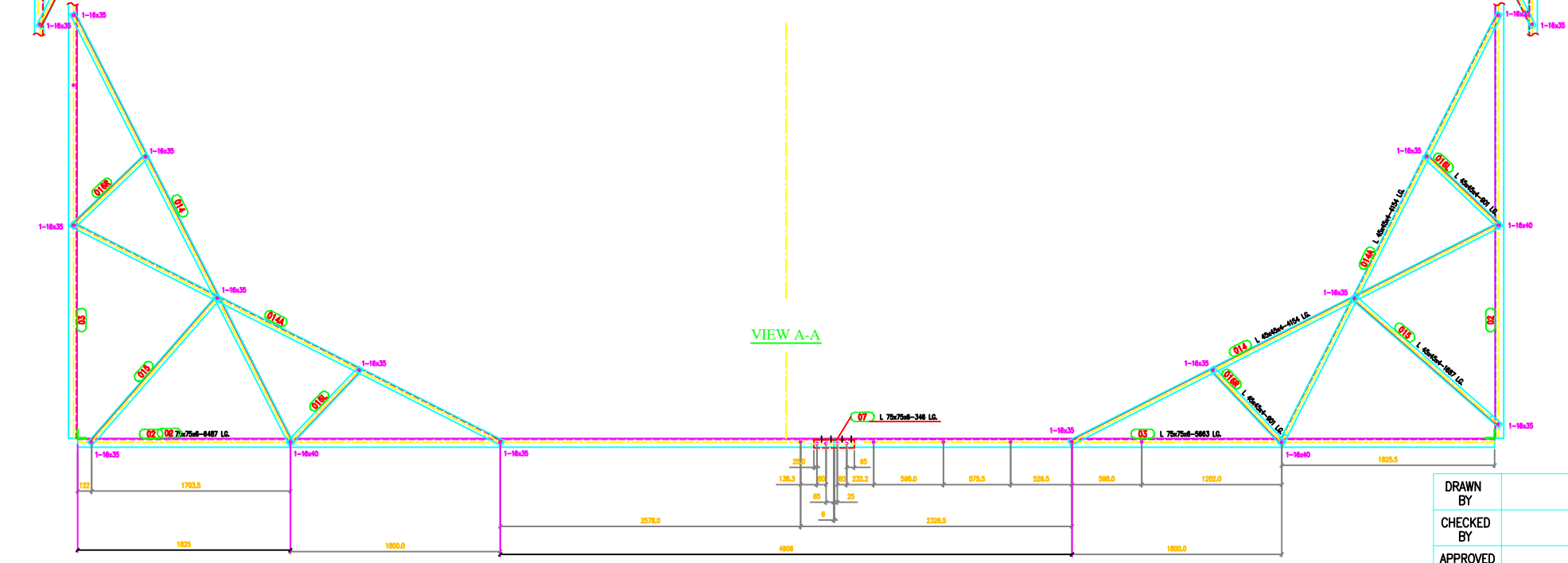
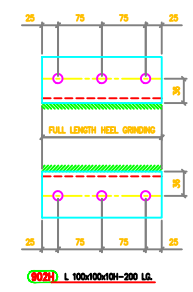
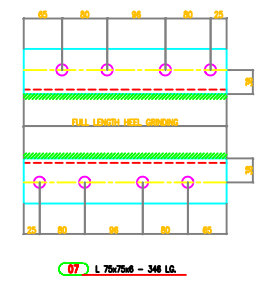
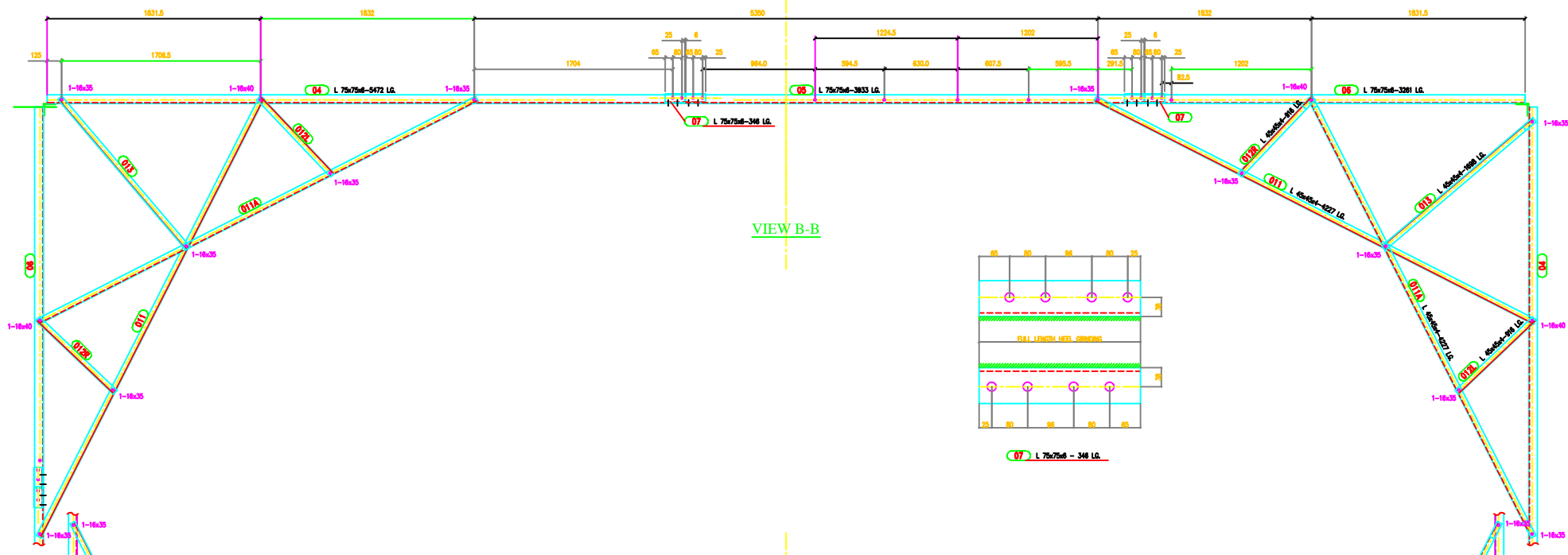
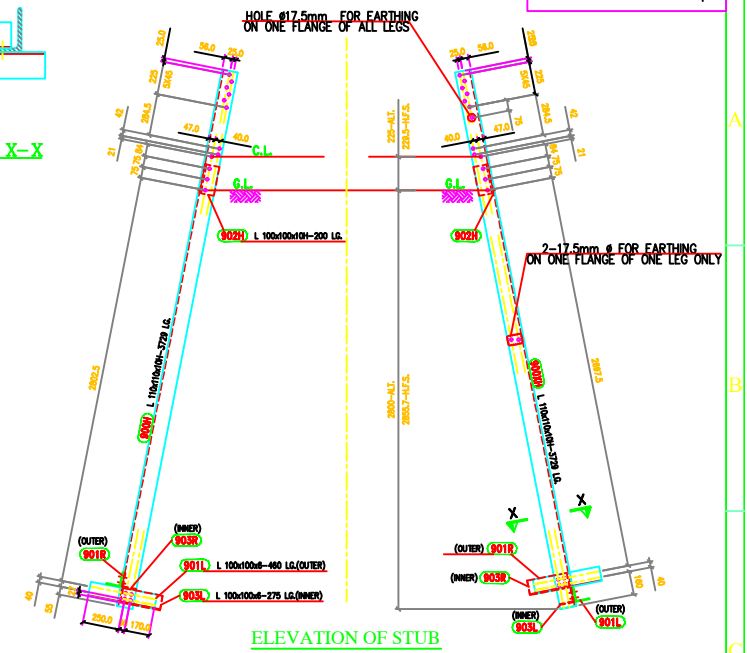
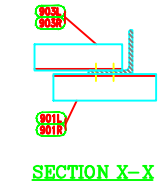
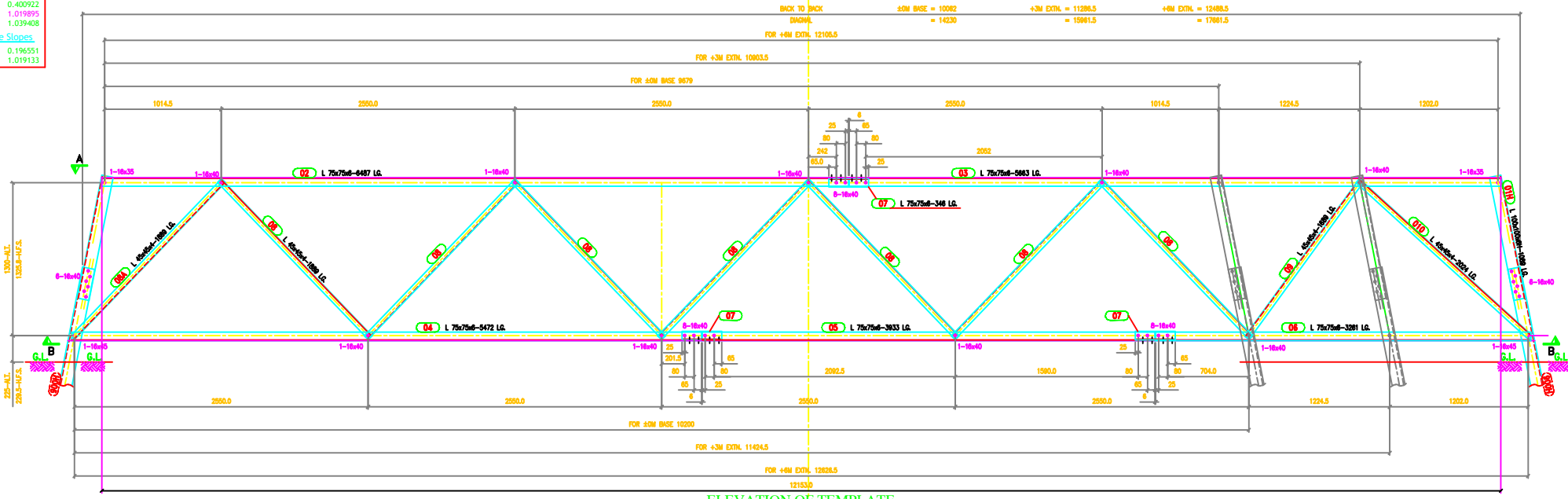


**TOWER SLOPE**  
 (FOR 40M TOWER-DC)  
 Tan B = 0.230461  
 2 Tan B = 0.460922  
 Face = 1.019995  
 Dev = 1.039408  
**In Face Slopes**  
 Tan B = 0.196551  
 Sec B = 1.019133



- GENERAL NOTES:**
1. ALL DIMENSIONS ARE IN "mm" UNLESS OTHERWISE SPECIFIED.
  2. ALL ERECTION MARKS ARE TO BE PREFIXED WITH - "20"
  3. ○ INDICATES #17.5 HOLE FOR M16 BOLT U.S.
  4. STRUCTURAL STEEL SHALL BE AS FOLLOWS  
 (i) MILD STEEL - IS2002 WITH YIELD STRESS  $F_y=250$  KG/SQ.CM.  
 (ii) HIGH TENSILE STEEL - IS8500 GR4008
  5. BOLTS AND NUTS AS PER IS12407 - 1995 CONFORM TO GRADE-5.8
  6. GALVANISING SHALL CONFORM TO IS2029-1985 & IS4759-1996.
  7. SPRING WASHER SHALL BE CONFORM TO IS 3043-1994
  8. STEP BOLTS SHALL BE DIAGONALLY OPPOSITE LEGS
  9. STEP BOLTS SHALL BE IS10236-1982
  10. SUFFIX "H" INDICATES HIGH TENSILE STEEL.

**MARK Nos. 01 TO 016 FOR STUB SETTING TEMPLATE**  
**MARK Nos. 900 TO 903 FOR STUB**

SUMMARY OF BOLTS FOR STUB & STUB SETTING TEMPLATE			
BOLT SIZE	QUANTITY FOR TEMPLATE	QUANTITY FOR STUBGRADE	REMARKS
16# x 35 LG	56	0	5.8
16# x 40 LG	188	-	5.8
16# x 45 LG	16	32	5.8
16# x 50 LG	-	-	5.8
16# x 55 LG	-	-	5.8
16# x 60 LG	-	-	5.8
16# x 65 LG	-	-	5.8
16# x 3.5 THK	260	24	SPRING WASHERS

DRAWN BY  
 CHECKED BY  
 APPROVED BY

**BIHAR STATE POWER TRANSMISSION COMPANY LTD**

<b>DESCRIPTION</b>	220KV D/C TOWER TYPE "2DC" STUB & STUB SETTING TEMPLATE	<b>SCALE</b>	-
<b>DRG NO</b>	220KV-D/C-Struct-Stub-Temp-31	<b>SHEET NO</b>	1-1
		<b>REV.</b>	0