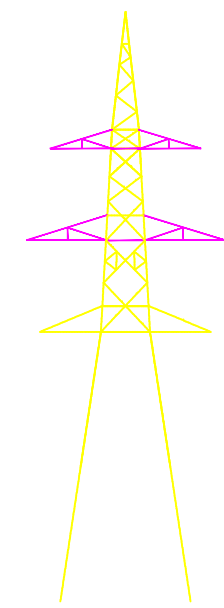
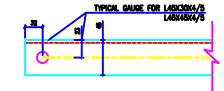
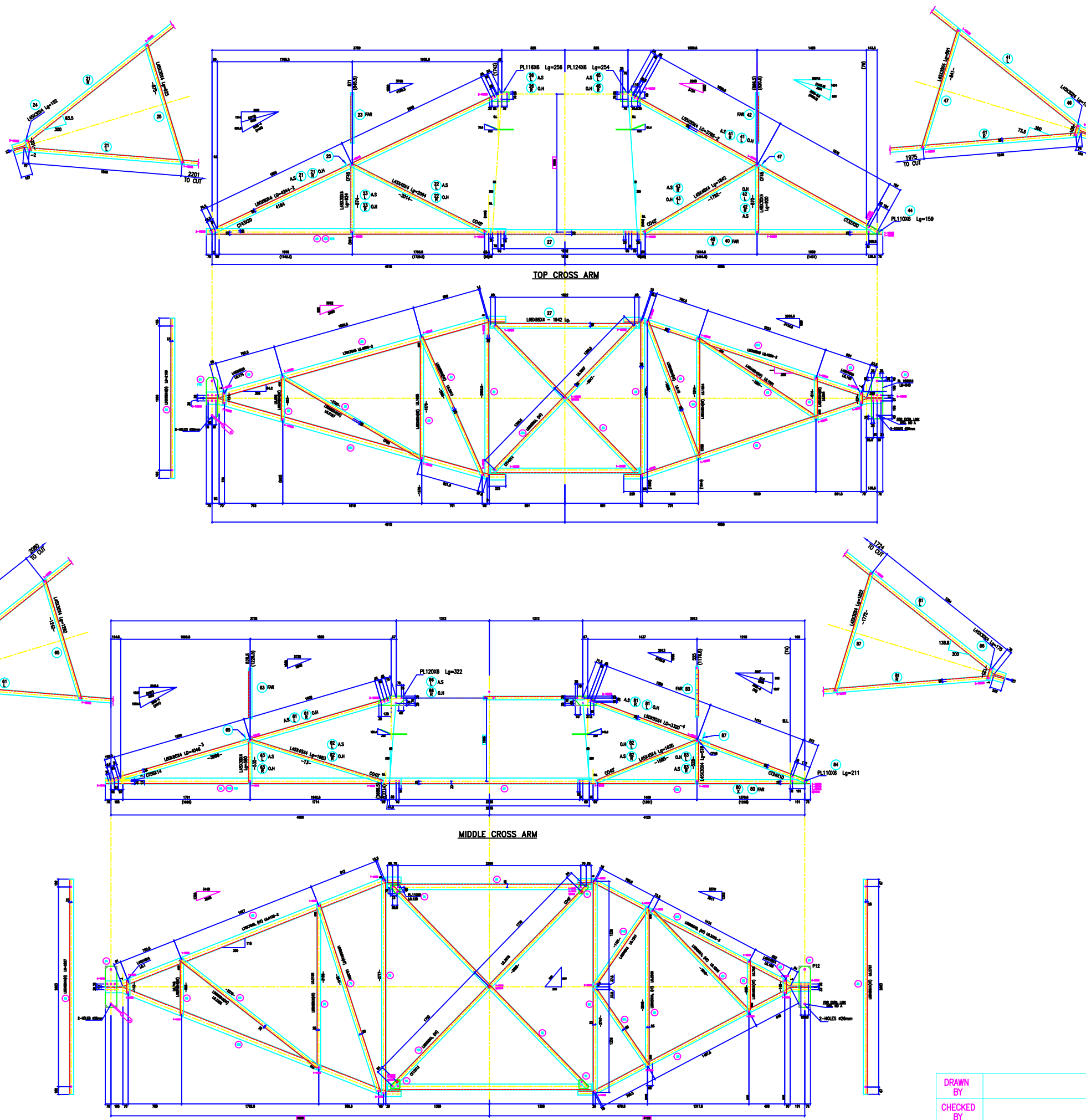


VERTICAL SLABS
 TAMB =
 ZAMB =
 FACE =
 DEVELOP =
IN FACE SLOPE
 TAMB =
 ZAMB =



BOLTS AND NUTS STATEMENT

TYPE	SIZE (IN MM)	QUANTITY
B	# 16X35	86
C	# 16X40	29
D	# 16X45	32
E	# 16X50	2
F	# 16X55	-
G	# 16X60	-
H	# 16X65	-
J	# 16X70	-
K	# 16X75	-
L	# 16X80	-
SPRING WASHERS		149
30 O.D PACKING WASHERS # 17.5 MM		
	5 mm	7
	6 mm	-
	8 mm	-
	10 mm	-
STEP BOLTS #16 mm X 175mm		-

- GENERAL NOTES:**
1. ALL DIMENSIONS ARE IN MM UNLESS OTHERWISE SPECIFIED.
 2. MILD STEEL BOLT AND NUTS TO IS 4026/15437/3.3 QTY
 3. ALL MILD STEEL BOLT AND NUTS ARE TO BE HOT DIP GALVANIZED AS PER ASTM A153
 4. ALL MILD STEEL SECTIONS SHALL BE OF TESTED QUALITY CONFORMING TO IS 8080 STANDARD
 5. GALVANIZATION OF TOWER MEMBERS AND FLAT WASHERS AS PER IS 2629
 6. ALL HOLES # 16.5mm FOR #16mm BOLTS
 7. ALL HOLES # 17.5mm FOR #16mm BOLTS
 8. ALL HOLES # 21.5mm FOR #20mm BOLTS
 9. ALL HOLES # 17.5mm FOR #16mm STEP BOLTS
 10. STANDARD SPRING WASHERS ARE TO BE USED UNDER EACH NUT
 11. ALL FABRICATED MEMBERS SHALL HAVE PROFS
 12. PROCATES MEMBERS BEING USED AS STEP BOLTS
 13. STEP BOLTS ARE TO BE PROVIDED ON TWO DIAGONALLY OPP. LEGS

MARK NO: 20 + 35, 40 + 53, 60 + 75, 80 +

BIHAR STATE POWER TRANSMISSION COMPANY LTD			
DRAWN BY		DESCRIPTION	220KV D/C TOWER TYPE "2DC" DETAIL OF TOP & MIDDLE CROSS ARMS
CHECKED BY		DRG NO	220KV-D/C-Struct-Top-Middle-X-36
APPROVED BY		SHEET NO 1-1	REV. 0

SCALE	-
--------------	---