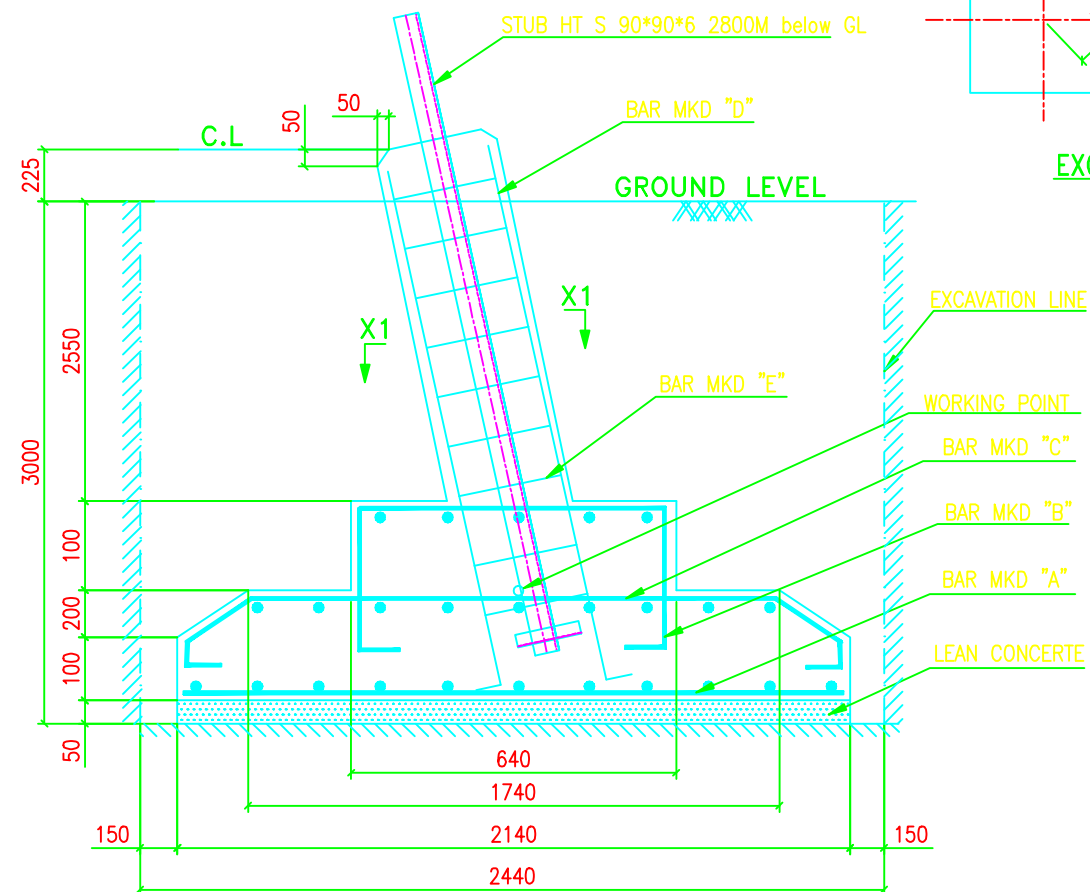
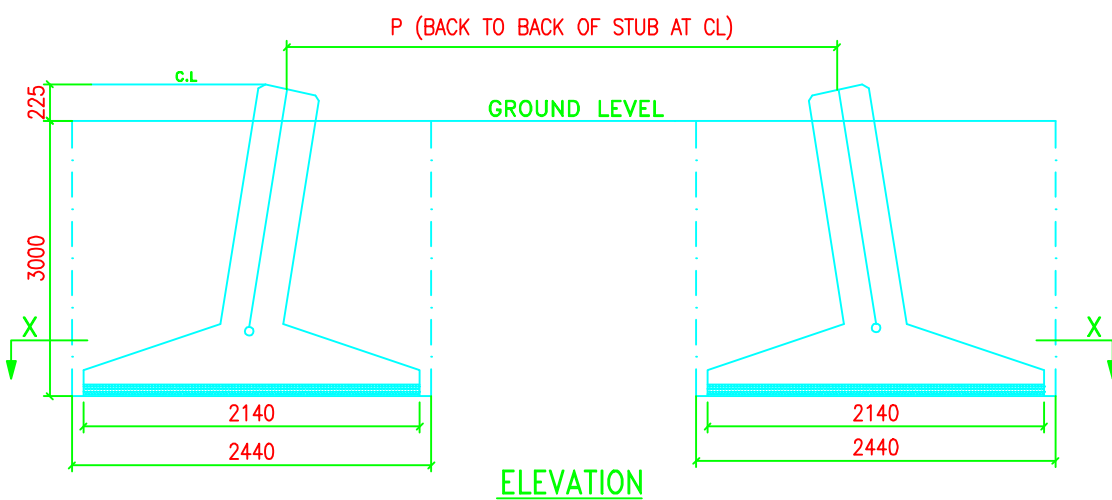


BAR BENDING SCHEDULE FOR FOUNDATION							
MARK No.	SHAPE OF THE BAR	DIA (mm)	LENGHT (mm)	Nos. Leg	Unit Wt. (Kg/m)	Wt./Leg. (Kg)	Wt./Tower (Kg)
A		10	2040	20	0.617	25.173	64.856
B		10	1260	6	0.617	18.952	10.76
C		10	2264	12	0.617	67.048	33.248
D		20	3350	8	2.466	66.088	264.352
E		8	1550	13	0.390	7.86	31.434
F		8	1166	13	0.390	5.912	23.646
TOTAL REINFORCEMENT							506.12



QUANTITIES/TOWER	
EXCAVATION VOLUME	= 71.443 Cu.M
CONCRETE (1:1.5:3)	= 7.265 Cu.M
CONCRETE (1:3:6)	= 0.916 Cu.M
REINFORCEMENT	= 506.12 Kgs.



TYPE OF TOWER : DA+0

TOWER SLOPE TAN ALPHA = 0.09760541						
LEVEL	STUB	CG OF STUB	P	M	N	CLEAT DETAILS
+0M	HT 90*90*6	24.2	4548	5041	7129	MS 80*80*6 NO. OF PAIRS 2 3 BOLTS/PAIR

NOTES:-

- DRAWING NOT TO SCALE.
- ALL DIMENSIONS ARE IN MM UNLESS OTHERWISE STATED.
- REINFORCED BAR USED Fe 415 CONFORMING TO IS 1786-1985
- MIX PROPERTIES CONFORMING TO IS 456-2000
- CONCRETE MIX USED GRADE M-20 (NOMINAL MIX 1:1.5:3)
LEAN CONCRETE MIX USED GRADE M-10 (NOMINAL MIX 1:3:6)
- WHENEVER NECESSARY TO CLEAR STUB AND CLEAT STIRRUPS AND BARS ARE TO BE ADJUSTED AT SITE.
- CLEAR COVER TO THE MAIN REINFORCEMENT BARS SHALL BE 50MM UNLESS OTHERWISE SPECIFIED.
- FOR CLEAT AND STUB TEMPLATE DETAILS PLEASE REFER RESPECTIVE STUB DRG.

THE FOUNDATION HAS BEEN DESIGNED FOR THE FOLLOWING PARAMETERS:	
TYPE OF SOIL	: PS
UNIT WEIGHT	: 1440/940 Kg/Cu.M
BEARING CAPACITY	: 13675 Kg/Sq.M
ANGLE OF REPOSE	: 30/15 Degrees
WATER TABLE	: 0.75M TO 1.5M BELOW G.L

BIHAR STATE POWER TRANSMISSION COMPANY LTD

DESCRIPTION	132KV D/C "DA+0" TOWER FOUNDATION DRAWING OF TYPE - PS		SCALE
DRWN BY			-
CHECKED BY			
APPROVED BY			
DRG NO	132KV-D/C-0-Fdn-PS-13	SHEET NO 1-1	REV. 0