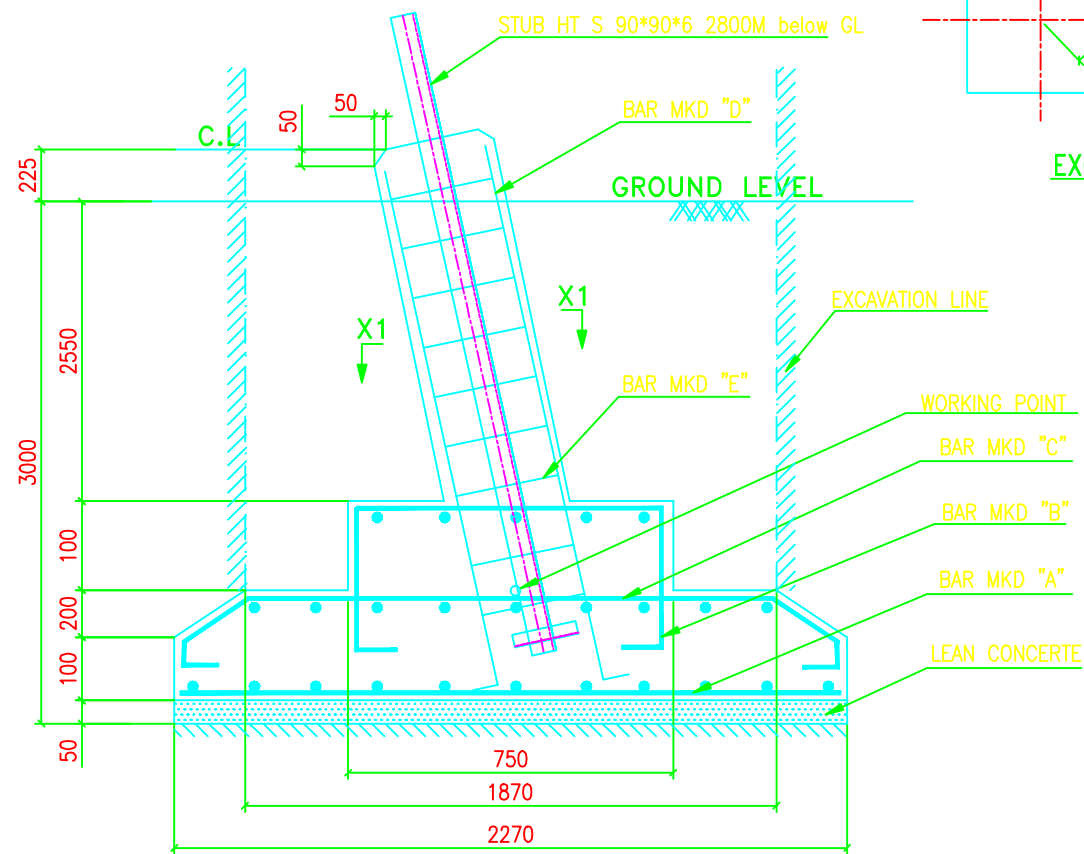


BAR BENDING SCHEDULE FOR FOUNDATION							
MARK No.	SHAPE OF THE BAR	DIA (mm)	LENGHT (mm)	Nos. Leg	Unit Wt. (Kg/m)	Wt./Leg. (Kg)	Wt./Tower (Kg)
A		10	2170	22	0.617	29.455	117.82
B		10	1390	6	0.617	5.145	20.58
C		10	2394	12	0.617	17.725	70.9
D		20	3350	8	2.466	66.088	264.352
E		8	1550	13	0.390	7.86	31.434
F		8	1166	13	0.390	5.912	23.646
TOTAL REINFORCEMENT							528.732

TYPE OF TOWER : DA+3/6/9

TOWER SLOPE TAN ALPHA = 0.09760541						
LEVEL	STUB	CG OF STUB	P	M	N	CLEAT DETAILS
+3M	HT 90*90*6	24.2	5134	5627	7958	MS 80*80*6 NO. OF PAIRS 2 3 BOLTS/PAIR
+6M	HT 90*90*6	24.2	5720	6213	8787	
+9M	HT 90*90*6	24.2	6305	6798	9614	

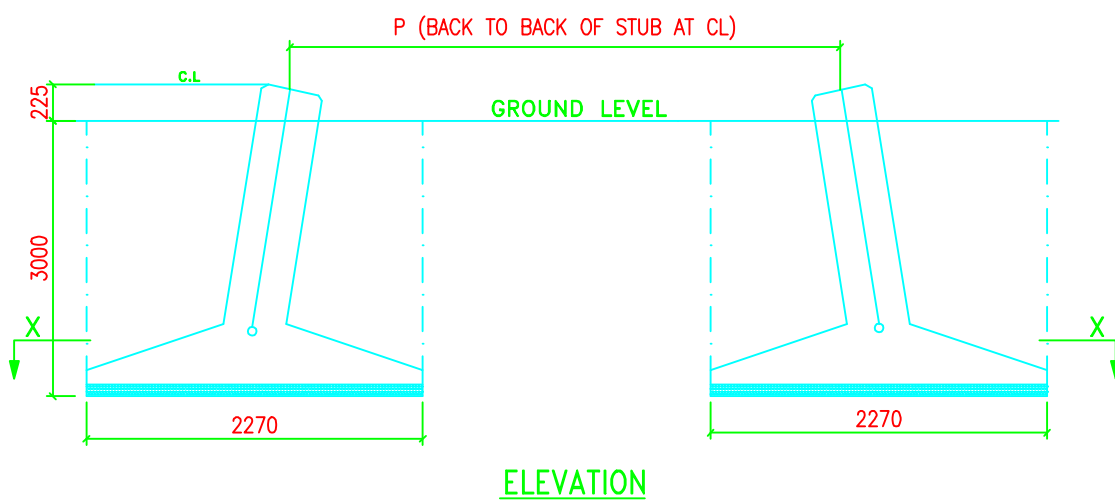


QUANTITIES/TOWER	
EXCAVATION VOLUME	= 43.597 Cu.M
CONCRETE (1:1.5:3)	= 7.972 Cu.M
CONCRETE (1:3:6)	= 1.031 Cu.M
REINFORCEMENT	= 528.73 Kgs.

NOTES:-

- DRAWING NOT TO SCALE.
- ALL DIMENSIONS ARE IN MM UNLESS OTHERWISE STATED.
- REINFORCED BAR USED Fe 415 CONFORMING TO IS 1786-1985
- MIX PROPERTIES CONFORMING TO IS 456-2000
- CONCRETE MIX USED GRADE M-20 (NOMINAL MIX 1:1.5:3)
LEAN CONCRETE MIX USED GRADE M-10 (NOMINAL MIX 1:3:6)
- WHENEVER NECESSARY TO CLEAR STUB AND CLEAT STIRRUPS AND BARS ARE TO BE ADJUSTED AT SITE.
- CLEAR COVER TO THE MAIN REINFORCEMENT BARS SHALL BE 50MM UNLESS OTHERWISE SPECIFIED.
- FOR CLEAT AND STUB TEMPLATE DETAILS PLEASE REFER RESPECTIVE STUB DRG.

THE FOUNDATION HAS BEEN DESIGNED FOR THE FOLLOWING PARAMETERS:
 TYPE OF SOIL : WFR
 UNIT WEIGHT : 1440/940 Kg/Cu.M
 BEARING CAPACITY : 62500 Kg/Sq.M
 ANGLE OF REPOSE : 20/10 Degrees
 WATER TABLE : 1.5M TO 3.0M BELOW G.L



BIHAR STATE POWER TRANSMISSION COMPANY LTD

DRAWN BY	DESCRIPTION	132KV D/C "DA+3/6/9" TOWER FOUNDATION DRAWING OF TYPE - WFR		SCALE
CHECKED BY	DRG NO	132KV-D/C-+3/6/9-Fdn-WFR-17	SHEET NO 1-1	-
APPROVED BY			REV.	0