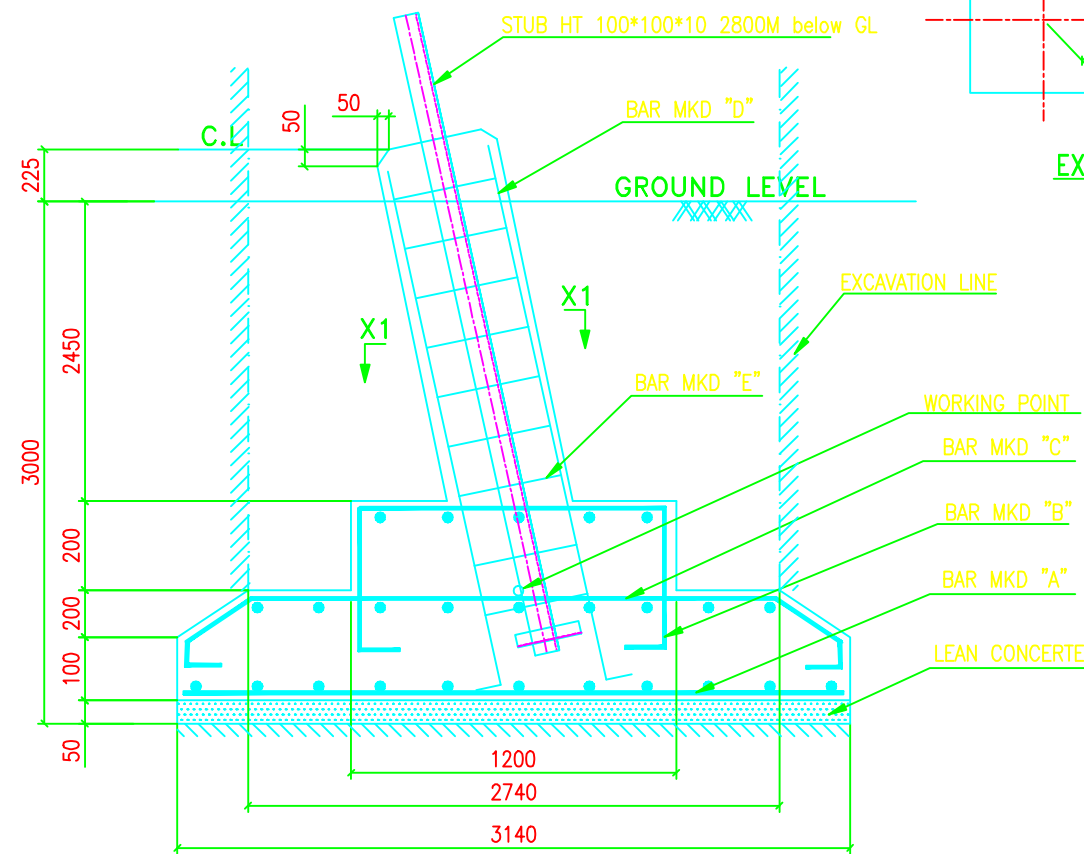


BAR BENDING SCHEDULE FOR FOUNDATION							
MARK No.	SHAPE OF THE BAR	DIA (mm)	LENGHT (mm)	Nos. Leg	Unit Wt. (Kg/m)	Wt./Leg. (Kg)	Wt./Tower (Kg)
A		10	3040	42	0.617	78.778	315.112
B		10	2040	10	0.617	12.586	50.344
C		10	3264	22	0.617	44.305	177.222
D		25	3350	8	3.854	103.287	413.148
E		8	1550	13	0.390	7.86	31.434
F		8	1170	13	0.390	5.932	23.727
TOTAL REINFORCEMENT							1010.985



QUANTITIES/TOWER	
EXCAVATION VOLUME	= 92.422 Cu.M
CONCRETE (1:1.5:3)	= 14.188 Cu.M
CONCRETE (1:3:6)	= 1.972 Cu.M
REINFORCEMENT	= 1010.985 Kgs.

TYPE OF TOWER : DB+0

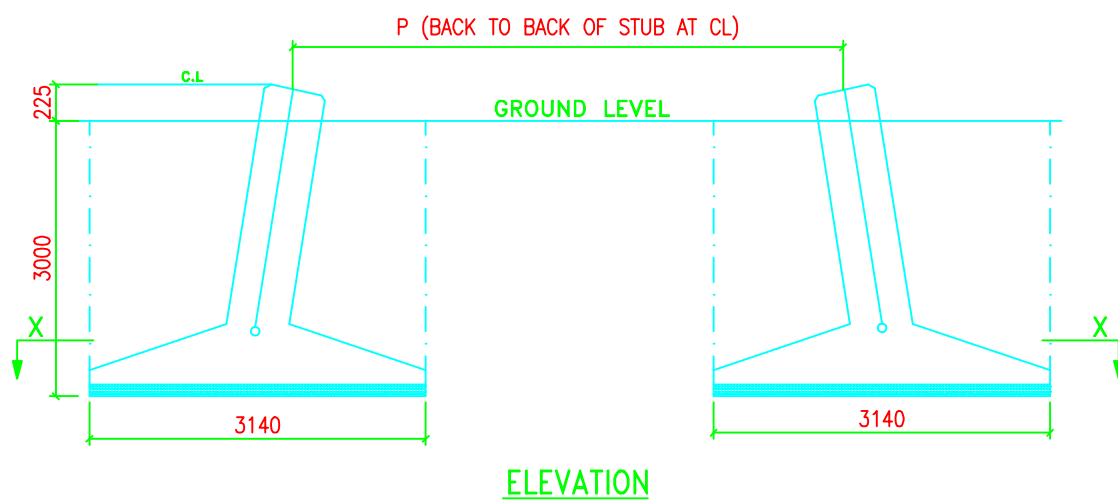
TOWER SLOPE TAN ALPHA = 0.142771

LEVEL	STUB	CG OF STUB	P	M	N	CLEAT DETAILS
+0M	HT 100*100*10	28.4	6057	6764	9566	MS 90*90*6 NO. OF PAIRS 2 4 BOLTS/PAIR

NOTES:-

- DRAWING NOT TO SCALE.
- ALL DIMENSIONS ARE IN MM UNLESS OTHERWISE STATED.
- REINFORCED BAR USED Fe 415 CONFORMING TO IS 1786-1985
- MIX PROPERTIES CONFORMING TO IS 456-2000
- CONCRETE MIX USED GRADE M-20 (NOMINAL MIX 1:1.5:3)
LEAN CONCRETE MIX USED GRADE M-10 (NOMINAL MIX 1:3:6)
- WHENEVER NECESSARY TO CLEAR STUB AND CLEAT STIRRUPS AND BARS ARE TO BE ADJUSTED AT SITE.
- CLEAR COVER TO THE MAIN REINFORCEMENT BARS SHALL BE 50MM UNLESS OTHERWISE SPECIFIED.
- FOR CLEAT AND STUB TEMPLATE DETAILS PLEASE REFER RESPECTIVE STUB DRG.

THE FOUNDATION HAS BEEN DESIGNED FOR THE FOLLOWING PARAMETERS:	
TYPE OF SOIL	: WFR
UNIT WEIGHT	: 1440/940 Kg/Cu.M
BEARING CAPACITY	: 62500 Kg/Sq.M
ANGLE OF REPOSE	: 20/10 Degrees
WATER TABLE	: 1.5M TO 3.0M BELOW G.L



BIHAR STATE POWER TRANSMISSION COMPANY LTD

DRAWN BY	DESCRIPTION	132KV D/C "DB+0" TOWER FOUNDATION DRAWING OF TYPE - WFR		SCALE
CHECKED BY				-
APPROVED BY	DRG NO	132KV-D/C-0-Fdn-WFR-27	SHEET NO 1-1	REV. 0