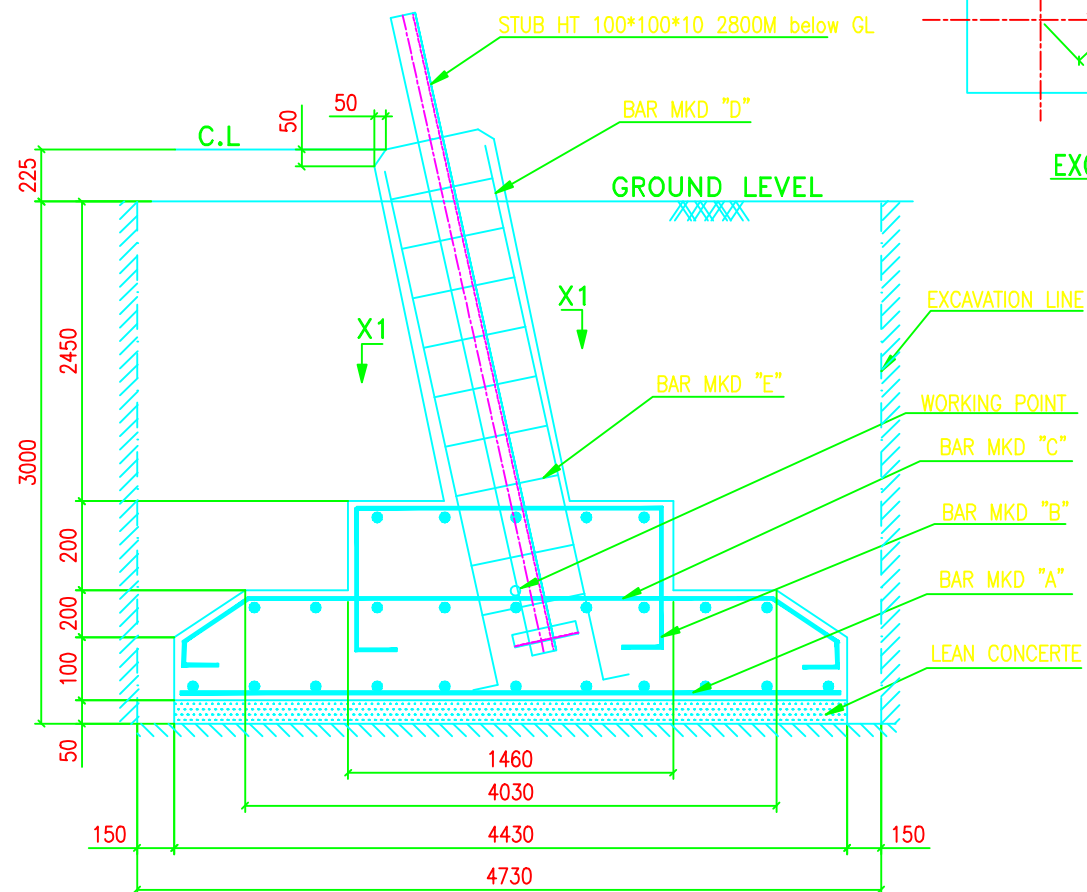


BAR BENDING SCHEDULE FOR FOUNDATION							
MARK No.	SHAPE OF THE BAR	DIA (mm)	LENGHT (mm)	Nos. Leg	Unit Wt. (Kg/m)	Wt./Leg. (Kg)	Wt./Tower (Kg)
A		10	4330	66	0.617	176.326	705.304
B		10	2300	14	0.617	19.867	79.468
C		10	4554	42	0.617	118.012	472.048
D		25	3350	8	3.854	103.287	413.148
E		8	1550	13	0.390	7.86	31.434
F		8	1170	13	0.390	5.932	23.727
TOTAL REINFORCEMENT							1725.13

TYPE OF TOWER : DB+3/6/9

TOWER SLOPE TAN ALPHA = 0.142771						
LEVEL	STUB	CG OF STUB	P	M	N	CLEAT DETAILS
+3M	HT 100*100*10	28.4	6914	7620	10776	MS 90*90*6 NO. OF PAIRS 2 4 BOLTS/PAIR
+6M	HT 100*100*10	28.4	7771	8477	11988	
+9M	HT 100*100*10	28.4	8627	9334	13200	

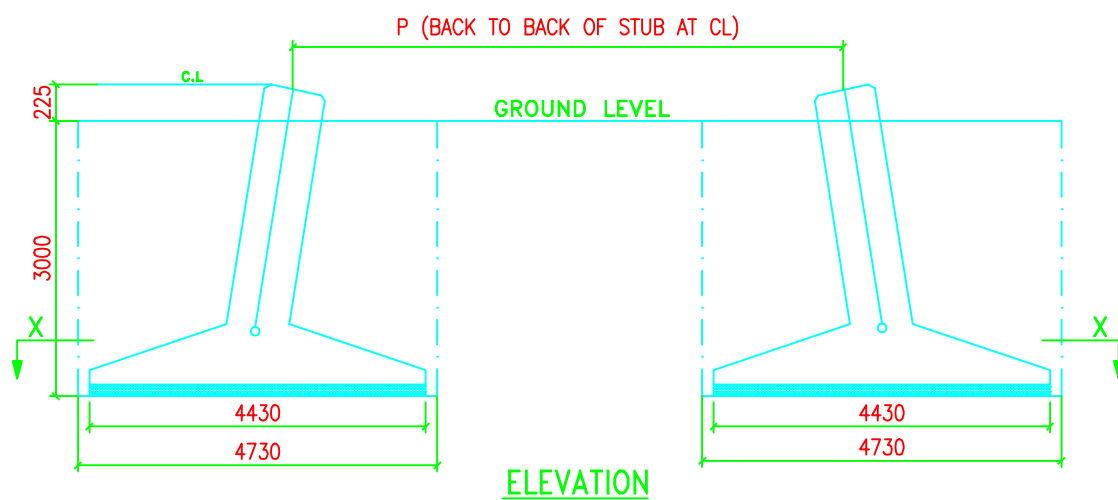


QUANTITIES/TOWER
EXCAVATION VOLUME = 268.475 Cu.M
CONCRETE ( 1:1.5:3 ) = 26.047 Cu.M
CONCRETE ( 1:3:6 ) = 3.925 Cu.M
REINFORCEMENT = 1725.13 Kgs.

**NOTES:-**

- DRAWING NOT TO SCALE.
- ALL DIMENSIONS ARE IN MM UNLESS OTHERWISE STATED.
- REINFORCED BAR USED Fe 415 CONFORMING TO IS 1786-1985
- MIX PROPERTIES CONFORMING TO IS 456-2000
- CONCRETE MIX USED GRADE M-20 (NOMINAL MIX 1:1.5:3)  
LEAN CONCRETE MIX USED GRADE M-10 (NOMINAL MIX 1:3:6)
- WHENEVER NECESSARY TO CLEAR STUB AND CLEAT STIRRUPS AND BARS ARE TO BE ADJUSTED AT SITE.
- CLEAR COVER TO THE MAIN REINFORCEMENT BARS SHALL BE 50MM UNLESS OTHERWISE SPECIFIED.
- FOR CLEAT AND STUB TEMPLATE DETAILS PLEASE REFER RESPECTIVE STUB DRG.

THE FOUNDATION HAS BEEN DESIGNED FOR THE FOLLOWING PARAMETERS:  
 TYPE OF SOIL : WBC  
 UNIT WEIGHT : 940 Kg/Cu.M  
 BEARING CAPACITY : 13675 Kg/Sq.M  
 ANGLE OF REPOSE : 0 Degrees  
 WATER TABLE : AT G.L



**BIHAR STATE POWER TRANSMISSION COMPANY LTD**

DESCRIPTION	132KV D/C "DB+3/6/9" TOWER FOUNDATION DRAWING OF TYPE - WBC		SCALE
DRWN BY			-
CHECKED BY			
APPROVED BY			
DRG NO	132KV-D/C-+3/6/9-Fdn-WBC-25	SHEET NO 1-1	REV. 0