

BAR BENDING SCHEDULE FOR FOUNDATION						
MARK No.	SHAPE OF THE BAR	DIA (mm)	LENGHT (mm)	Nos. Leg	Unit Wt. (kg/m)	Wt./Leg. (kg)
A		12	3440	50	0.888	152.736
B		12	2144	14	0.888	26.654
C		12	3664	28	0.888	91.102
D		20	3350	16	2.466	132.178
E		28	3350	4	4.834	64.775
F		8	1550	13	0.390	7.86
G		8	1110	26	0.390	31.434
TOTAL REINFORCEMENT						1710.304

TYPE OF TOWER : DD+3/6/9

TOWER SLOPE TAN ALPHA = 0.18403

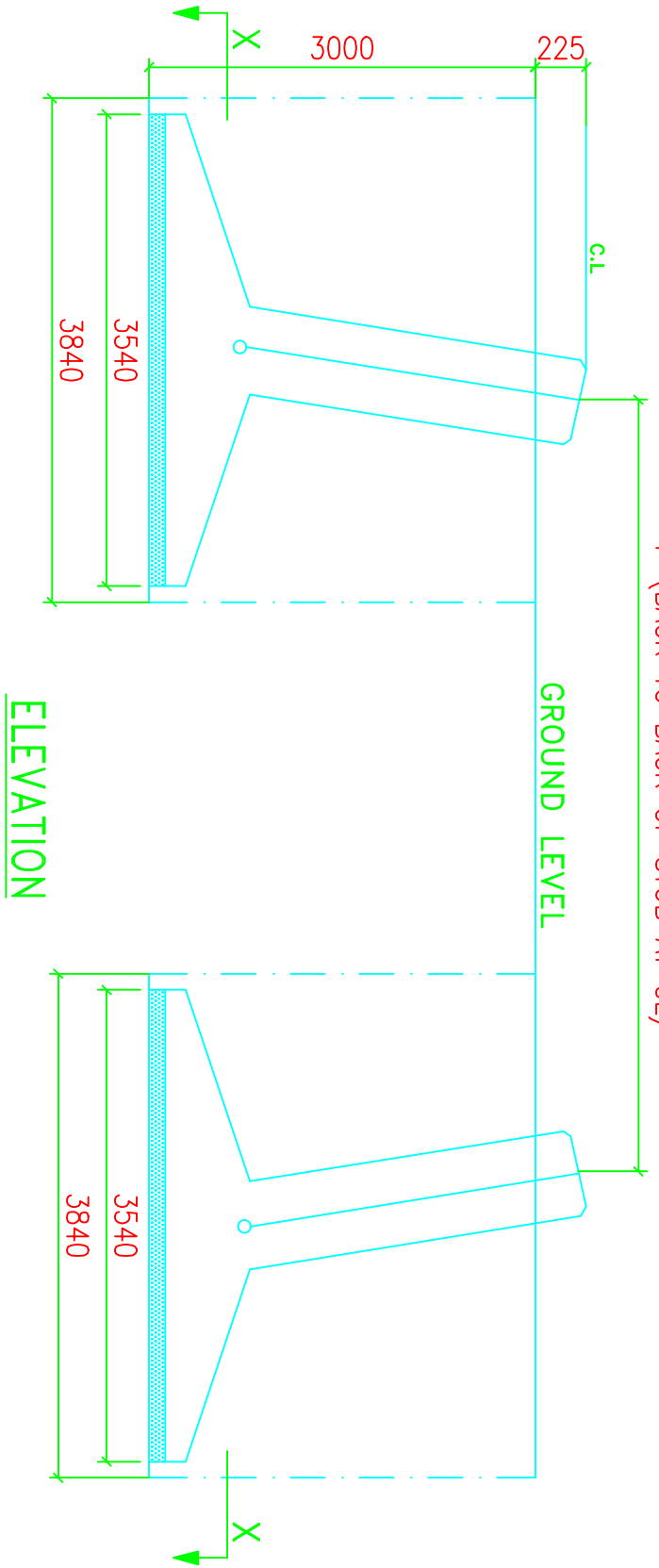
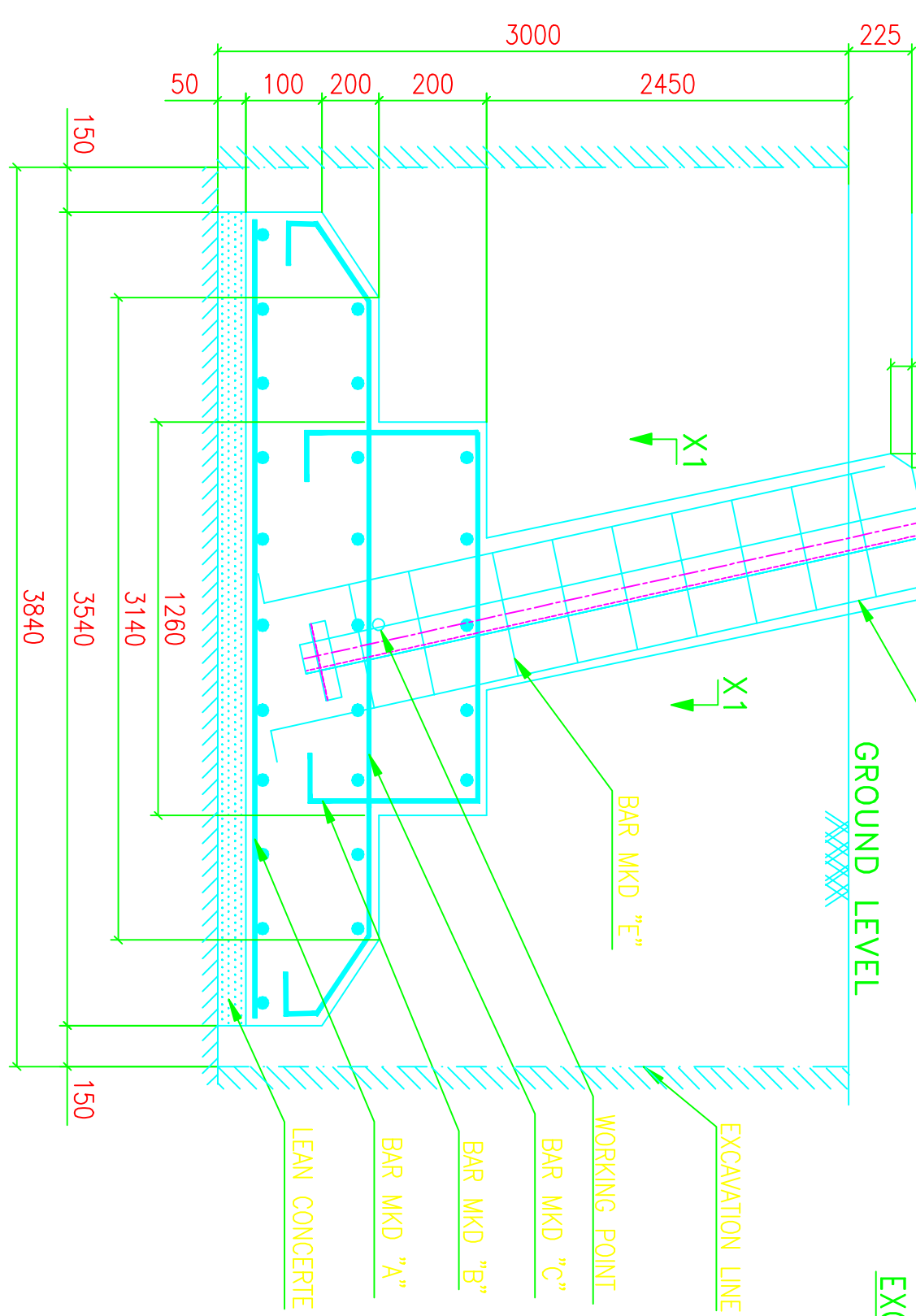
LEVEL	STUB	CG OF STUB	P	M	N	CLEAT DETAILS
+3M	HT130*130*10	35.9	9917	10089	14268	MS 90*90*6 NO.OF PAIRS 3 OUTER-290MM INNER-210MM 4 BOLTS/PAIR
+3M	HT130*130*10	35.9	10281	11193	15829	
+3M	HT130*130*10	35.9	11386	12297	17391	

QUANTITIES/TOWER	
EXCAVATION VOLUME	= 176.95 Cu.M
CONCRETE (1:1.5:3)	= 17.43 Cu.M
CONCRETE (1:3:6)	= 2.51 Cu.M
REINFORCEMENT	= 1710.304 Kgs.

NOTES:-

- DRAWING NOT TO SCALE.
- ALL DIMENSIONS ARE IN MM UNLESS OTHERWISE STATED.
- REINFORCED BAR USED Fe 415 CONFORMING TO IS 1786-1985
- MIX PROPERTIES CONFORMING TO IS 456-2000
- CONCRETE MIX USED GRADE M-20 (NOMINAL MIX 1:1.5:3)
- LEAN CONCRETE MIX USED GRADE M-10 (NOMINAL MIX 1:3:6)
- WHENEVER NECESSARY TO CLEAR STUB AND CLEAT STIRRUPS AND BARS ARE TO BE ADJUSTED AT SITE.
- CLEAR COVER TO THE MAIN REINFORCEMENT BARS SHALL BE 50MM UNLESS OTHERWISE SPECIFIED.
- FOR CLEAT AND STUB TEMPLATE DETAILS PLEASE REFER RESPECTIVE STUB DRG.

THE FOUNDATION HAS BEEN DESIGNED FOR THE FOLLOWING PARAMETERS:
 TYPE OF SOIL : WET
 UNIT WEIGHT : 1440/940 Kg/Cu.M
 BEARING CAPACITY : 13675 Kg/Sq.M
 ANGLE OF REPOSE : 30/15 Degrees
 WATER TABLE : 1.5M TO 3.0M BELOW G.L



DRAWN BY		DESCRIPTION	132KV D/C "DD+3/6/9" TOWER	SCALE	
CHECKED BY		FOUNDATION DRAWING OF TYPE - WBT			
APPROVED BY		DRG NO	132KV-D/C-+3/6/9-Fdn-Wet-42	SHEET NO	1-1
				REV.	0

BIHAR STATE POWER TRANSMISSION COMPANY LTD