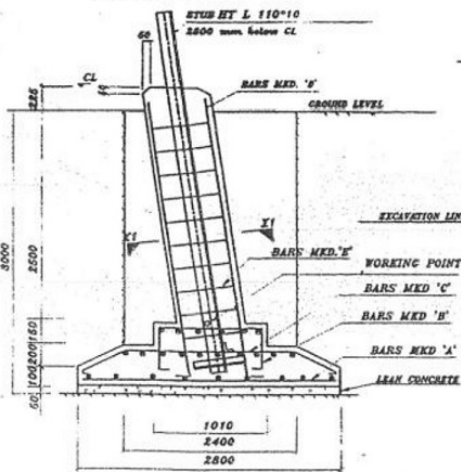


BAR TYPE	SKETCH	BAR DIA. (mm)	LENGTH (mm)	NOS./LEG	UNIT WEIGHT (KG/M)	WEIGHT PER LEG (KG.)	WEIGHT PER TOWER (KG.)
A		10	2700	44	0.617	73.300	293.200
B		10	1780	14	0.617	15.376	61.504
C		10	2924	22	0.617	39.690	158.760
D		25	3350	8	3.853	103.260	413.040
E		8	1750	11	0.395	7.603	30.412
F		8	1278	11	0.395	5.552	22.208
TOTAL WEIGHT (kgs) =							979.124



EXCAVATION	=	71.18 m ³
CONCRETE(1:1.5:3)	=	11.89 m ³
CONCRETE(1:3:6)	=	1.57 m ³
REINFORCEMENT	=	979.12 kgs

- NOTES:
- DRAWING NOT TO SCALE
 - ALL DIMENSIONS ARE IN MM UNLESS OTHERWISE STATED
 - REINFORCED BAR USED Fe 500 CONFORMING TO IS 1786-1985
 - MIX PROPERTIES CONFORMING TO IS 466-2000
 - CONCRETE MIX USED GRADE M 20 (NOMINAL MIX 1:1.5:3), LEAN CONCRETE MIX GRADE M10 (NOMINAL MIX 1:3:6).
 - STIRRUPS AND BARS ARE TO BE ADJUSTED AT SITE WHENEVER NECESSARY TO CLEAR STUB AND CLEAT
 - CLEAR COVER TO THE MAIN REINFORCEMENT BARS SHALL BE 50 MM UNLESS OTHERWISE SPECIFIED
 - ALL 6mm BARS ARE ME BARS.

TOWER SLOPE TAN ALPHA = 0.20035

LEVEL	STUB	CC OF STUB	P	M	N	CLEAT DETAILS
+0m	HT L 110*10	30.9	10285	11324	16015	NO 100*4
+3m	HT L 110*10	30.9	11520	12549	17747	NO. OF PAIRS & BOLTS / PAIR-4
+6m	HT L 110*10	30.9	12722	13761	19447	

THE FOUNDATION HAS BEEN DESIGNED FOR THE FOLLOWING PARAMETERS:

TYPE OF SOIL : DPR
 UNIT WEIGHT: 1440 Kg/Cu.M
 BEARING CAPACITY: 62500 kg/m²
 ANGLE OF REPOSE : 20 Degree
 WATER TABLE : 3 M FROM CL

BIHAR STATE POWER TRANSMISSION COMPANY LTD.

DRAWN BY	DESCRIPTION
CHECKED BY	220KV D/C "DC-036" TOWER FOUNDATION DRAWING OF TYPE DFR
APPROVED BY	DRO. NO. 220KV-D/C-+0/3/6-Fdn-DFR-36