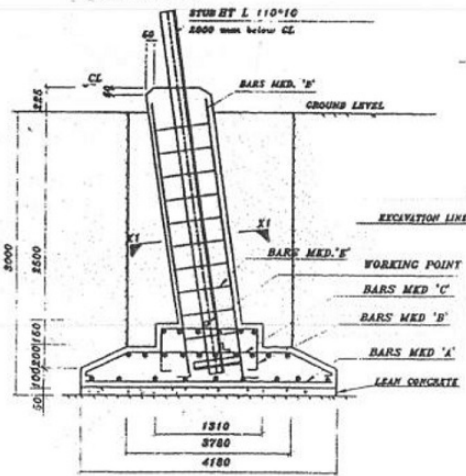


BAR TYPE	SKETCH	BAR DIA. (mm)	LENGTH (mm)	NO./LEG	UNIT WEIGHT (KG/M)	WEIGHT PER LEG (KG.)	WEIGHT PER TOWER (KG.)
A		10	4080	70	0.617	176.215	704.860
B		10	2080	18	0.617	23.100	82.400
C		10	4304	38	0.617	100.912	403.648
D		25	3350	8	3.853	103.260	413.040
E		8	1750	11	0.395	7.603	30.412
F		8	1278	11	0.395	5.552	22.208
TOTAL WEIGHT (kgs) =						1666.568	

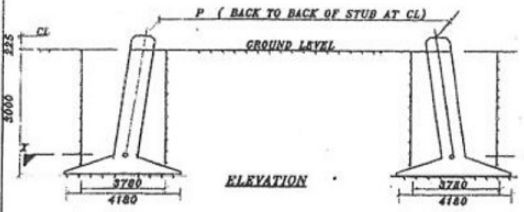


EXCAVATION	=	174.62 m ³
CONCRETE (1:1.5:3)	=	23.49 m ³
CONCRETE (1:3:6)	=	3.49 m ³
REINFORCEMENT	=	1666.57 kgs

- NOTES:
- DRAWING NOT TO SCALE
 - ALL DIMENSIONS ARE IN MM UNLESS OTHERWISE STATED
 - REINFORCED BAR USED F_y 600 CONFORMING TO IS 1786-1985
 - MIX PROPERTIES CONFORMING TO IS 456-2000
 - CONCRETE MIX USED GRADE M 20 (NOMINAL MIX 1:1.5:3). LEAN-CONCRETE MIX GRADE M10 (NOMINAL MIX 1:3:6).
 - STIRRUPS AND BARS ARE TO BE ADJUSTED AT SITE WHENEVER NECESSARY TO CLEAR STUB AND CLEAT
 - CLEAR COVER TO THE MAIN REINFORCEMENT BARS SHALL BE 50 MM UNLESS OTHERWISE SPECIFIED
 - ALL ϕ mm BARS ARE MS BARS.

LEVEL	STUB	CC OF STUB	P	M	N	CLEAT DETAILS
+0m	HT L 110*10	30.9	10285	11324	16015	MS 100% NO. OF PAIRS & BOLTS / PAIR
+5m	HT L 110*10	30.9	11620	12549	17747	
+6m	HT L 110*10	30.9	12722	13751	19447	

THE FOUNDATION HAS BEEN DESIGNED FOR THE FOLLOWING PARAMETERS:
 TYPE OF SOIL : SFR
 UNIT WEIGHT: 1440 / 940 Kg/Cu.M
 BEARING CAPACITY: 62500 kg/m²
 ANGLE OF REPOSE 20 / 10 Degree
 WATER TABLE : 0 TO 1.5M FROM CL



FOR		BIHAR STATE POWER TRANSMISSION COMPANY LTD.	
DRAWN BY		DESCRIPTION	220KV D/C "DC-036" TOWER FOUNDATION DRAWING OF TYPE SFR
CHECKED BY		DRG. NO.	220KV-D/C-+0/3/6-Fdn-SFR-38
APPROVED BY			