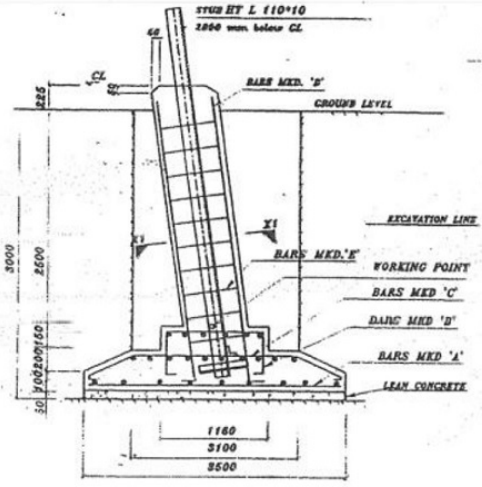


**BAR BENDING SCHEDULE FOR FOUNDATION**

BAR TYPE	SKETCH	BAR DIA. (mm)	LENGTH (mm)	NO. OF LFC	UNIT WEIGHT (KG/M)	WEIGHT PER LFC (KG.)	WEIGHT PER TOWER (KG.)
A		10	3400	58	0.617	121.672	486.688
B		10	1930	16	0.617	19.053	76.212
C		10	3624	30	0.617	67.080	268.320
D		25	3350	8	3.853	103.260	419.040
E		8	1750	11	0.395	7.603	30.412
F		8	1278	11	0.395	5.552	22.208
<b>TOTAL WEIGHT (kgs) = 1296.880</b>							



**QUANTITIES / TOWER**

EXCAVATION	=	117.94 m <sup>3</sup>
CONCRETE (1:1.5:3)	=	17.16 m <sup>3</sup>
CONCRETE (1:3:6)	=	2.45 m <sup>3</sup>
REINFORCEMENT	=	1296.88 kgs

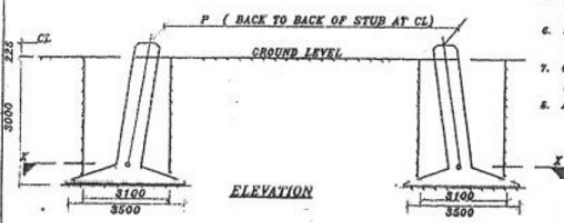
- NOTES:**
- DRAWING NOT TO SCALE
  - ALL DIMENSIONS ARE IN MM UNLESS OTHERWISE STATED
  - REINFORCED BAR USED Fe 600 CONFORMING TO IS 1786-1985
  - MIX PROPERTIES CONFORMING TO IS 456-2000
  - CONCRETE MIX USED GRADE M 20 (NOMINAL MIX 1:1.5:3), LEAN CONCRETE MIX GRADE M10 (NOMINAL MIX 1:3:6). NECESSARY TO CLEAR STUB AND CLEAT
  - STIRRUPS AND BARS ARE TO BE ADJUSTED AT SITE WHENEVER NECESSARY TO CLEAR STUB AND CLEAT
  - CLEAR COVER TO THE MAIN REINFORCEMENT BARS SHALL BE 60 MM UNLESS OTHERWISE SPECIFIED
  - ALL 6mm BARS ARE MS BARS.

TOWER SLOPE TAN ALPHA = 0.20035

**EXCAVATION PLAN DETAILS**

LEVEL	STUB	CC OF STUB	P	M	N	CLEAT DETAILS
+0m	HT L 110*10	30.9	10295	11324	16015	MS 180*4
+3m	HT L 110*10	30.9	11520	12548	17747	BOLTS / PINS 4"
+6m	HT L 110*10	30.8	12722	13751	18447	

THE FOUNDATION HAS BEEN DESIGNED FOR THE FOLLOWING PARAMETERS:  
 TYPE OF SOIL : WFR  
 UNIT WEIGHT: 1440 / 940 Kg/Cu.M  
 BEARING CAPACITY: 62500 kg/m<sup>2</sup>  
 ANGLE OF REPOSE 20 / 10 Degree  
 WATER TABLE : 1.5 TO 3 M FROM CL



FOR BIHAR STATE POWER TRANSMISSION COMPANY LTD.

DRAWN BY		DESCRIPTION	220KV D/C "DC+036" TOWER FOUNDATION STRUCTURE OF TYPE WFR
CHECKED BY		DRG. NO.	220KV-D/C-0/3/6-Fdn-WFR-37
APPROVED BY			