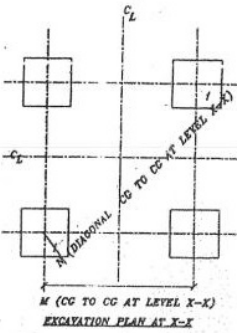
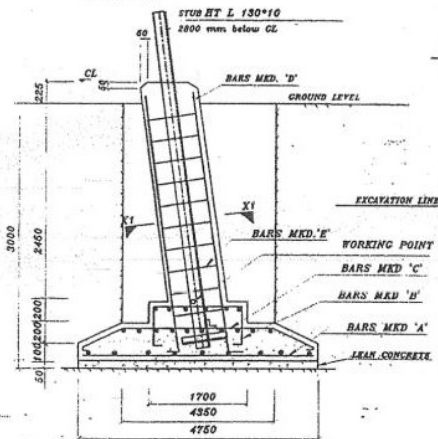


SECTION XI - XI



M (CG TO CG AT LEVEL X-X)
EXCAVATION PLAN AT X-X

BAR BENDING SCHEDULE FOR FOUNDATION							
BAR TYPE	SKETCH	BAR DIA. (mm)	LENGTH (mm)	NO. / LEG	UNIT WEIGHT (KG/M)	WEIGHT PER LEG (KG.)	WEIGHT PER TOWER (KG.)
A		12	4650	60	0.888	247.752	991.008
B		12	2564	18	0.888	40.983	163.932
C		12	4250	34	0.888	147.156	588.624
D		25	3350	8	3.853	103.260	413.040
E		8	2070	11	0.395	8.994	35.976
F		8	1506	11	0.395	6.543	26.172
TOTAL WEIGHT (kgs) =					2218.752		

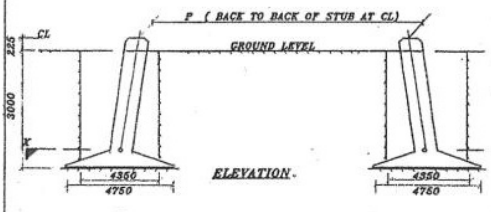
QUANTITIES / TOWER	
EXCAVATION	= 230.69 m ³
CONCRETE (1:1.5:3)	= 31.51 m ³
CONCRETE (1:3:6)	= 4.51 m ³
REINFORCEMENT	= 2218.75 kgs

- NOTES:
- DRAWING NOT TO SCALE
 - ALL DIMENSIONS ARE IN MM UNLESS OTHERWISE STATED
 - REINFORCED BAR USED F₆₀₀ CONFORMING TO IS 1786-1985
 - MIX PROPERTIES CONFORMING TO IS 456-2000
 - CONCRETE MIX USED GRADE M 20 (NOMINAL MIX 1:1.5:3), LEAN CONCRETE MIX GRADE M10 (NOMINAL MIX 1:3:6)
 - STIRRUPS AND BARS ARE TO BE ADJUSTED AT SITE WHENEVER NECESSARY TO CLEAR STUB AND CLEAR
 - CLEAR COVER TO THE MAIN REINFORCEMENT BARS SHALL BE 60 MM UNLESS OTHERWISE SPECIFIED
 - ALL 8mm BARS ARE MS BARS.

TOWER SLOPE TAN ALPHA = 0.245256

EXCAVATION PLAN DETAILS						
LEVEL	STUB	CG OF STUB	P	M	N	CLEAR DETAILS
+0m	HT L 150*10	55.9	12113	13351	18881	HT 150*10 NO. OF PILES & DOLTS / PILE
+3m	HT L 130*10	55.9	18584	14822	20952	
+6m	HT L 130*10	55.9	15056	16294	23043	

THE FOUNDATION HAS BEEN DESIGNED FOR THE FOLLOWING PARAMETERS:
 TYPE OF SOIL: SFR
 UNIT WEIGHT: 1440 / 840 Kg/Cu.M
 BEARING CAPACITY: 62500 Kg/m²
 ANGLE OF REPOSE 20 / 10 Degree
 WATER TABLE : 0 TO 1.5M FROM CL



ELEVATION

FOR BIHAR STATE POWER TRANSMISSION COMPANY LTD.

DRAWN BY	DESCRIPTION	220KV D/C "DD+036" TOWER FOUNDATION DRAWING OF TYPE SFR
CHECKED BY		
APPROVED BY	DRG. NO.	220KV-D/C-+0/3/6-Fdn-SFR-48