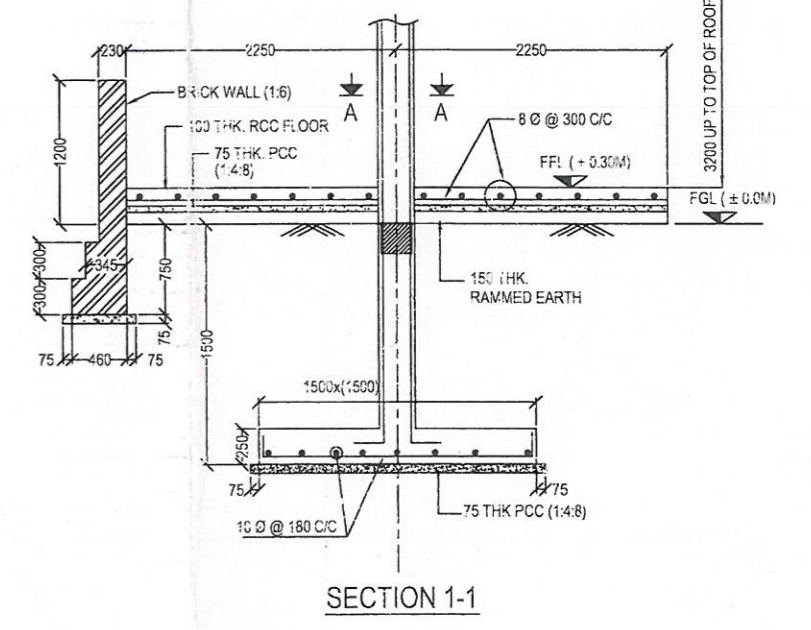
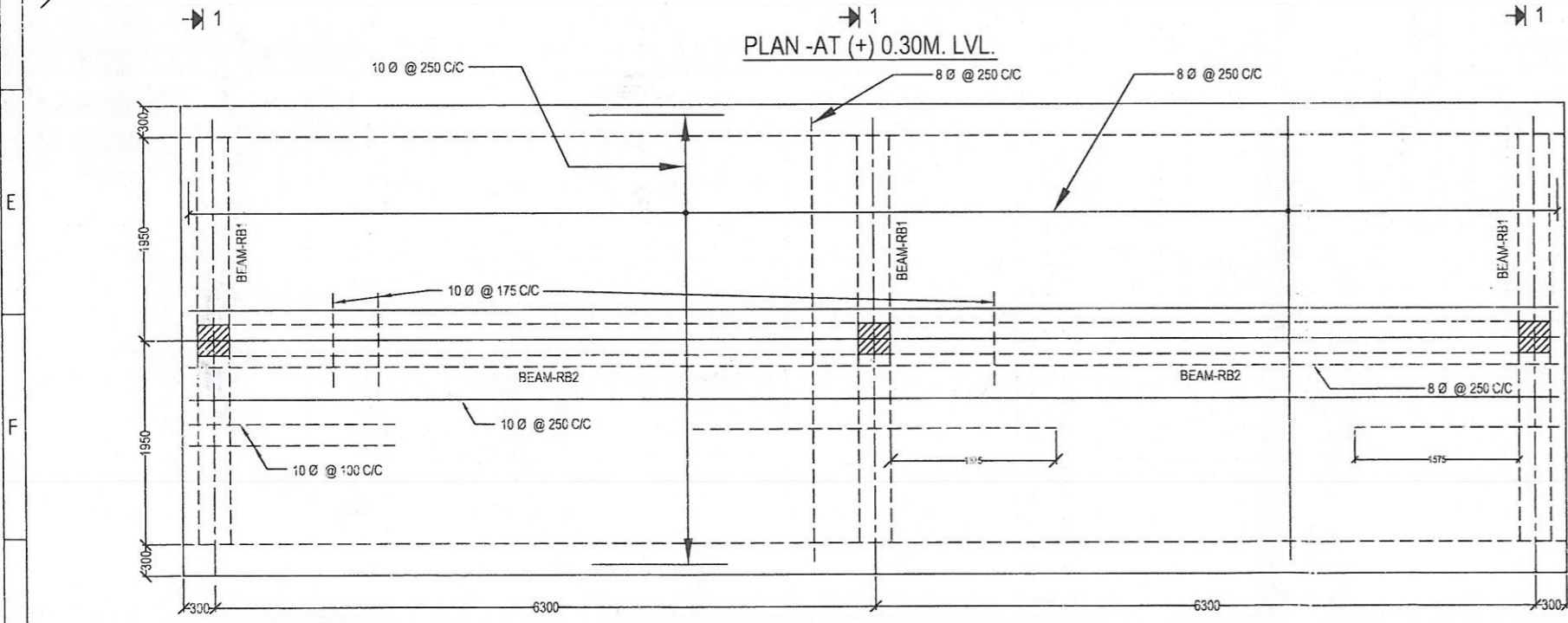


This drawing is approved subject to overall responsibility of the contractor in terms of contract agreement. CA turn key for the work.

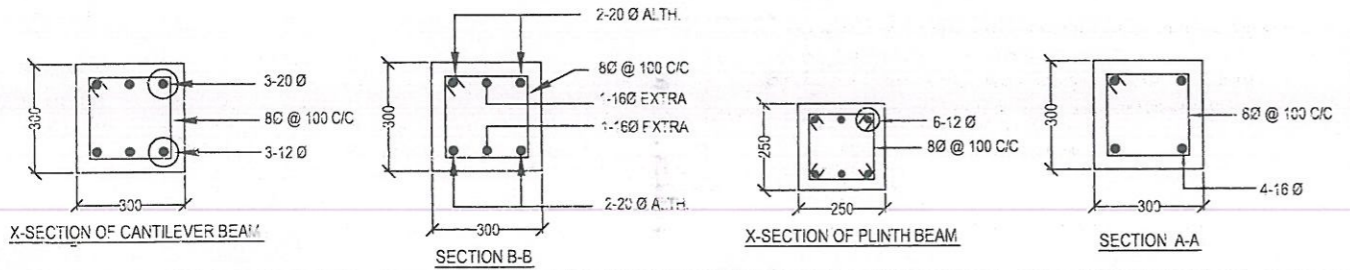
Chief Engineer (Civil), BSPTCL



PLAN AT ROOF LVL. (WITH REINFORCEMENT)
(TOP OF ROOF (+) 3.5M/SLAB THK. 125mm)

--- TOP REINFORCEMENT
— BOTTOM REINFORCEMENT

- NOTES**
- 1 ALL DIMENSIONS ARE IN mm & LEVELS IN METER UNLESS OTHERWISE SPECIFIED
 - 2 LOCATION TO BE ASCERTAINED FROM APPD. OGA DRG
 - 3 GRADE OF CONCRETE SHALL BE M20 (1:1.5:3), CONFORMING TO IS 456-2000
 - 4 REINFORCEMENT STEEL SHALL BE HIGH STRENGTH DEFORMED BARS OF GRADE Fe-415, CONFORMING TO IS 1786-1985
 - 5 CLEAR COVER TO REINFORCEMENT SHALL BE -
a) FOOTING - 50mm
b) COLUMN - 40mm
c) PEDESTAL - 40mm
 - 6 LAP LENGTH SHALL BE FIFTY TIMES THE DIAMETER OF BAR (M_n) (Ld)



Assistant Engineer (Civil), BSPTCL

Executive Engineer (Civil), B.S.P.T.C.L.

Superintending Engineer (Civil), BSPTCL

		BIHAR STATE POWER TRANSMISSION CO. LTD.	
		STANDARD GA/RC DETAIL - CAR PARKING SHED	
DRG. TITLE	STANDARD GA/RC DETAIL - CAR PARKING SHED		
DRG. NO.	BSPTCL-SUBS-SWYD-C-STD-DRG-CAR PARKING SHED STRUCTURE		
SCALE	N.T.S	SHEET	1 OF 1