

### MOUNTING DETAILS


NOTE :-

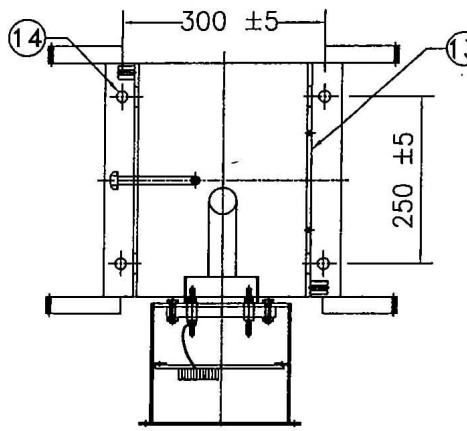
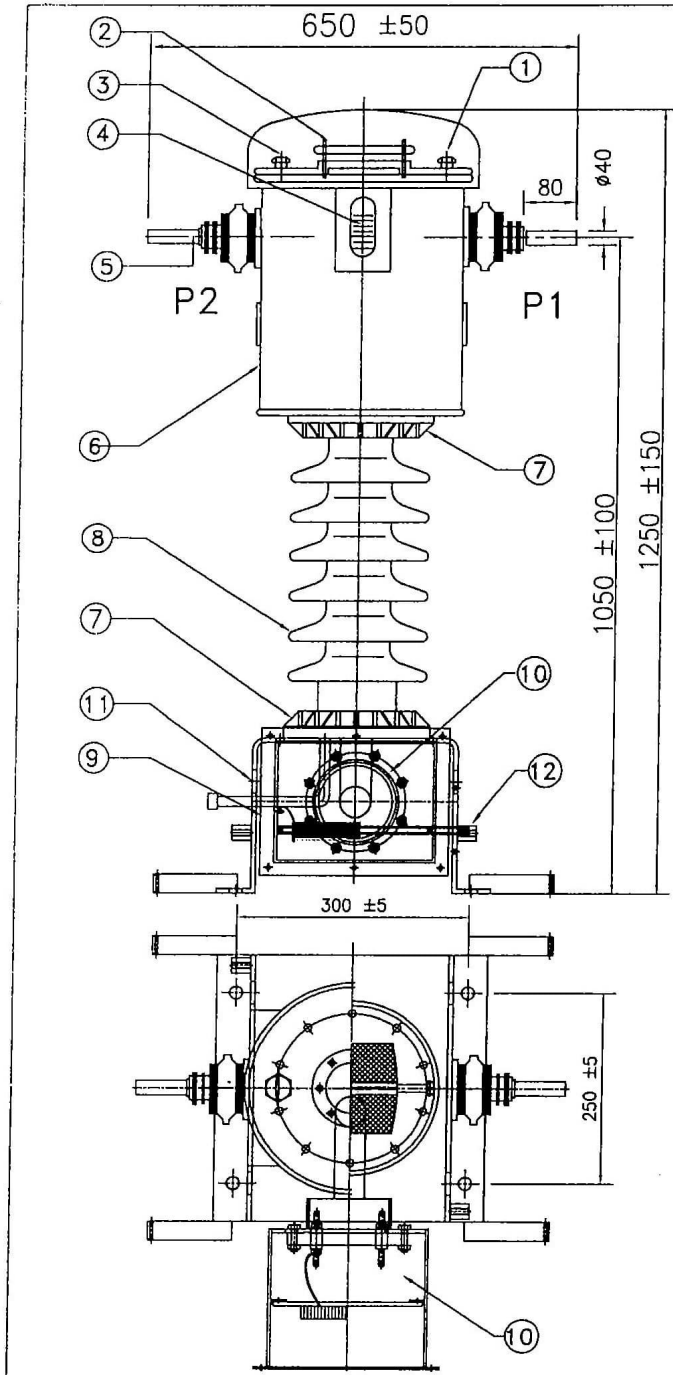
Make of Bushing : IEC/WSI/MODERN/BHEL/ABIL

ALL FERROUS PARTS EXPOSED TO THE ATMOSPHERE SHALL BE HOT DIP GALVANISED AND THEN EPOXY PAINTED HAVING LIGHT GREY CONFIRMING TO SHADE 631 OF IS5

Total Weight :- 380Kgs (Approx.)  
 Oil Quantity :- 100 Lts (Approx.)  
 Total Creepage :- 3625 mm(Min)

S.No.	DESCRIPTION	MATERIAL	QTY
1	NITROGEN VALVE	BRASS	1
2	PRESSURE RELEASE DEVICE	AL+BAKELITE	1
3	OIL FILLING PLUG	MS	1
4	OIL LEVEL INDICATOR (With Min/Normal/Max Marking)	AL+GLASS/ POLY CARBONATE	1
5	PRIMARY TERMINAL	COPPER	2
6	OIL TANK WITH COVER	MS	1
7	BUSHING CLAMP	GI/CI	2
8	BUSHING	H V PORCELAIN	1
9	BASE	MS	1
10	SECONDARY TERMINAL BOX	MS	1
11	LIFTING HOOK	MS	4
12	EARTHING FLAT	MS	2
13	NAME AND RATING PLATE	ALU.ANODISED	1
14	MOUNTING HOLE,16mm ±2	MS	4
15	OIL DRAIN PLUG & PIPE	MS	1

CUSTOMER	 BIHAR STATE POWER TRANSMISSION CO. LTD.		
<small>THIS DRAWING IS THE PROPERTY OF M/S TECHNICAL ELECTRIC &amp; ENGG. CO. LTD. AND NOT TO BE COPIED OR USED WITHOUT THEIR PRIOR PERMISSION.</small>			
SUPPLY LOI NO.			
ERECTION LOI NO.			
PROJECT			
SUBSTATION			
VENDORS NAME			
DRG. TITLE	GENERAL ARRANGEMENT DWG. FOR 132 KV CT (120%)		
DRG. NO.	132-KV-CT-120-GA		
SCALE:	NTS	JOB NO:	SHEET



**MOUNTING DETAIL**

S.No.	DESCRIPTION	MATERIAL	QTY
1	NITROGEN VALVE	BRASS	1
2	PRESSURE RELEASE DEVICE	AL+BAKELITE	1
3	OIL FILLING PLUG	MS	1
4	OIL LEVEL INDICATOR	AL+GLASS/ POLY CARBONATE	1
5	PRIMARY TERMINAL	TINNED COPPER	2
6	OIL TANK WITH COVER	MS	1
7	BUSHING CLAMP(CEMENTED)	GI/CI	2
8	BUSHING	H V PORCELAIN	1
9	BASE	MS	1
10	SECONDARY TERMINAL BOX	MS	1
11	LIFTING HOLE	MS	4
12	EARTHING TERMINAL	SS	2
13	NAME AND RATING PLATE	ALU. ANODISED	1
14	MOUNTING HOLE 17 $\phi$	MS	4

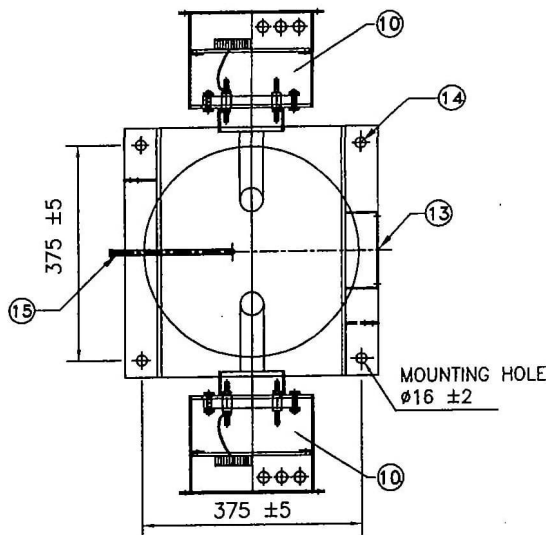
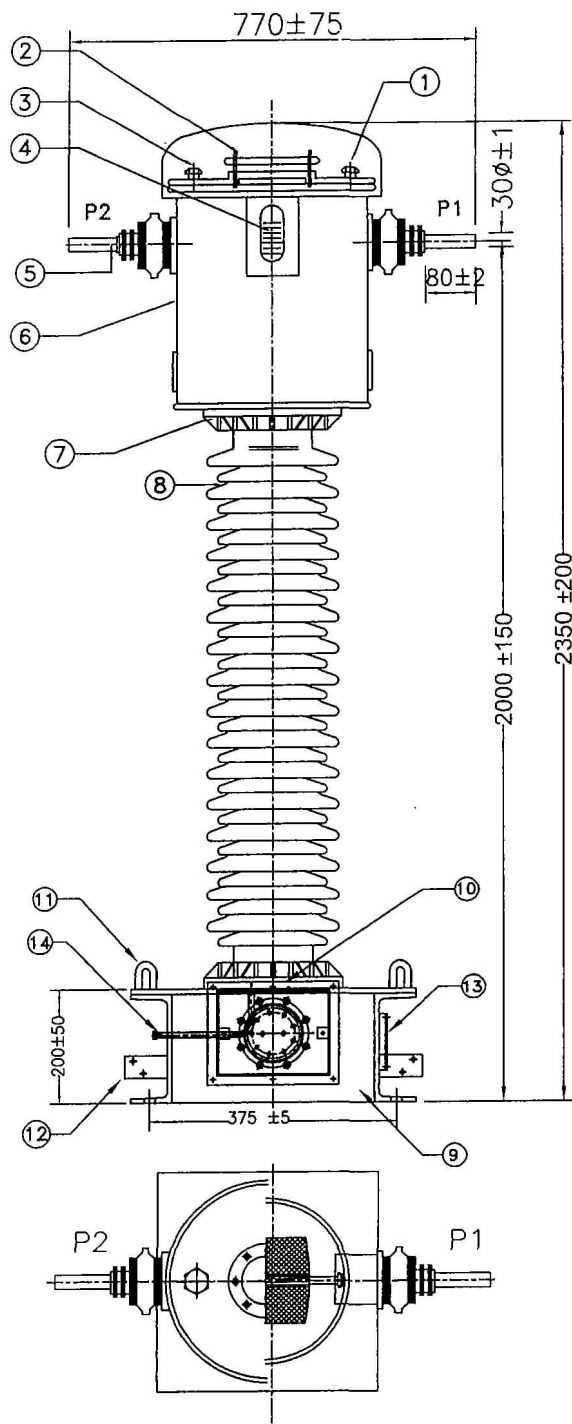
WEIGHT OF OIL 25 LITRES APPROX.  
 TOTAL WEIGHT 125 Kgs APPROX.  
 TOTAL CREEPAGE DISTANCE 900 mm (Min)

NOTE :-

1. Make of Bushing : IEC/WSI/ABIL/MODERN/BHEL/CJI  
 ALL FERROUS PARTS EXPOSED TO THE ATMOSPHERE SHALL  
 BE HOT DIP GALVANISED AND THEN EPOXY PAINTED HAVING  
 LIGHT GREY CONFIRMING TO SHADE 631 OF IS5

TYPE OF CT: LIVE TANK TYPE

CUSTOMER	BIHAR STATE POWER TRANSMISSION CO. LTD		
<small>THIS DRAWING IS THE PROPERTY OF M/S TECHNICAL ELECTRICAL ENGINEERS LTD AND NOT TO BE COPIED OR USED WITHOUT THEIR WRITTEN PERMISSION.</small>			
SUPPLY LOI NO.			
ERECTION LOI NO.			
PROJECT			
SUBSTATION			
VENDORS NAME			
DRG. TITLE	GENERAL ARRANGEMENT DRAWING FOR 33 KV CT (120%)		
DRG. NO.	132-KV-CT-120-GA		
SCALE:	NTS	JOB NO:	SHEET



### MOUNTING DETAILS

NOTE :-

Make of Bushing : IEC/WSI/MODERN/BHEL/ABIL

ALL FERROUS PARTS EXPOSED TO THE ATMOSPHERE SHALL BE HOT DIP GALVANISED AND THEN EPOXY PAINTED HAVING LIGHT GREY CONFIRMING TO SHADE 631 OF IS5

Total Weight :- 420Kgs (Approx.)

Oil Quantity :- 160 Lts (Approx.)

Total Creepage :- 3625 mm (Min)

S.No.	DESCRIPTION	MATERIAL	QTY
1	NITROGEN VALVE	BRASS	1
2	PRESSURE RELEASE DEVICE	AL+BAKELITE	1
3	OIL FILLING PLUG	MS	1
4	OIL LEVEL INDICATOR (With Min/Normal/Max Marking)	AL+GLASS/ POLY CARBONATE	1
5	PRIMARY TERMINAL	COPPER	2
6	OIL TANK WITH COVER	MS	1
7	BUSHING CLAMP	GI/CI	2
8	BUSHING	H V PORCELAIN	1
9	BASE	MS	1
10	SECONDARY TERMINAL BOX	MS	2
11	LIFTING HOOK	MS	4
12	EARTHING FLAT	MS	2
13	NAME AND RATING PLATE	ALU.ANODISED	1
14	MOUNTING HOLE, 16mm $\pm 2$	MS	4
15	OIL DRAIN PLUG & PIPE	MS	1

CUSTOMER	BIHAR STATE POWER TRANSMISSION CO. LTD		
<small>THIS DRAWING IS THE PROPERTY OF M/S TECHNICAL ELECTRIC &amp; ENGINE CO. LTD AND NOT TO BE COPIED OR USED WITHOUT THEIR PRIOR PERMISSION.</small>			
SUPPLY LOI NO.			
ERECTION LOI NO.			
PROJECT			
SUBSTATION			
VENDORS NAME			
DRG. TITLE	GENERAL ARRANGEMENT DRG. FOR 132 kv 1200 A CT (120%)		
DRG. NO.	132-KV-CT-120-GA		
SCALE:	NTS	JOB NO:	SHEET