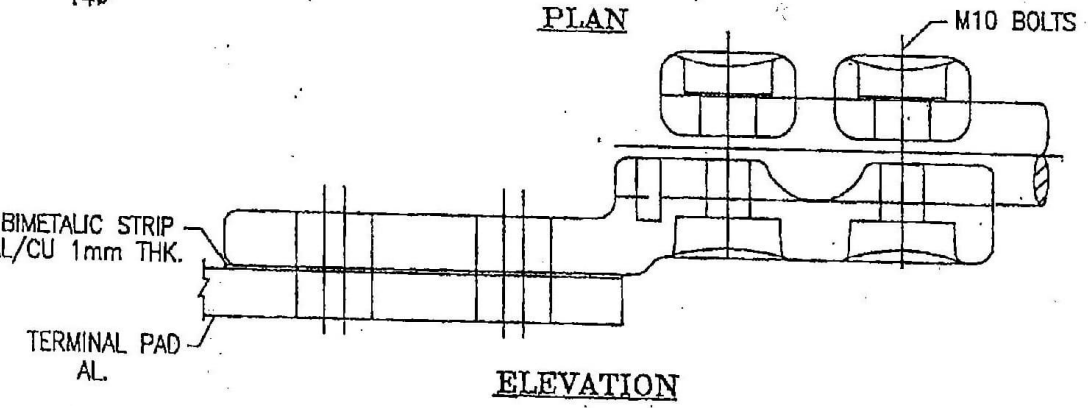


31	MOOSE	31.77
30	ELK	31.50
29	DEER	29.89
28	ZEBRA	28.62
27	DRAKE	28.14
26	SHEEP	27.93
25	KUNDHA	27.00
24	GOAT	25.97
23	BEAR	23.45
22	LION	22.28
21	PANTHER	21.00
20	LARK	20.44



Single ACSR ZEBRA

MECHANICAL SPECIFICATION

REF. STD.: ANSI/NEMA CC1-2009			
DESCRIPTION	DESIGN INPUT	ACCEPTANCE CRITERIA	
SHORT TIME CURRENT RATING (IN KA)	31.5 KA FOR 3Sec	NO. MECH. DAMAGE	
MATERIAL		BOLT TIGHTENING TORQUE	
CONNECTOR	: AL ALLOY GRADE- 4800 (M6) IS-517 TO IAF BS-1490	M10 : 30Nm M12 : 55Nm M16 : 75Nm	
FASSTENOR	: MS HOG. GRADE - 5.8		
B-METAL	: AL. CU.		
FLEXIBLE	: AAC / 25 ALLOY.		
RECOMMENDED TORQUE (Nm)	SIZE OF BOLT'S		
	M10	M12	M16
	30	55	75
ALL SHARP CORNERS ARE ROUNDED OFF TOLERANCE- AS PER OUR MANUFACTURING TOL.			
MIN. WALL THICKNESS OF ALL CURRENT CARRYING PART IS 10mm	SYSTEM VOLTAGE UP TO 132 KV..		
ALL DIMENSION ARE IN MM NOT TO SCALE			

Date	Customer: Bihar State Power Transmission Corporation Limited.	Descr: 145kV,40KA,3150A,SP6 CB	SAP No :	Qty :-25Nos	ALL DIMENSION ARE IN MM NOT TO SCALE
Prep	Project :	Type: 3AP1FG		Drq. No:- 145-KV-3150-CB-TC	
Ckd.	Original/Replacement for/Replaced by :-	Details: TERMINAL CONNECTOR			Sh. 3
Issue	Remarks	Date	Norm	Norm	3 St.