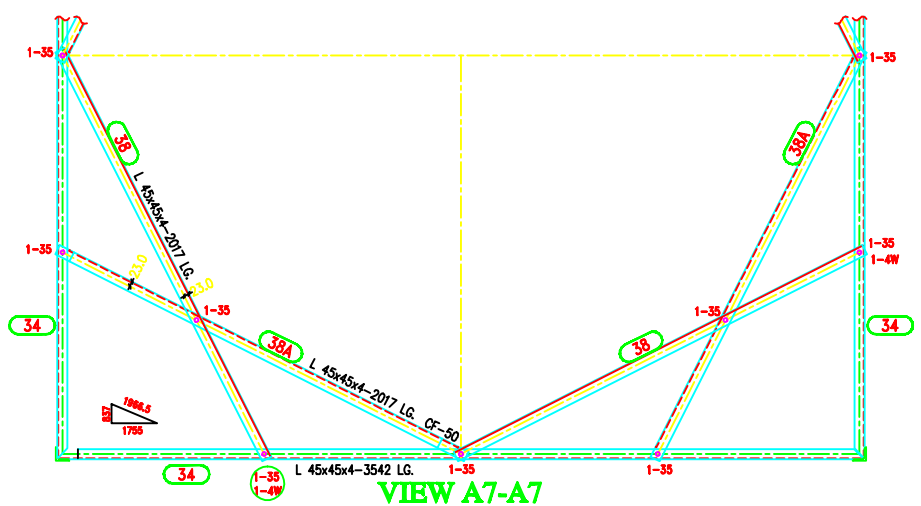


TOWER SLOPE
(FOR ±0M TOWER)

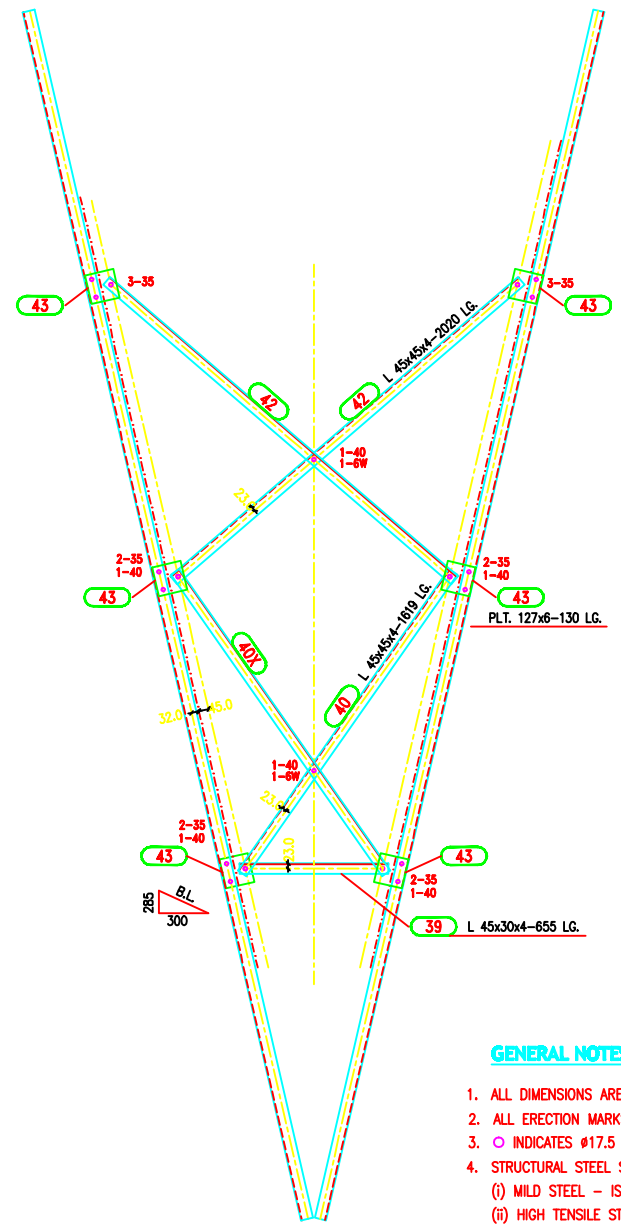
Tan B = 0.097605410
2 Tan B = 0.195210820
Face = 1.004793381
Dev = 1.009481860

In Face Slopes

Tan B = 0.097143771
Sec B = 1.003962122



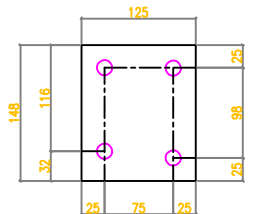
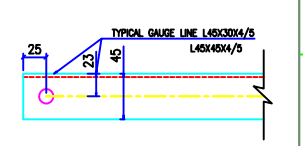
VIEW A7-A7



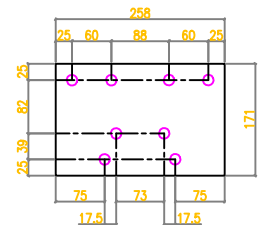
VIEW A9-A9

SUMMARY OF BOLTS FOR ±0M BODY EXTENSION

BOLT SIZE	QUANTITY	GRADE	REMARKS
16φ x 35 LG	180	5.6	-
16φ x 40 LG	56	5.6	-
16φ x 45 LG	60	5.6	-
16φ x 50 LG	-	5.6	-
16φ x 55 LG	-	5.6	-
16φ x 60 LG	-	5.6	-
16φ x 65 LG	-	5.6	-
16φ x 3.5 THK	296	-	SPRING WASHERS
16φx175 LG.	20	4.6	STEP BOLT
4THK. WASHER	8	-	PACK WASHERS
6THK. WASHER	20	-	PACK WASHERS
8THK. WASHER	-	-	PACK WASHERS
10THK. WASHER	-	-	PACK WASHERS



36 PLT. 125x6 - 148 LG.

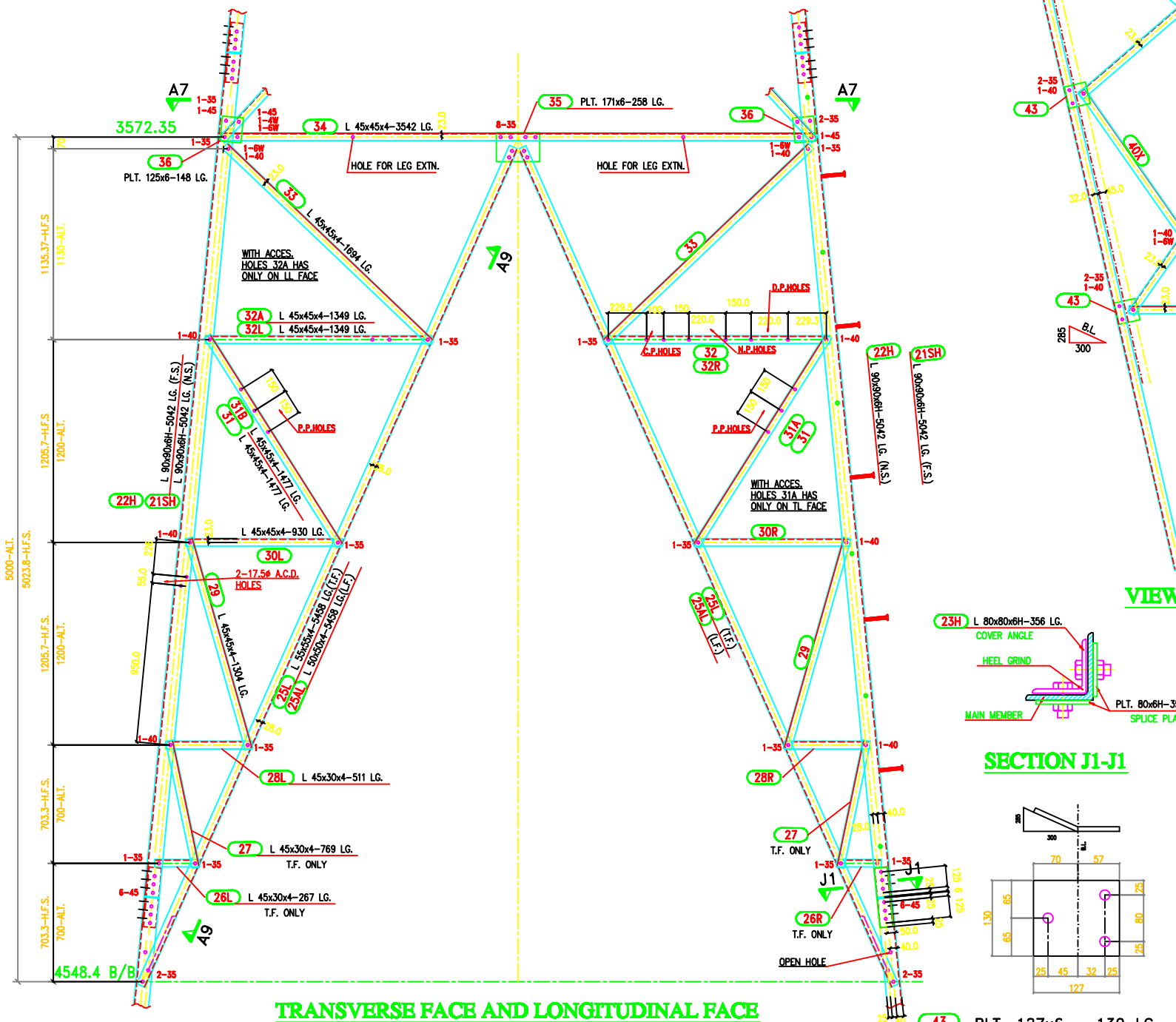


35 PLT. 171x6 - 258 LG.

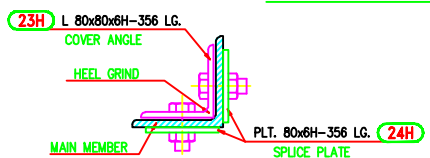
- GENERAL NOTES:**
- ALL DIMENSIONS ARE IN "mm" UNLESS OTHERWISE SPECIFIED.
 - ALL ERECTION MARKS ARE TO BE PREFIXED WITH - "1DA"
 - INDICATES Ø17.5 HOLE FOR M16 BOLT U.O.S.
 - STRUCTURAL STEEL SHALL BE AS FOLLOWS
 - (i) MILD STEEL - IS:2062 WITH YIELD STRESS F_y-2550 KG/SQ.CM.
 - (ii) HIGH TENSILE STEEL - IS:8500 GR490B
 - BOLTS AND NUTS AS PER IS:12427 - 1988. CONFORM TO GRADE-5.6
 - GALVANISING SHALL CONFORM TO IS:2629-1985 & IS:4759-1996.
 - SPRING WASHER SHALL BE CONFORM TO IS 3063-1994
 - STEP BOLTS SHALL BE DIAGONALLY OPPOSITE LEGS
 - STEP BOLTS SHALL BE IS:10238-1982
 - SUFFIX "H" INDICATES HIGH TENSILE STEEL

MARK Nos. 21 TO 43

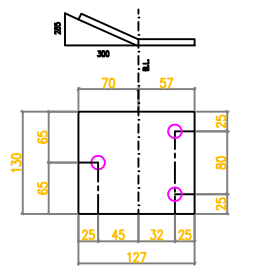
MARK Nos. 37 & 41 NOT USED



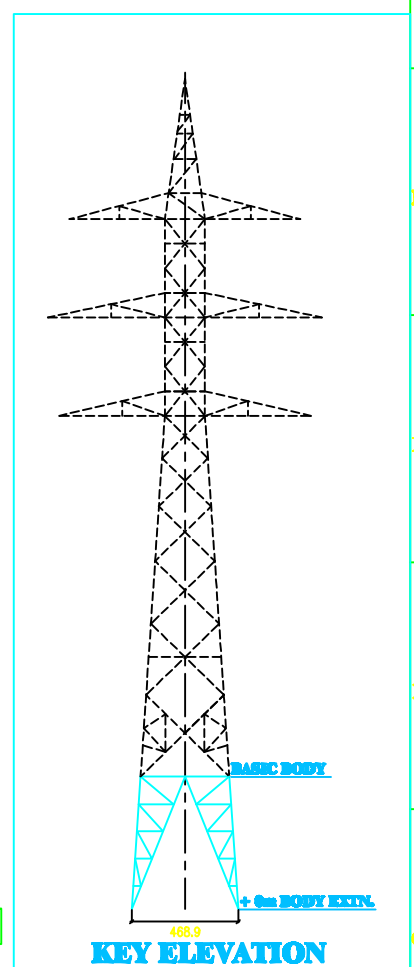
TRANSVERSE FACE AND LONGITUDINAL FACE



SECTION J1-J1



43 PLT. 127x6 - 130 LG.



KEY ELEVATION

BIHAR STATE POWER TRANSMISSION COMPANY LTD

DRAWN BY	DESCRIPTION	132KV D/C TOWER TYPE "DA"		SCALE
CHECKED BY	±0M BODY EXTENSION			-
APPROVED BY	DRG NO	132KV-D/C-Struct-±0-Body-Extn-12	SHEET NO 1-1	REV. 0