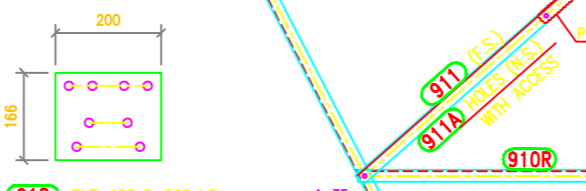
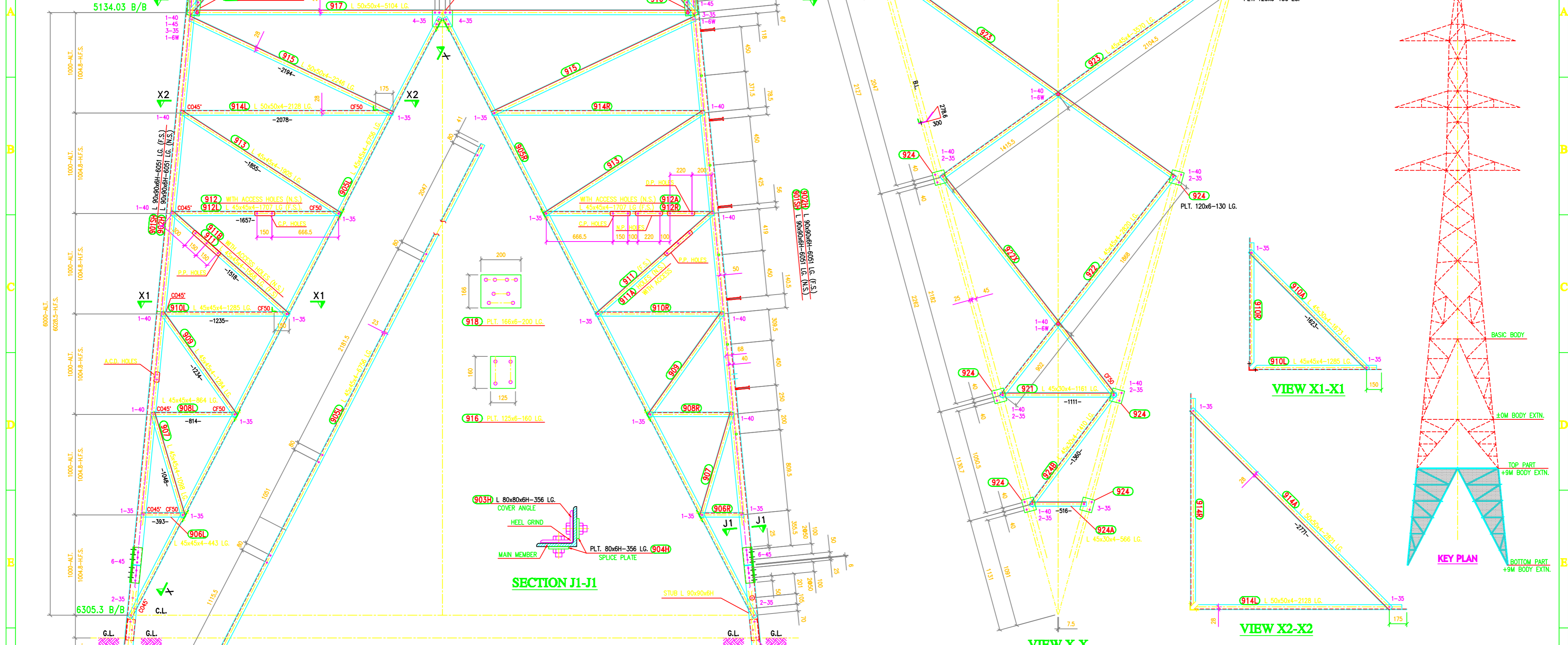
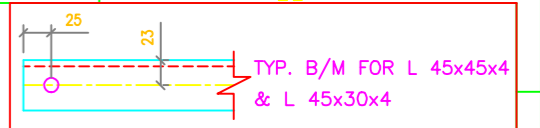


TOWER SLOPE
(FOR ±0M TOWER)

Tan B	0.09760541
2 Tan B	0.19521083
Face	1.00475212
Dev	1.00948186

In Face Slopes

Tan B	0.09714377
Sec B	1.00996212



SUMMARY OF BOLTS FOR +9M BODY EXTENSION (BOTTOM PART)

BOLT SIZE	QUANTITY	GRADE	REMARKS
16φ x 35 LG	232	5.6	-
16φ x 40 LG	60	5.6	-
16φ x 45 LG	56	5.6	-
16φ x 50 LG	-	5.6	-
16φ x 55 LG	-	5.6	-
16φ x 60 LG	-	5.6	-
16φ x 65 LG	-	5.6	-
16φ x 3.5 THK	348	-	SPRING WASHERS
4THK. WASHER	4	-	PACK WASHERS
6THK. WASHER	16	-	PACK WASHERS
16φx175 LG.	22	5.6	STEP BOLT WITH 2 NUTS & 1 SPRING WASHER

MARK Nos. 901 TO 924 MARK Nos. 919 NOT USED

- GENERAL NOTES :**
- ALL DIMENSIONS ARE IN "mm" UNLESS OTHERWISE SPECIFIED.
 - INDICATES Ø17.5 HOLE FOR M16 BOLT U.O.S.
 - ALL ERECTION MARKS ARE TO BE PREFIXED WITH - "1DA"
 - STRUCTURAL STEEL SHALL BE AS FOLLOWS
 - (i) MILD STEEL - IS:2062 WITH YIELD STRESS F_y-2550 KG/SQ.CM.
 - (ii) HIGH TENSILE STEEL - IS:8500 GR4908
 - BOLTS AND NUTS AS PER IS:12427 - 1988, CONFIRMING TO GRADE-5.6
 - GALVANISING SHALL CONFORM TO IS:2629-1985 & IS:4759-1996.
 - SPRING WASHER SHALL BE CONFIRM TO IS 3063-1994
 - STEP BOLTS SHALL BE DIAGONALLY OPPOSITE LEGS
 - STEP BOLTS SHALL BE IS:10238-1982
 - SUFFIX "H" INDICATES HIGH TENSILE STEEL
 - INDICATES MEMBERS USED AS STEP-BOLTS

BIHAR STATE POWER TRANSMISSION COMPANY LTD

DRAWN BY	DESCRIPTION	132KV D/C TOWER TYPE "DA"		SCALE
CHECKED BY	+9M BODY EXTENSION-BOTTOM PART			-
APPROVED BY	DRG NO	132KV-DC-Struct-+9M-Extn-Bottom-19	SHEET NO 1-1	REV. 0